

RETAIL SPACE

INMAN PLAZA

Join Dollar General & Kiddie Academy

300 WEST INMAN AVE AT ROOSEVELT AVE & EAST WALNUT ST

COLONIA | NEW JERSEY

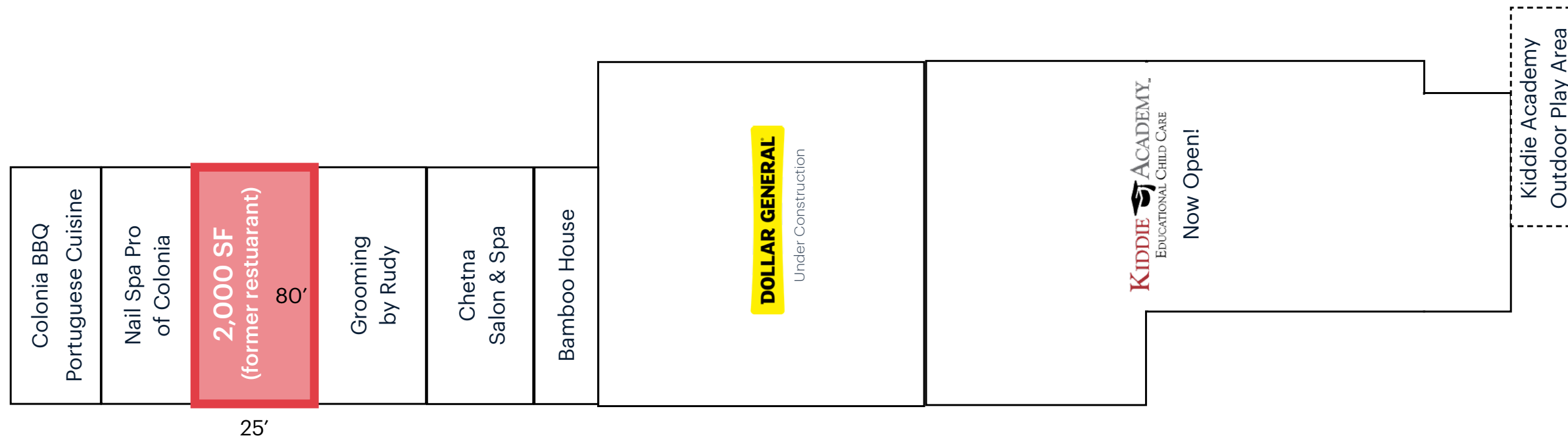
2,000 SF
Restaurant Space
Available



2,000 SF
Restaurant Space Available

RIPCO
REAL ESTATE

SITE PLAN



SPACE AVAILABILITY

Space A 2,000 SF (former restaurant)

GLA

31,699 SF

ASKING RENT

Available upon request

NNN

\$9.38 psf (est.)

PARKING

100+ spaces

NEIGHBORS

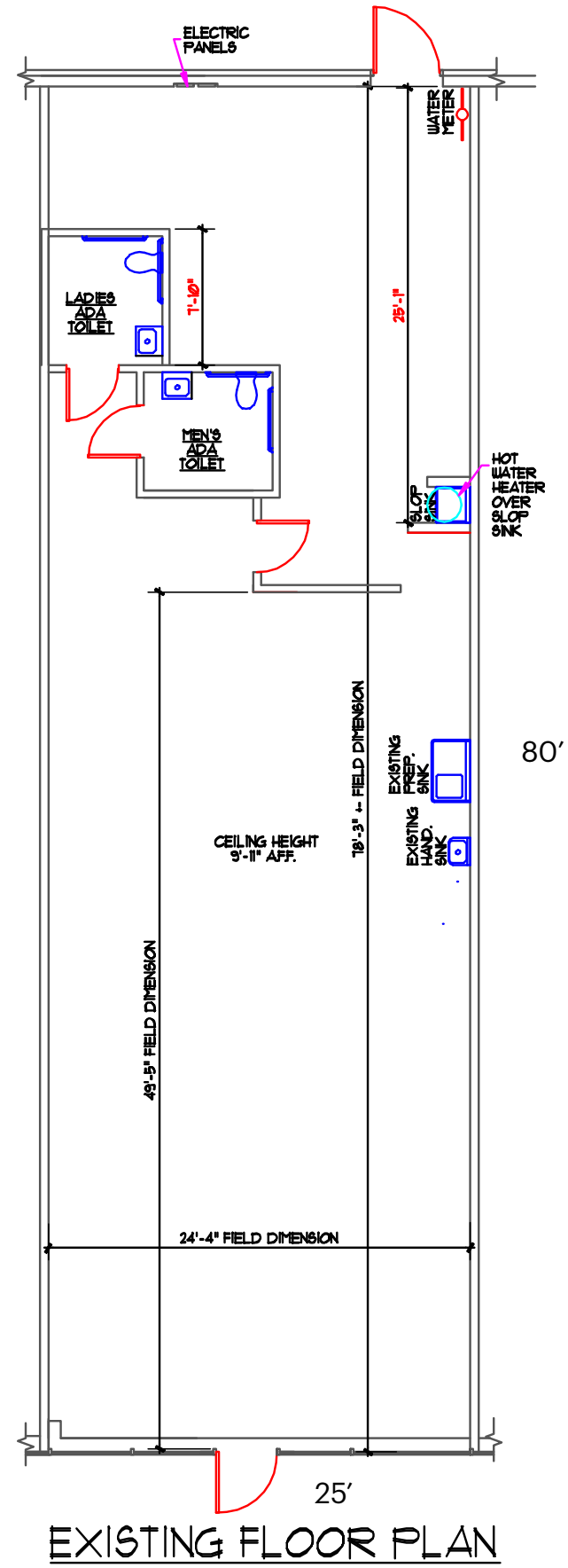
Dunkin', The Fresh Grocer, Walgreens, Anytime Fitness, Supercuts, Bank of America, Wells Fargo

ATTRIBUTES

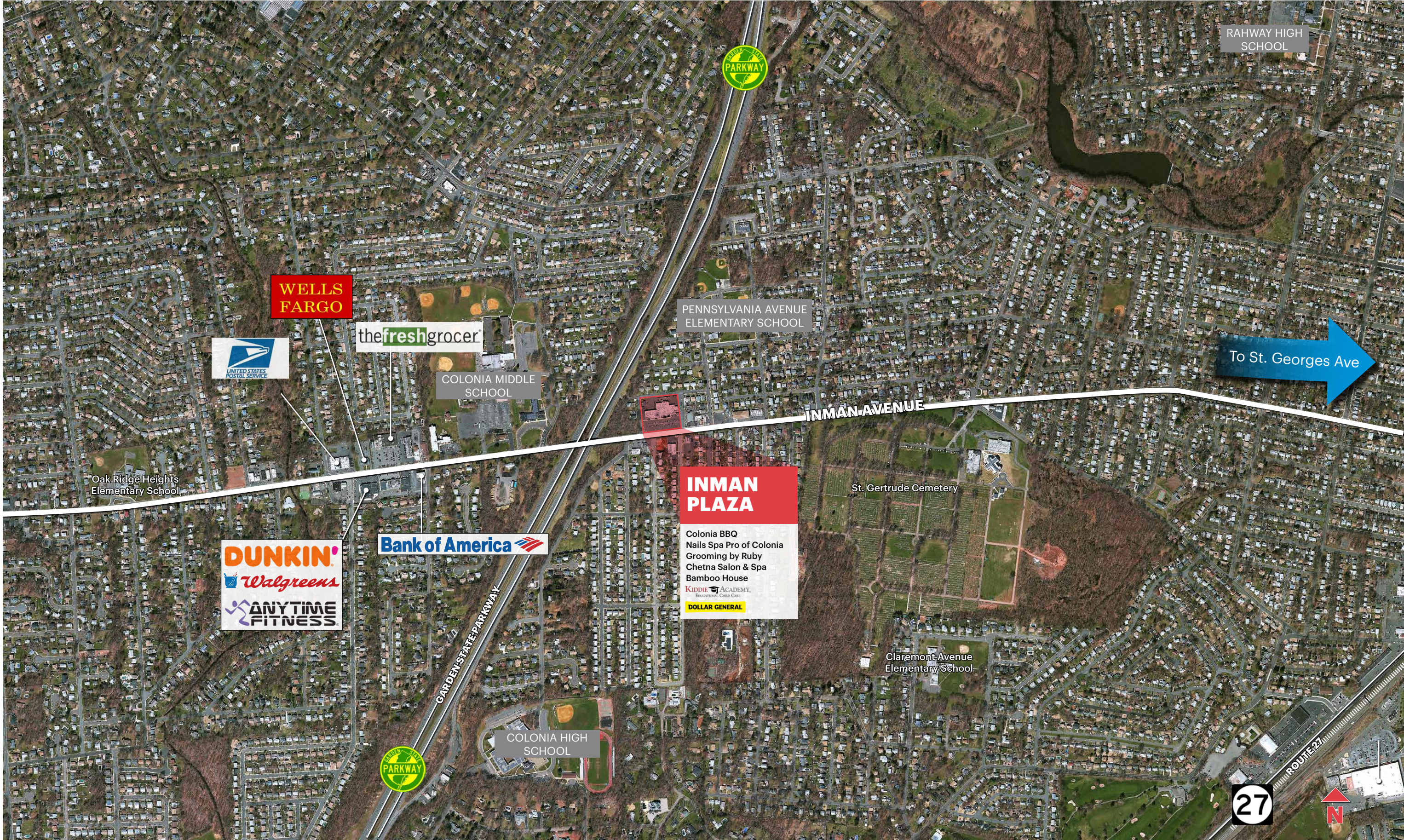
- Densely Populated - 139,000 people living & 71,000 people working w/in 3 miles
- Frontage - 360 linear feet
- Access - 4 Curb Cuts
- Access via - Inman Ave & E Walnut Street



FLOOR PLAN



MARKET AERIAL



WELLS FARGO



the fresh grocer

COLONIA MIDDLE SCHOOL

PENNSYLVANIA AVENUE ELEMENTARY SCHOOL

To St. Georges Ave

INMAN AVENUE

Oak Ridge Heights Elementary School

INMAN PLAZA

St. Gertrude Cemetery

DUNKIN'
Walgreens
ANYTIME FITNESS

Bank of America

Colonia BBQ
Nails Spa Pro of Colonia
Grooming by Ruby
Chetna Salon & Spa
Bamboo House
KIDDIE ACADEMY,
EDUCATIONAL CHILD CARE
DOLLAR GENERAL

GARDEN STATE PARKWAY

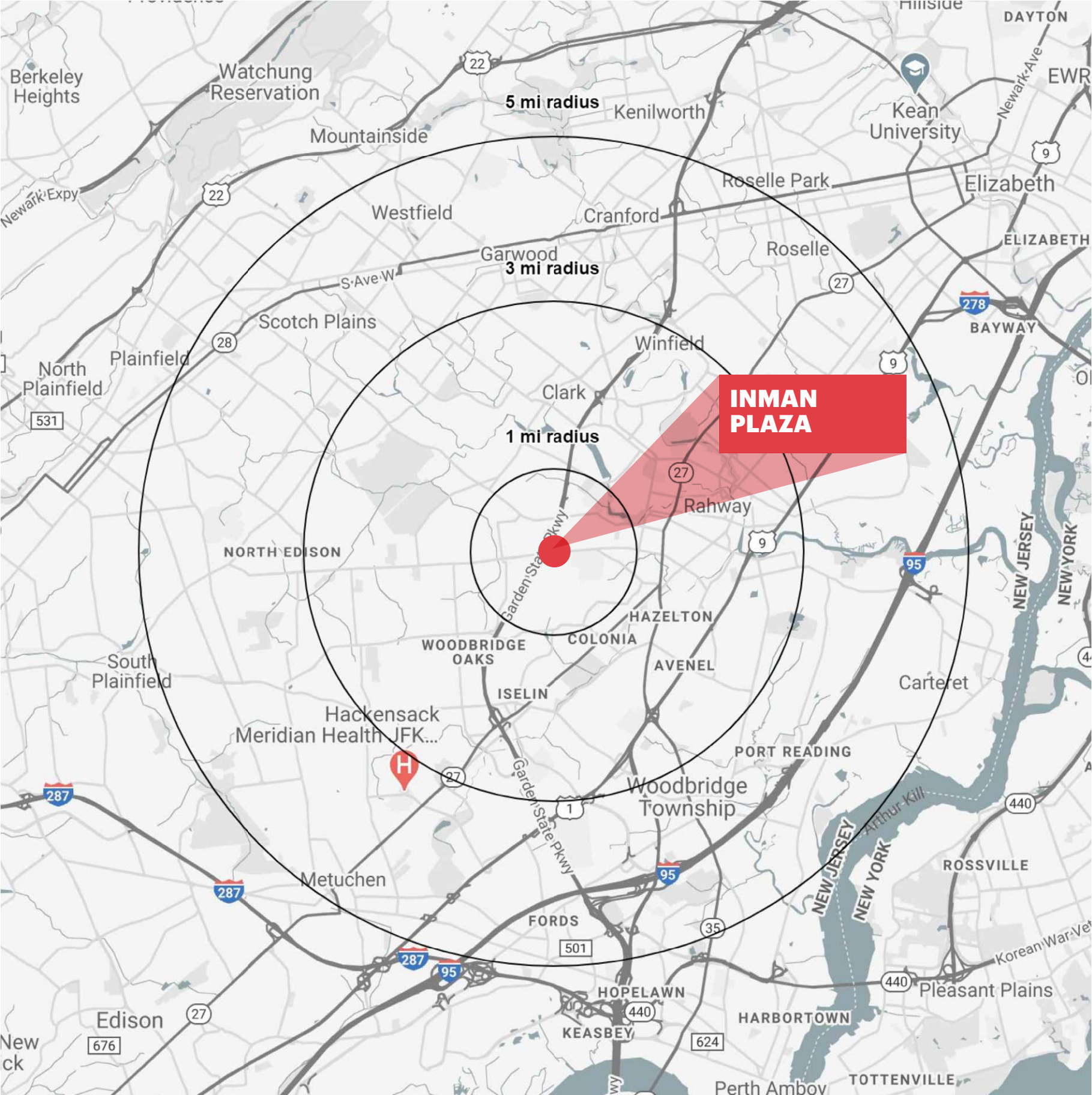
COLONIA HIGH SCHOOL

Claremont Avenue Elementary School

27



DEMOGRAPHICS



1 MILE RADIUS

POPULATION	14,391	TOTAL BUSINESSES	207
HOUSEHOLDS	4,902	TOTAL EMPLOYEES	2,189
MEDIAN AGE	45.0	TOTAL DAYTIME POPULATION	8,892
COLLEGE GRADUATES (Bachelor's +)	5,051 - 48%	AVERAGE HOUSEHOLD INCOME	\$153,642

3 MILE RADIUS

POPULATION	142,715	TOTAL BUSINESSES	4,505
HOUSEHOLDS	51,390	TOTAL EMPLOYEES	59,278
MEDIAN AGE	42.1	TOTAL DAYTIME POPULATION	127,932
COLLEGE GRADUATES (Bachelor's +)	52,020 - 50%	AVERAGE HOUSEHOLD INCOME	\$147,548

5 MILE RADIUS

POPULATION	381,969	TOTAL BUSINESSES	12,950
HOUSEHOLDS	137,730	TOTAL EMPLOYEES	181,498
MEDIAN AGE	41.9	TOTAL DAYTIME POPULATION	364,516
COLLEGE GRADUATES (Bachelor's +)	133,892 - 49%	AVERAGE HOUSEHOLD INCOME	\$151,416

*2023 estimates



**CONTACT
EXCLUSIVE
AGENTS**

CORRIANNE STEIN
cstein@ripconj.com
240.205.4670

CURTIS NASSAU
cnassau@ripconj.com
201.777.2302