

1729 15th Street

Boulder, Colorado 80302

For Lease | Prime Retail | Office Space

Approx. 8,309 sq/ft

\$12.00/sq/ft (First Year Rate)

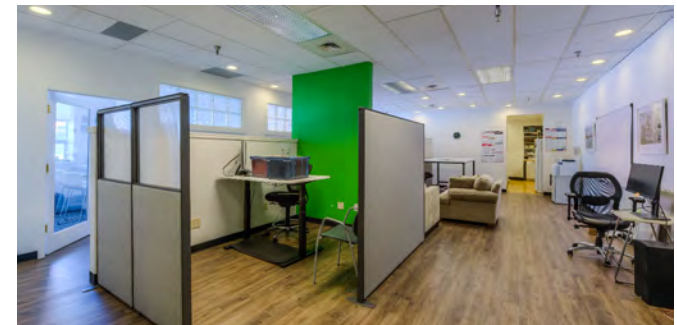
Details

Approximately 8,309 sq/ft - \$12.00 sq/ft + NNN \$19.54

- Suite 101 - 1,979 sq/ft - Leased thru 12.31.23
- Suite 103 - 2,498 sq/ft
- Suite 200 - 1,196 sq/ft
- Suite 220 - 1,576 sq/ft
- Suite 250 - 1,060 sq/ft
- Suite 101 has two man door entrances on 15th Street, perfect for retail/coffee shop/studio. Excellent visibility with high foot traffic. High ceilings and tons of natural light.
- Easily divisible spaces.
- Downtown Boulder, walk to Pearl Street, farmer's market, on the Boulder Creek bike bath.
- Two story modern office building, includes private closed door offices, open bullpen, conference rooms, and kitchen.
- 3 on site parking spaces plus 30 parking passes in the City lots.
- NNN includes CAM, taxes and insurance.
- All utilities included: gas, electric, and water.



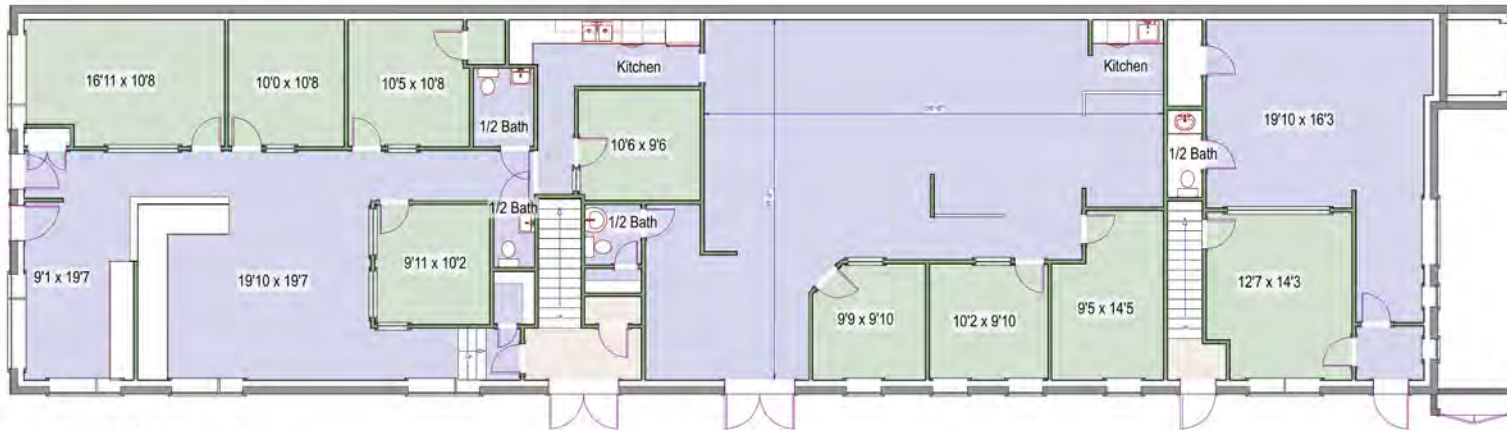
Property Gallery



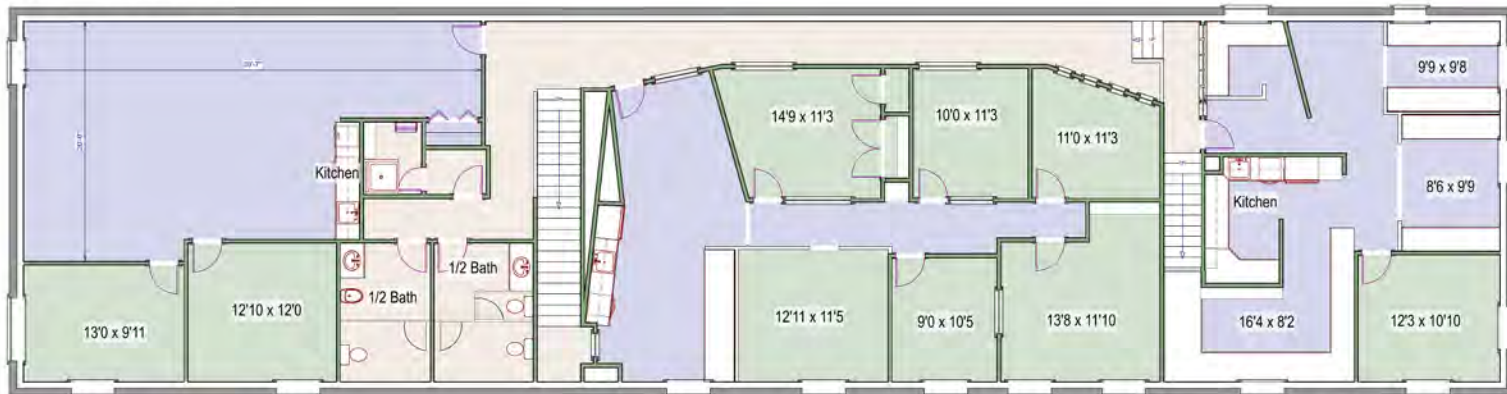
Floor Plan

1729 15th Street
Boulder, Colorado

Main Level - 4168 square feet +/- (Suite #101 - 1894 sf / Suite #103 - 2274 sf) +/-



Upper Level - 4380 square feet +/-



Eric Rutherford/Tom Hill/Dan Tremblay

erutherford@wkre.com

Tel: (303) 541-1908

Thill@wkre.com

Tel: (720) 564-6011

dtremblay@wkre.com

Tel: (720) 564-6067

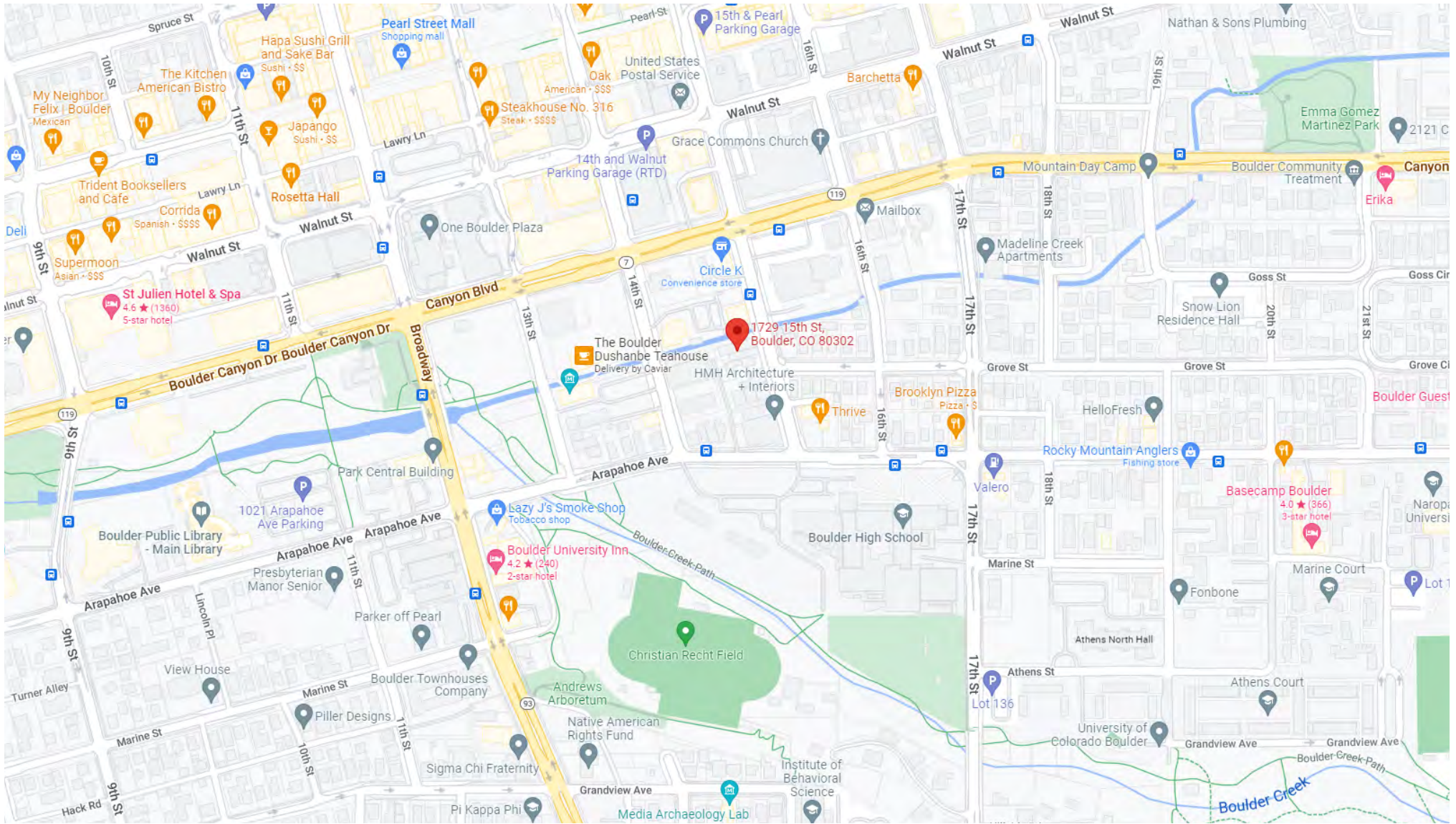


Measurements are approximate and no responsibility is taken for any omission or misstatement. These plans are for visual representation purposes only. Floor plan is not an architectural drawing. Square footage is determined to be based on a floor square footage and is not guaranteed.

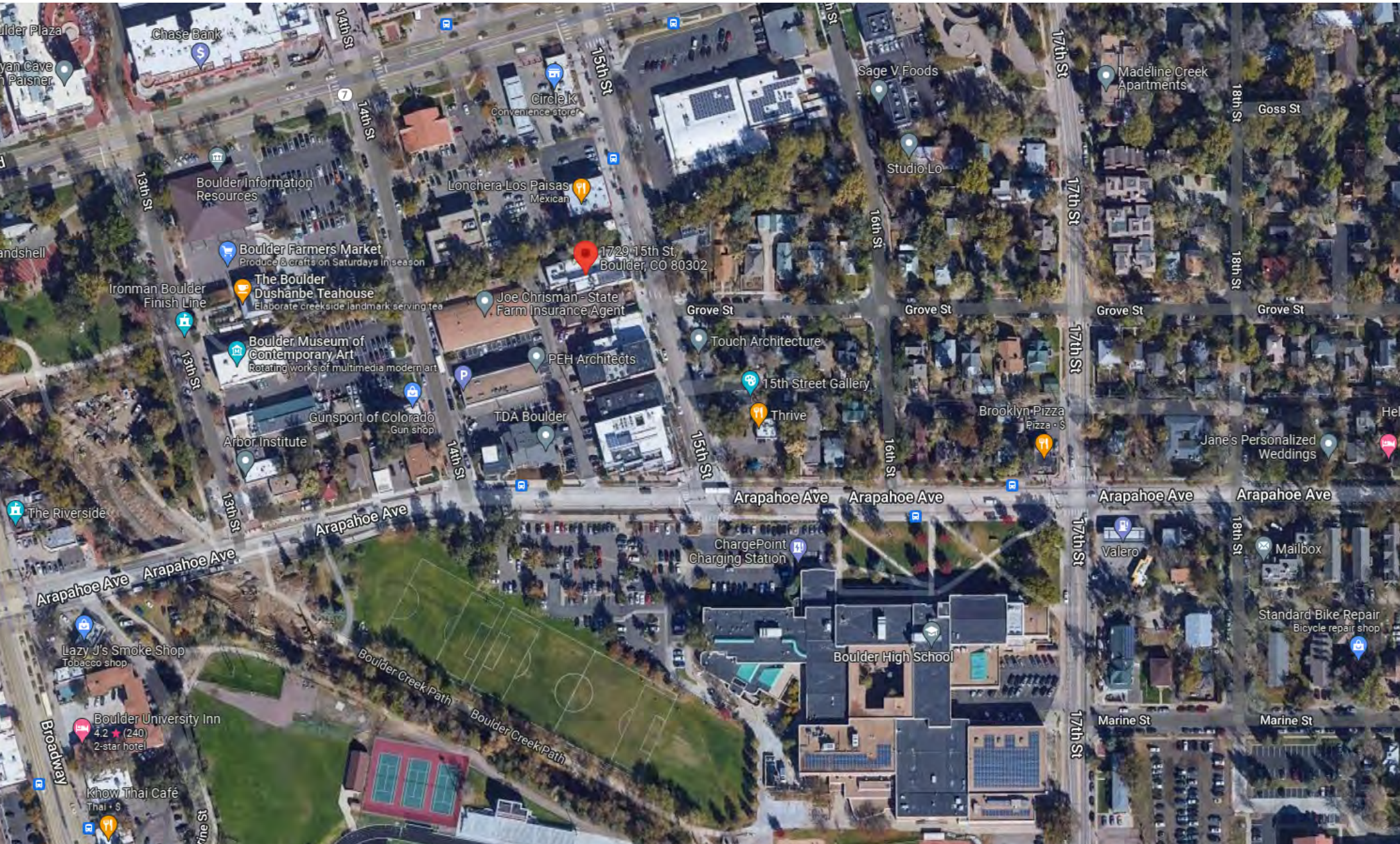
Floor Plans prepared by Overland Views, (303) 444-1578, esa@overlandviews.com



Map



Aerial View



1729 15th Street
Boulder, Colorado 80302



Eric Rutherford MBA, CCIM, GREEN
303.541.1908

erutherford@wkre.com
www.ericrutherford.com

United States Naval Academy Graduate
Served as an Officer in the United States Marine Corps

Dan Tremblay
720.564.6067

dtremblay@wkre.com
www.dantremblay.wkre.com





WK
REAL ESTATE

COMMERCIAL DIVISION

4875 Pearl East Circle | Boulder, CO 80301

TM