



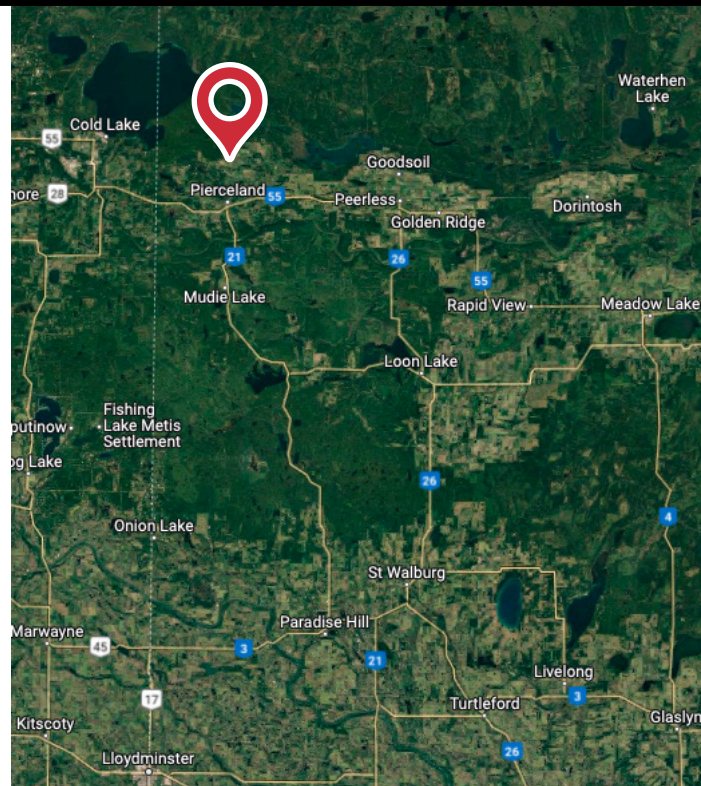
154.14 ACRES

RM BEAVER RIVER, NO 622, PIERCELAND, SK

PROPERTY HIGHLIGHTS

- Located just 7 km north of Pierceland, this operational pit is surrounded by multiple communities and only 45 km from Cold Lake AB
- Gravel pit investigation completed in February 2022 indicating over 474,000m³ of recoverable resources

Michael Parsons
780 435 5507
mparsons@naiedmonton.com



THE INFORMATION CONTAINED HEREIN IS BELIEVED TO BE CORRECT, BUT IS NOT WARRANTED TO BE SO AND DOES NOT FORM A PART OF ANY FUTURE CONTRACT. THIS OFFERING IS SUBJECT TO CHANGE OR WITHDRAWAL WITHOUT NOTICE.

4601 99 Street NW
Edmonton, AB T6E 4Y1
780 436 7410
naiedmonton.com



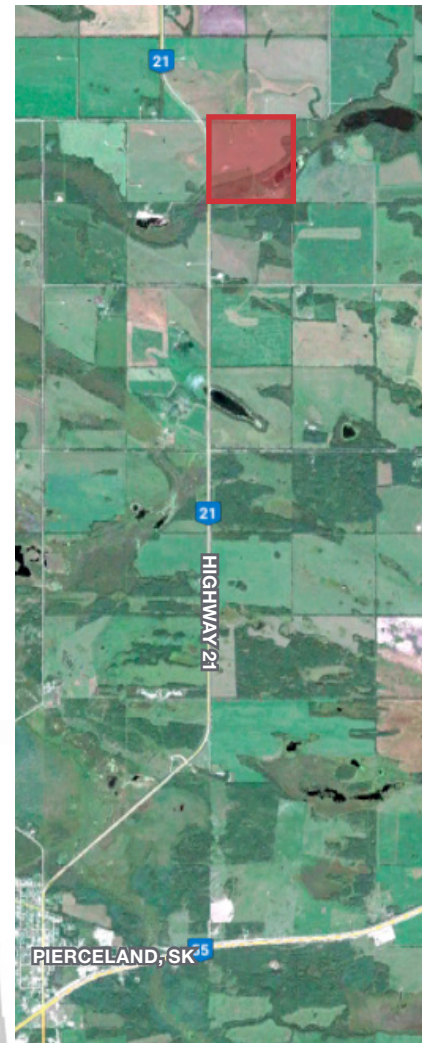
RM BEAVER RIVER NO 622 PIERCELAND, SK

FOR SALE
154.14 Acres Gravel Pit



ADDITIONAL INFORMATION

AVAILABLE AREA	154.14 acres
SALE PRICE	\$2,200,000
TAXES	\$1,368.00 (2022)
ZONING	AG
LEGAL DESCRIPTION	Surface Parcel 147140423 Mineral Parcel 147140434
POSSESSION	Negotiable



CO-MARKETED BY NAI COMMERCIAL REAL ESTATE INC. & ICR COMMERCIAL REAL ESTATE (LISTING BROKERAGE)

Michael Parsons
780 435 5507
mparsons@naiedmonton.com



Graham Robertson
306.381.7160
graham.robertson@icrcommercial.com

