

High-end Office Space for Lease



# La Arcata Office Building

18615 Tuscany Stone, San Antonio, TX 78258

Offered by:  
Kimberly S. Gatley  
Todd A. Gold, CCIM





# Table of Contents

Market Summary..... 5

Property Summary..... 7

Location Map/Aerial..... 8

Ingress/Egress..... 10

Area Hotels, Event Centers & Hospitals..... 12

Restaurants..... 14

Quote Sheet..... 17

Plans..... 18

Demographics..... 27

Market Overviews..... 30

TREC Agency Disclosure..... 32

© December 2025 REOC San Antonio. REOC San Antonio is a licensed Real Estate broker in the State of Texas operating under REOC General Partner, LLC. The information contained herein is deemed accurate as it has been reported to us by sources which we understand, upon no investigation, to be reliable. As such, we can make no warranty, guarantee or representation as to the accuracy or completeness thereof nor can we accept any liability or responsibility for the accuracy or completeness of the information contained herein. Any reliance on this information is solely at the readers own risk. Photos herein are the property of their respective owners. Use of these images without the express written consent of the owner is prohibited. Further, the property is submitted subject to the possibility of errors, omissions, change of price, rental or other conditions, prior sale, lease or financing, or withdrawal without notice.





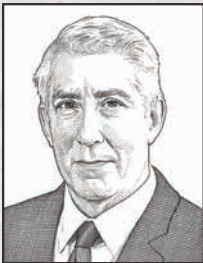
# Market Summary

- Located at the epicenter of San Antonio’s major growth
- Great location fronting Loop 1604
- Situated on the dynamic intersection of Tuscany Stone and North Loop 1604 West
- Accessible to the South Texas & Stone Oak Medical Center areas
- Unique location draws from Boerne, South Texas Medical Center and Stone Oak
- Prestigious client base & unique tenant mix
- Near numerous gated executive residential communities
- Highest residential demand area in San Antonio with over 72 established subdivisions
- Residential community prices range from \$500,000 to several million dollars
- Exceptional demographic profile
- Population has more than doubled within a 1, 3, and 5-mile radius since 1990
- Near two of San Antonio’s largest and strongest Texas Education Agency recognized school districts, with 17 elementary schools, 4 middle schools and 4 high schools
- Over 15 “mega” churches in the surrounding community
- Great shopping with all major retailers, recreation and fitness centers located in close proximity to the site
- Large selection of fine dining options as well as casual and fast food choices nearby
- San Antonio hospitality industry is supported by 40,000 hotel rooms
- There are 29,852 employers with over 360,700 employees within a ten mile radius
- Six major hospitals located within five miles; complimented by 20 medical office buildings
- Area golf courses include 8 existing facilities and the new PGA resort

# Contacts



**Kimberly S. Gatley**  
Senior Vice President  
210 524 1320  
  
[kgatley@reocsanantonio.com](mailto:kgatley@reocsanantonio.com)  
[reocsanantonio.com/kimberly-gatley](https://reocsanantonio.com/kimberly-gatley)



**Todd A. Gold, CCIM**  
CEO, Principal  
210 524 1309  
  
[tgold@reocsanantonio.com](mailto:tgold@reocsanantonio.com)  
[reocsanantonio.com/todd-gold](https://reocsanantonio.com/todd-gold)





# Property Summary

## Description

With style and architecture reminiscent of a Tuscan village, La Arcata combines an old world charm with state of the art construction and amenities. This mixed-use development offers a variety of retail shops, storefront offices and restaurants. Located at the entrance of Stone Oak, La Arcata offers great exposure to one of the most affluent areas in San Antonio.

## Location

NE corner of Loop 1604 and Tuscany Stone

## Facility

- Attractive exterior and interior design
- Distinctive landmark architecture
- Parking ratio 1:250

## Size

- 3-story office building
- 97,718 Total Square Feet
- Part of La Arcata Office & Retail development containing nearly 190,000 square feet of retail, office and fine dining

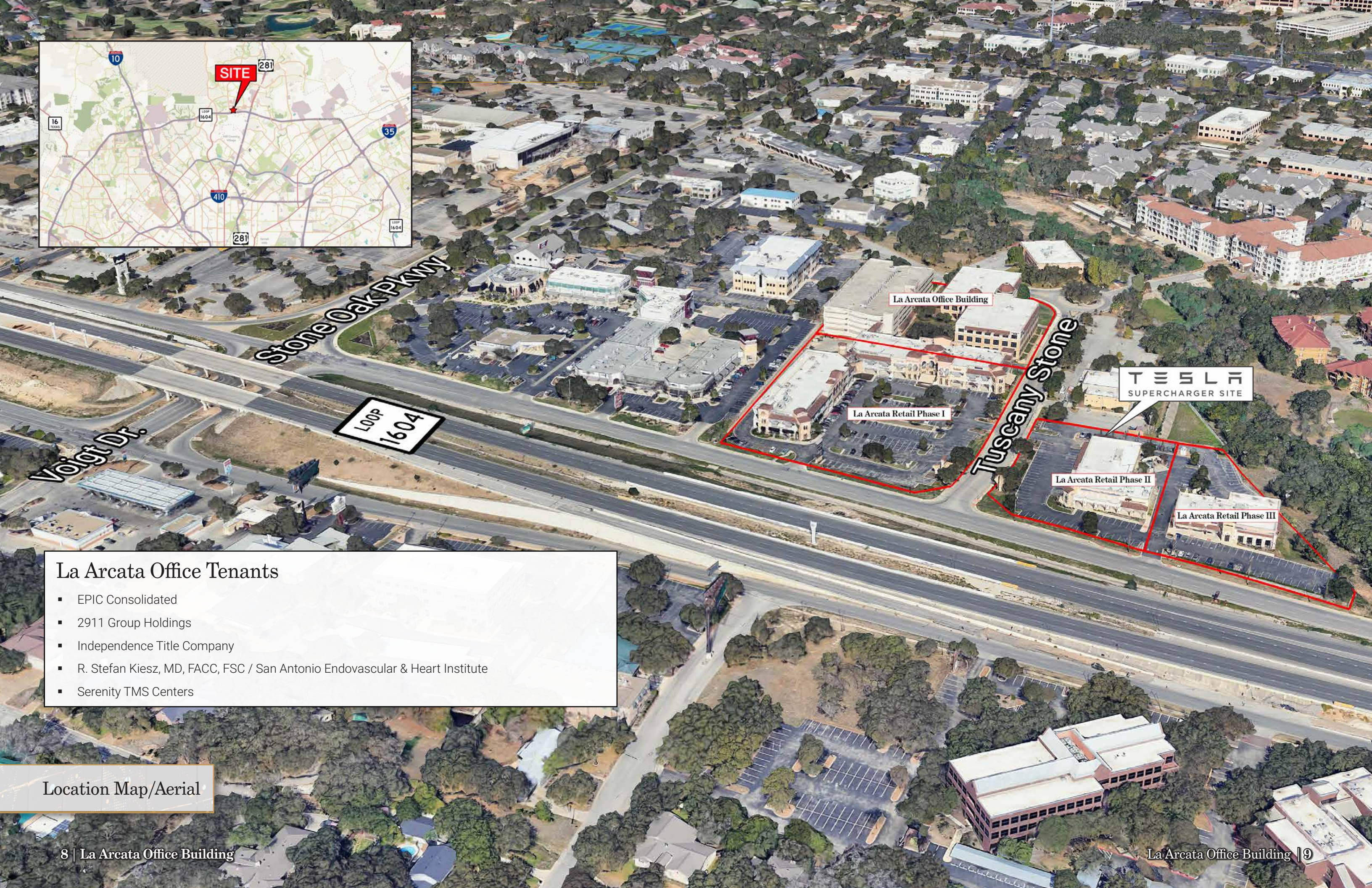
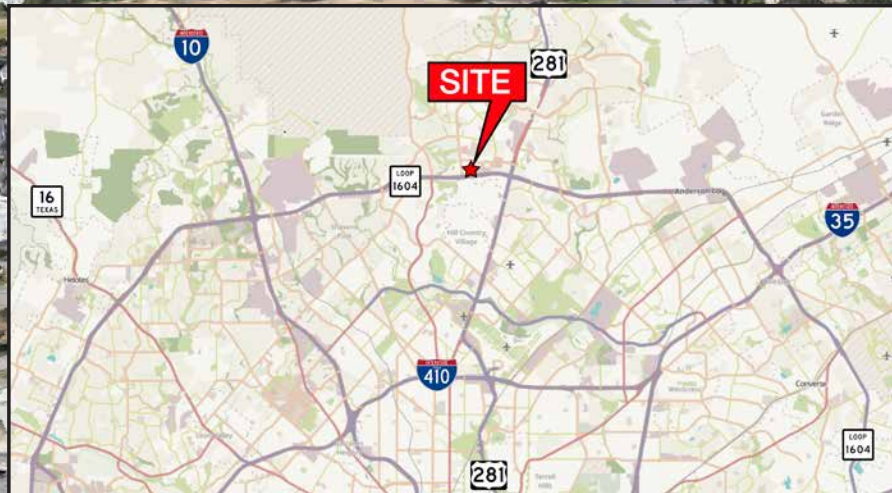
## Zoning

- The site is currently zoned Commercial (C-3) with the following overlays: Loop 1604 Corridor & MLOD – Camp Bullis

## La Arcata Office Building Tenants

- EPIC Consolidated
- 2911 Group Holdings
- Independence Title Company
- R. Stefan Kiesz, MD, FACC, FSC / San Antonio Endovascular & Heart Institute
- Serenity TMS Centers



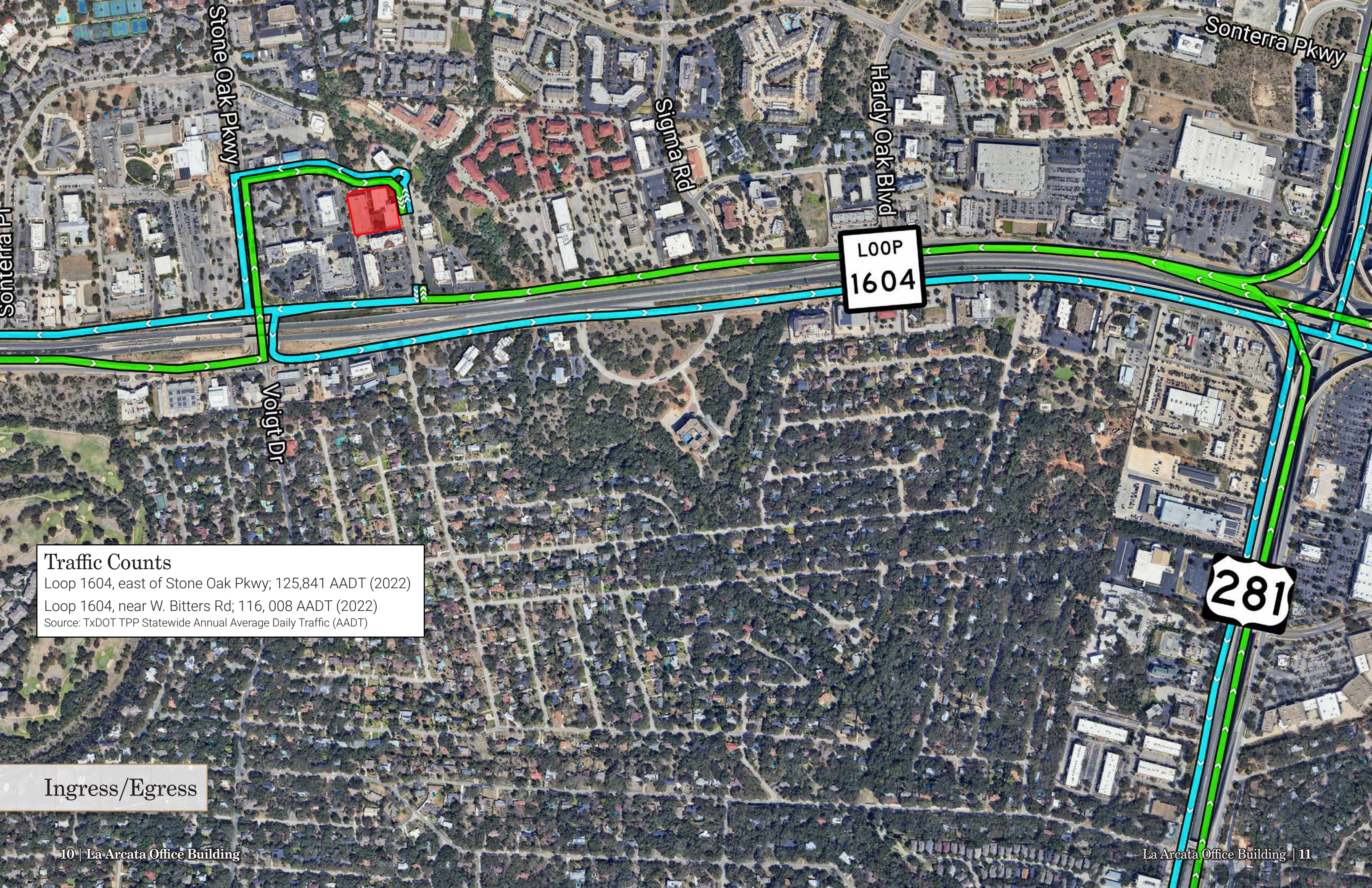


## La Arcata Office Tenants

- EPIC Consolidated
- 2911 Group Holdings
- Independence Title Company
- R. Stefan Kiesz, MD, FACC, FSC / San Antonio Endovascular & Heart Institute
- Serenity TMS Centers

Location Map/Aerial





Stone Oak Pkwy

Sonterra Pkwy

Sigma Rd

Hardy Oak Blvd

Voigt Dr

LOOP  
1604

281

**Traffic Counts**  
Loop 1604, east of Stone Oak Pkwy; 125,841 AADT (2022)  
Loop 1604, near W. Bitters Rd; 116, 008 AADT (2022)  
Source: TxDOT TPP Statewide Annual Average Daily Traffic (AADT)

Ingress/Egress

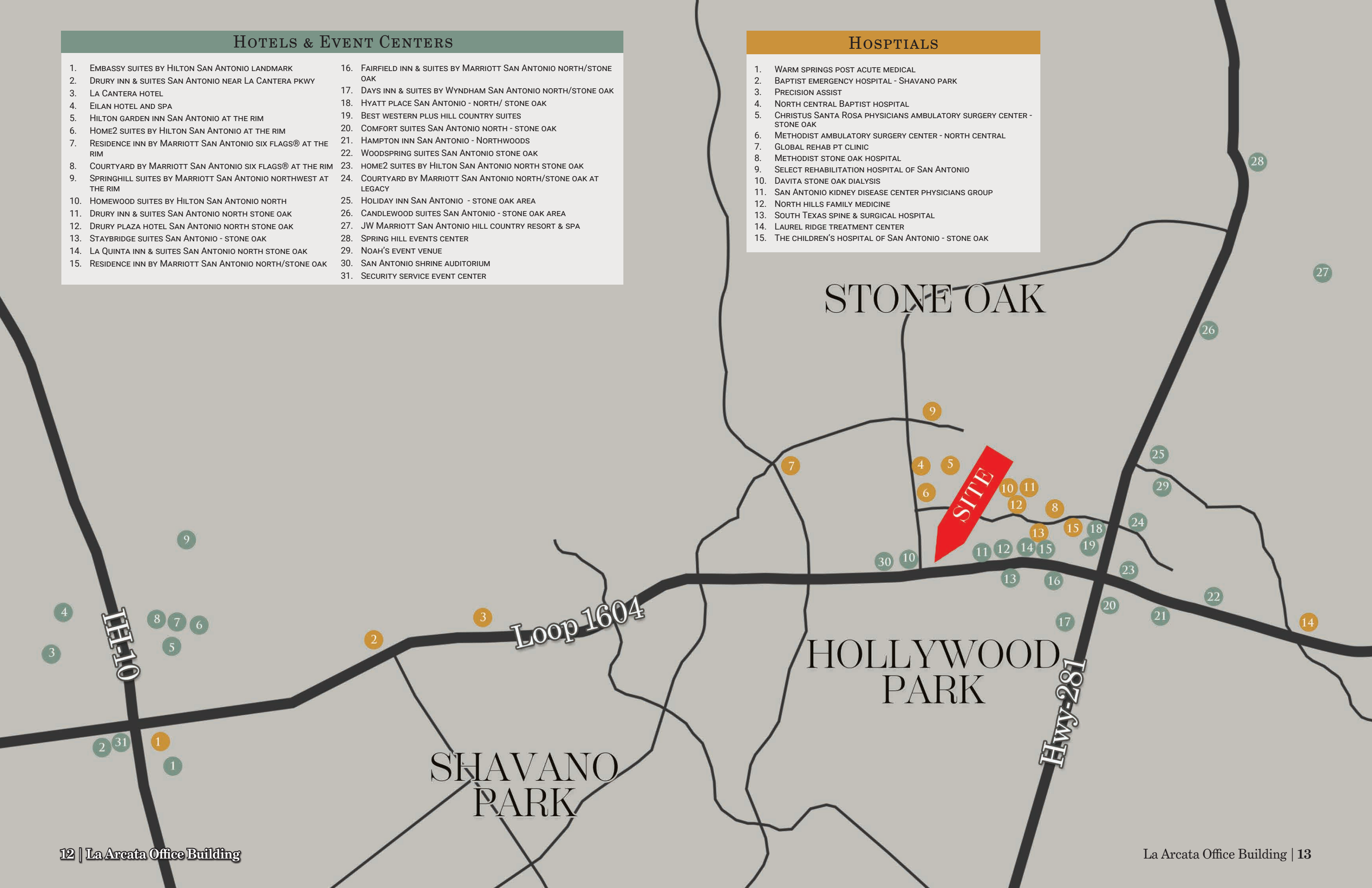


Hotels & Event Centers

- |   |  |
|---|--|
| 1. EMBASSY SUITES BY HILTON SAN ANTONIO LANDMARK                  | 16. FAIRFIELD INN & SUITES BY MARRIOTT SAN ANTONIO NORTH/STONE OAK |
| 2. DRURY INN & SUITES SAN ANTONIO NEAR LA CANTERA PKWY            | 17. DAYS INN & SUITES BY WYNDHAM SAN ANTONIO NORTH/STONE OAK       |
| 3. LA CANTERA HOTEL   | 18. HYATT PLACE SAN ANTONIO - NORTH/ STONE OAK                     |
| 4. EILAN HOTEL AND SPA  | 19. BEST WESTERN PLUS HILL COUNTRY SUITES                          |
| 5. HILTON GARDEN INN SAN ANTONIO AT THE RIM                       | 20. COMFORT SUITES SAN ANTONIO NORTH - STONE OAK                   |
| 6. HOME2 SUITES BY HILTON SAN ANTONIO AT THE RIM                  | 21. HAMPTON INN SAN ANTONIO - NORTHWOODS                           |
| 7. RESIDENCE INN BY MARRIOTT SAN ANTONIO SIX FLAGS® AT THE RIM    | 22. WOODSPRING SUITES SAN ANTONIO STONE OAK                        |
| 8. COURTYARD BY MARRIOTT SAN ANTONIO SIX FLAGS® AT THE RIM        | 23. HOME2 SUITES BY HILTON SAN ANTONIO NORTH STONE OAK             |
| 9. SPRINGHILL SUITES BY MARRIOTT SAN ANTONIO NORTHWEST AT THE RIM | 24. COURTYARD BY MARRIOTT SAN ANTONIO NORTH/STONE OAK AT LEGACY    |
| 10. HOMEWOOD SUITES BY HILTON SAN ANTONIO NORTH                   | 25. HOLIDAY INN SAN ANTONIO - STONE OAK AREA                       |
| 11. DRURY INN & SUITES SAN ANTONIO NORTH STONE OAK                | 26. CANDLEWOOD SUITES SAN ANTONIO - STONE OAK AREA                 |
| 12. DRURY PLAZA HOTEL SAN ANTONIO NORTH STONE OAK                 | 27. JW MARRIOTT SAN ANTONIO HILL COUNTRY RESORT & SPA              |
| 13. STAYBRIDGE SUITES SAN ANTONIO - STONE OAK                     | 28. SPRING HILL EVENTS CENTER                                      |
| 14. LA QUINTA INN & SUITES SAN ANTONIO NORTH STONE OAK            | 29. NOAH’S EVENT VENUE   |
| 15. RESIDENCE INN BY MARRIOTT SAN ANTONIO NORTH/STONE OAK         | 30. SAN ANTONIO SHRINE AUDITORIUM                                  |
|   | 31. SECURITY SERVICE EVENT CENTER                                  |

HOSPITALS

- |   |
|---|
| 1. WARM SPRINGS POST ACUTE MEDICAL                                      |
| 2. BAPTIST EMERGENCY HOSPITAL - SHAVANO PARK                            |
| 3. PRECISION ASSIST   |
| 4. NORTH CENTRAL BAPTIST HOSPITAL                                       |
| 5. CHRISTUS SANTA ROSA PHYSICIANS AMBULATORY SURGERY CENTER - STONE OAK |
| 6. METHODIST AMBULATORY SURGERY CENTER - NORTH CENTRAL                  |
| 7. GLOBAL REHAB PT CLINIC   |
| 8. METHODIST STONE OAK HOSPITAL   |
| 9. SELECT REHABILITATION HOSPITAL OF SAN ANTONIO                        |
| 10. DAVITA STONE OAK DIALYSIS   |
| 11. SAN ANTONIO KIDNEY DISEASE CENTER PHYSICIANS GROUP                  |
| 12. NORTH HILLS FAMILY MEDICINE   |
| 13. SOUTH TEXAS SPINE & SURGICAL HOSPITAL                               |
| 14. LAUREL RIDGE TREATMENT CENTER                                       |
| 15. THE CHILDREN’S HOSPITAL OF SAN ANTONIO - STONE OAK                  |





RESTAURANTS

1. RED LOBSTER

2. LONGHORN STEAKHOUSE

3. OLIVE GARDEN

4. BOB'S CHOP HOUSE

5. PIATTI

6. PAPPADAEUX'S

7. CHUY'S

8. CHEDDAR'S

9. CAR-B-CUTIE SMOKEHOUSE

10. RUTHS CHRIS

11. BUSH'S CHICKEN

12. FREDDY'S FROZEN CUSTARD

13. WILLIE'S GRILL & ICEHOUSE

14. SCUZZI'S ITALIAN RESTAURANT

15. MCALISTER'S DELI

16. PAESANOS 1604

17. THAI HUT

18. PAPA JOHN'S PIZZA

19. CHIN'S GARDEN

20. SUBWAY

21. BIG'Z BURGER JOINT

22. GALPÃO GAUCHO BRAZILIAN STEAKHOUSE

23. BURGER KING

24. EDDIE V'S PRIME SEAFOOD

25. COVER 3 SAN ANTONIO

26. TACO CABANA

27. JIM'S RESTAURANT

28. THE LONGHORN CAFE

29. EL JALISCO GRILL & CANTINA
30. PIZZA HUT

31. MOD PIZZA

32. J-PRIME STEAKHOUSE

33. SNOOZE AN A.M. EATERY

34. PASHA MEDITERRANEAN GRILL

35. PANERA BREAD

36. ALDINO THE VINEYARD

37. WHICH WHICH

38. CHIPOTLE

39. STONE WERKS BIG ROCK GRILLE

40. DEMO'S GREEK FOOD

41. SUSHISHIMA JAPANESE RESTAURANT

42. WENDY'S

43. SAKE CAFE

44. EL TACO GRILL

45. HEAVENLY PHO VIETNAMESE CUISINE

46. POPEYE'S LOUISIANA KITCHEN

47. MCDONALD'S

48. LUBY'S

49. CHICK-FIL-A

50. WHATABURGER

51. WAHKEE CHINESE SEAFOOD RESTAURANT

52. TACO BLVD

53. SILO

54. COSTA PACIFICA

55. EGGSPECTATION

56. ZOE'S KITCHEN
57. CHAMA GAUCHA BRAZILIAN STEAKHOUSE

58. TARKA INDIAN KITCHEN

59. TORCHY'STACOS

60. JERUSALEM GRILL

61. SONIC DRIVE-IN

62. RAISING CANE'S CHICKEN FINGERS

63. SUSHI SEVEN

64. LI'S SICHUAN RESTAURANT

65. THAI CHILI CUISINE

66. VIDA MIA

67. TRILOGY PIZZA

68. TACO CABANA

69. IHOP

70. MILANO ITALIAN GRILL

71. L TACO STONE OAK

72. LITTLE CAESER'S PIZZA

73. PIZZA HUT

74. JERSEY MIKE'S SUBS

75. WENDY'S

76. LUCIANO NEIGHBORHOOD PIZZERIA

77. TAIPEI RESTAUARANT

78. MARIOLI MEXICAN CUISINE

79. CORNER BAKERY CAFÉ

80. SUSHI ZUSHI

81. MELLOW MUSHROOM

82. LE PEEP

83. THUNDERCLOUD SUBS
84. DELICIOUS TAMALES

85. TORO KITCHEN + BAR

86. KIRBY'S STEAKHOUSE

87. LITTLE WOODROWS STONE OAK

88. THE HOPPY MONK

89. FIRST WATCH - SONTERRA

90. KUMORI SUSHI & TEPPANYAKI

91. JASON'S DELI

92. SMASHIN' CRAB

93. EMBERS WOOD FIRE KITCHEN & TAP

94. GORDITAS DONA TOTA

95. KRISPY KREME DOUGHNUTS

96. FIVE GUYS

97. CHIK-FIL-A

98. WHATABURGER

99. SONIC DRIVE-IN

100. MCDONALD'S

101. BUFFALO WILD WINGS

102. PERICO'S RESTAURANT

103. SUBWAY RESTAURANTS

104. LAS PALAPAS

105. RED ROBIN GOURMET BURGERS

106. PEI WEI

107. FISH CITY GRILL

108. ZIO'S ITALIAN KITCHEN

109. CHUY'S

110. CHILI'S GRILL & BAR

111. SIZZLING WOK





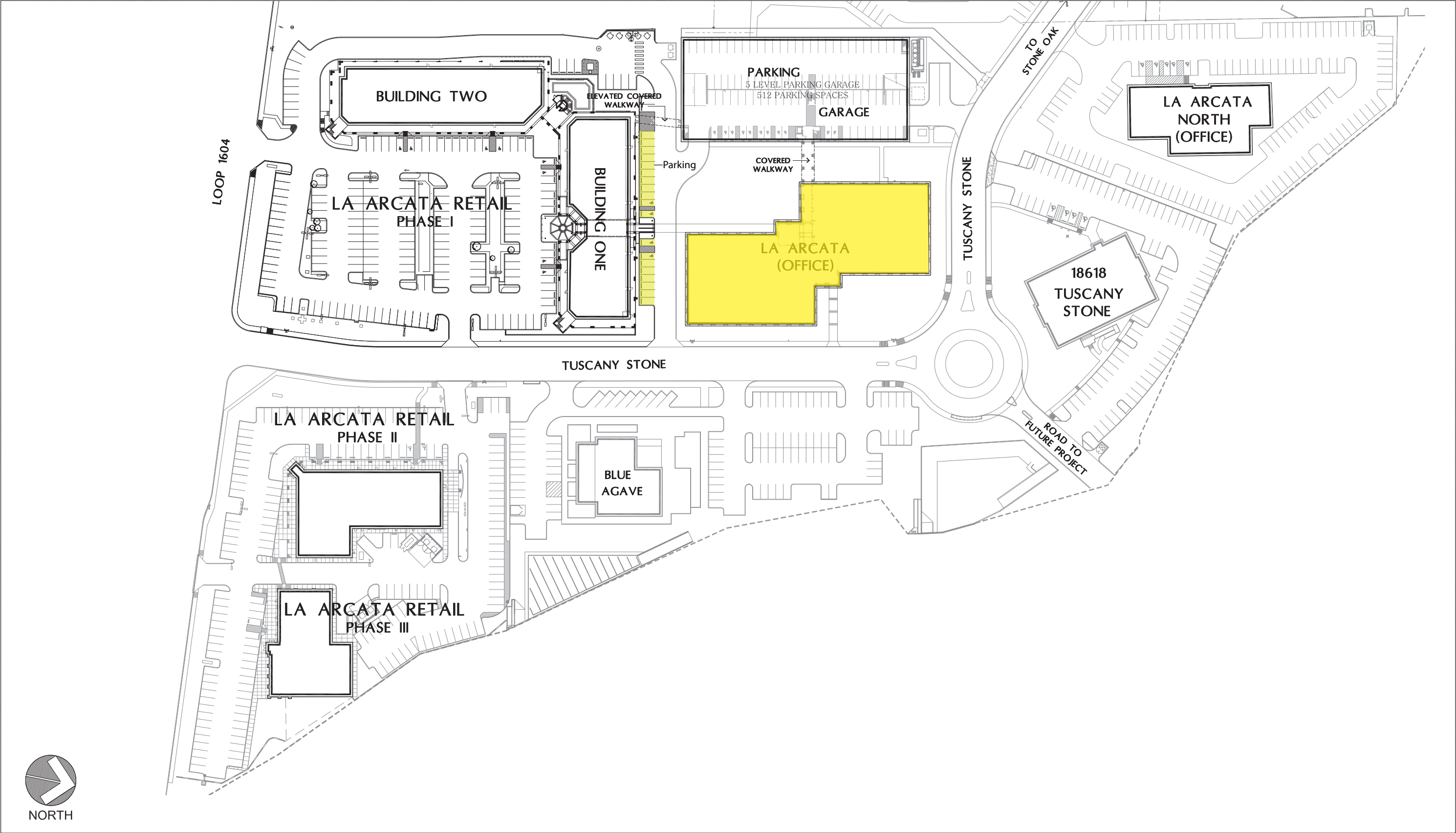


# Quote Sheet

Spaces Available	Suite 180	4,102
	Suite 245	6,413
	Suite 255	6,782
	Suite 275	3,174
	Suite 350	14,812
(Note: All above figures in Rentable Square Feet)		
Base Rental	\$27.00 per rentable square foot, Triple Net (with \$0.50 annual increases) (Note: Actual Base Rental under any proposed lease is a function of the relationship of expense and income characteristics, the credit worthiness of tenant, condition of space leased, term of lease and other factors deemed important by the Landlord)	
First Month's Rental	Due upon execution of lease document by Tenant	
Term	Three (3) years to ten (10)	
Improvements	Negotiable	
Pylon Signage	\$100 per month	
Deposit	Equal to one (1) month's Base Rental	
Financial Information	Required prior to submission of lease document by Landlord	
Parking	1:250 per rentable square foot parking ratio (All structured parking)	
Disclosure	A copy of the attached Real Estate Agency Disclosure Form should be signed by the appropriate individual and one (1) copy should be returned to Landlord's leasing representative(s).	



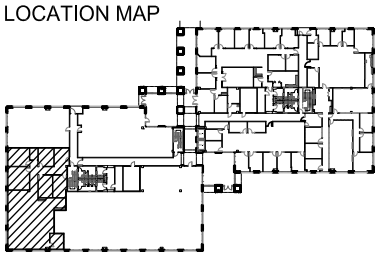
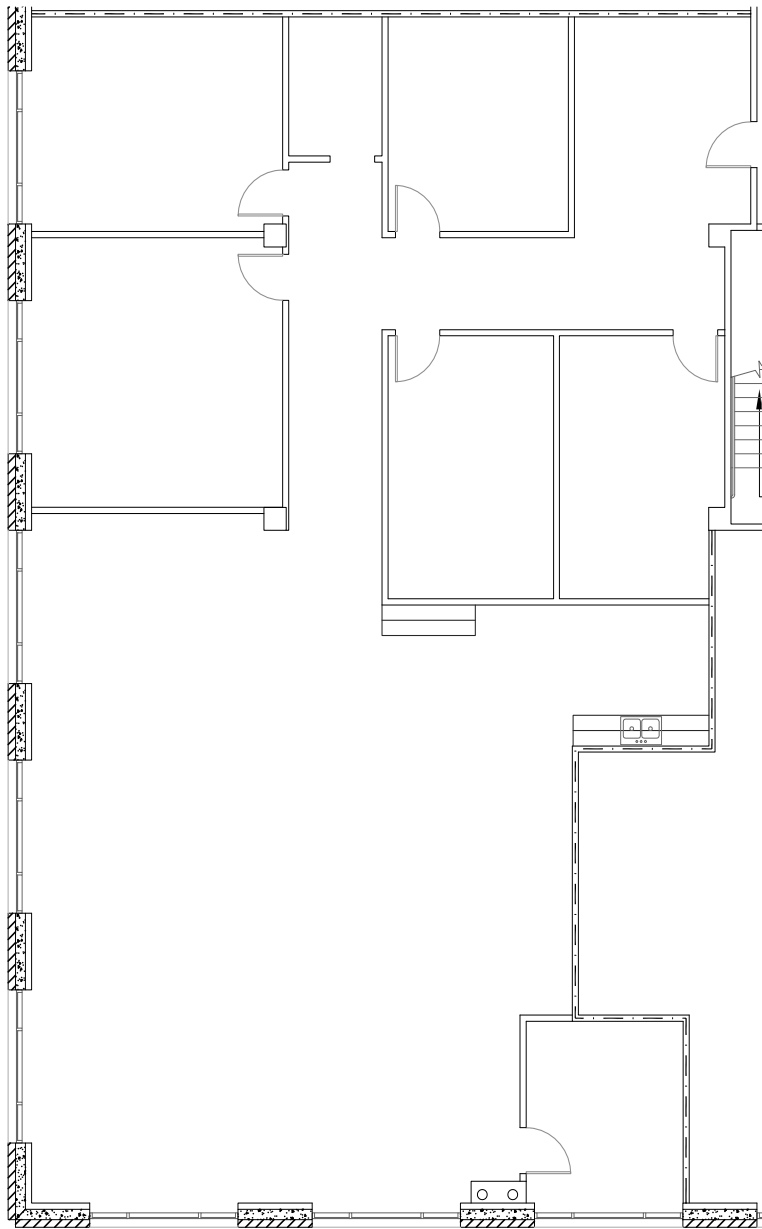
# Site Plan - La Arcata Development





# Floor Plan - Suite 180

4,102 RSF



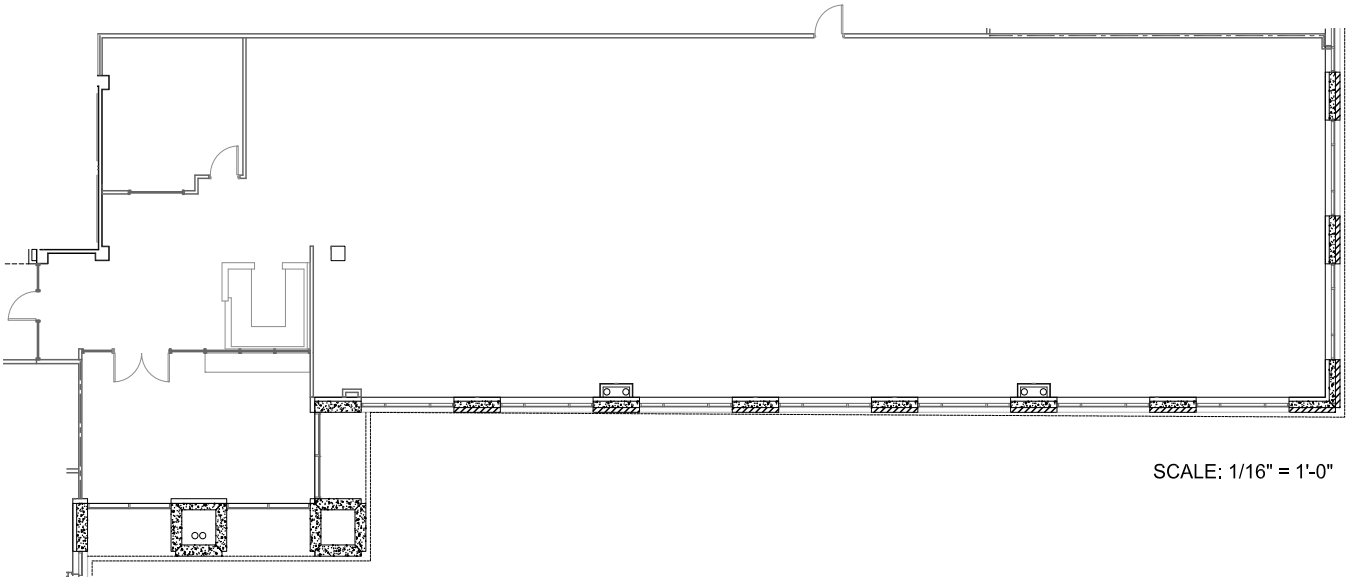
SCALE: 3/32" = 1'-0"

03.17.25

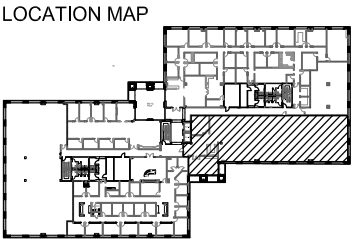


# Floor Plan - Suite 245

6,413 RSF



SCALE: 1/16" = 1'-0"



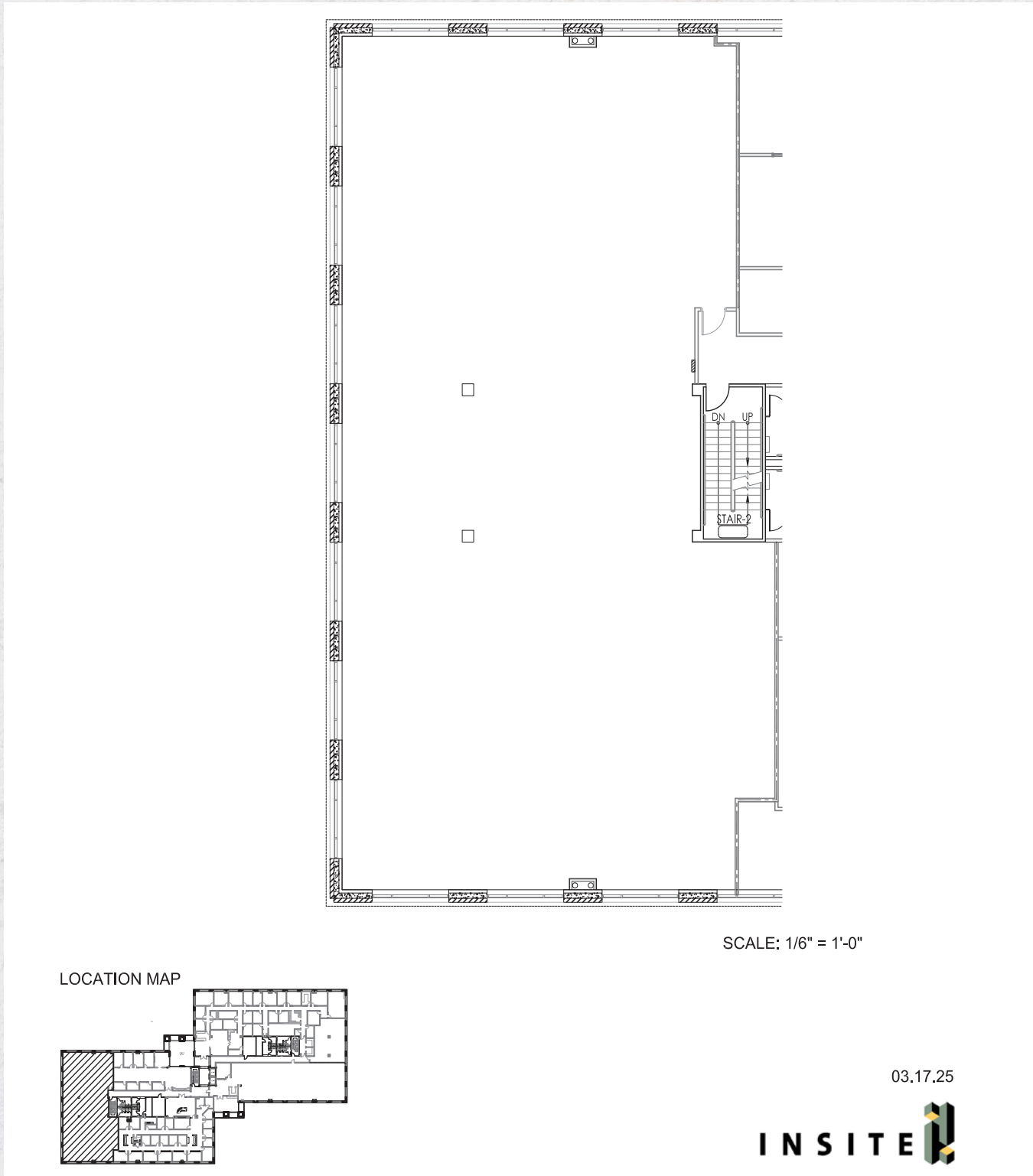
03.17.25





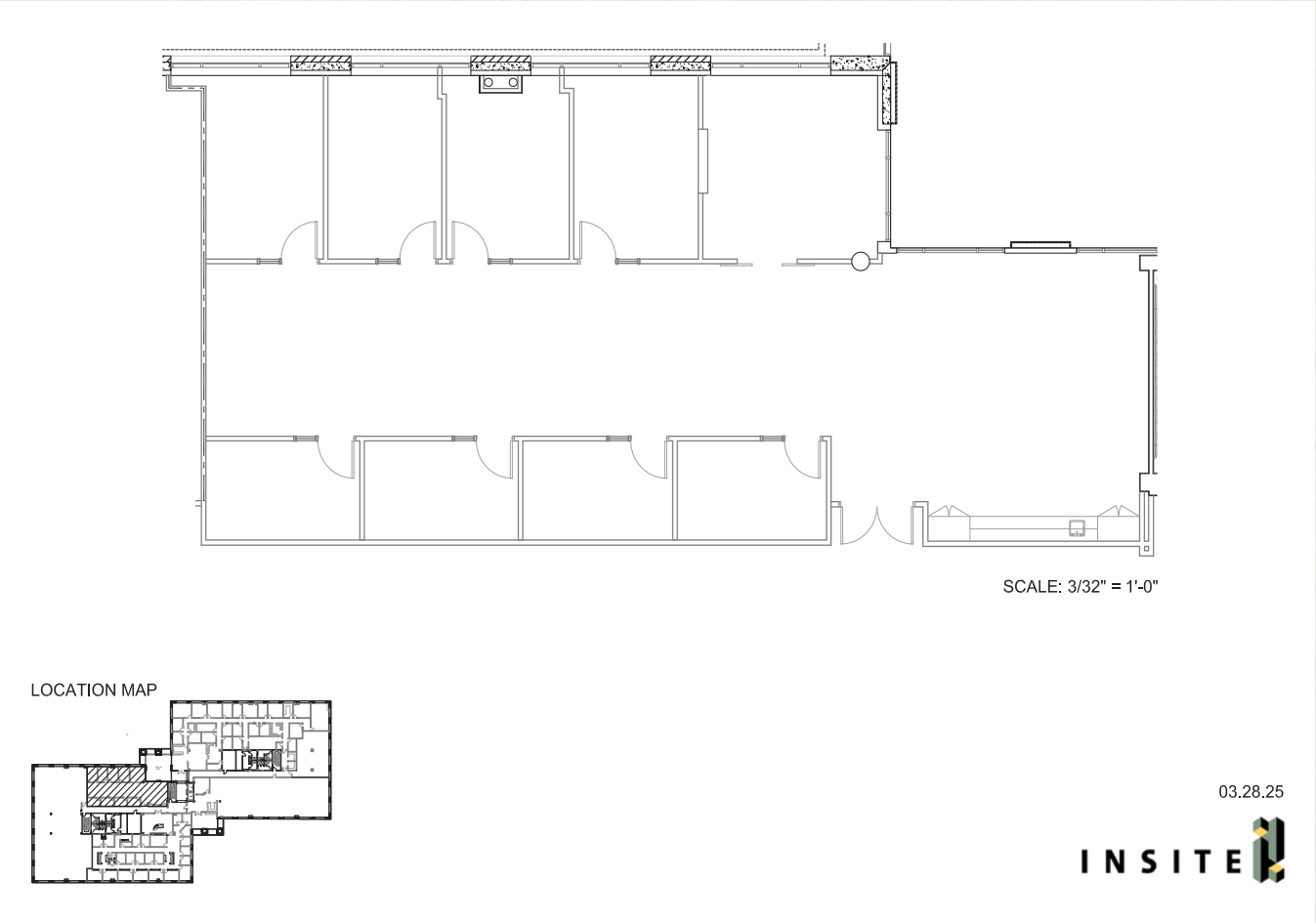
# Floor Plan - Suite 255

6,782 RSF



# Floor Plan - Suite 275

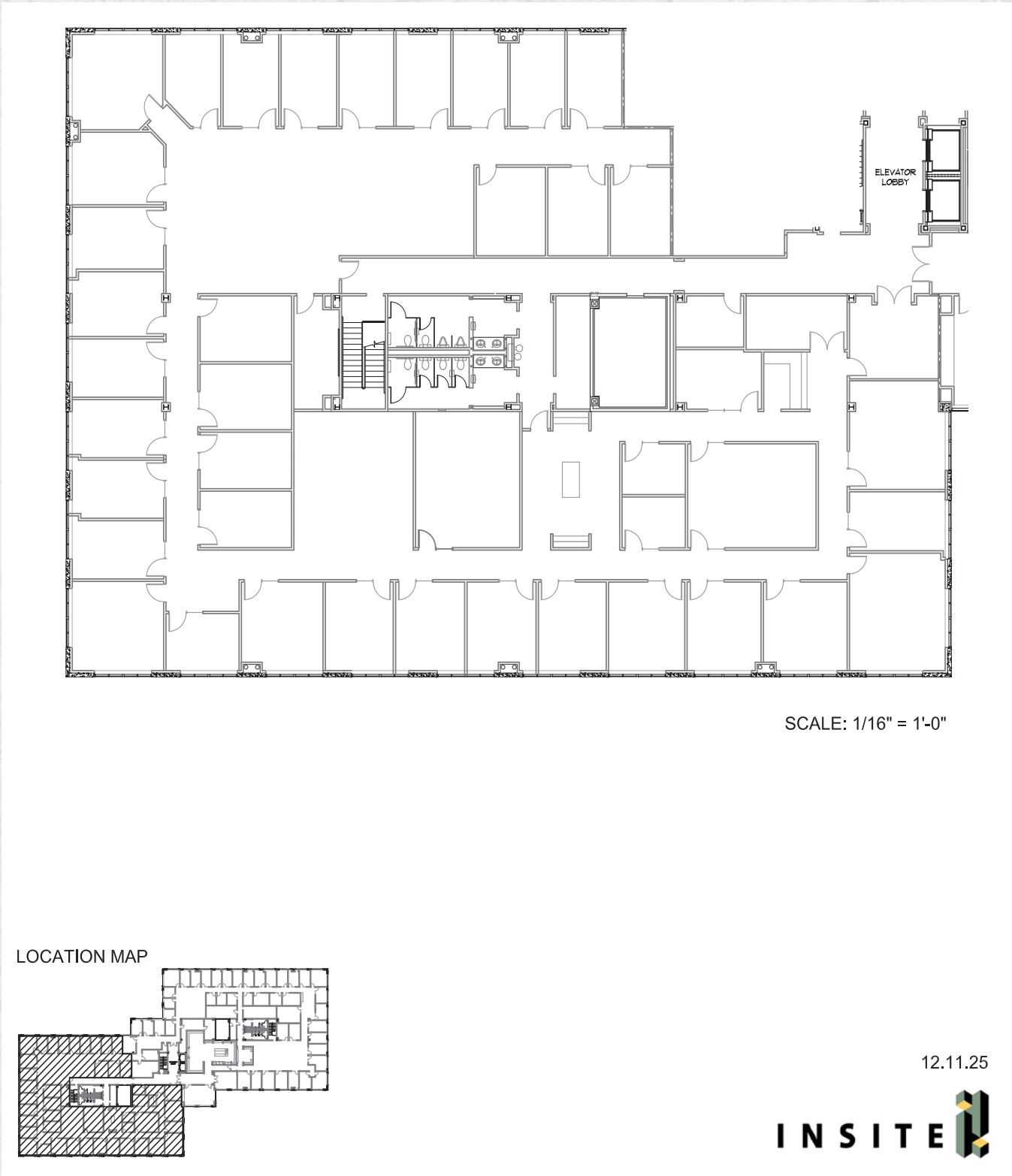
3,174 RSF





# Floor Plan - Suite 350

14,812 RSF



# Demographics - 1 Mile

Summary	Census 2010		Census 2020		2025		2030			
Population	5,813		7,785		7,513		7,195			
Households	2,666		3,634		3,576		3,485			
Families	1,566		2,057		1,920		1,845			
Average Household Size	2.14		2.08		2.04		2.00			
Owner Occupied Housing Units	1,367		1,413		1,432		1,464			
Renter Occupied Housing Units	1,299		2,221		2,144		2,020			
Median Age	40.4		39.7		40.4		41.7			
Trends: 2025-2030 Annual Rate			Area		State		National			
Population			-0.86%		1.10%		0.42%			
Households			-0.51%		1.41%		0.64%			
Families			-0.79%		1.31%		0.54%			
Owner HHs			0.44%		1.80%		0.91%			
Median Household Income			2.04%		2.27%		2.53%			
Households by Income					2025		2030			
					Number	Percent	Number	Percent		
<\$15,000					113	3.2%	108	3.1%		
\$15,000 - \$24,999					162	4.5%	133	3.8%		
\$25,000 - \$34,999					227	6.3%	193	5.5%		
\$35,000 - \$49,999					336	9.4%	293	8.4%		
\$50,000 - \$74,999					704	19.7%	665	19.1%		
\$75,000 - \$99,999					342	9.6%	326	9.4%		
\$100,000 - \$149,999					657	18.4%	641	18.4%		
\$150,000 - \$199,999					293	8.2%	300	8.6%		
\$200,000+					742	20.7%	828	23.8%		
Median Household Income					\$91,737		\$101,473			
Average Household Income					\$138,108		\$147,746			
Per Capita Income					\$65,044		\$70,861			
			Census 2010		Census 2020		2025		2030	
Population by Age			Number	Percent	Number	Percent	Number	Percent	Number	Percent
0 - 4			244	4.2%	364	4.7%	337	4.5%	319	4.4%
5 - 9			282	4.9%	410	5.3%	355	4.7%	315	4.4%
10 - 14			362	6.2%	424	5.4%	405	5.4%	353	4.9%
15 - 19			399	6.9%	432	5.5%	398	5.3%	383	5.3%
20 - 24			409	7.0%	541	6.9%	477	6.3%	433	6.0%
25 - 34			847	14.6%	1,255	16.1%	1,234	16.4%	1,124	15.6%
35 - 44			720	12.4%	964	12.4%	981	13.1%	986	13.7%
45 - 54			869	14.9%	869	11.2%	823	11.0%	791	11.0%
55 - 64			778	13.4%	912	11.7%	806	10.7%	746	10.4%
65 - 74			483	8.3%	753	9.7%	736	9.8%	710	9.9%
75 - 84			292	5.0%	535	6.9%	638	8.5%	673	9.4%
85+			129	2.2%	325	4.2%	323	4.3%	360	5.0%
			Census 2010		Census 2020		2025		2030	
Race and Ethnicity			Number	Percent	Number	Percent	Number	Percent	Number	Percent
White Alone			4,918	84.6%	4,789	61.5%	4,465	59.4%	4,114	57.2%
Black Alone			188	3.2%	354	4.5%	348	4.6%	330	4.6%
American Indian Alone			15	0.3%	41	0.5%	42	0.6%	41	0.6%
Asian Alone			341	5.9%	365	4.7%	370	4.9%	363	5.0%
Pacific Islander Alone			5	0.1%	6	0.1%	6	0.1%	6	0.1%
Some Other Race Alone			233	4.0%	598	7.7%	607	8.1%	621	8.6%
Two or More Races			113	1.9%	1,631	21.0%	1,675	22.3%	1,720	23.9%
Hispanic Origin (Any Race)			1,661	28.6%	2,816	36.2%	2,881	38.3%	2,982	41.4%
Data Note: Income is expressed in current dollars.										
Source: Esri forecasts for 2025 and 2030. U.S. Census Bureau 2020 decennial Census in 2020 geographies.										



# Demographics - 3 Mile

Summary	Census 2010		Census 2020		2025		2030			
Population	75,744		83,761		84,223		84,086			
Households	30,436		34,035		35,348		36,096			
Families	20,358		22,618		22,554		22,770			
Average Household Size	2.47		2.44		2.36		2.31			
Owner Occupied Housing Units	19,453		20,066		20,639		21,467			
Renter Occupied Housing Units	10,983		13,969		14,709		14,629			
Median Age	37.8		39.7		40.4		41.1			
Trends: 2025-2030 Annual Rate			Area		State		National			
Population			-0.03%		1.10%		0.42%			
Households			0.42%		1.41%		0.64%			
Families			0.19%		1.31%		0.54%			
Owner HHs			0.79%		1.80%		0.91%			
Median Household Income			1.77%		2.27%		2.53%			
					2025		2030			
Households by Income					Number	Percent	Number	Percent		
<\$15,000					1,354	3.8%	1,268	3.5%		
\$15,000 - \$24,999					1,015	2.9%	862	2.4%		
\$25,000 - \$34,999					1,916	5.4%	1,651	4.6%		
\$35,000 - \$49,999					3,150	8.9%	2,874	8.0%		
\$50,000 - \$74,999					5,268	14.9%	5,047	14.0%		
\$75,000 - \$99,999					4,515	12.8%	4,381	12.1%		
\$100,000 - \$149,999					6,791	19.2%	6,726	18.6%		
\$150,000 - \$199,999					4,032	11.4%	4,364	12.1%		
\$200,000+					7,307	20.7%	8,923	24.7%		
Median Household Income					\$102,455		\$111,855			
Average Household Income					\$140,034		\$152,067			
Per Capita Income					\$58,541		\$64,981			
			Census 2010		Census 2020		2025		2030	
Population by Age			Number	Percent	Number	Percent	Number	Percent	Number	Percent
0 - 4			4,245	5.6%	4,209	5.0%	4,136	4.9%	4,133	4.9%
5 - 9			5,201	6.9%	5,009	6.0%	4,540	5.4%	4,241	5.0%
10 - 14			5,813	7.7%	5,674	6.8%	5,055	6.0%	4,586	5.5%
15 - 19			5,200	6.9%	5,567	6.6%	5,187	6.2%	4,623	5.5%
20 - 24			4,692	6.2%	5,226	6.2%	5,179	6.1%	4,903	5.8%
25 - 34			9,665	12.8%	10,987	13.1%	12,029	14.3%	12,332	14.7%
35 - 44			11,234	14.8%	10,963	13.1%	11,148	13.2%	11,520	13.7%
45 - 54			12,062	15.9%	11,328	13.5%	10,800	12.8%	10,361	12.3%
55 - 64			9,290	12.3%	10,620	12.7%	10,317	12.2%	9,885	11.8%
65 - 74			4,688	6.2%	8,285	9.9%	8,282	9.8%	8,600	10.2%
75 - 84			2,504	3.3%	4,163	5.0%	5,564	6.6%	6,380	7.6%
85+			1,151	1.5%	1,729	2.1%	1,987	2.4%	2,521	3.0%
			Census 2010		Census 2020		2025		2030	
Race and Ethnicity			Number	Percent	Number	Percent	Number	Percent	Number	Percent
White Alone			63,585	83.9%	50,209	59.9%	48,489	57.6%	46,295	55.1%
Black Alone			2,725	3.6%	3,813	4.6%	3,990	4.7%	3,991	4.7%
American Indian Alone			274	0.4%	538	0.6%	574	0.7%	591	0.7%
Asian Alone			3,862	5.1%	4,830	5.8%	5,186	6.2%	5,395	6.4%
Pacific Islander Alone			72	0.1%	99	0.1%	104	0.1%	107	0.1%
Some Other Race Alone			3,136	4.1%	5,581	6.7%	5,938	7.1%	6,365	7.6%
Two or More Races			2,089	2.8%	18,691	22.3%	19,942	23.7%	21,343	25.4%
Hispanic Origin (Any Race)			22,228	29.3%	29,967	35.8%	31,944	37.9%	34,495	41.0%
Data Note: Income is expressed in current dollars.										
Source: Esri forecasts for 2025 and 2030. U.S. Census Bureau 2020 decennial Census in 2020 geographies.										

# Demographics - 5 Mile

Summary	Census 2010		Census 2020		2025		2030			
Population	179,597		204,443		207,150		208,365			
Households	72,647		82,700		86,542		88,857			
Families	47,845		54,287		54,653		55,700			
Average Household Size	2.46		2.46		2.38		2.33			
Owner Occupied Housing Units	45,333		48,708		50,000		52,084			
Renter Occupied Housing Units	27,313		33,992		36,542		36,774			
Median Age	37.1		38.9		39.7		40.5			
Trends: 2025-2030 Annual Rate			Area		State		National			
Population			0.12%		1.10%		0.42%			
Households			0.53%		1.41%		0.64%			
Families			0.38%		1.31%		0.54%			
Owner HHs			0.82%		1.80%		0.91%			
Median Household Income			1.62%		2.27%		2.53%			
					2025		2030			
Households by Income					Number	Percent	Number	Percent		
<\$15,000					3,820	4.4%	3,561	4.0%		
\$15,000 - \$24,999					2,996	3.5%	2,542	2.9%		
\$25,000 - \$34,999					4,985	5.8%	4,263	4.8%		
\$35,000 - \$49,999					8,371	9.7%	7,649	8.6%		
\$50,000 - \$74,999					13,115	15.2%	13,053	14.7%		
\$75,000 - \$99,999					10,387	12.0%	10,287	11.6%		
\$100,000 - \$149,999					17,152	19.8%	17,274	19.4%		
\$150,000 - \$199,999					9,441	10.9%	10,283	11.6%		
\$200,000+					16,275	18.8%	19,946	22.4%		
Median Household Income					\$98,764		\$107,012			
Average Household Income					\$133,715		\$145,071			
Per Capita Income					\$55,968		\$61,956			
			Census 2010		Census 2020		2025		2030	
Population by Age			Number	Percent	Number	Percent	Number	Percent	Number	Percent
0 - 4			10,681	5.9%	10,437	5.1%	10,293	5.0%	10,274	4.9%
5 - 9			12,329	6.9%	12,331	6.0%	11,283	5.4%	10,522	5.0%
10 - 14			13,485	7.5%	13,912	6.8%	12,545	6.1%	11,593	5.6%
15 - 19			11,947	6.7%	13,787	6.7%	12,939	6.2%	11,930	5.7%
20 - 24			11,398	6.3%	13,009	6.4%	13,563	6.5%	13,473	6.5%
25 - 34			24,433	13.6%	27,689	13.5%	29,821	14.4%	30,422	14.6%
35 - 44			26,903	15.0%	27,624	13.5%	28,165	13.6%	28,716	13.8%
45 - 54			28,191	15.7%	28,004	13.7%	27,445	13.2%	27,192	13.1%
55 - 64			21,881	12.2%	25,445	12.4%	25,010	12.1%	24,467	11.7%
65 - 74			10,840	6.0%	19,576	9.6%	19,887	9.6%	20,503	9.8%
75 - 84			5,449	3.0%	9,232	4.5%	12,362	6.0%	14,388	6.9%
85+			2,063	1.1%	3,397	1.7%	3,837	1.9%	4,884	2.3%
			Census 2010		Census 2020		2025		2030	
Race and Ethnicity			Number	Percent	Number	Percent	Number	Percent	Number	Percent
White Alone			147,713	82.2%	118,284	57.9%	114,607	55.3%	109,946	52.8%
Black Alone			7,668	4.3%	10,702	5.2%	11,335	5.5%	11,407	5.5%
American Indian Alone			844	0.5%	1,532	0.7%	1,630	0.8%	1,680	0.8%
Asian Alone			7,969	4.4%	11,972	5.9%	13,137	6.3%	13,909	6.7%
Pacific Islander Alone			187	0.1%	313	0.2%	341	0.2%	357	0.2%
Some Other Race Alone			9,753	5.4%	14,806	7.2%	15,771	7.6%	16,911	8.1%
Two or More Races			5,463	3.0%	46,834	22.9%	50,330	24.3%	54,155	26.0%
Hispanic Origin (Any Race)			58,273	32.4%	77,528	37.9%	82,910	40.0%	89,661	43.0%
Data Note: Income is expressed in current dollars.										
Source: Esri forecasts for 2025 and 2030. U.S. Census Bureau 2020 decennial Census in 2020 geographies.										



# San Antonio Market Overview

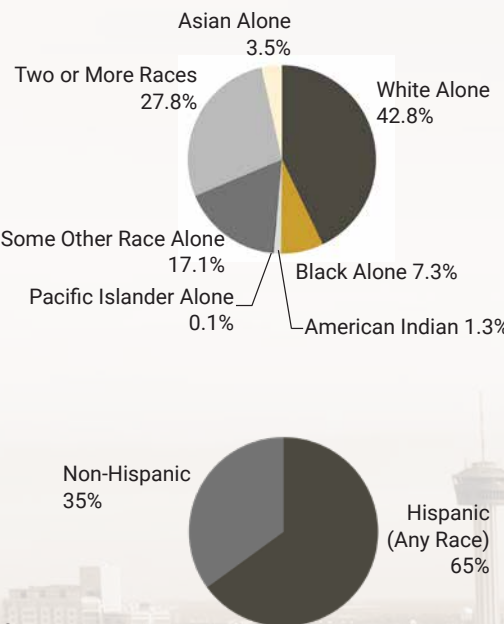
## Largest U.S. Cities

- 1 New York
- 2 Los Angeles
- 3 Chicago
- 4 Houston
- 5 Phoenix
- 6 Philadelphia
- 7 San Antonio
- 8 San Diego
- 9 Dallas
- 10 Jacksonville

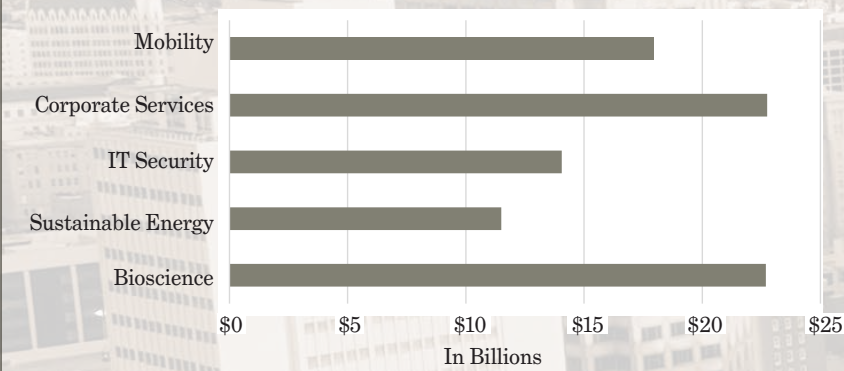


Located in South Central Texas within Bexar County, San Antonio occupies approximately 504 square miles. Situated about 140 miles north of the Gulf of Mexico where the Gulf Coastal Plain and Texas Hill Country meet.

## Ethnicity 2025 Forecast

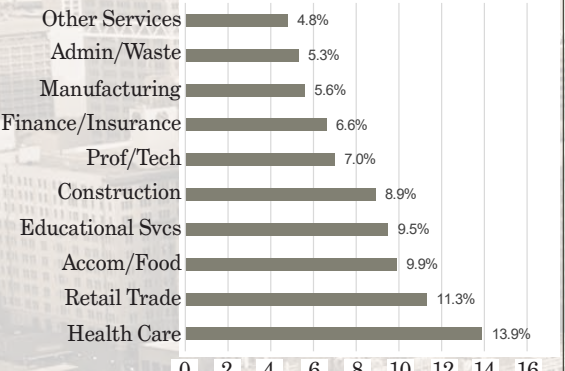


## Industry Clusters by GDP



Source: City of San Antonio Open Data Dec. 15, 2025

## Labor Force by Industry (Top Ten)



Source: US Census ACS

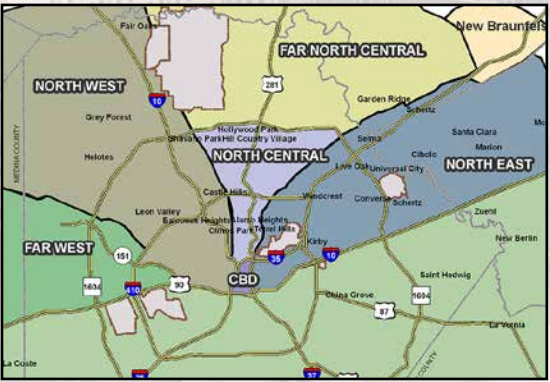
## San Antonio-New Braunfels Metro Area

	Population	Median Age	Total Households	Avg. Household Income	Median Household Income	Per Capita Income
2020 Census	1,434,395	34.9	538,191			
2025 Estimate	1,450,229	35.9	566,012	\$88,746	\$65,316	\$34,767
2030 Projection	1,472,091	37.1	588,682	\$96,616	\$71,692	\$38,765

Sources: U.S. Census Bureau 2020, ESRI forecasts for 2025 & 2030

# Stone Oak Area Overview

- Situated in the rolling plains of the Texas Hill Country in the northern suburbs of San Antonio
- With a residential concentration of more than fifty subdivisions, Stone Oak is a vibrant, fully self-sustaining community which serves as the centerpiece of the sprawling Far North sector
- Considered to be one of the most upscale and desirable areas of San Antonio featuring master-planned communities like Sonterra and Stone Oak as well as other affluent neighborhoods
- Known for having some of the top schools and largest mega-churches in San Antonio
- Conveniently located near the crossroads of Loop 1604 & US 281 – just minutes away from The University of Texas at San Antonio, South Texas Medical Center and Stone Oak Medical Center
- Served by a maturing medical hub anchored by North Central Baptist Hospital and Stone Oak Methodist Hospital
- The northern rim of Loop 1604, sometimes referred to as the “Energy Corridor” is anchored by Andeavor (formerly Tesoro) Headquarters, NuStar Energy Headquarters, Valero Headquarters, EOG Resources Regional Headquarters, Schlumberger, and other oil & gas companies
- Other major area employers include Clear Channel Media/iHeart Radio and Chase Bank Operations
- Nearby retail centers offer a wide selection of full-service and quick-service restaurants, shopping, services and other amenities
- Area recreational facilities include Top Golf, iFly along with Six Flags Fiesta Texas, Sonterra Country Club, Lifetime Fitness, Gold’s Gym, LA Fitness and more
- JW Marriot San Antonio Hill Country Resort, La Cantera Hill Country Resort and Eilan Hotel Resort and Spa
- As of the spring semester 2018, 28,675 students were enrolled at nearby UTSA, more than 1,600 from one year ago
- REOC San Antonio tracks more than 5.3 million square feet of retail lease space in the Far North sector along with nearly 3.1 million square feet of multi-tenant office lease space in addition to roughly 1.2 million square feet of medical-only office space







Information About Brokerage Services

Texas law requires all real estate license holders to give the following information about brokerage services to prospective buyers, tenants, sellers and landlords.

2-10-2025



TYPES OF REAL ESTATE LICENSE HOLDERS:

- **A BROKER** is responsible for all brokerage activities, including acts performed by sales agents sponsored by the broker.
- **A SALES AGENT** must be sponsored by a broker and works with clients on behalf of the broker.

A BROKER’S MINIMUM DUTIES REQUIRED BY LAW (A client is the person or party that the broker represents):

- Put the interests of the client above all others, including the broker’s own interests;
- Inform the client of any material information about the property or transaction received by the broker;
- Answer the client’s questions and present any offer to or counter-offer from the client; and
- Treat all parties to a real estate transaction honestly and fairly.

A LICENSE HOLDER CAN REPRESENT A PARTY IN A REAL ESTATE TRANSACTION:

**AS AGENT FOR OWNER (SELLER/LANDLORD):** The broker becomes the property owner's agent through an agreement with the owner, usually in a written listing to sell or property management agreement. An owner's agent must perform the broker’s minimum duties above and must inform the owner of any material information about the property or transaction known by the agent, including information disclosed to the agent or subagent by the buyer or buyer’s agent. **An owner’s agent fees are not set by law and are fully negotiable.**

**AS AGENT FOR BUYER/TENANT:** The broker becomes the buyer/tenant's agent by agreeing to represent the buyer, usually through a written representation agreement. A buyer's agent must perform the broker’s minimum duties above and must inform the buyer of any material information about the property or transaction known by the agent, including information disclosed to the agent by the seller or seller’s agent. **A buyer/tenant’s agent fees are not set by law and are fully negotiable.**

**AS AGENT FOR BOTH - INTERMEDIARY:** To act as an intermediary between the parties the broker must first obtain the written agreement of *each party* to the transaction. The written agreement must state who will pay the broker and, in conspicuous bold or underlined print, set forth the broker's obligations as an intermediary. A broker who acts as an intermediary:

- Must treat all parties to the transaction impartially and fairly;
- May, with the parties' written consent, appoint a different license holder associated with the broker to each party (owner and buyer) to communicate with, provide opinions and advice to, and carry out the instructions of each party to the transaction.
- Must not, unless specifically authorized in writing to do so by the party, disclose:
  - that the owner will accept a price less than the written asking price;
  - that the buyer/tenant will pay a price greater than the price submitted in a written offer; and
  - any confidential information or any other information that a party specifically instructs the broker in writing not to disclose, unless required to do so by law.

**AS SUBAGENT:** A license holder acts as a subagent when aiding a buyer in a transaction without an agreement to represent the buyer. A subagent can assist the buyer but does not represent the buyer and must place the interests of the owner first.

TO AVOID DISPUTES, ALL AGREEMENTS BETWEEN YOU AND A BROKER SHOULD BE IN WRITING AND CLEARLY ESTABLISH:

- The broker’s duties and responsibilities to you, and your obligations under the representation agreement.
- Who will pay the broker for services provided to you, when payment will be made and how the payment will be calculated.

**LICENSE HOLDER CONTACT INFORMATION:** This notice is being provided for information purposes. It does not create an obligation for you to use the broker’s services. Please acknowledge receipt of this notice below and retain a copy for your records.

REOC General Partner, LLC	493853	<a href="mailto:alyles@reocsanantonio.com">alyles@reocsanantonio.com</a>	(210) 524-4000
Licensed Broker /Broker Firm Name or Primary Assumed Business Name	License No.	Email	Phone
Andrew J. Lyles	720555	<a href="mailto:alyles@reocsanantonio.com">alyles@reocsanantonio.com</a>	(210) 524-1306
Designated Broker of Firm	License No.	Email	Phone
Andrew J. Lyles	720555	<a href="mailto:alyles@reocsanantonio.com">alyles@reocsanantonio.com</a>	(210) 524-1306
Licensed Supervisor of Sales Agent/ Associate	License No.	Email	Phone
Kimberly Sue Gatley	652669	<a href="mailto:kgatley@reocsanantonio.com">kgatley@reocsanantonio.com</a>	(210) 524-1320
Sales Agent/Associate’s Name	License No.	Email	Phone

Buyer/Tenant/Seller/Landlord Initials

Date

REOC San Antonio 8023 Vantage Dr, Suite 100, San Antonio, TX 78230

Phone 210 524 4000 Fax 210 5244029

Regulated by the Texas Real Estate Commission

Information available at [www.trec.texas.gov](http://www.trec.texas.gov)

IABS 1-1



Information About Brokerage Services

Texas law requires all real estate license holders to give the following information about brokerage services to prospective buyers, tenants, sellers and landlords.

2-10-2025



TYPES OF REAL ESTATE LICENSE HOLDERS:

- **A BROKER** is responsible for all brokerage activities, including acts performed by sales agents sponsored by the broker.
- **A SALES AGENT** must be sponsored by a broker and works with clients on behalf of the broker.

A BROKER’S MINIMUM DUTIES REQUIRED BY LAW (A client is the person or party that the broker represents):

- Put the interests of the client above all others, including the broker’s own interests;
- Inform the client of any material information about the property or transaction received by the broker;
- Answer the client’s questions and present any offer to or counter-offer from the client; and
- Treat all parties to a real estate transaction honestly and fairly.

A LICENSE HOLDER CAN REPRESENT A PARTY IN A REAL ESTATE TRANSACTION:

**AS AGENT FOR OWNER (SELLER/LANDLORD):** The broker becomes the property owner's agent through an agreement with the owner, usually in a written listing to sell or property management agreement. An owner's agent must perform the broker’s minimum duties above and must inform the owner of any material information about the property or transaction known by the agent, including information disclosed to the agent or subagent by the buyer or buyer’s agent. **An owner’s agent fees are not set by law and are fully negotiable.**

**AS AGENT FOR BUYER/TENANT:** The broker becomes the buyer/tenant's agent by agreeing to represent the buyer, usually through a written representation agreement. A buyer's agent must perform the broker’s minimum duties above and must inform the buyer of any material information about the property or transaction known by the agent, including information disclosed to the agent by the seller or seller’s agent. **A buyer/tenant’s agent fees are not set by law and are fully negotiable.**

**AS AGENT FOR BOTH - INTERMEDIARY:** To act as an intermediary between the parties the broker must first obtain the written agreement of *each party* to the transaction. The written agreement must state who will pay the broker and, in conspicuous bold or underlined print, set forth the broker's obligations as an intermediary. A broker who acts as an intermediary:

- Must treat all parties to the transaction impartially and fairly;
- May, with the parties' written consent, appoint a different license holder associated with the broker to each party (owner and buyer) to communicate with, provide opinions and advice to, and carry out the instructions of each party to the transaction.
- Must not, unless specifically authorized in writing to do so by the party, disclose:
  - that the owner will accept a price less than the written asking price;
  - that the buyer/tenant will pay a price greater than the price submitted in a written offer; and
  - any confidential information or any other information that a party specifically instructs the broker in writing not to disclose, unless required to do so by law.

**AS SUBAGENT:** A license holder acts as a subagent when aiding a buyer in a transaction without an agreement to represent the buyer. A subagent can assist the buyer but does not represent the buyer and must place the interests of the owner first.

TO AVOID DISPUTES, ALL AGREEMENTS BETWEEN YOU AND A BROKER SHOULD BE IN WRITING AND CLEARLY ESTABLISH:

- The broker’s duties and responsibilities to you, and your obligations under the representation agreement.
- Who will pay the broker for services provided to you, when payment will be made and how the payment will be calculated.

**LICENSE HOLDER CONTACT INFORMATION:** This notice is being provided for information purposes. It does not create an obligation for you to use the broker’s services. Please acknowledge receipt of this notice below and retain a copy for your records.

REOC General Partner, LLC	493853	<a href="mailto:alyles@reocsanantonio.com">alyles@reocsanantonio.com</a>	(210) 524-4000
Licensed Broker /Broker Firm Name or Primary Assumed Business Name	License No.	Email	Phone
Andrew J. Lyles	720555	<a href="mailto:alyles@reocsanantonio.com">alyles@reocsanantonio.com</a>	(210) 524-1306
Designated Broker of Firm	License No.	Email	Phone
Andrew J. Lyles	720555	<a href="mailto:alyles@reocsanantonio.com">alyles@reocsanantonio.com</a>	(210) 524-1306
Licensed Supervisor of Sales Agent/ Associate	License No.	Email	Phone
Todd Alan Gold	366305	<a href="mailto:tgold@reocsanantonio.com">tgold@reocsanantonio.com</a>	(210) 524-1309
Sales Agent/Associate’s Name	License No.	Email	Phone

Buyer/Tenant/Seller/Landlord Initials

Date

REOC San Antonio 8023 Vantage Dr, Suite 100, San Antonio, TX 78230

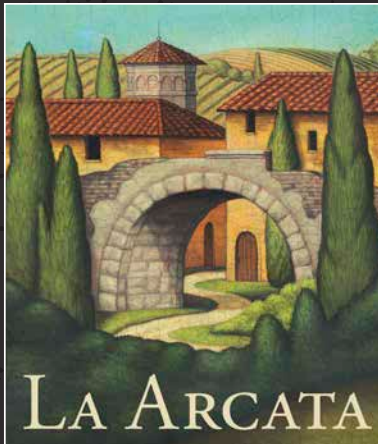
Phone 210 524 4000 Fax 210 5244029

Regulated by the Texas Real Estate Commission

Information available at [www.trec.texas.gov](http://www.trec.texas.gov)

IABS 1-1





8023 Vantage Dr.  
Suite 100  
San Antonio, Texas 78230

210 524 4000  
[reocsanantonio.com](http://reocsanantonio.com)