

For Lease
3047 West Parkway Blvd
Salt Lake City, UT



LEASE RATE
\$1.05
PSF NNN

PROPERTY DETAILS

Total SF: 4,922 SF
Office: 2,193 SF
Warehouse: 2,279 SF
Doors: (1) 8' x 9' DH
Power: 200 A, 208 V, 3 Phase
Ceiling: 24' Clear
Zoning: M

HIGHLIGHTS

- Professional Image
- Skylights
- Fire Sprinkled
- Great Access to 21st South Freeway
- T5 lighting in warehouse

Functional office floorplan consisting of multiple private offices, conference room, breakroom, and small bull pen.



CONTACT

Bob Mills

385.988.6477
bob@adventut.com

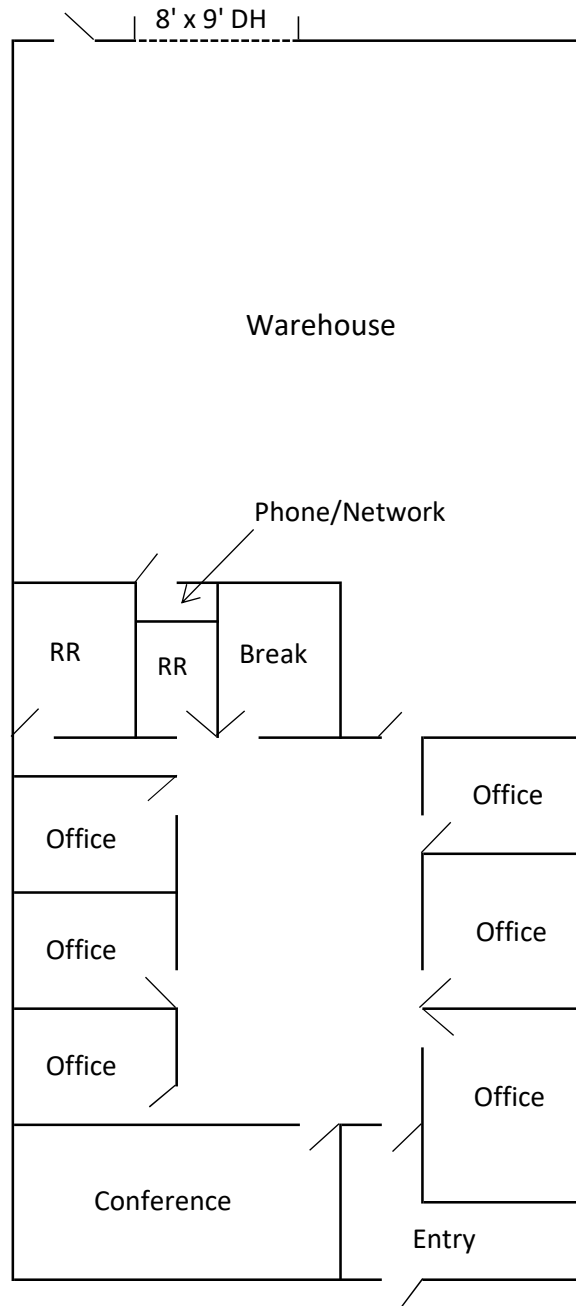
Riley Mills

385.988.6478
riley@adventut.com



5284 S. Commerce Dr. #C 274, Murray, Utah 84107 / o:801.433.2480 f: 801.290.3172

For Lease
3047 West Parkway Blvd
Salt Lake City, UT



5284 S. Commerce Dr. #C 274, Murray, Utah 84107 / o:801.433.2480 f: 801.290.3172