



OFFICE CONDO SPACE THE PALLADIUM AT 1325 18th Street, NW - Washington, DC 200036



- Great Restaurants and other amenities within walking distance
- A few steps off Connecticut Ave near N Street, just 2 blocks south of Dupont Circle Metro (red line)
- Previously occupied as Law Offices
- Roof Top Deck and Pool
- Parking Available on Site



**FOR SALE OR RENT!
Suites#103 & #104**

1325 18TH STREET, NW
WASHINGTON, DC

DUPONT CIRCLE LAW OFFICE
CONDO FOR SALE OR RENT..

MOVE IN CONDITION!

AVAILABLE IMMEDIATELY

GREAT WINDOW LINE

Neither Summit, its affiliates, employees, or representatives makes any representation or warranty as to the accuracy or reliability of this information. We encourage any user of this information to independently confirm its accuracy and completeness.

presented by
JAMES CONNELLY
Direct: 202.491.5300
Email: jconnelly@summitcre.com



1990 M Street, NW
Suite 600
Washington, D.C. 20036
Tel: 202.289.5400

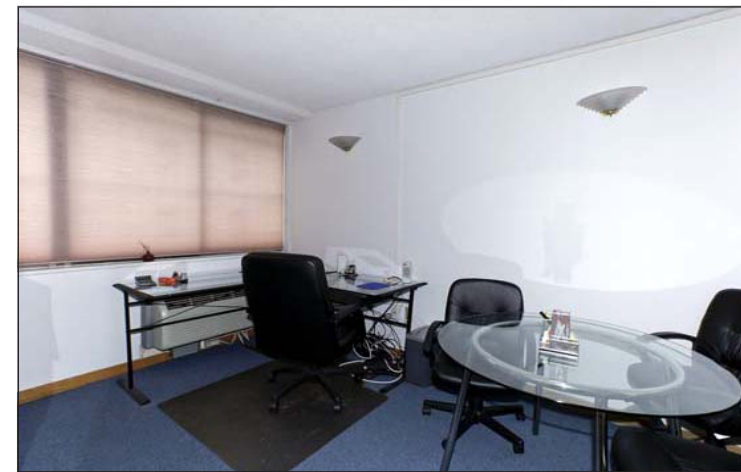
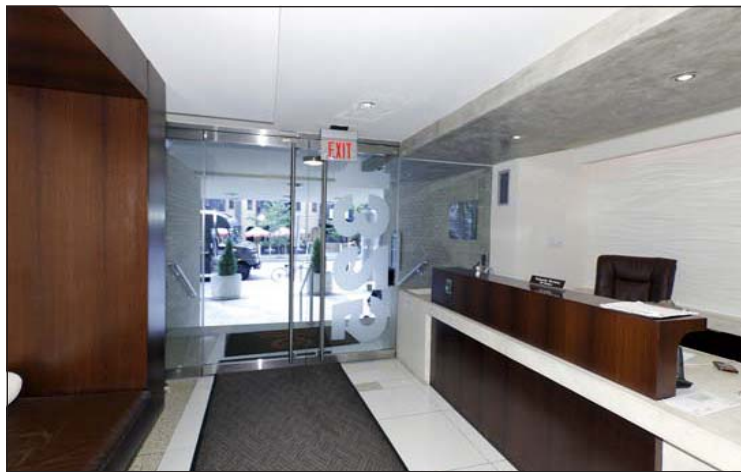


presented by
JAMES CONNELLY
Direct: 202.491.5300
Email: jconnelly@summitcre.com



1990 M Street, NW
Suite 600
Washington, D.C. 20036
Tel: 202.289.5400

Information Deemed Reliable, but not Guaranteed.



- Dentists Take Note! First Floor Location Suitable for 5 to 6 Operatories! Call for Design Layouts!
- Suitable for 4-5 professionals and three secretaries/receptionists
- Approx 1,350 sq ft, reception area, small conference room, work stations built in
- Small workroom for copier, coffee service, etc
- Sale Price: Upon Request
- Lease Price: Negotiable

