

BAYBORO 625 SOUTH

MEDICAL OFFICE BUILDING

625 6TH AVENUE SOUTH
ST. PETERSBURG, FL 33701

Premier Medical Office Space for Lease



Building owned and managed by
HEALTHCARE REALTY

BRIAN BREEDING, CCIM
Managing Director
+1 813 204 5369
brian.breeding@cushwake.com

WENDY GIFFIN
Executive Director
+1 727 599 3799
wendy.giffin@cushwake.com

Opportunity

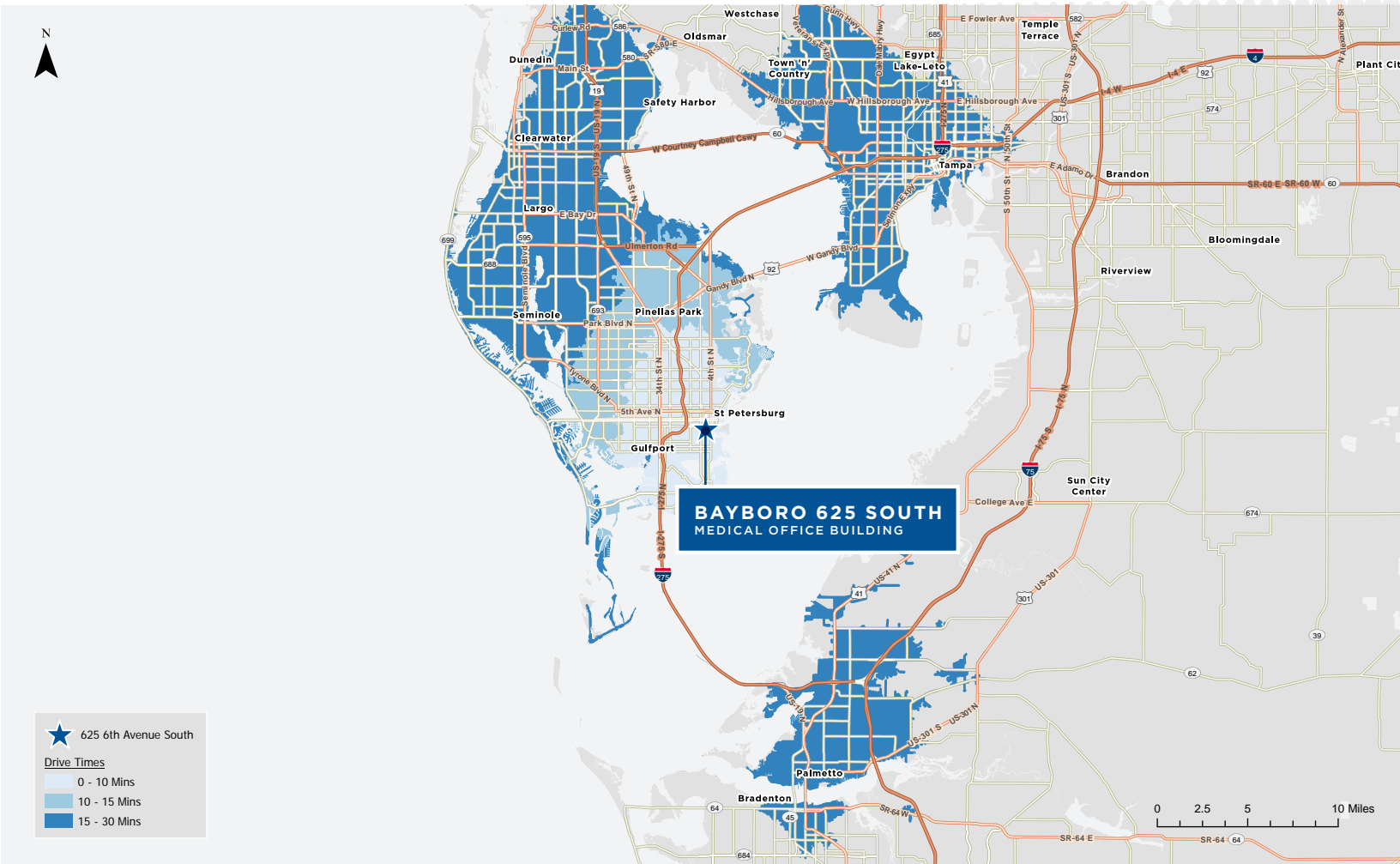
- 67,000+ SF 4-story medical office building
- Built in 2007
- Connected to both Bayfront Medical Center and Johns Hopkins All Children's Pediatric Hospital by climate controlled skybridges
- 5.20/1,000 SF parking in attached 8-story parking garage
- Specialty tenants include pediatric orthopedics, cardiology, dermatology and women's care
- Free patient valet parking services
- On the Bayfront/Orlando Health hospital campus

SIZE

67,364 SF

DEMOGRAPHICS

	1 MILE	3 MILES	5 MILES
2022 TOTAL POPULATION	172,841	326,629	1,041,463
2022 MEDIAN AGE	44.0 Yrs	46.0 Yrs	46.3 Yrs
2022 AVERAGE HOUSEHOLD INCOME	\$58,155	\$62,461	\$63,577



Building owned and managed by
HEALTHCARE REALTY

BRIAN BREEDING, CCIM

Managing Director
+1 813 204 5369
brian.breeding@cushwake.com

WENDY GIFFIN

Executive Director
+1 727 599 3799
wendy.giffin@cushwake.com

Nearby Amenities



BAYBORO 625 SOUTH
MEDICAL OFFICE BUILDING



Building owned and managed by
HEALTHCARE REALTY

BRIAN BREEDING, CCIM

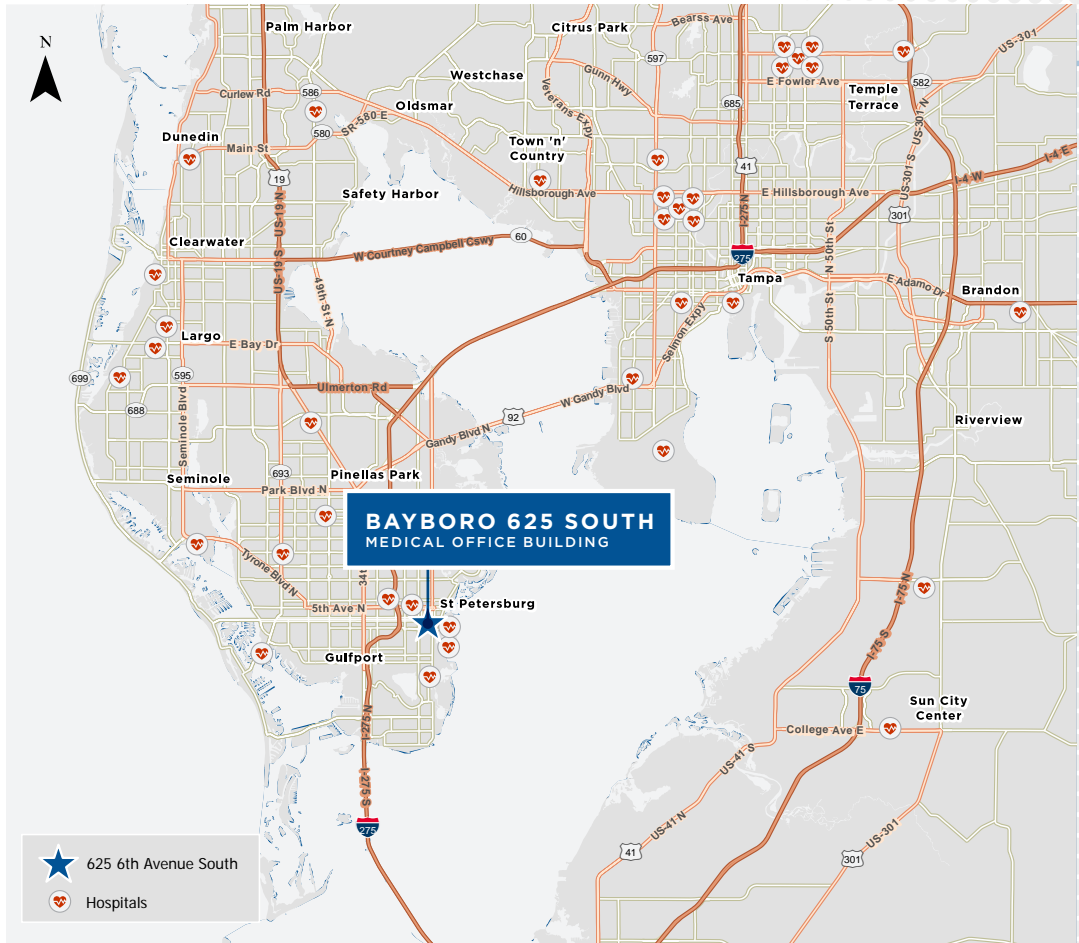
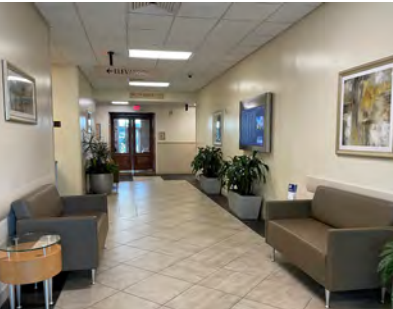
Managing Director
+1 813 204 5369
brian.breeding@cushwake.com

WENDY GIFFIN

Executive Director
+1 727 599 3799
wendy.giffin@cushwake.com

BAYBORO 625 SOUTH MEDICAL OFFICE BUILDING

Nearby Medical



Premier Medical Office Space for Lease

BRIAN BREEDING, CCIM
Managing Director
Florida Healthcare Advisory Practice
+1 813 204 5369
brian.breeding@cushwake.com

WENDY GIFFIN
Executive Director
+1 727 599 3799
wendy.giffin@cushwake.com

625 6TH AVENUE SOUTH
ST. PETERSBURG, FL 33701



Building owned and managed by
HEALTHCARE REALTY