

# Mid America Office Complex

Mid America Blvd. Oklahoma City, OK 73135



## PROPERTY INFORMATION

- **Type:** Office
- **Size:** 1,600 to 9,000 RSF
- **Rate:** Targeting \$40/SF Full-Service w/ Expense Stop

## PROPERTY HIGHLIGHTS

- Newly Constructed 2-Story Office Buildings Overlooking Pond.
- Located South of I-240 (45,000 AADT 2023)

## AVAILABILITY

- **Building B**
  - 1<sup>st</sup> Floor - Up to 9,000 SF
- **Building D**
  - 1<sup>st</sup> Floor - 1,800 SF
  - 2<sup>nd</sup> Floor - Up to 7,700 SF

# Property Information



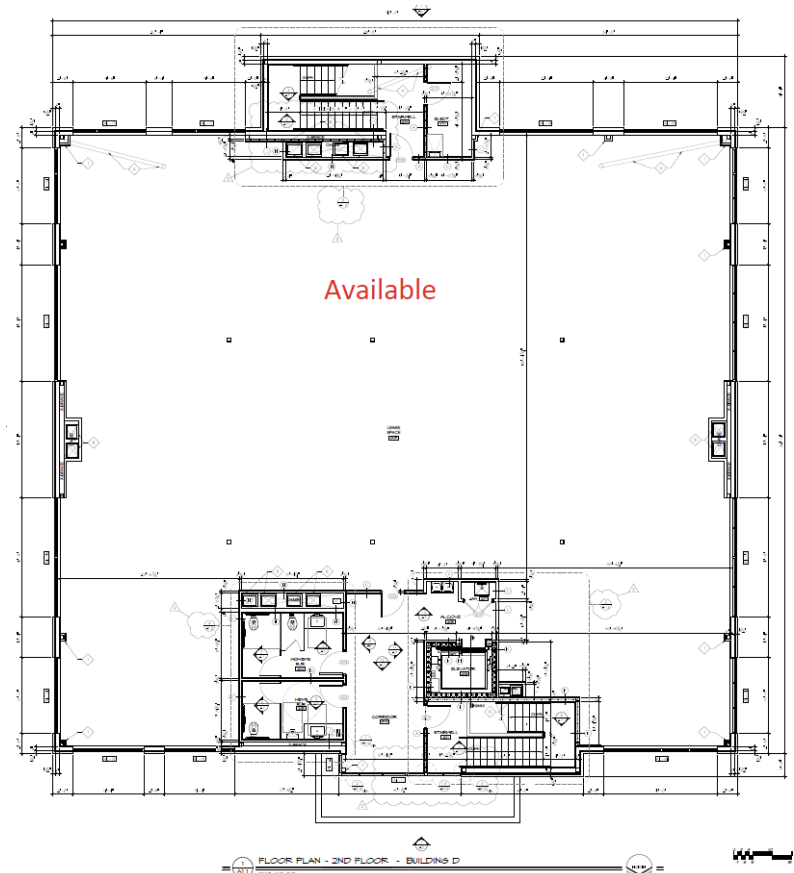
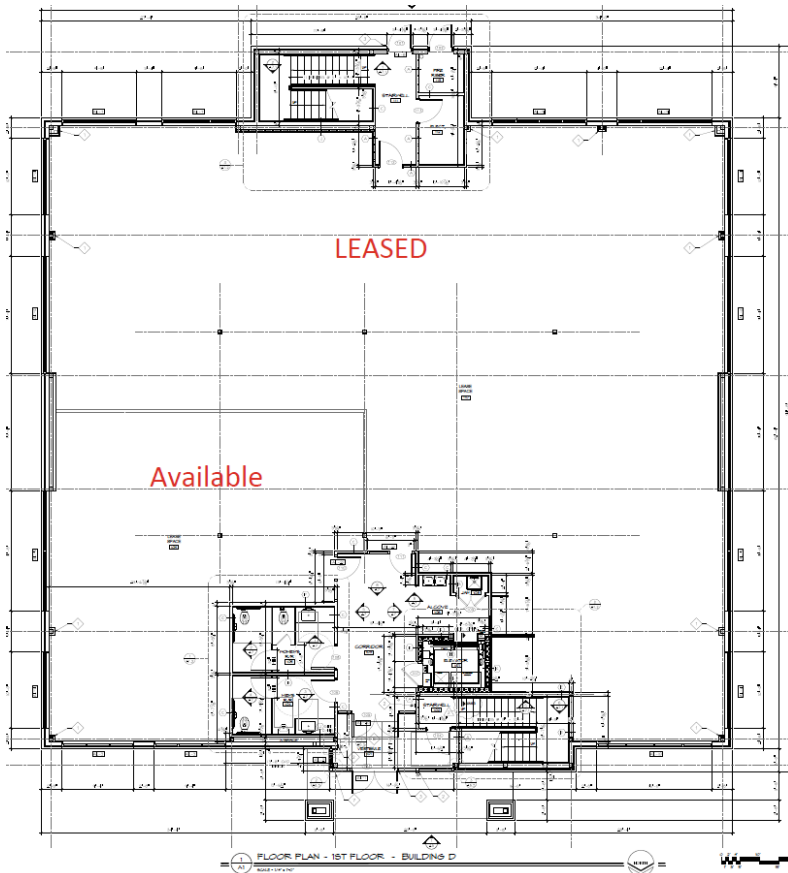
## Office Building D

- Year Built: 2026
- Bldg Size: 15,494 SF
- Build-out: Shell
- Rate: \$40/SF Full-Service w/ Exp Stop
- Allowance: Yes
- Parking – 6.9 / 1000 SF
- Class A Development in South OKC
- Newly Constructed 2-Story Office Buildings
- Suites Overlooking Pond.
- Located South of I-240 (45,000 AADT 2023)

# Availability

## **Building D**

- 1<sup>st</sup> Floor – 1,800 RSF
- 2<sup>nd</sup> Floor – Up to 7,724 RSF



# I-240 & MID-AMERICA BLVD.

OVERALL SITE CONCEPT  
MIDWEST CITY, OK

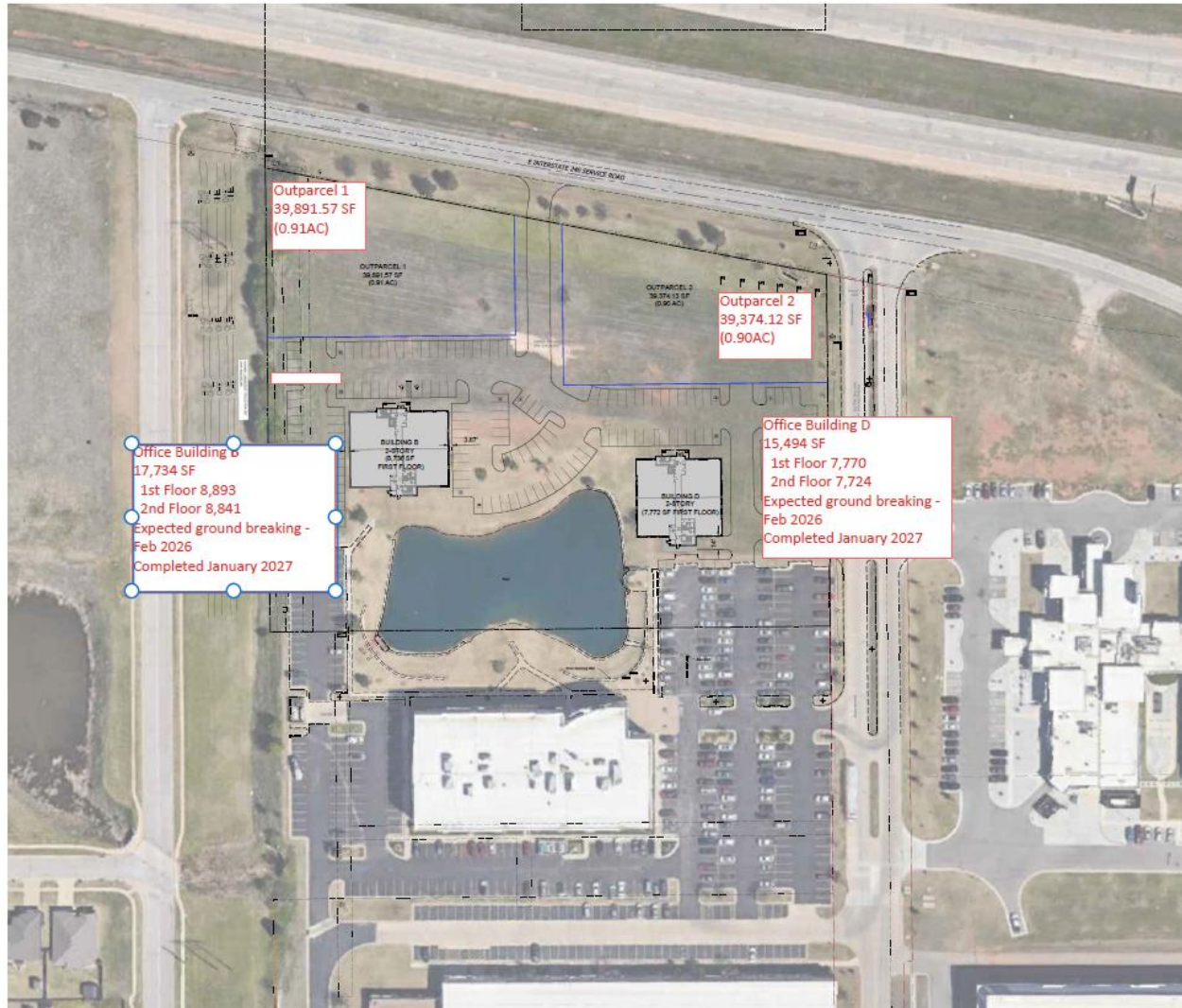
CONCEPT ILLUSTRATION  
DRAWING PREPARED SEPTEMBER 25, 2025

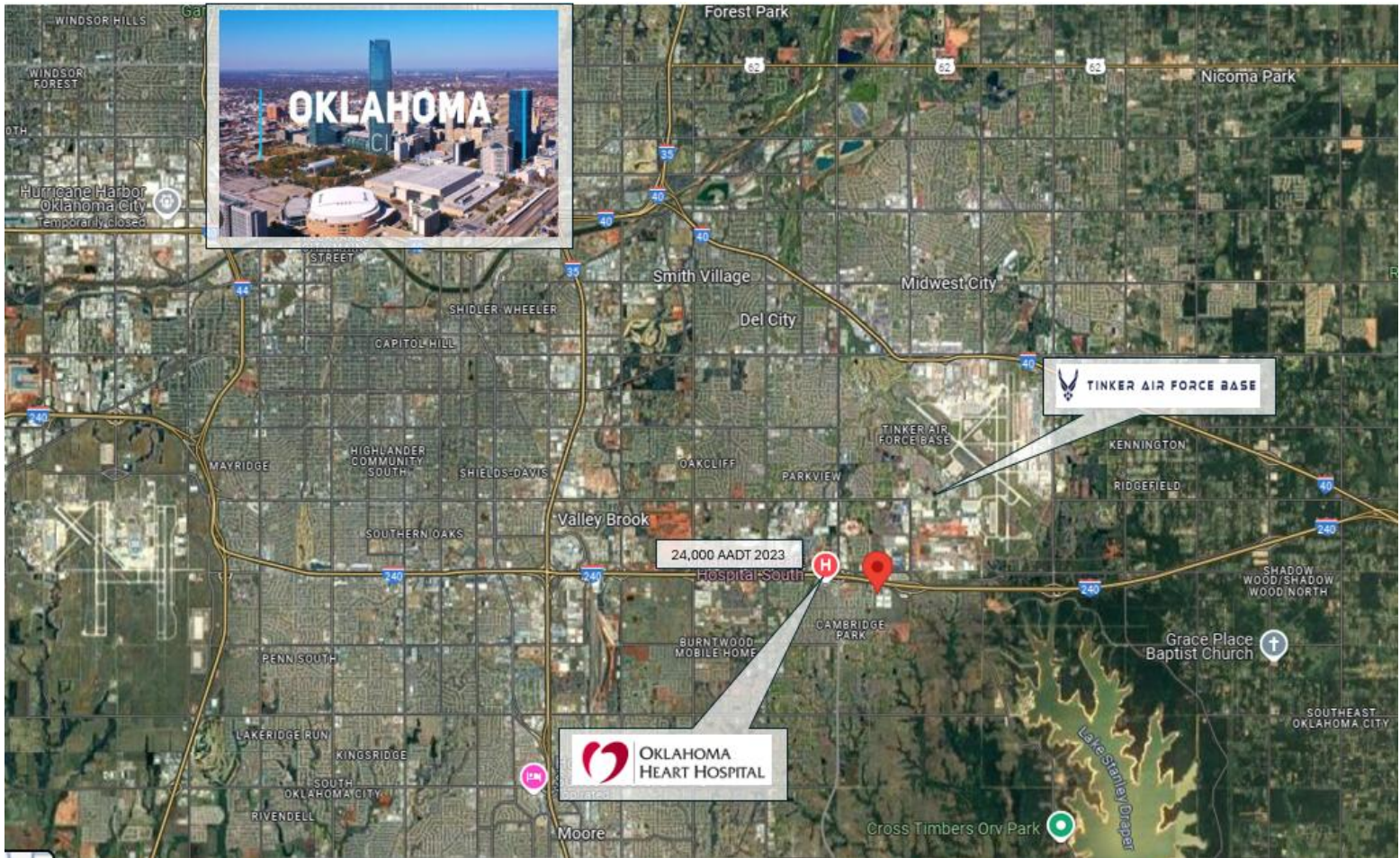


#### SITE DATA

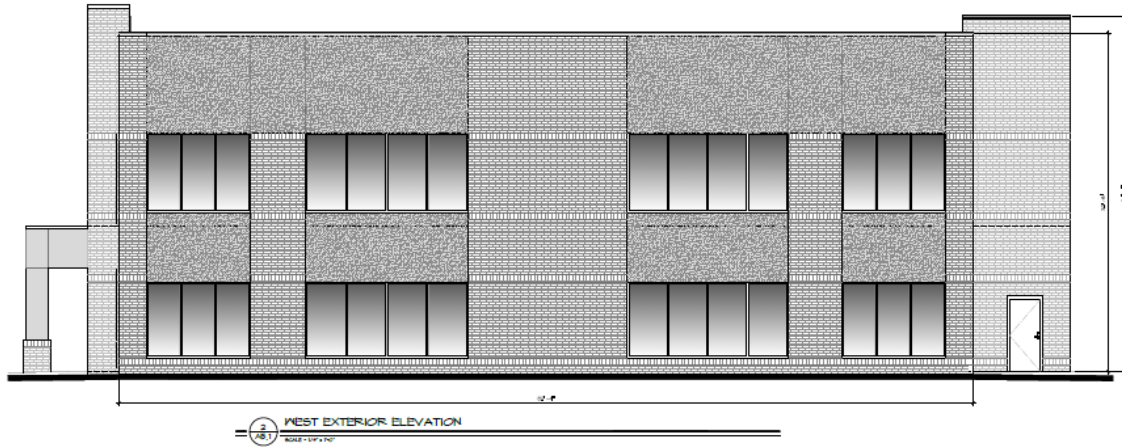
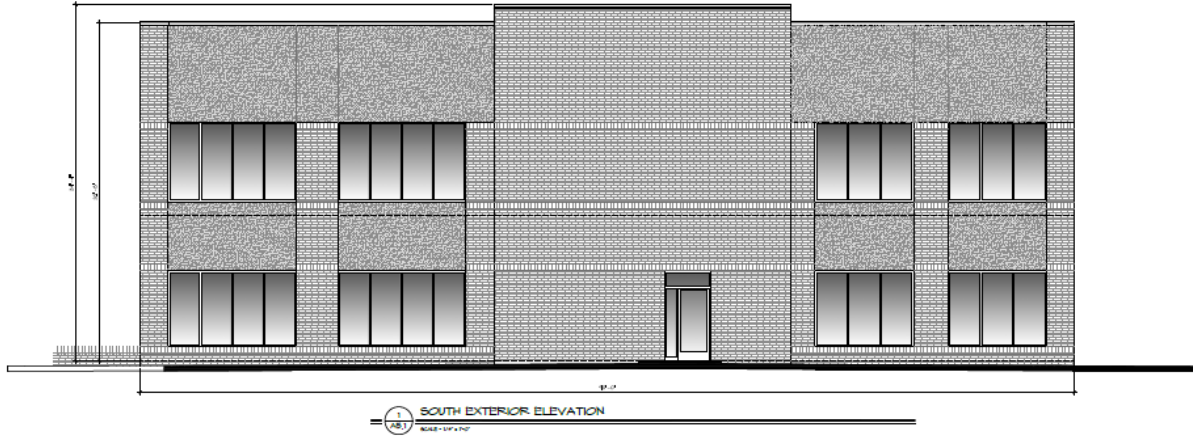
TOTAL PROVIDED PARKING: 150 P.S.  
HANDICAP PARKING PROVIDED: 8 P.S.  
PARKING SPACE DIMENSIONS PROVIDED: 9'x18' (TYP.)

ORIGINAL PAPER SIZE 24X36











## Contact



Eric Williams  
[ewilliams@mcgeecre.com](mailto:ewilliams@mcgeecre.com)  
(405) 819-1638  
McGee Commercial Real Estate  
4324 Grant Blvd  
Yukon, OK 73099