

**3007 WASHINGTON BLVD.** Marina Del Rey, CA 90292



CURRENT AVAILABILITIES

> Suite 225

+/- 2,091 SF

\$4.75/SF Full-Service Gross



CREATIVE SPACE



WALKER'S PARADISE



OPERABLE WINDOWS



OUTDOOR DECKS



FIBER INTERNET



BROKER BONUS



PARKING





**Premises**

+/- 2,091 SF

**Rental Rate**

\$4.75/SF FSG

Rate includes utilities

**Available**

February 1, 2025

**Term**

Negotiable

**Parking**

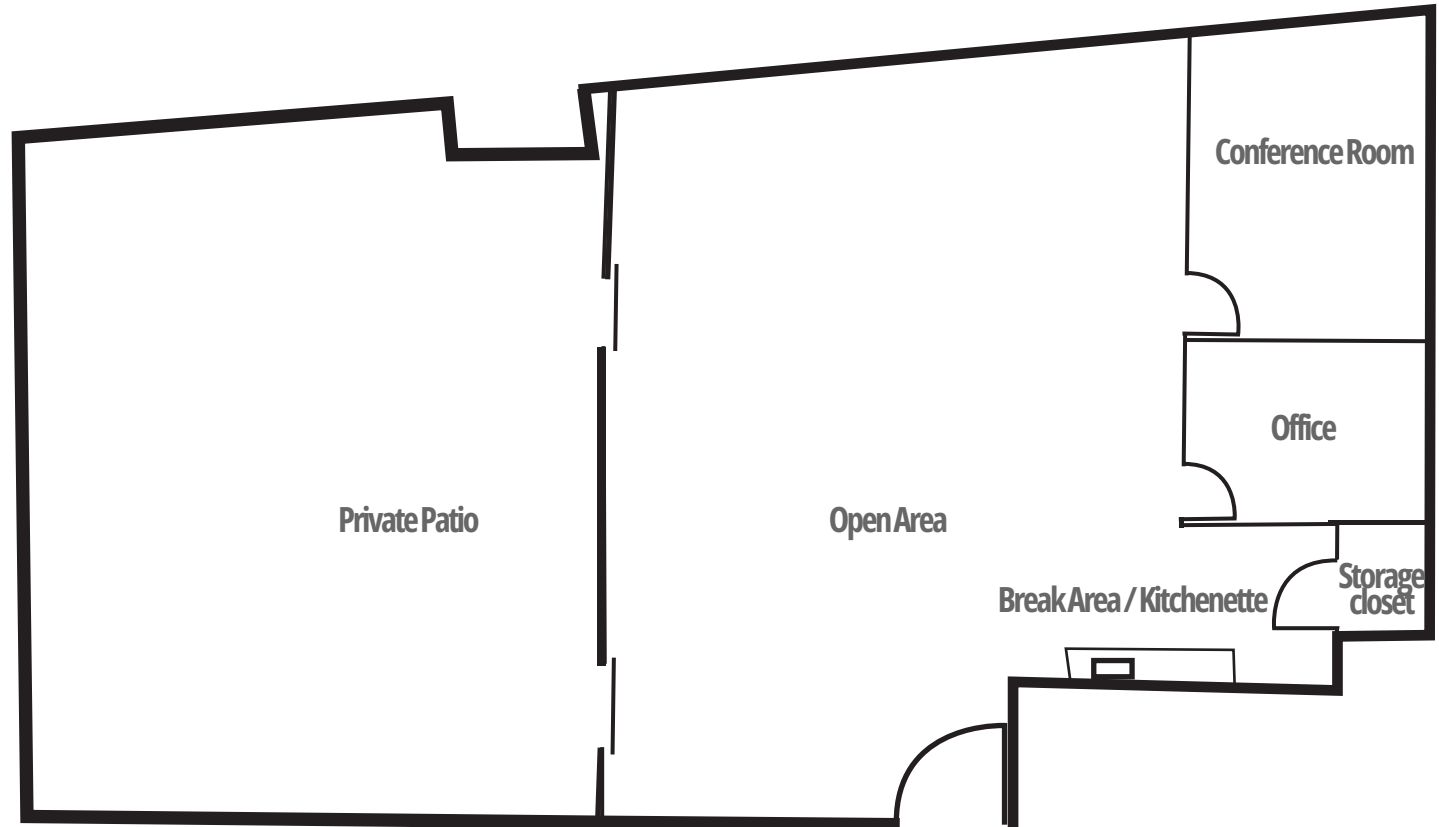
2/1000 SF @ \$150 /space/month

**LAYOUT**

- Open plan
- Office
- Conference room
- Storage closet
- Kitchenette

**FEATURES**

- Creative space
- High exposed ceilings
- Corner suite
- Natural light
- Large private patio
- Floor to ceiling windows







# RSFLA

Commercial Real Estate  
Leasing & Investment Sales

3007

## For leasing inquiries contact:

Kevin Simpson  
kevin@rsfla.com  
(310) 526-0911  
DRE 01891087

Michael Preiss  
michael@rsfla.com  
(310) 526-0910  
DRE 01095117

## RSFLA. BY YOUR SIDE. ON YOUR SIDE

73 Market Street, Venice, CA 90291  
Tel 310.526.0909 [www.rsfla.com](http://www.rsfla.com)

THIS IS A MARKETING COMMUNICATION

© 2023 RSFLA, Inc. All rights reserved. This information has been obtained from sources believed reliable but has not been verified for accuracy or completeness. RSFLA, Inc. makes no guarantee, representation or warranty and accepts no responsibility or liability as to the accuracy, completeness, or reliability of the information contained herein. You should conduct a careful, independent investigation of the property and verify all information. Any reliance on this information is solely at your own risk.