



Colliers

Boutique Commercial For Lease

32 Kainehe Street
Kailua, HI 96732



Property Information

Situated in the heart of Kailua, this boutique commercial space offers an exceptional opportunity to be part of a dynamic and desirable community. Just moments from world-renowned beaches, the location is perfect for attracting both locals and tourists. The surrounding area boasts a laid-back yet upscale ambiance, creating an inviting environment for a variety of businesses.

Located close to Kailua's main thoroughfare, known for its charming blend of boutique shops and cafes, this property benefits from high visibility and strong foot traffic. The vibrant street scene is complemented by nearby anchors such as Whole Foods Market, ULTA, Foodland, and Target, enhancing the area's appeal and accessibility.

TMK Number	1-4-3-57-47
Rent	Negotiable
CAM	\$1.28 PSF/Mo
Term	Negotiable
Zoning	B-2
Total Floors	2
Total Building SF	5,549 SF

Features

- Prime location within Kailua town and in close proximity to unique eateries, retail, office buildings and residential community
- Flexible layout suited for a cafe, coffee shop, art gallery, boutique or fitness/wellness studio
- Highly visible space that can appeal to visitors and locals
- Prominent street frontage and signage opportunities



Available Space

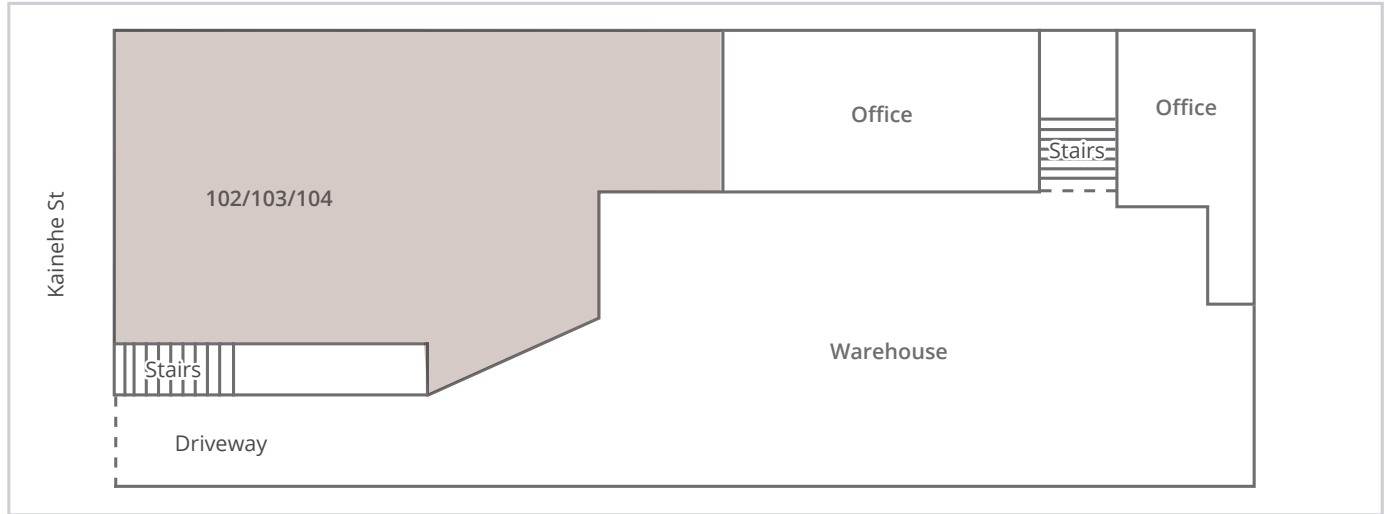
Suite 102/103/104 (1,762 SF)

Ground floor visibility for a cafe or boutique.

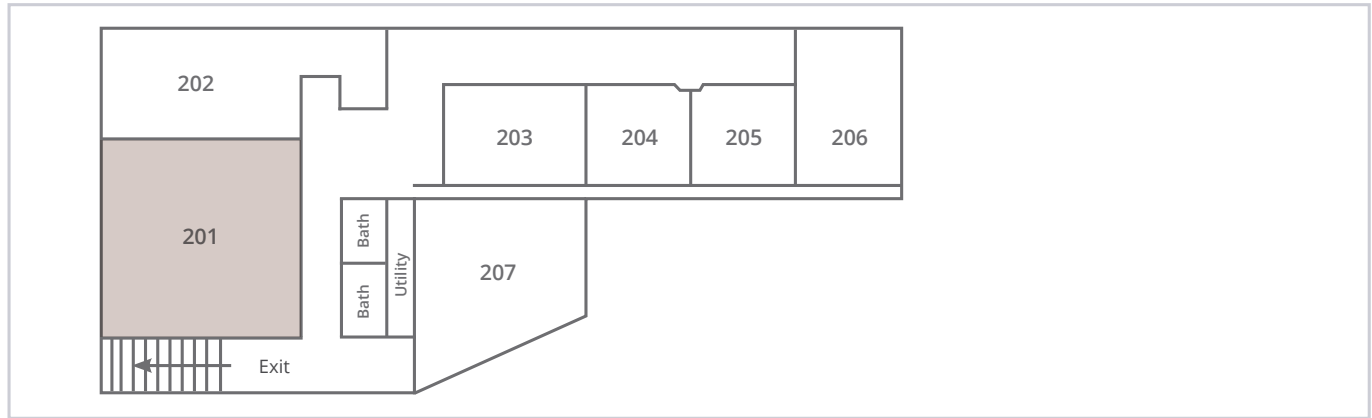
Suite 201 (320 SF) - Office Space

Ideal for boutique studio or office.

FIRST FLOOR



SECOND FLOOR



Area Map

Demographics (2024)

	1-Mile	3-Mile	5-Mile
Total Population	16,861	52,104	100,140
Households	6,166	17,892	31,856
Median Age	41.5	43.6	40.1
Bachelors Degree +	22.8%	26.1%	24.6%



Gabrielle Chock (S)
 Associate
 Retail Services Division
 Lic# RS-83065
 808 772 7444
 gabrielle.chock@colliers.com

Emalia Pietsch (S)
 Senior Vice President
 Retail Services Division
 Lic# RS-70893
 808 523 9710
 emalia.pietsch@colliers.com

