

Owned by:



MSC

THE QUINCY

741 SPRING GARDEN STREET

SPRING ARTS | PHILADELPHIA, PA

741

3,385 SF CORNER NEW CONSTRUCTION
RETAIL FOR LEASE



THE QUINCY

JOIN NEIGHBORING TENANTS



PROPERTY DETAILS

- ▶ Affordable new construction commercial space suitable for retail, studio, office or medical uses
- ▶ Excellent branding opportunity with 60' of frontage on Spring Garden Street, a major vehicular and commercial artery with 16,000 AADT
- ▶ Easy access by car; public transportation and Indego Bike Share at this intersection
- ▶ In the heart of the emerging Spring Arts neighborhood and one block from Phase II of the Rail Park, Philadelphia's 3-mile elevated public green space

DEMOGRAPHICS

Center City Trade Area
From the River to River between Girard Avenue & Tasker Avenue

EST. POPULATION

188,131

EST. MEDIAN HH INCOME

\$99,150

EST. MEDIAN AGE

35

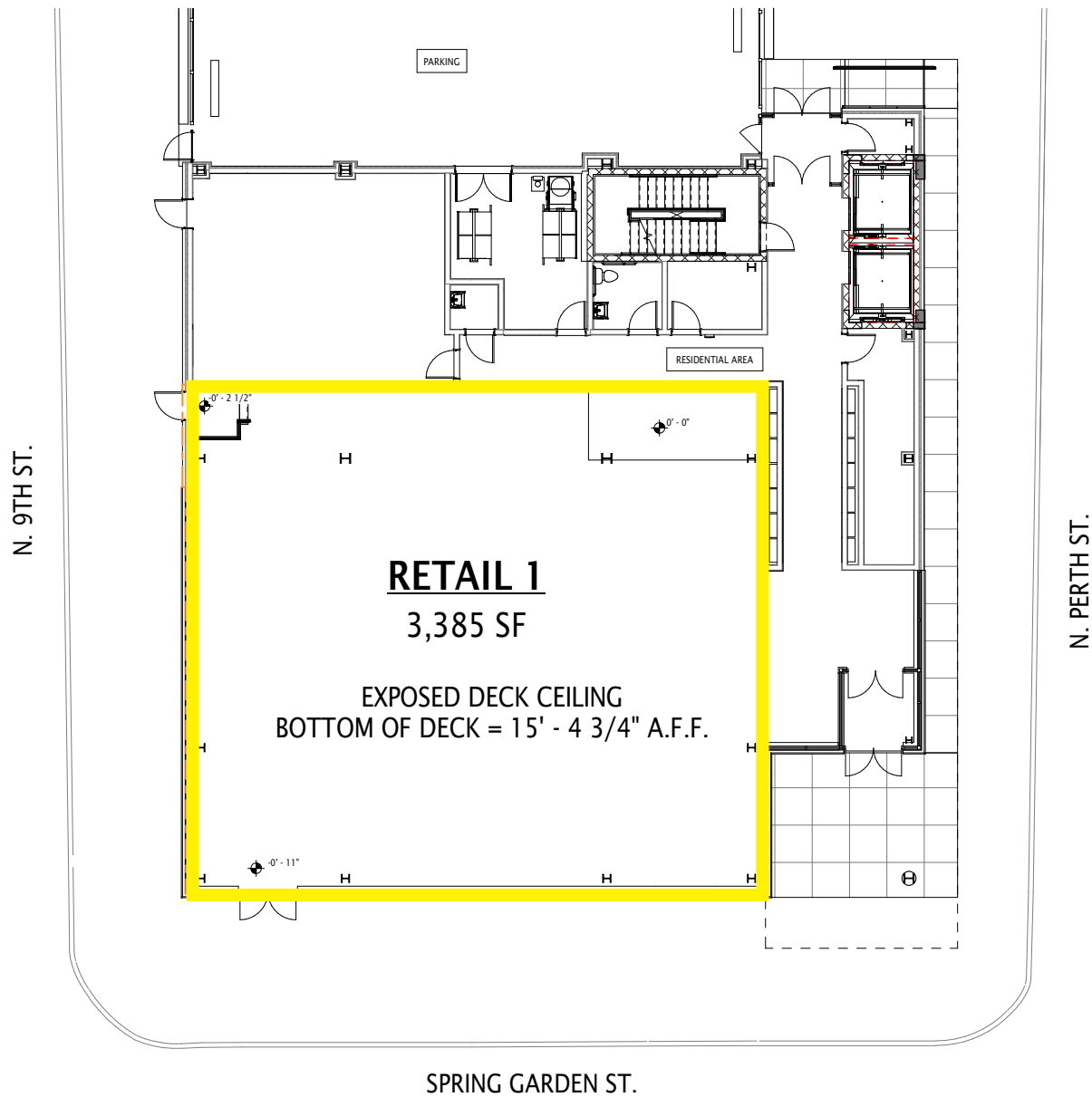
EST. EMPLOYEES

258,822

The information contained herein has been obtained from sources deemed reliable. MSC cannot verify it and makes no guarantee, warranty or representation about its accuracy. Any projections, opinions, assumptions or estimates provided by MSC are for discussion purposes only and do not represent the current or future performance of a property, location or market.

MSC

FLOOR PLAN



AERIAL



JOSH WEISS

jweiss@hellomsc.com

215.883.7389

JULIA MCMANUS

jmcmamus@hellomsc.com

215.883.7376

MSC

