

1950 FRANKLIN

TRANSIT-ORIENTED URBAN OFFICE CAMPUS.



Class A Office | **FOR LEASE**


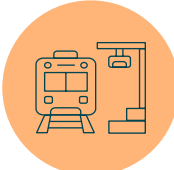
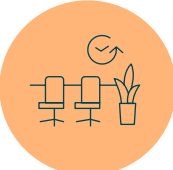
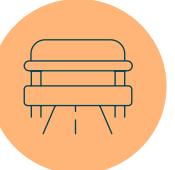



Property overview

1950 Franklin combines convenience with the energy of Oakland’s revitalized downtown core. This office building features efficient workspaces with easy access to public transportation, a variety of dining options, and the city’s thriving cultural scene. With its strategic position near major thoroughfares and close to Lake Merritt.



■ MOVE IN READY



- 
Planned renovated lobby
- 
Bart two blocks away
- 
Move in ready suites
- 
Access to 1900 broadway
- 
580/980 Highway nearby
- 
Parking garage
- 
Future events center



The 18th Floor



STAK

SITE

What is STAK? The ultimate amenity package, accessible through a single app.

Stay connected with over 45 high-end amenities crafted with impeccable finishes to ensure an experience unlike any other. Access your office space and exclusive amenities, and reserve meeting spaces or a car all in one app.



20K SF Deck with Spa,
Dining Areas & Grills



Penthouse
Media Center

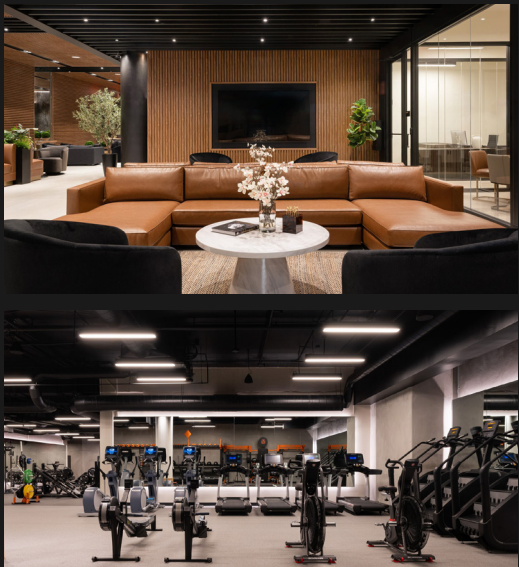


Car Lounge with access
to Car EV Fleet



Fitness Center

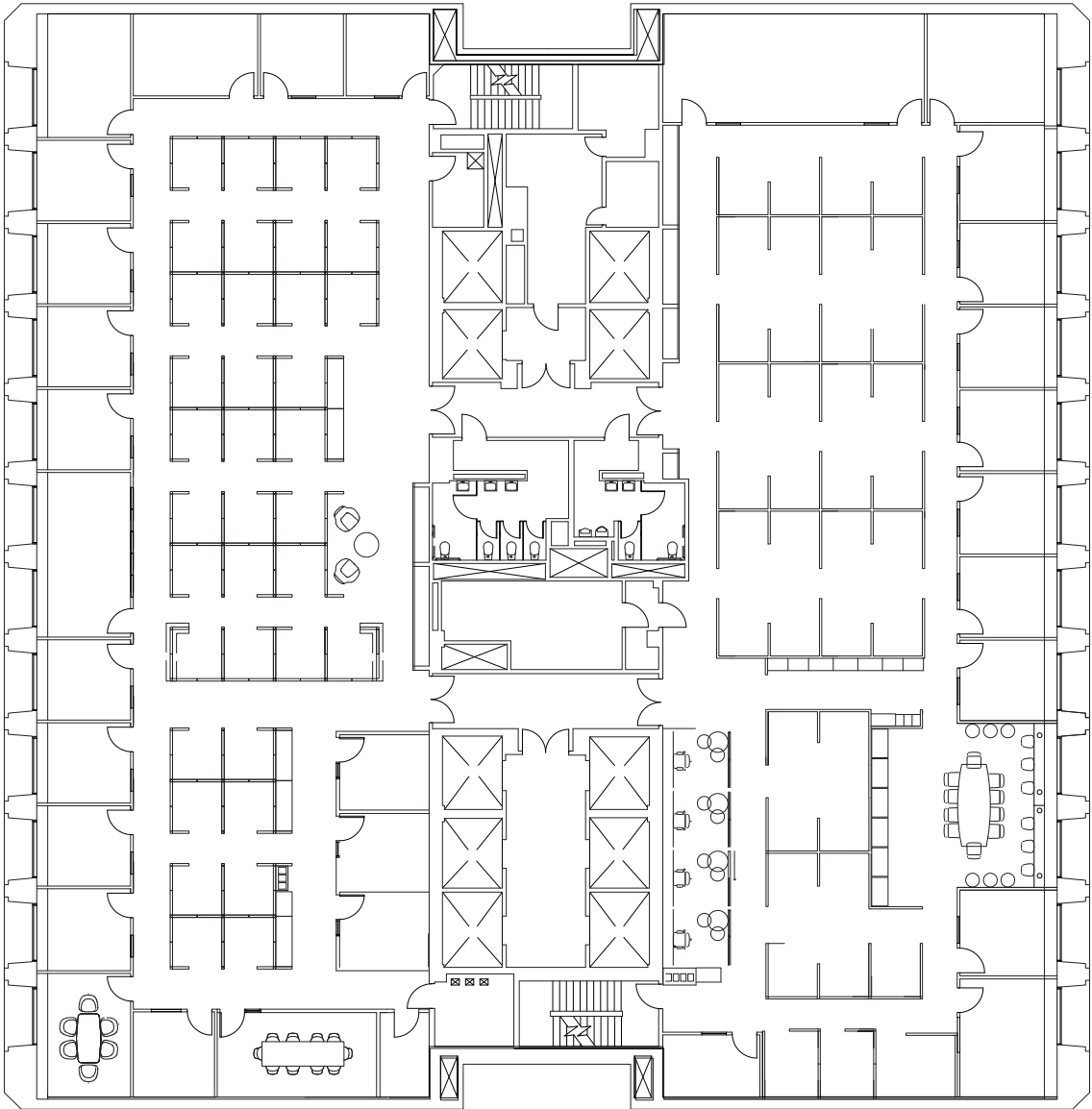
Spaces to collaborate, entertain and play – Event & Conferencing Spaces Coming Soon!



10TH FLOOR

Availability

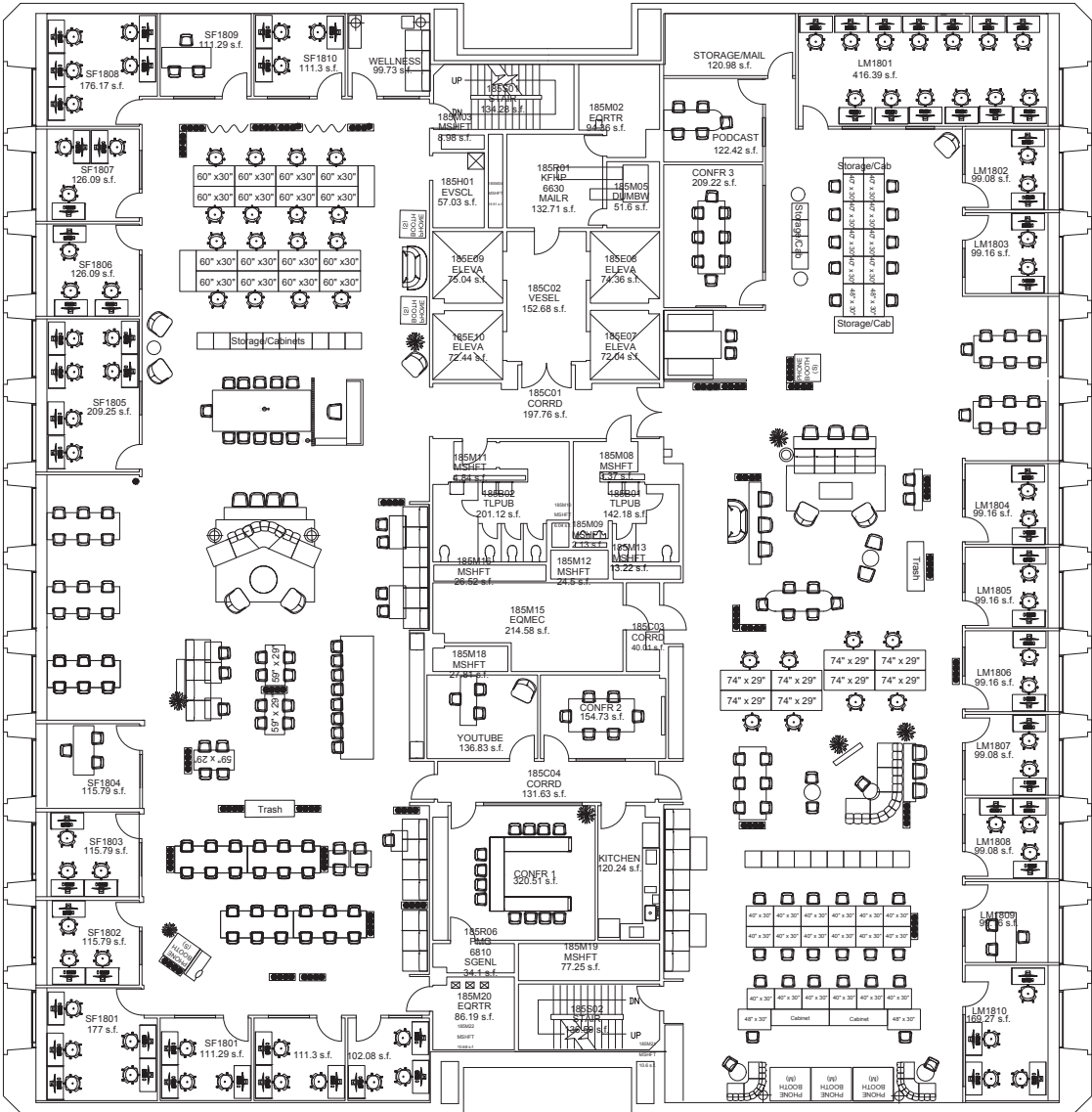
Move in ready suite



18TH FLOOR

Availability

Fully furnished co working suite



This architectural floor plan depicts a building with a central corridor system. The plan is oriented with a north arrow pointing towards the top-left corner. The central corridor runs vertically, with a staircase labeled 'UP' and 'DN' (Down) located near the top. The building is divided into several rooms, including a large central hall, a kitchen area with a stove and sink, a bathroom, and several smaller rooms. The rooms are labeled with numbers: 1, 2, 3, 4, 5, 6, 7, 8, 9, 10, 11, 12, 13, 14, 15, 16, 17, 18, 19, 20, 21, 22, 23, 24, 25, 26, 27, 28, 29, 30, 31, 32, 33, 34, 35, 36, 37, 38, 39, 40, 41, 42, 43, 44, 45, 46, 47, 48, 49, 50, 51, 52, 53, 54, 55, 56, 57, 58, 59, 60, 61, 62, 63, 64, 65, 66, 67, 68, 69, 70, 71, 72, 73, 74, 75, 76, 77, 78, 79, 80, 81, 82, 83, 84, 85, 86, 87, 88, 89, 90, 91, 92, 93, 94, 95, 96, 97, 98, 99, 100. The plan also shows various fixtures such as doors, windows, and furniture like tables and chairs. The overall layout is symmetrical, with rooms arranged around the central corridor.



Uptown Oakland is a vibrant neighborhood known for its arts and entertainment scene. It has seen significant urban renewal, attracting diverse restaurants, bars, and cultural venues. The historic Fox Theater, a restored 1920s movie palace, hosts live music performances in an area that features Art Deco architecture, street art, and modern developments.



SAM SWAN
MANAGING DIRECTOR

+ 1 510 388 6400
sam.swan@jll.com
CA licence: #00992868

COLIN BEHRING
CEO, BEHRING COMPANIES

+1 925 575 9619
cbehring@behringco.com

Although information has been obtained from sources deemed reliable, neither Owner nor JLL makes any guarantees, warranties or representations, express or implied, as to the completeness or accuracy as to the information contained herein. Any projections, opinions, assumptions or estimates used are for example only. There may be differences between projected and actual results, and those differences may be material. The Property may be withdrawn without notice. Neither Owner nor JLL accepts any liability for any loss or damage suffered by any party resulting from reliance on this information. If the recipient of this information has signed a confidentiality agreement regarding this matter, this information is subject to the terms of that agreement. ©2024. Jones Lang LaSalle IP, Inc. All rights reserved.