

ONE UTAH CENTER

FOR SUBLEASE

201 South Main Street | 6th Floor
Salt Lake City, Utah



PROPERTY INFORMATION

- 6th Floor Available
- Unparalleled 360° Views
- Law office buildout
- Up to 17,793 RSF
- Sublease Rate \$24.50 RSF/ FS
- Sublease term through May 2021
- Adjacent to Trax
- On Site Parking
 - 3/1000 Covered
 - \$79.00/MO/Stall



**COLDWELL
BANKER
COMMERCIAL**

ADVISORS

David Muir
801.947.8373
david.muir@cbcadvisors.com

Peggy Garcia
801.947.8354
peggy.garcia@cbcadvisors.com

Monica Rafferty, CCIM
801.947.8397
monica.rafferty@cbcadvisors.com



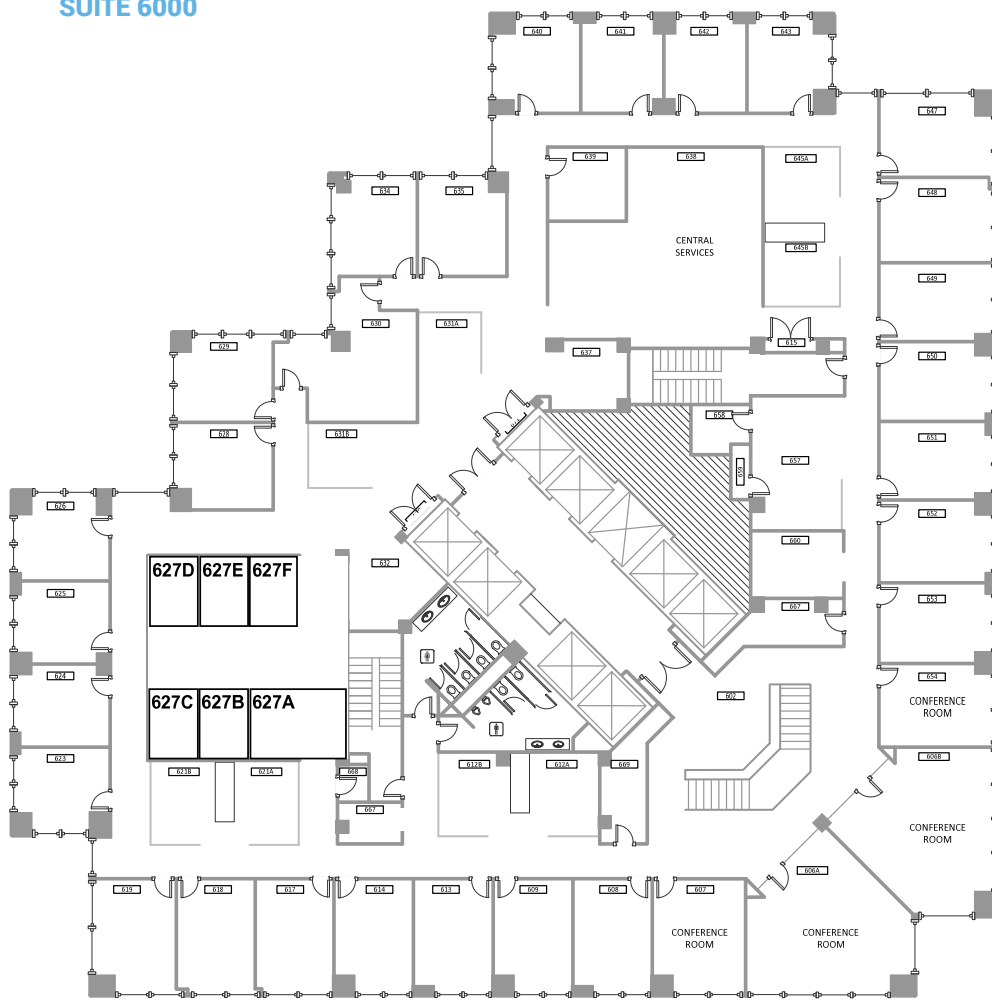
ONE UTAH CENTER

David Muir
801.947.8373
david.muir@cbcadvisors.com

Peggy Garcia
801.947.8354
peggy.garcia@cbcadvisors.com

Monica Rafferty, CCIM
801.947.8397
monica.rafferty@cbcadvisors.com

SUITE 6000



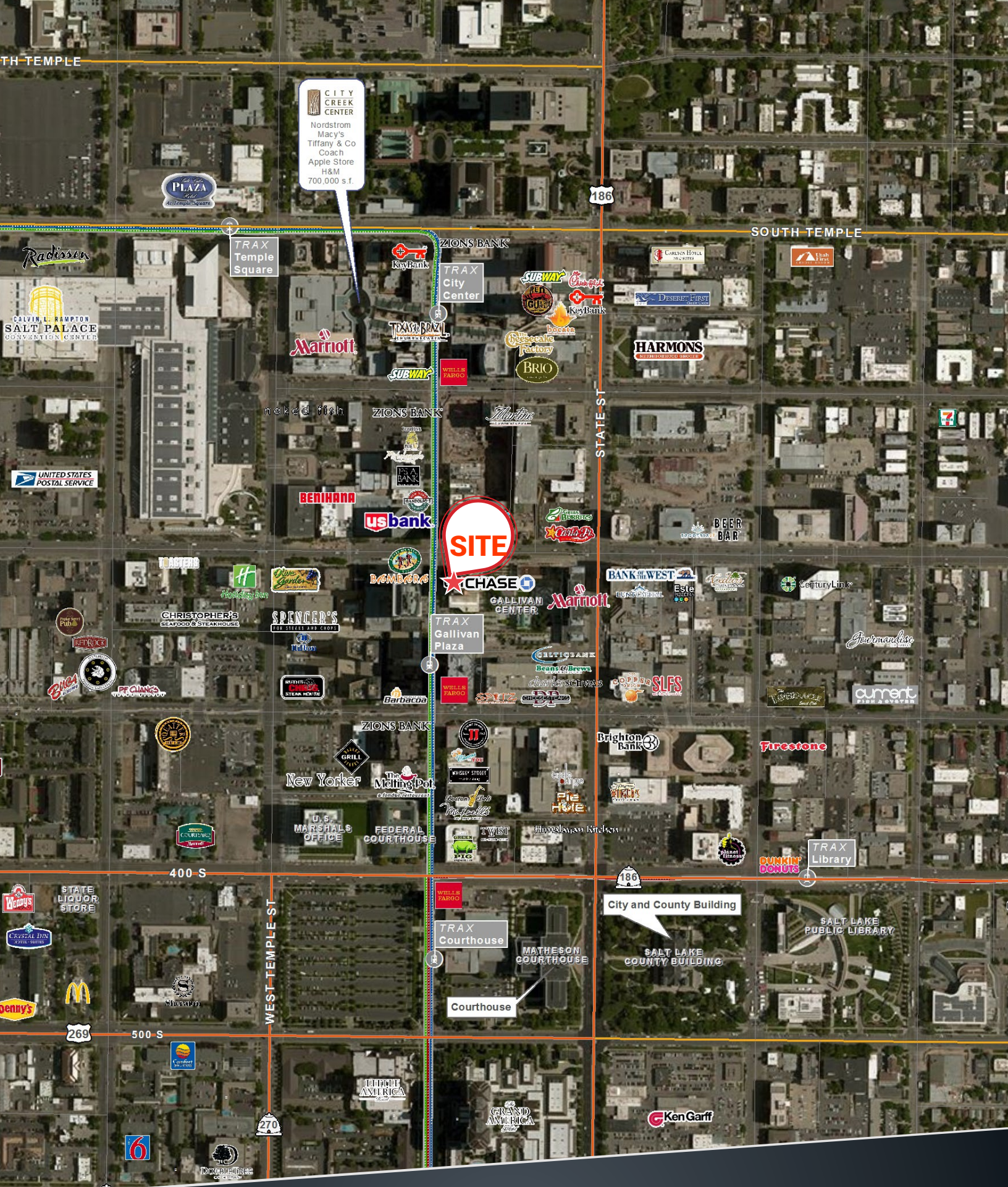
6550 SOUTH MILLROCK DRIVE, SUITE 200
SALT LAKE CITY, UTAH
(P) 801.947.8300

Marketed exclusively by



This statement with the information it contains is given with the understanding that negotiations relating to the purchase, renting or leasing of this property shall be conducted through this office. The information while not guaranteed has been secured from sources we believe to be reliable however, it is up to the buyer or tenant to verify the information and conduct appropriate due diligence. Coldwell Banker Commercial and its Logo are registered service marks owned by Coldwell Banker Real Estate, LLC. Each Office is Independently Owned and Operated. All Rights Reserved. © 2017

TH TEMPLE



CITY CREEK CENTER
Nordstrom
Macy's
Tiffany & Co
Coach
Apple Store
H&M
700,000 s.f.

PLAZA

TRAX Temple Square

186

SOUTH TEMPLE

STATE ST

SITE

TRAX Gallowan Plaza

400 S

WEST TEMPLE ST

186

City and County Building

TRAX Courthouse

MATHESON COURTHOUSE

Courthouse

SALT LAKE COUNTY BUILDING

SALT LAKE PUBLIC LIBRARY

500 S

269

6

270

Ken Garff

ONE UTAH CENTER

6550 SOUTH MILLROCK DRIVE, SUITE 200
SALT LAKE CITY, UTAH
(P) 801.947.8300



COLDWELL BANKER COMMERCIAL
ADVISORS