



Accelerating success.



FOR SALE

Asking Price:

\$69,900

Contact us:

Greg Joslin, CCIM, SIOR
+1 501 978 6581
greg.joslin@colliers.com

1 Allied Drive, Suite 1500,
Little Rock, AR 72202
P: +1 501 372 6161
colliers.com/arkansas

500 W Columbia Street,
Magnolia, AR 71753

For Sale: Warehouse/Flex Building

Building Information

- **Reduced sale price: \$69,900**
- Building size: +/- 10,640 SF
- Lot size: +/- 1.05 acres
- Approximately 1,033 SF of office space
- 5-ton and 2-ton overhead cranes

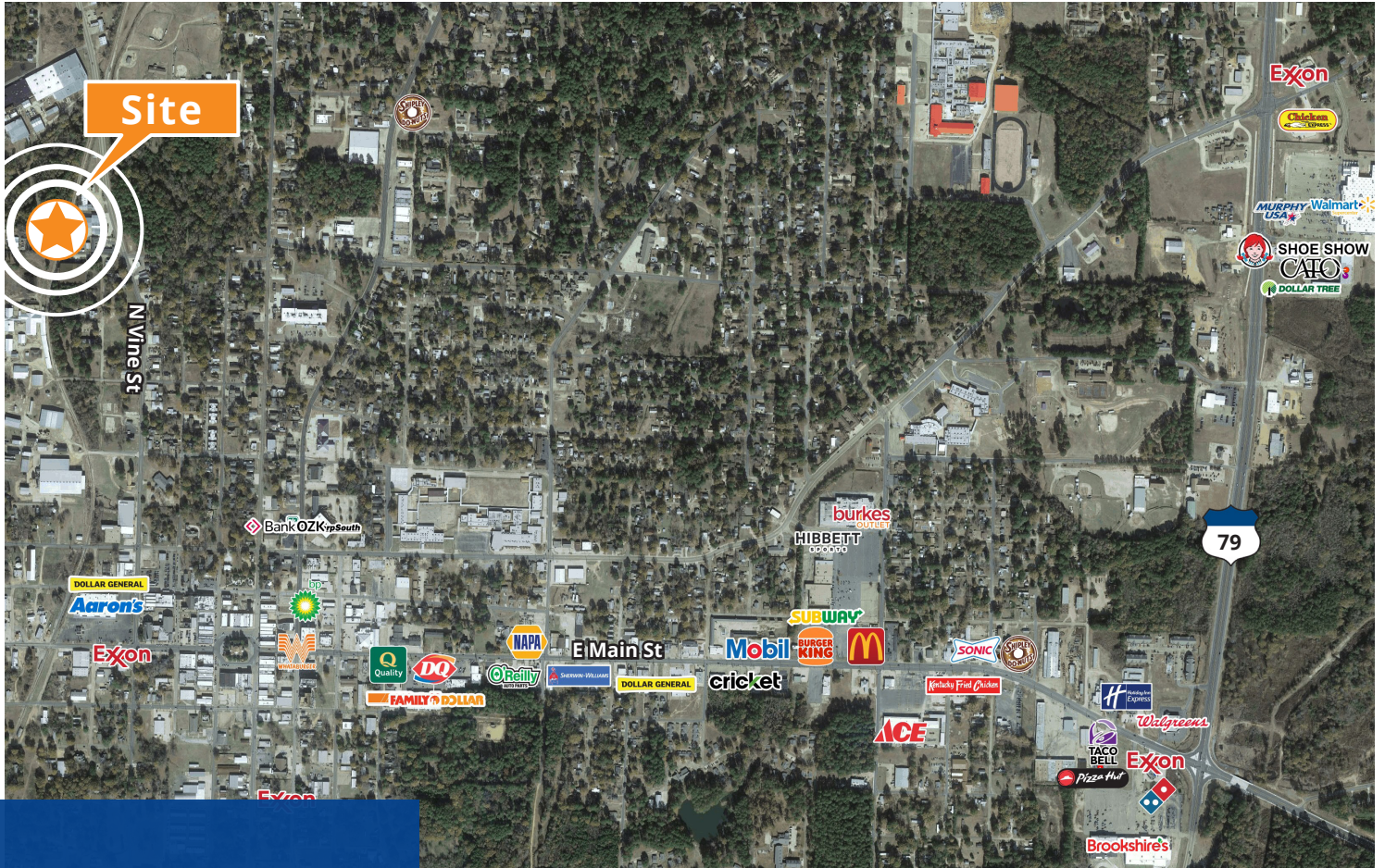
Copyright © 2024 Colliers International.

Information herein has been obtained from sources deemed reliable, however its accuracy cannot be guaranteed. The user is required to conduct their own due diligence and verification.

Interior Photos



Neighborhood Map



Contact us:

Greg Joslin, CCIM, SIOR

+1 501 978 6581

greg.joslin@colliers.com

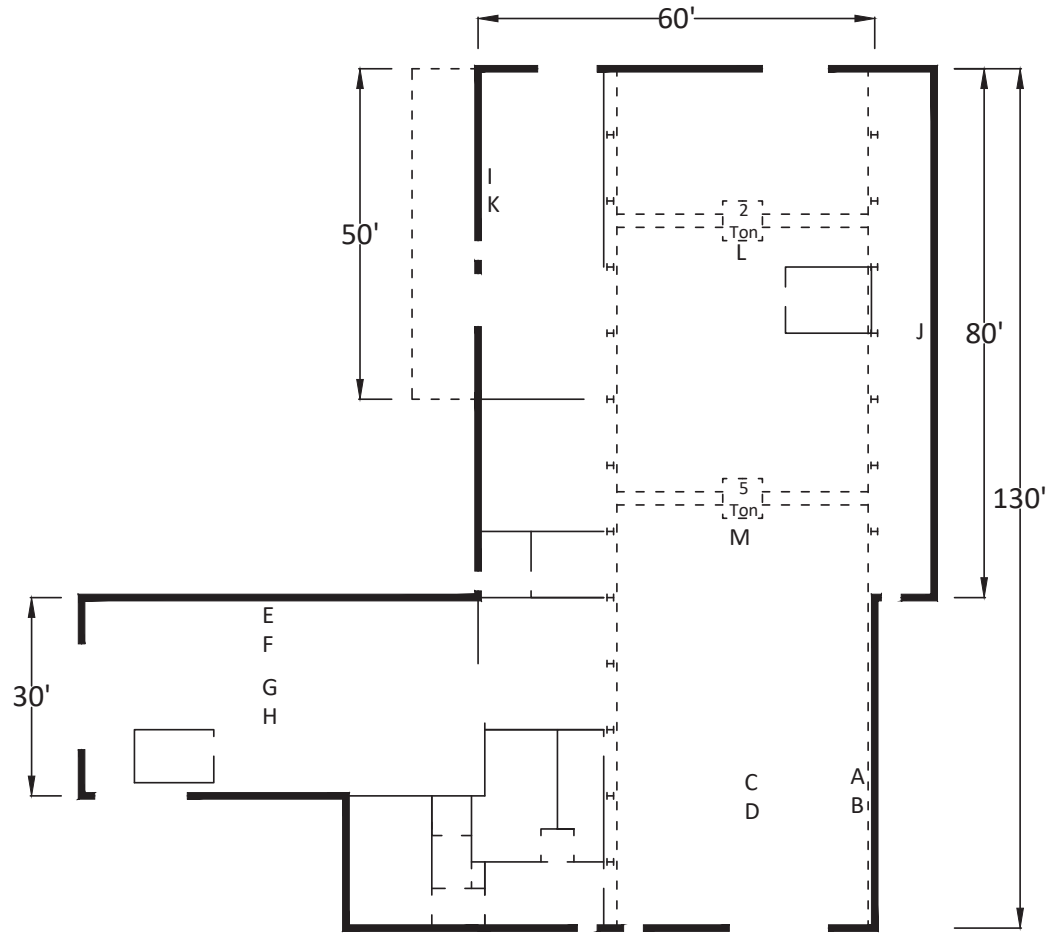
1 Allied Drive, Suite 1500,
Little Rock, AR 72202
P: +1 501 372 6161
colliers.com/arkansas



Copyright © 2021 Colliers International.

Information herein has been obtained from sources deemed reliable, however its accuracy cannot be guaranteed. The user is required to conduct their own due diligence and verification.

Floor plan



- A 17'6" under beam
- B 19'6" between beams
- C 18'11" under beam
- D 25'5" between beams
- E 13'9" under beam
- F 16' between beams
- G 15'6" under beam
- H 22'5" between beams
- I 7'1" under beam
- J 8'7" between beams
- K 12'11" between beams
- L 12'6" under hook est.
- M 11' under hook est.

