

FOR LEASE

BALTIMORE COUNTY, MD

3100-3102 LORD BALTIMORE DR

EXECUTIVE PARK WEST | 3100-3300 LORD BALTIMORE DRIVE | WINDSOR MILL, MD 21244



PROPERTY HIGHLIGHTS:

- ▶ NEW FITNESS CENTER AND CONFERENCE ROOM
- ▶ TWELVE BUILDINGS CONSISTING OF 450,000 SF IN A GATED 30-ACRE BUSINESS PARK
- ▶ ON-SITE DAYCARE AND RESTAURANT
- ▶ WITHIN 3 MILES OF SOCIAL SECURITY ADMINISTRATION HEADQUARTERS AND CENTERS FOR MEDICARE AND MEDICAID SERVICES
- ▶ WITHIN 2 MILES OF BELTWAY EXIT 17 AT SECURITY BOULEVARD AND 1 MILE OF BELTWAY EXIT 18 AT LIBERTY ROAD

DAVID S. BROWN
ENTERPRISES, LTD.

KEVIN KEANE | SVP, OFFICE LEASING
410.581.2519 | KEVIN@DAVIDSBROWN.COM

BRENT MANGUM | VP, OFFICE LEASING
410.581.2518 | BRENT@DAVIDSBROWN.COM

RYAN BARRETT | LEASING ASSOCIATE
410.581.2521 | RBARRETT@DAVIDSBROWN.COM

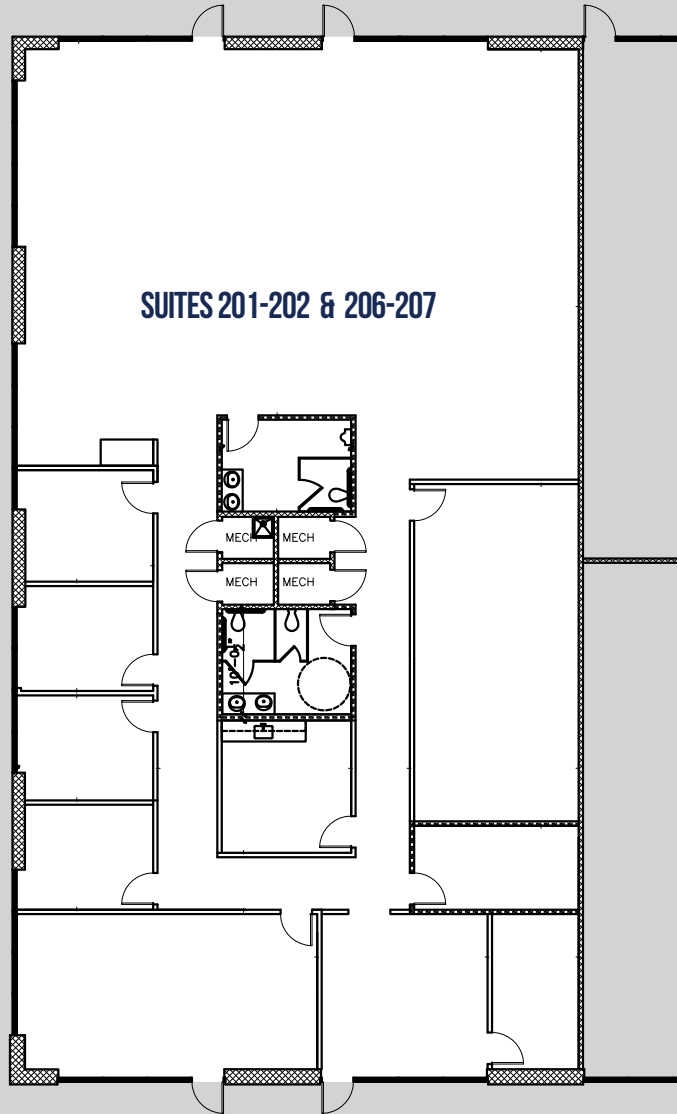
DAVID S. BROWN ENTERPRISES | 100 PAINTERS MILL ROAD, OWINGS MILLS, MD 21117 | 410.581.2520 | WWW.DAVIDSBROWN.COM |    

FOR LEASE

BALTIMORE COUNTY, MD

3100 LORD BALTIMORE DR

EXECUTIVE PARK WEST | 3100-3300 LORD BALTIMORE DRIVE | WINDSOR MILL, MD 21244



AVAILABLE

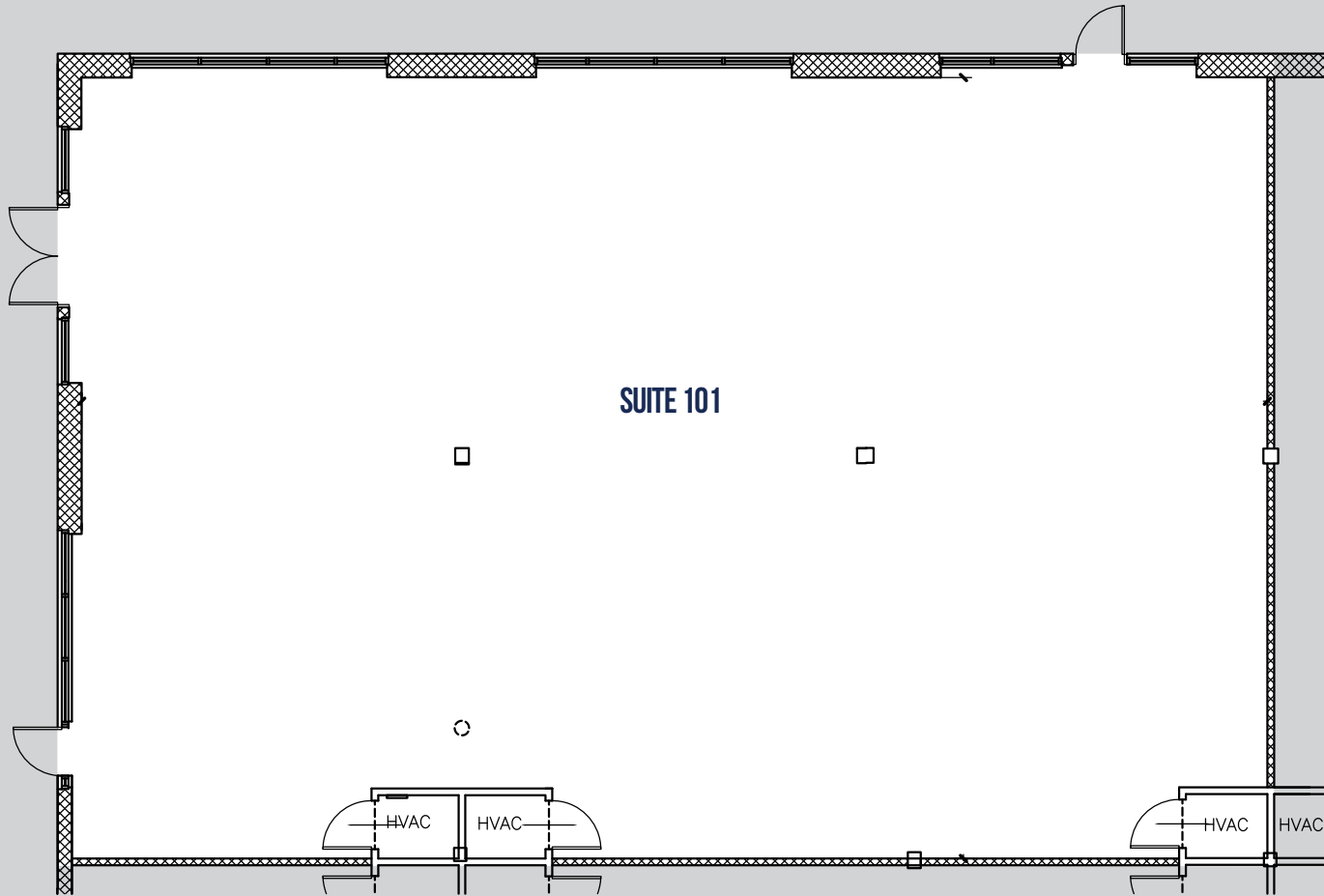
► SUITES 201-202 & 206-207: 5,390 SF

FOR LEASE

BALTIMORE COUNTY, MD

3102 LORD BALTIMORE DR

EXECUTIVE PARK WEST | 3100-3300 LORD BALTIMORE DRIVE | WINDSOR MILL, MD 21244



AVAILABLE

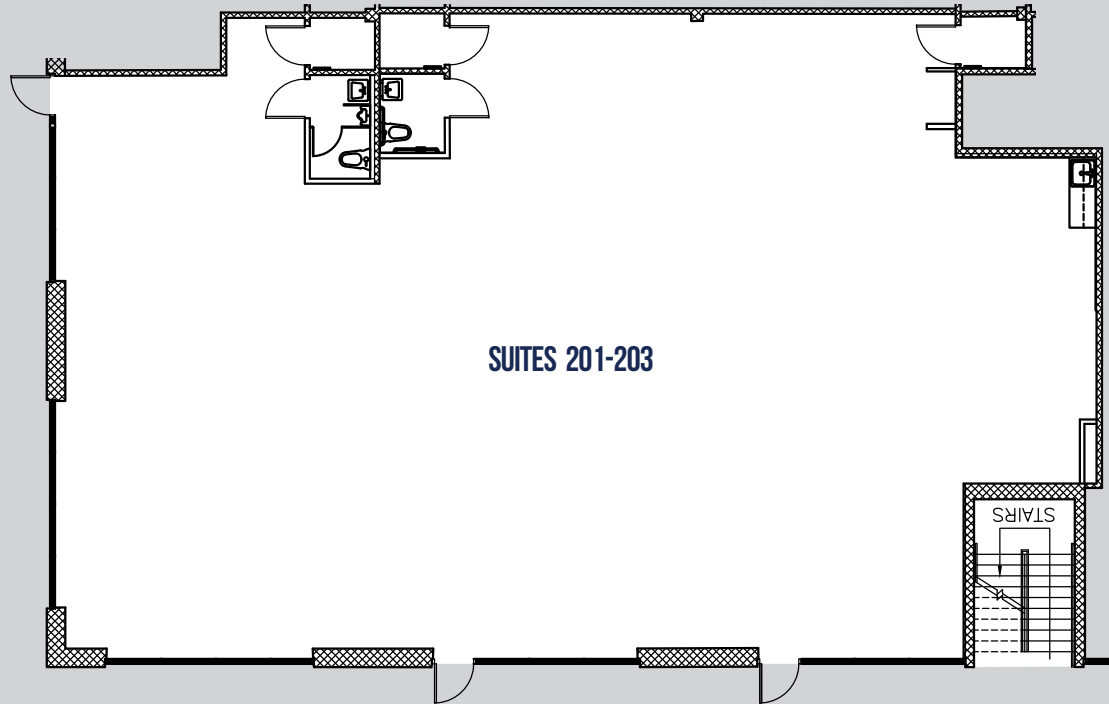
▶ SUITE 101: 3,746 SF

FOR LEASE

BALTIMORE COUNTY, MD

3102 LORD BALTIMORE DR

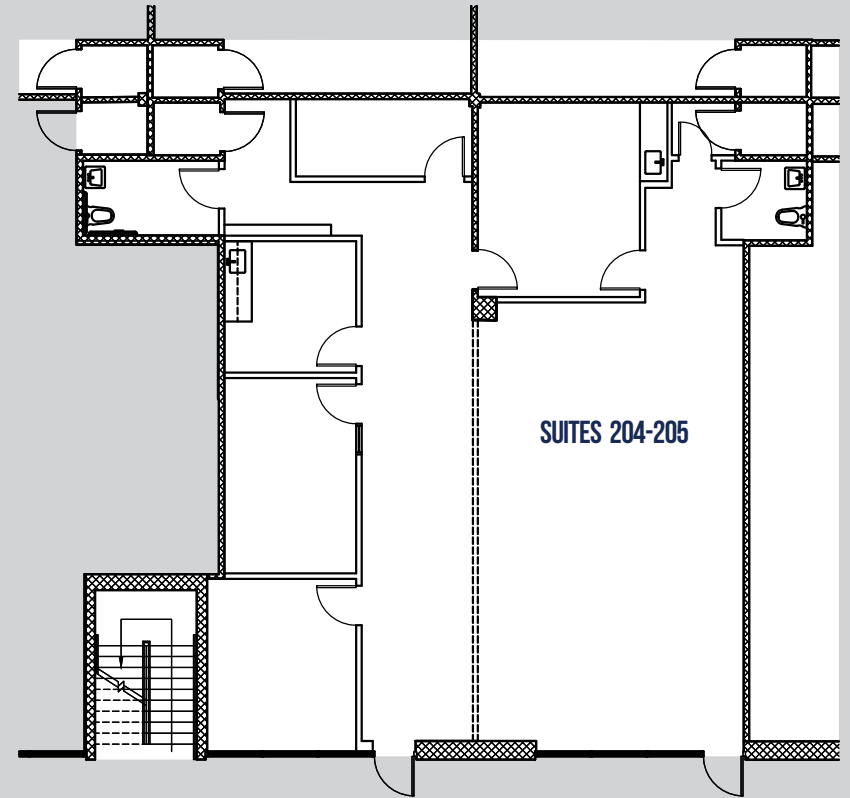
EXECUTIVE PARK WEST | 3100-3300 LORD BALTIMORE DRIVE | WINDSOR MILL, MD 21244



SUITES 201-203

AVAILABLE

- ▶ SUITES 201-203: 3,816 SF
- ▶ SUITES 204-205: 2,164 SF



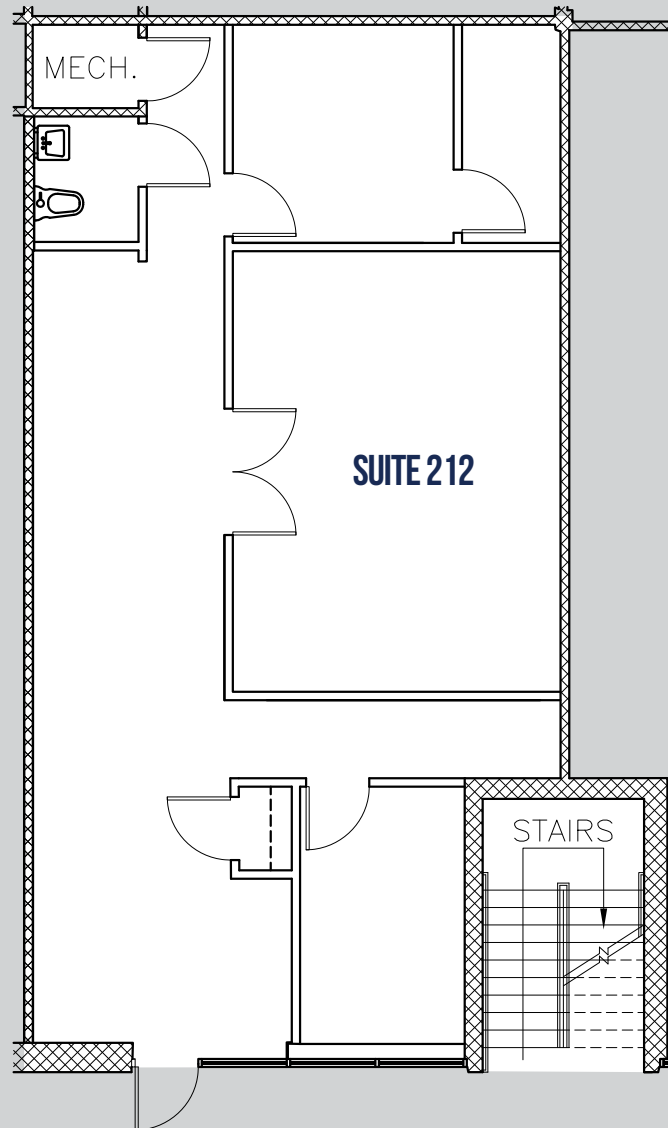
SUITES 204-205

FOR LEASE

B BALTIMORE COUNTY, MD

3102 LORD BALTIMORE DR

EXECUTIVE PARK WEST | 3100-3300 LORD BALTIMORE DRIVE | WINDSOR MILL, MD 21244



.....
AVAILABLE

▶ SUITE 212: 1,221 SF

.....

B DAVID S. BROWN
ENTERPRISES, L.T.D.

KEVIN KEANE | SVP, OFFICE LEASING

410.581.2519 | KEVIN@DAVIDSBROWN.COM

BRENT MANGUM | VP, OFFICE LEASING

410.581.2518 | BRENT@DAVIDSBROWN.COM

RYAN BARRETT | LEASING ASSOCIATE

410.581.2521 | RBARRETT@DAVIDSBROWN.COM

DAVID S. BROWN ENTERPRISES | 100 PAINTERS MILL ROAD, OWINGS MILLS, MD 21117 | 410.581.2520 | WWW.DAVIDSBROWN.COM |    

3100-3102 LORD BALTIMORE DR

EXECUTIVE PARK WEST | 3100-3300 LORD BALTIMORE DRIVE | WINDSOR MILL, MD 21244

MAP



DISTANCE TO:

- CMS: 2 Miles
- SSA: 3 Miles
- BWI: 15 Miles
- I-695 & I-70 Interchange: 3 Miles