



Specifications

±0.78 Acres (Vacant Land)
LOT SIZE

Block 567, Lot 1.06
LEGAL DESCRIPTION

250' x 100'
DIMENSIONS

Sonic, Wawa, Hess Station, Subway,
Auto Zone, McDonald's Nearby
Walking Distance to Bus Stop
No Fast Food, Fuel, Auto Parts
Stores and No Parking of Any
Type of Vehicles Allowed

COMMENTS

\$18,508.88
TAXES (2025)

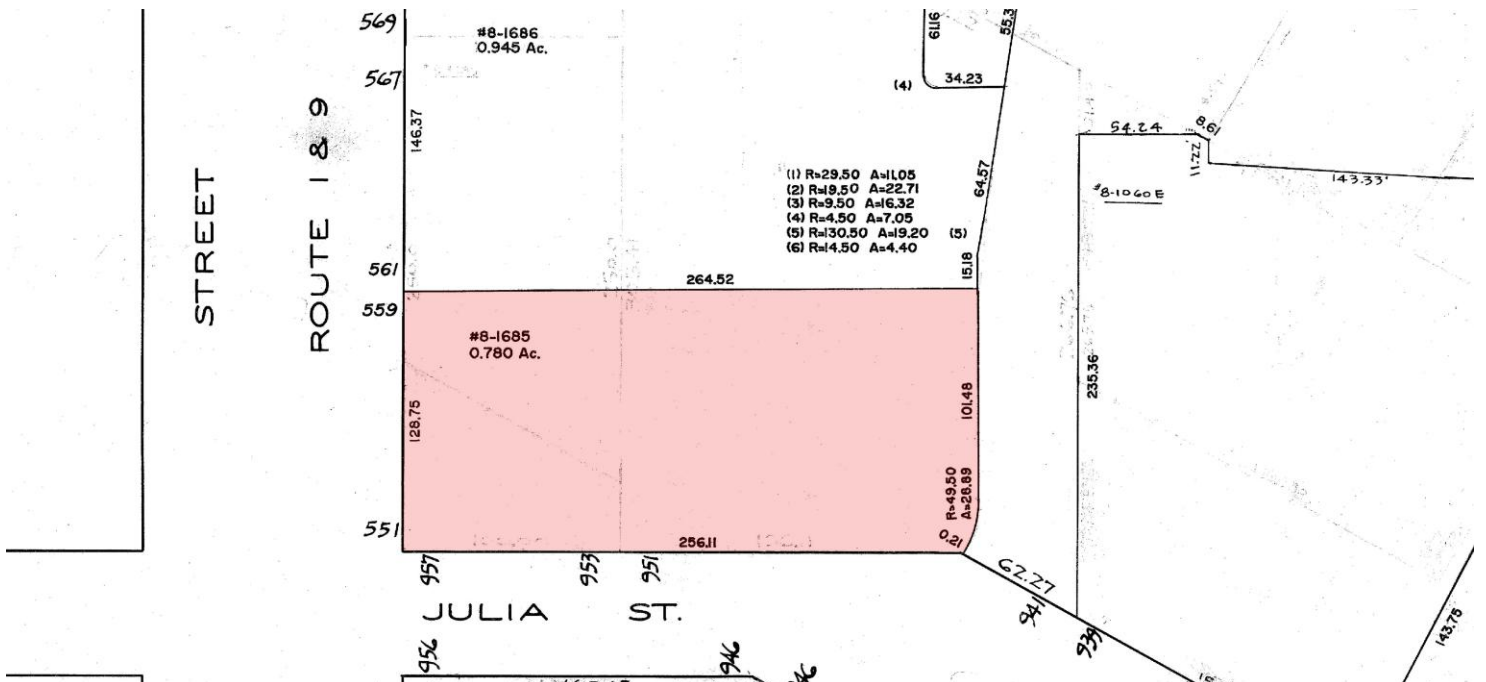
\$29,000 Per Month NNN
GROUND LEASE RATE

For additional property information or to arrange an inspection, please contact the exclusive brokers:

Jason M. Crimmins, CCIM, SIOR
Chief Executive Officer
973.379.6644 x 122
jmcrimmins@blauberg.com

Alessandro (Alex) Conte, CCIM, SIOR
President
973.379.6644 x 131
aconte@blauberg.com

Peter J. Murano, Jr., SIOR
Managing Executive Director
973.379.6644 x 114
pjmurano@blauberg.com



Peter J. Murano, Jr., SIOR
Managing Executive Director
 973.379.6644 x 114
 pjmurano@blauberg.com



5 MILES

- Total Population: 681,016
- Households: 244,062
- Median Household Income: \$75,861
- Average Household Size: 2.7
- Transportation to Work: 343,126
- Labor Force: 541,941

10 MILES

- Total Population: 2.35M
- Households: 888,138
- Median Household Income: \$100,535
- Average Household Size: 2.6
- Transportation to Work: 1.22M
- Labor Force: 1.89M

15 MILES

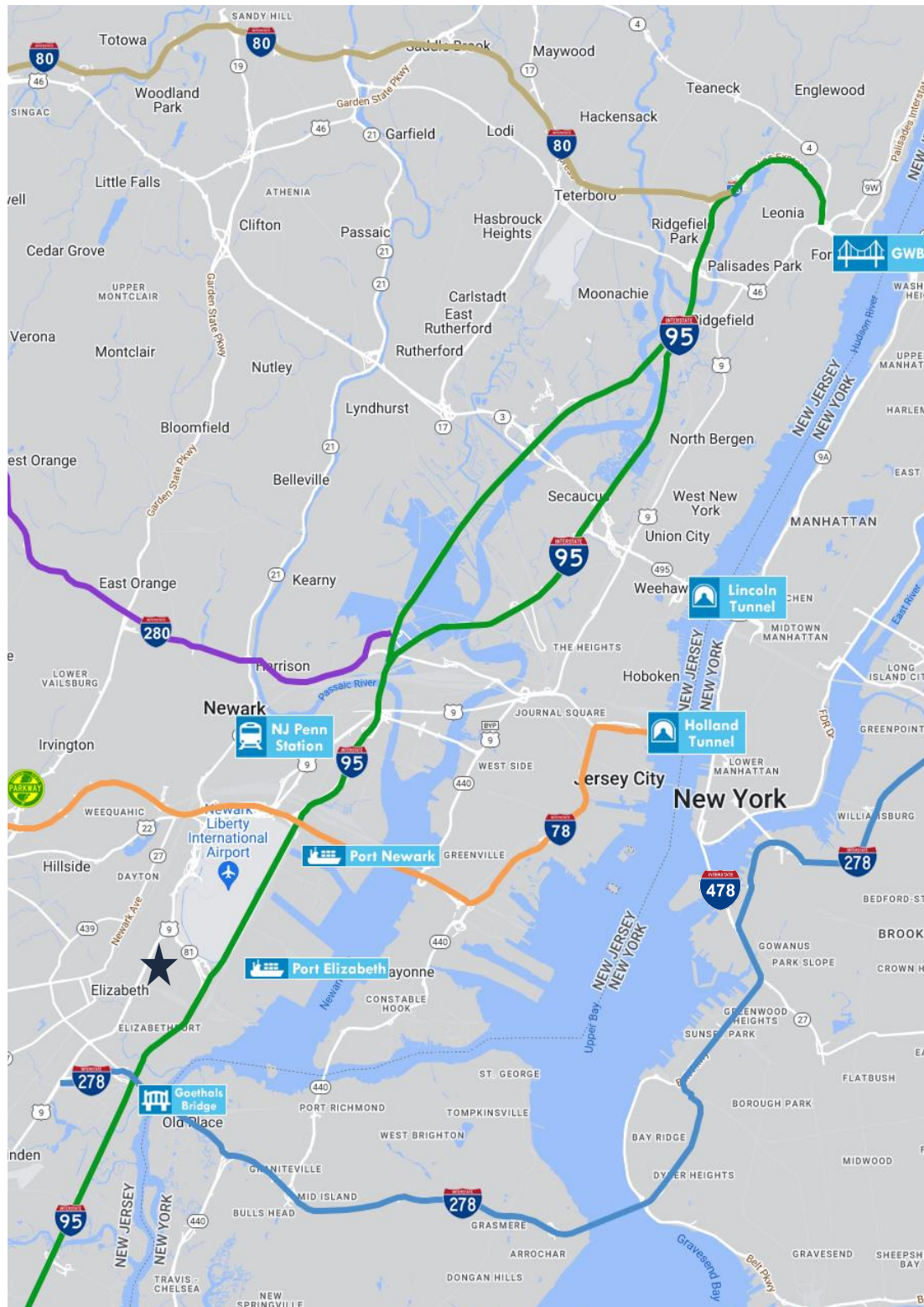
- Total Population: 6.6M
- Households: 2.68M
- Median Household Income: \$110,216
- Average Household Size: 2.4
- Transportation to Work: 3.53M
- Labor Force: 5.41M

For additional property information or to arrange an inspection, please contact the exclusive brokers:

Jason M. Crimmins, CCIM, SIOR
Chief Executive Officer
973.379.6644 x 122
jmcrimmins@blauberg.com

Alessandro (Alex) Conte, CCIM, SIOR
President
973.379.6644 x 131
aconte@blauberg.com

Peter J. Murano, Jr., SIOR
Managing Executive Director
973.379.6644 x 114
pjmurano@blauberg.com



ACCESSIBILITY



0.3 MI
US Hwy 1 & 9



1.3 MI
I-95 Exit 13A



1.5 MI
Newark Airport



2.7 MI
I-278



2.9 MI
I-78



3.5 MI
Goethals Bridge



5.1 MI
Penn Station



5.9 MI
Ports Newark & Elizabeth



10.9 MI
Holland Tunnel



14.6 MI
Lincoln Tunnel

For additional property information or to arrange an inspection, please contact the exclusive brokers:

Jason M. Crimmins, CCIM, SIOR
Chief Executive Officer
973.379.6644 x 122
jmcrimmins@blauberg.com

Alessandro (Alex) Conte, CCIM, SIOR
President
973.379.6644 x 131
aconte@blauberg.com

Peter J. Murano, Jr., SIOR
Managing Executive Director
973.379.6644 x 114
pjmurano@blauberg.com