

Specifications

±65,000 SF on ±3 AC
AVAILABLE SPACE

±3,000 SF
OFFICE SPACE

20' Clear
CEILING HEIGHT

4
LOADING DOCKS

2
DRIVE-INS

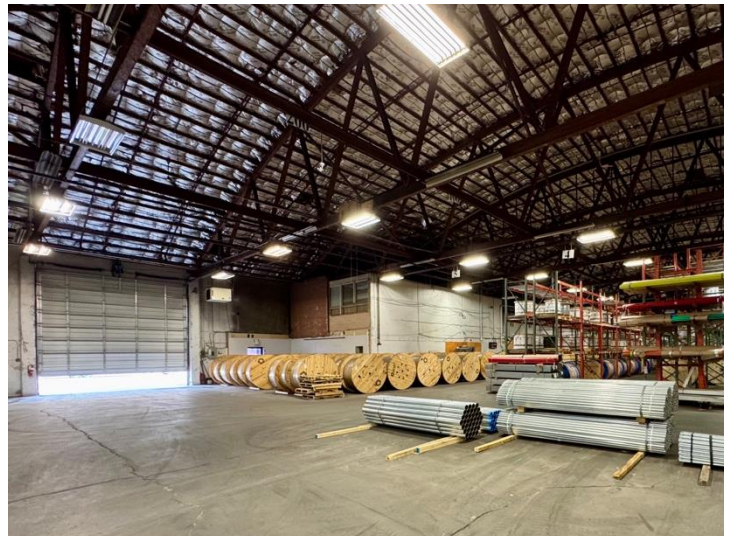
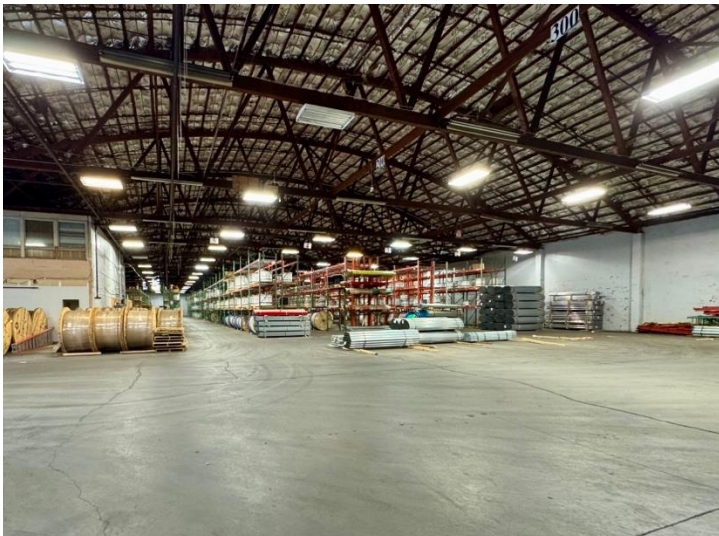
M-2
ZONING

\$16 PSF NNN
LEASE

0.7 Miles to Route 3
1.9 Miles to GSP Exit 151
2.9 Miles to Route 46
ACCESSIBILITY

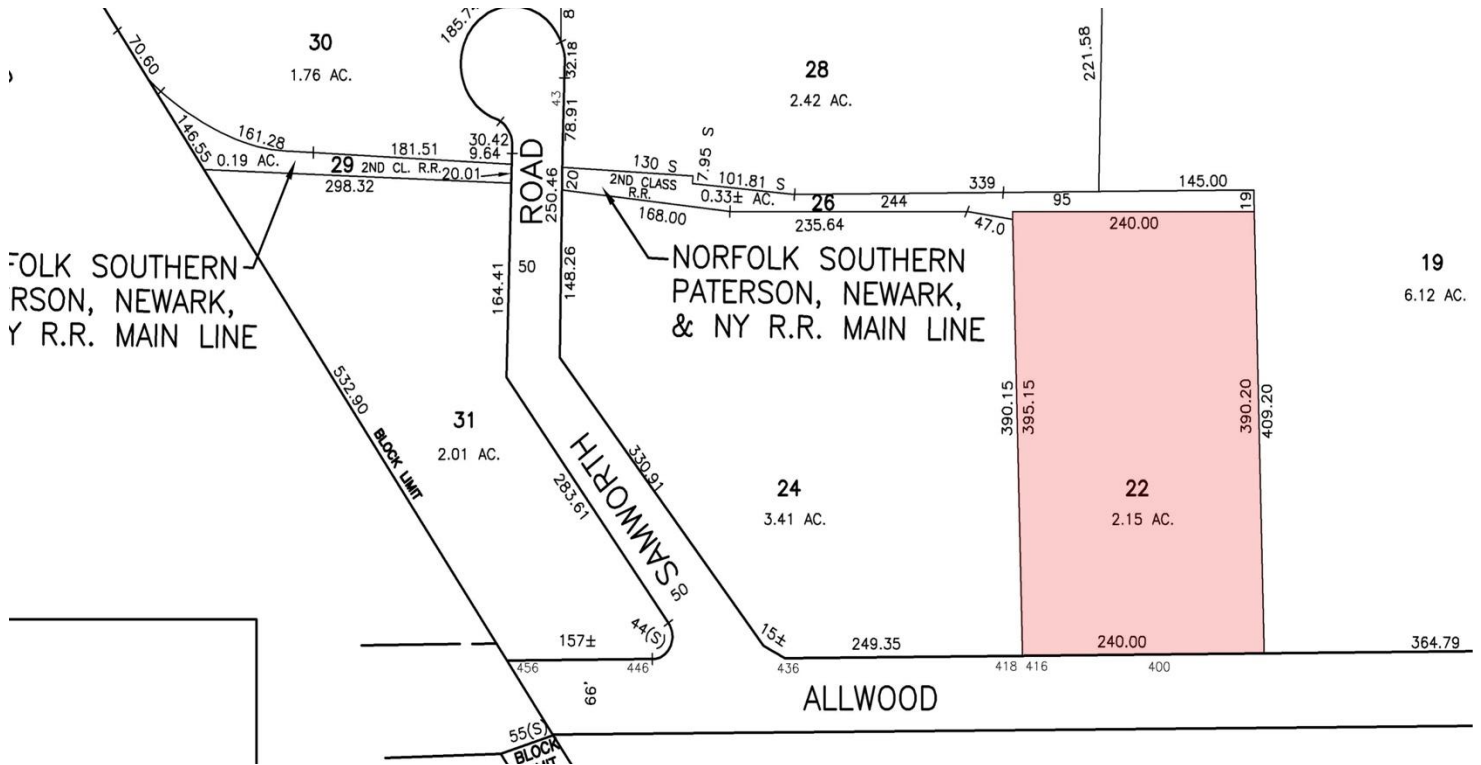
For additional property information or to arrange an inspection, please contact the exclusive brokers:

Jason M. Crimmins, CCIM, SIOR, *President*, 973.379.6644 x 122, jmcrimmins@blauberg.com
Alessandro (Alex) Conte, CCIM, SIOR, *Executive Vice President*, 973.379.6644 x 131, aconte@blauberg.com
Peter J. Murano, Jr., *Managing Executive Director*, 973.379.6644 x 114, pjmurano@blauberg.com
Troy Schaafsma, *Director*, 973.379.6644 x 116, troys@blauberg.com



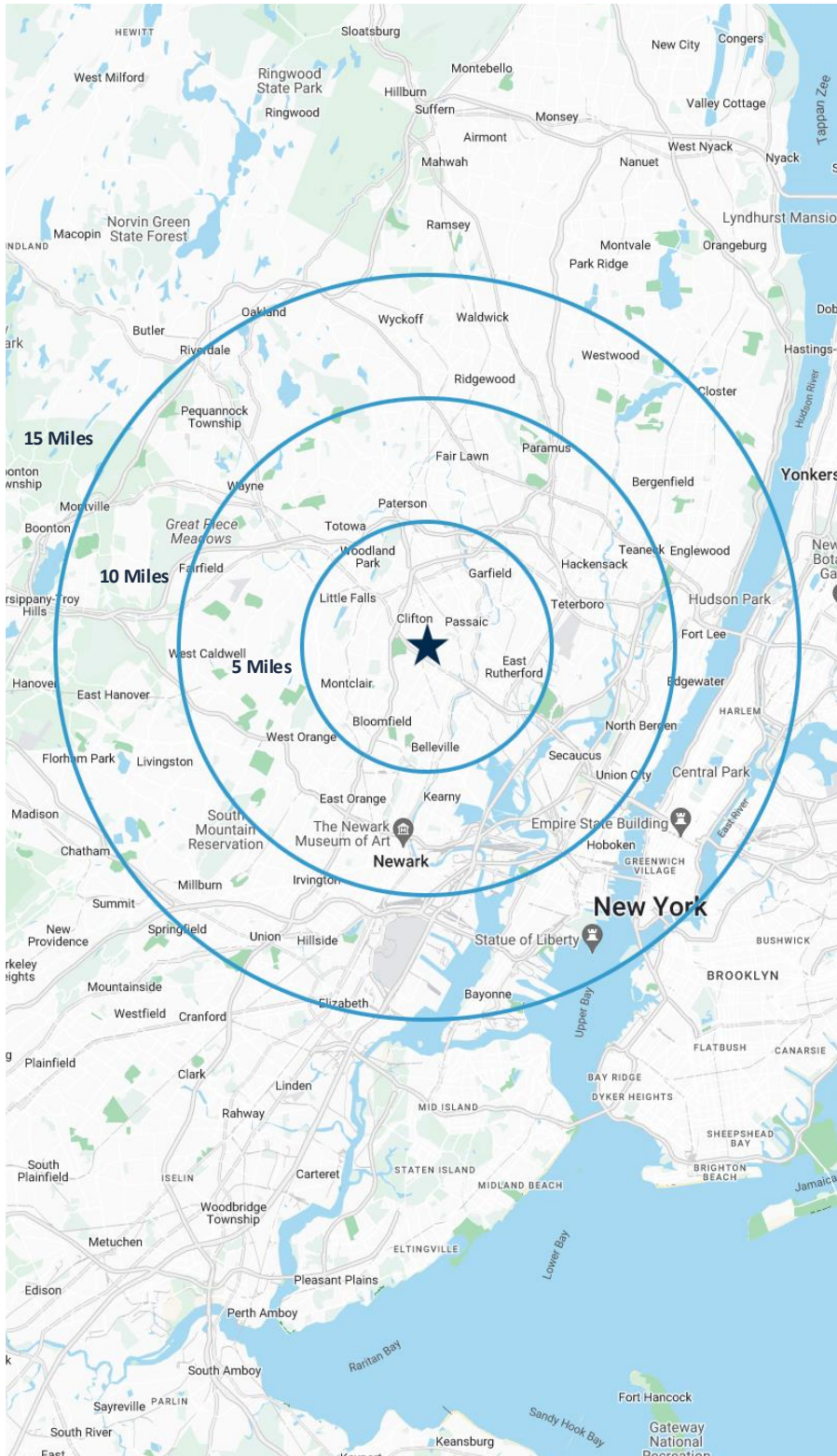
For additional property information or to arrange an inspection, please contact the exclusive brokers:

Jason M. Crimmins, CCIM, SIOR, *President*, 973.379.6644 x 122, jmcrimmins@blauberg.com
Alessandro (Alex) Conte, CCIM, SIOR, *Executive Vice President*, 973.379.6644 x 131, aconte@blauberg.com
Peter J. Murano, Jr., *Managing Executive Director*, 973.379.6644 x 114, pjmurano@blauberg.com
Troy Schaafsma, *Director*, 973.379.6644 x 116, troys@blauberg.com



For additional property information or to arrange an inspection, please contact the exclusive brokers:

Jason M. Crimmins, CCIM, SIOR, *President*, 973.379.6644 x 122, jmcrimmins@blauberg.com
 Alessandro (Alex) Conte, CCIM, SIOR, *Executive Vice President*, 973.379.6644 x 131, aconte@blauberg.com
 Peter J. Murano, Jr., *Managing Executive Director*, 973.379.6644 x 114, pjmurano@blauberg.com
 Troy Schaafsma, *Director*, 973.379.6644 x 116, troys@blauberg.com



5 MILES

- Total Population: 645,830
- Households: 238,787
- Median Household Income: \$104,216
- Average Household Size: 2.7
- Transportation to Work: 345,802
- Labor Force: 520,219

10 MILES

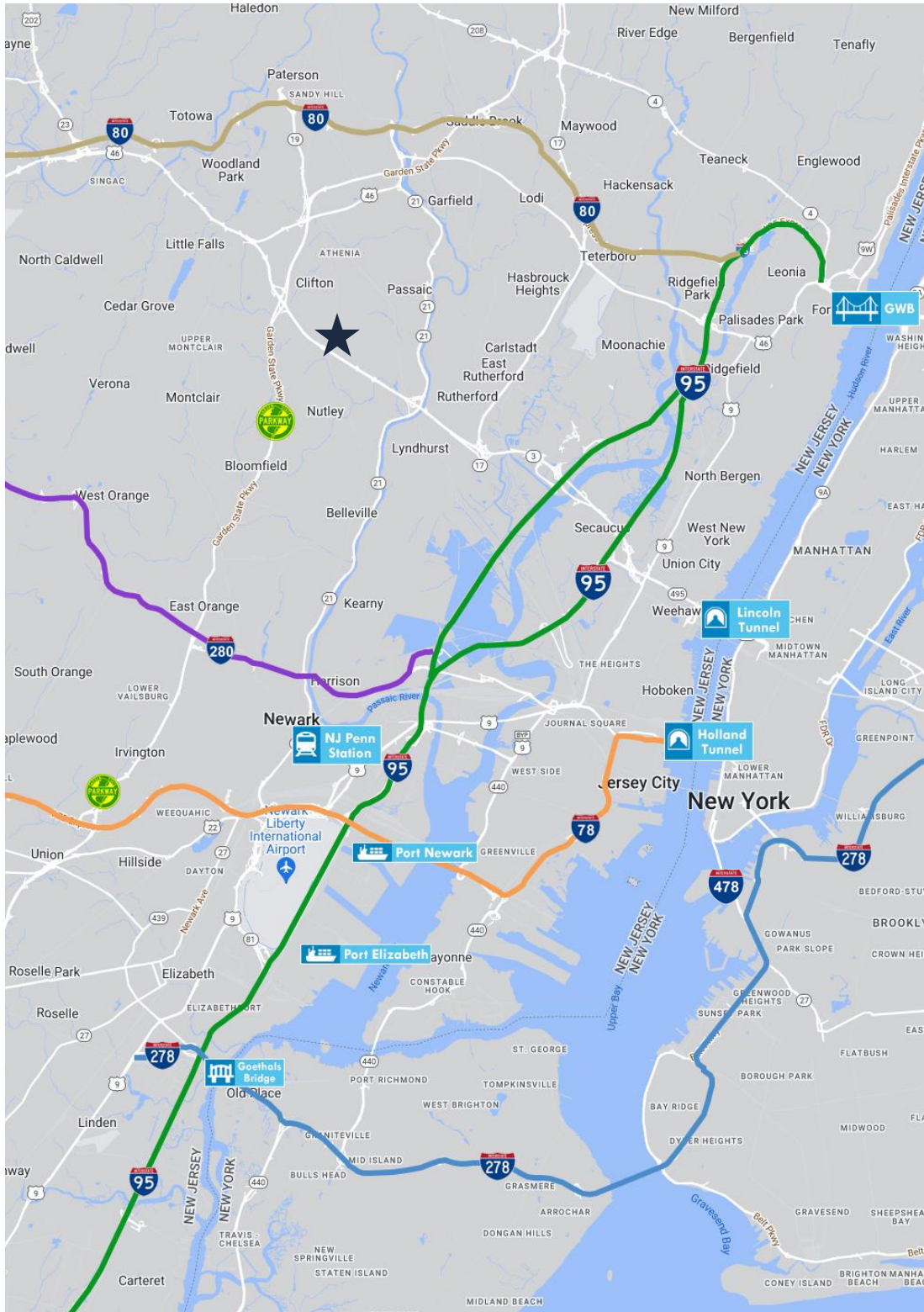
- Total Population: 2.47M
- Households: 940,185
- Median Household Income: \$102,811
- Average Household Size: 2.6
- Transportation to Work: 1.31M
- Labor Force: 2.0M

15 MILES

- Total Population: 6.84M
- Households: 2.82M
- Median Household Income: \$107,744
- Average Household Size: 2.4
- Transportation to Work: 3.65M
- Labor Force: 5.64M

For additional property information or to arrange an inspection, please contact the exclusive brokers:

Jason M. Crimmins, CCIM, SIOR, *President*, 973.379.6644 x 122, jmcrimmins@blauberg.com
Alessandro (Alex) Conte, CCIM, SIOR, *Executive Vice President*, 973.379.6644 x 131, aconte@blauberg.com
Peter J. Murano, Jr., *Managing Executive Director*, 973.379.6644 x 114, pjmurano@blauberg.com
Troy Schaafsma, *Director*, 973.379.6644 x 116, troys@blauberg.com



ACCESSIBILITY



0.7 MI
Route 3



1.9 MI
GSP Exit 151



2.9 MI
Route 46



5.4 MI
I-95 Exit 16



6.5 MI
I-80 Exit 53



7.8 MI
I-280 Exit 12



9.6 MI
Lincoln Tunnel



11.0 MI
I-78 Exit 52



13.9 MI
GWB



15.8 MI
Newark Airport

For additional property information or to arrange an inspection, please contact the exclusive brokers:

Jason M. Crimmins, CCIM, SIOR, *President*, 973.379.6644 x 122, jmcrimmins@blauberg.com
Alessandro (Alex) Conte, CCIM, SIOR, *Executive Vice President*, 973.379.6644 x 131, aconte@blauberg.com
Peter J. Murano, Jr., *Managing Executive Director*, 973.379.6644 x 114, pjmurano@blauberg.com
Troy Schaafsma, *Director*, 973.379.6644 x 116, troys@blauberg.com