

AVAILABLE

**600 ROSS AVENUE
EASLEY, SOUTH CAROLINA**



PROPERTY HIGHLIGHTS

- +/- 1.32 Acres
- +/- 8,000 sf
- +/- 3,600 sf shop area
- 3-Bay Doors 12'x16'
- +/- 5,000 sf office/showroom
- Easley City - Pickens County
- TMS 5018-07-59-5757
- Lay down yard
- Value Add Opportunity
- Great Location
- Shop/Retail/Service
- Most convenient to Clemson & Easley, approximately 25 minutes to Greenville

For additional information please contact:

Bradford Johnson, CCIM RE/MAX
Results - Commercial 400 E. McBee
Ave. Suite 112 Greenville, SC 29601
864.295.9988 Direct
864.230.1884 Cellular
brad@bradjohnson-ccim.net



All information deemed to be reliable, but not guaranteed. It is your responsibility to confirm all information.

A Better Way in
Commercial Real Estate

AVAILABLE

**600 ROSS AVENUE
EASLEY, SOUTH CAROLINA**



PROPERTY HIGHLIGHTS

- +/- 1.32 Acres
- +/- 8,000 sf
- +/- 3,600 sf shop area
- 3-Bay Doors 12'x16'
- +/- 5,000 sf office/showroom
- Easley City - Pickens County
- TMS 5018-07-59-5757
- Lay down yard
- Value Add Opportunity
- Great Location
- Shop/Retail/Service
- Most convenient to Clemson & Easley, approximately 25 minutes to Greenville

For additional information please contact:

Bradford Johnson, CCIM RE/MAX
Results - Commercial 400 E. McBee
Ave. Suite 112 Greenville, SC 29601
864.295.9988 Direct
864.230.1884 Cellular
brad@bradjohnson-ccim.net

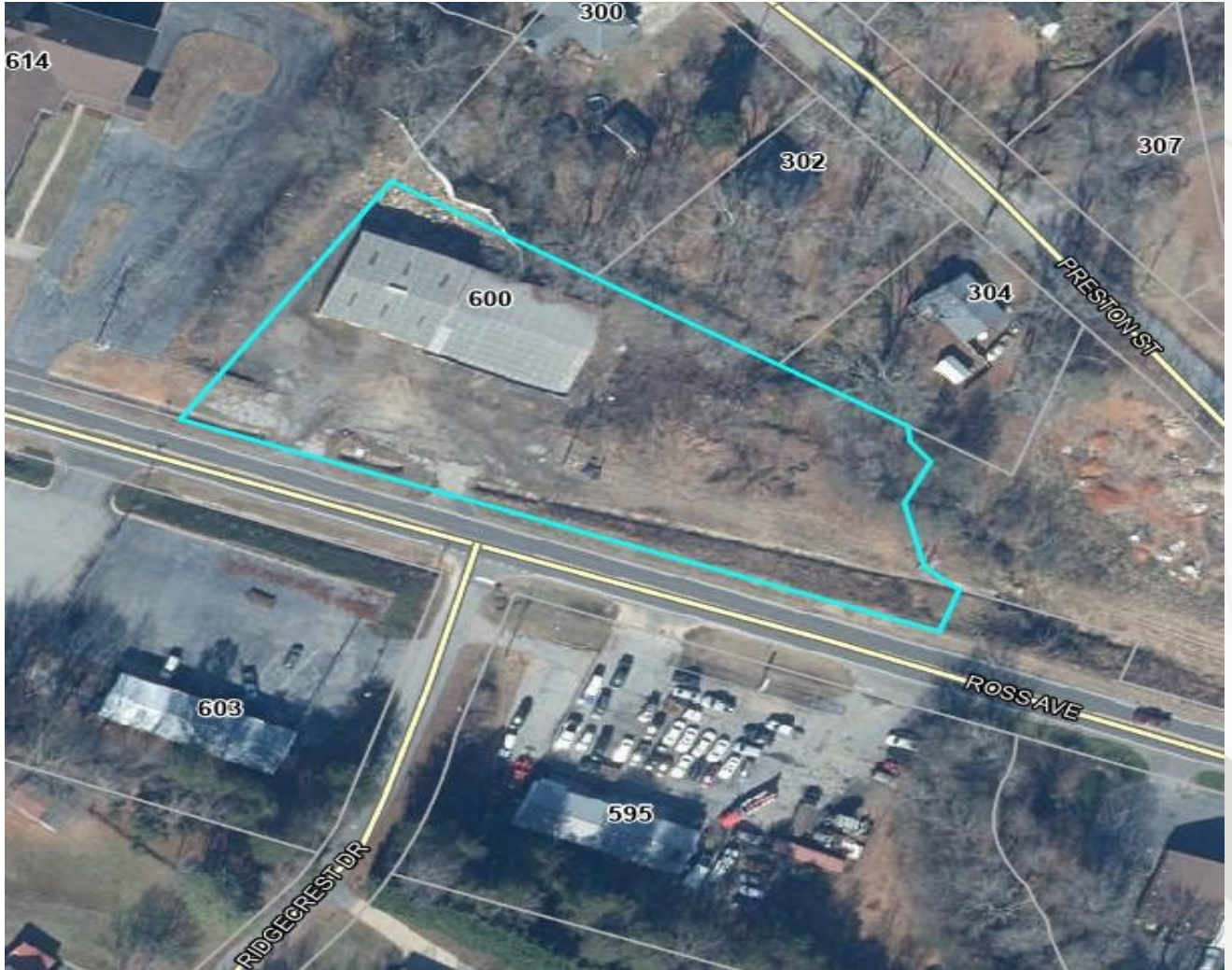


All information deemed to be reliable, but not guaranteed. It is your responsibility to confirm all information.

A Better Way in
Commercial Real Estate

AVAILABLE

**600 ROSS AVENUE
EASLEY, SOUTH CAROLINA**



For additional information please contact:

Bradford Johnson, CCIM RE/MAX
Results - Commercial 400 E. McBee
Ave. Suite 112 Greenville, SC 29601
864.295.9988 Direct
864.230.1884 Cellular
brad@bradjohnson-ccim.net



A Better Way in
Commercial Real Estate

