

FOR LEASE

## Moody Commerce Park

2515 U.S. Highway 78  
Moody, AL 35004



CUSHMAN &  
WAKEFIELD

EGS



### AVAILABLE NOW

- 52,000± SF Warehouse Space
- Lease Rate: **\$6.75 PSF (NNN)**

For more information, please contact:

**BRAD MOFFATT, SIOR**  
Vice President – Industrial  
+1 205 314 5509  
bmoffatt@egsinc.com

2100 3rd Avenue North, Suite 700  
Birmingham, AL 35203  
phone: +1 205 939 4440  
egsinc.com

SCAN HERE



Independently Owned and Operated / A Member of the Cushman & Wakefield Alliance  
Cushman & Wakefield Copyright 2025. No warranty or representation, express or implied, is made to the accuracy or completeness of the information contained herein, and same is submitted subject to errors, omissions, change of price, rental or other conditions, withdrawal without notice, and to any special listing conditions imposed by the property owner(s). As applicable, we make no representation as to the condition of the property (or properties) in question.

FOR LEASE

## Moody Commerce Park

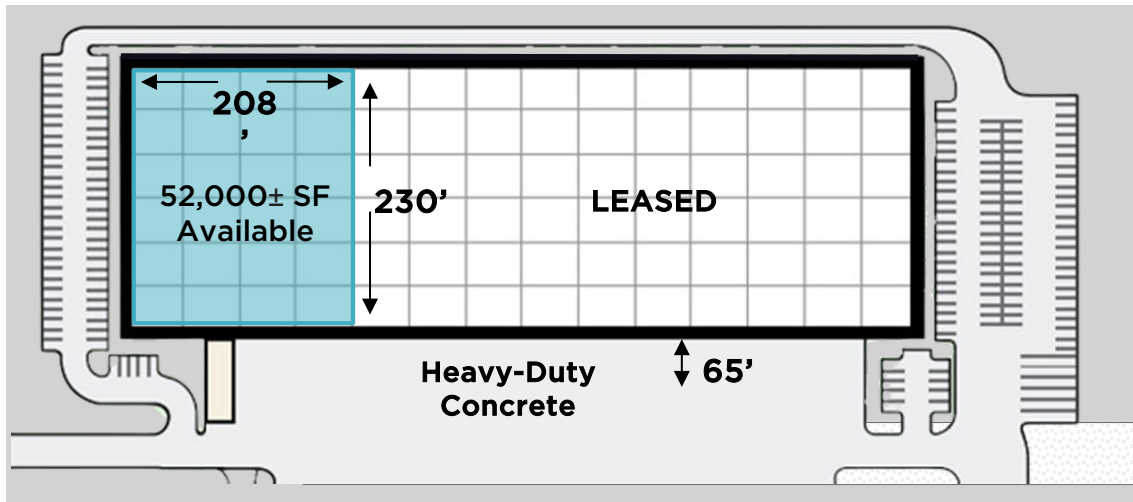
2515 U.S. Highway 78  
Moody, AL 35004



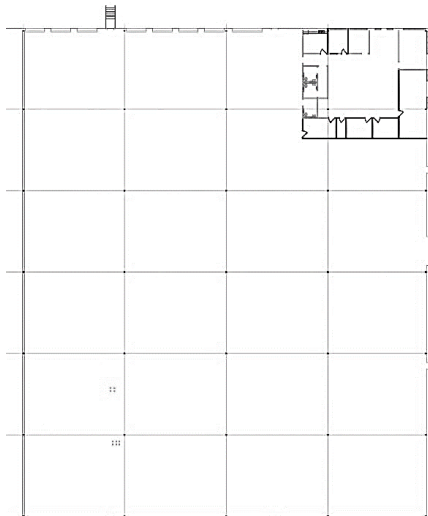
CUSHMAN &  
WAKEFIELD

EGS

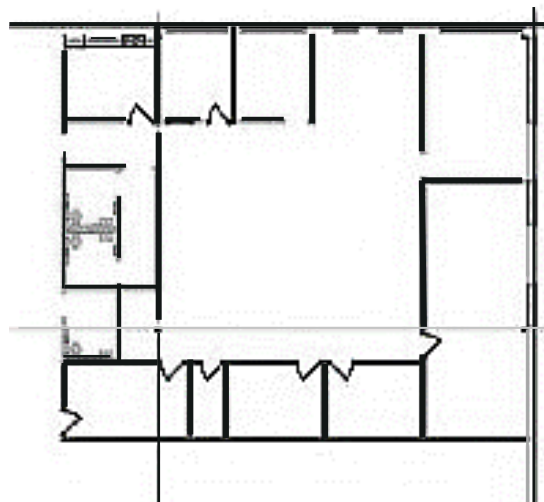
### Site Plan



### Layout Drawing



### Office Space



### PROPERTY HIGHLIGHTS

- 3,500± sf of office area; 48,500± sf of warehouse
- Concrete tilt-up construction; 32' clear
- EFSR sprinkler system
- High-efficiency lighting fixtures
- 400 amp, 3 phase, 480 volt electrical service
- Seven (7) 9' x 10' dock-high doors
- One (1) 12' x 14' drive-in door (front)
- One (1) 12' x 14' grade level door (side)
- Sixty (60) car parking spaces

### LOCATION

