

For Lease

CBRE

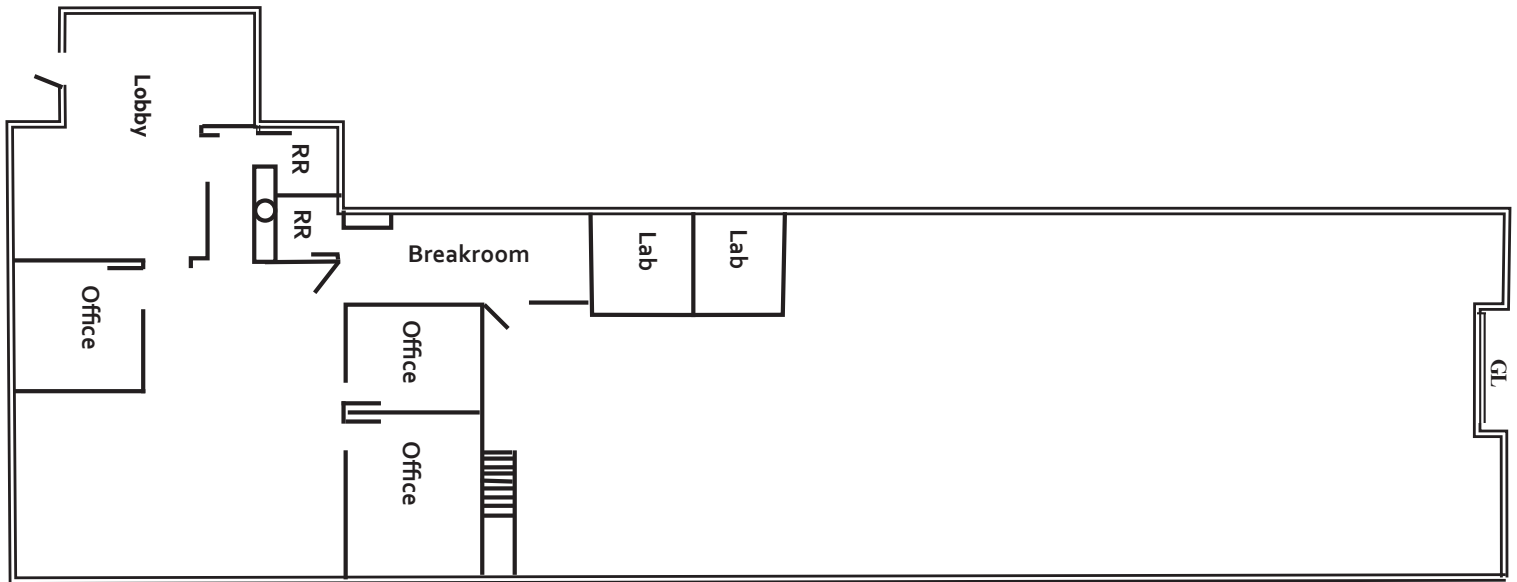
1287 Reamwood Ave

Sunnyvale, CA
www.cbre.com

Industrial/Flex Unit



Floor Plan

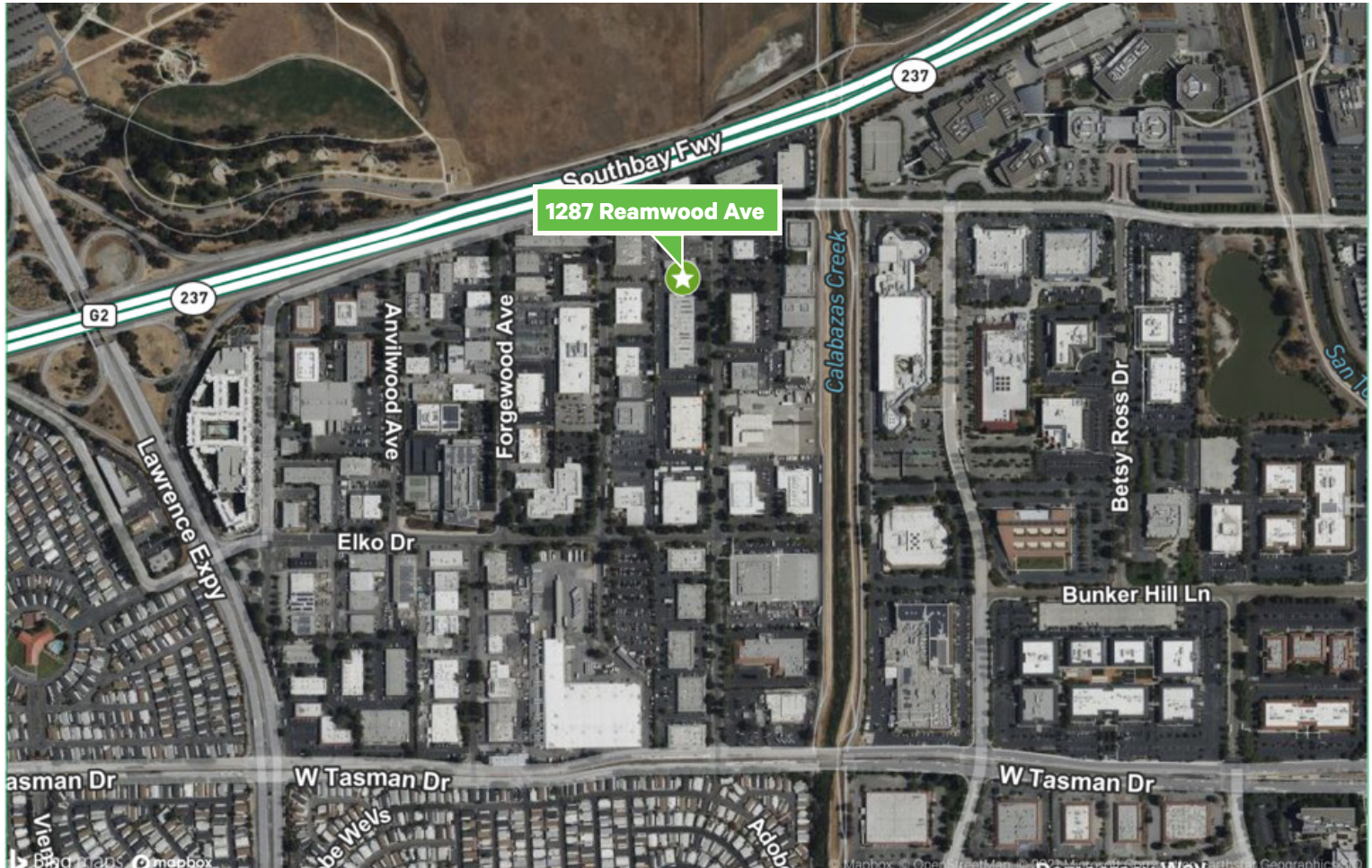


Property Highlights

- + ±5,835 SF (3,535 Warehouse / 2,299 Office)
- + ±1,010 SF Mezzanine (Dead Storage)
- + 2 Lab Spaces
- + Three (3) Private Offices
- + One (1) Grade Level Door (12' x 12')
- + 16' Ft. Clear Height
- + 400 Amps, 277/480 Volt
- + Breakroom with Kitchenette
- + 2:1 Parking Ratio
- + Great Access to 101 and 237 Freeways
- + Industrial Service (MS) Zoning
- + Asking \$1.85NNN/SF (\$.32 OpEx)
- + Asking \$0.50/SF Mezzanine



Map



Contact Us

Nick Whitstone

Senior Vice President
+1 408 453 7438
nick.whitstone@cbre.com
Lic. 01196787

Andrew Trillo

Senior Associate
+1 408 472 3329
andrew.trillo@cbre.com
Lic. 02069367

© 2023 CBRE, Inc. All rights reserved. This information has been obtained from sources believed reliable but has not been verified for accuracy or completeness. CBRE, Inc. makes no guarantee, representation or warranty and accepts no responsibility or liability as to the accuracy, completeness, or reliability of the information contained herein. You should conduct a careful, independent investigation of the property and verify all information. Any reliance on this information is solely at your own risk. CBRE and the CBRE logo are service marks of CBRE, Inc. All other marks displayed on this document are the property of their respective owners, and the use of such marks does not imply any affiliation with or endorsement of CBRE. Photos herein are the property of their respective owners. Use of these images without the express written consent of the owner is prohibited.