

RETAIL SPACE AVAILABLE

150 E. CENTRAL BLVD
ORLANDO, FL 32801



EOLA FOOD HALL

FOOD HALL | DINING | WINE BAR | SPEAKEASY



FOR ADDITIONAL INFORMATION, PLEASE CONTACT:

Lincoln

SHAYNA HANSEN
shansen@lpc.com
407.872.3516

EOLA FOOD HALL

OVERVIEW

Eola Food Hall will **elevate the liveliness and charm** of the local area, introducing a modern amenity to the Downtown area where the surrounding **communities can collaborate and gather**.

The project will include a two-story, 15,000-square-foot food hall featuring a bar and a speakeasy. Curated with the “best of” local eats, Eola Food Hall will spotlight the culinary diversity of the area and serve as a platform for local chefs and entrepreneurs to interact with patrons, presenting a blend of innovative creations and traditional favorites. The project will promote involvement from local businesses and artisans, offering consumers the chance to embrace the essence and distinctiveness of the Downtown Orlando community.

Eola Food Hall has the added amenity of being connected to the **Eola View** event space upstairs. Eola View is an exquisite canvas and the perfect place for weddings, social gatherings, corporate events, and more. Our project sets the stage for unforgettable moments with unique spaces and breathtaking views.



EOLA FOOD HALL

RENDERING



LOCAL AREA

LOCATION



Since its establishment in 1888, Lake Eola Park has served as an iconic symbol for the City of Orlando. Eola Food Hall is just across the street from Lake Eola with breathtaking views of the lake and surrounding areas. Our prime location is just steps away from the planned expansion of Lake Eola Park.



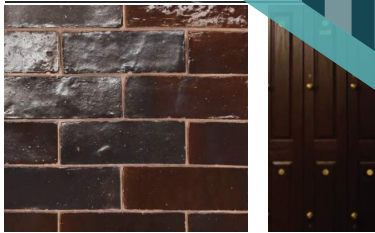
FOOD HALL & MEZZANINE

DESIGN ELEMENTS



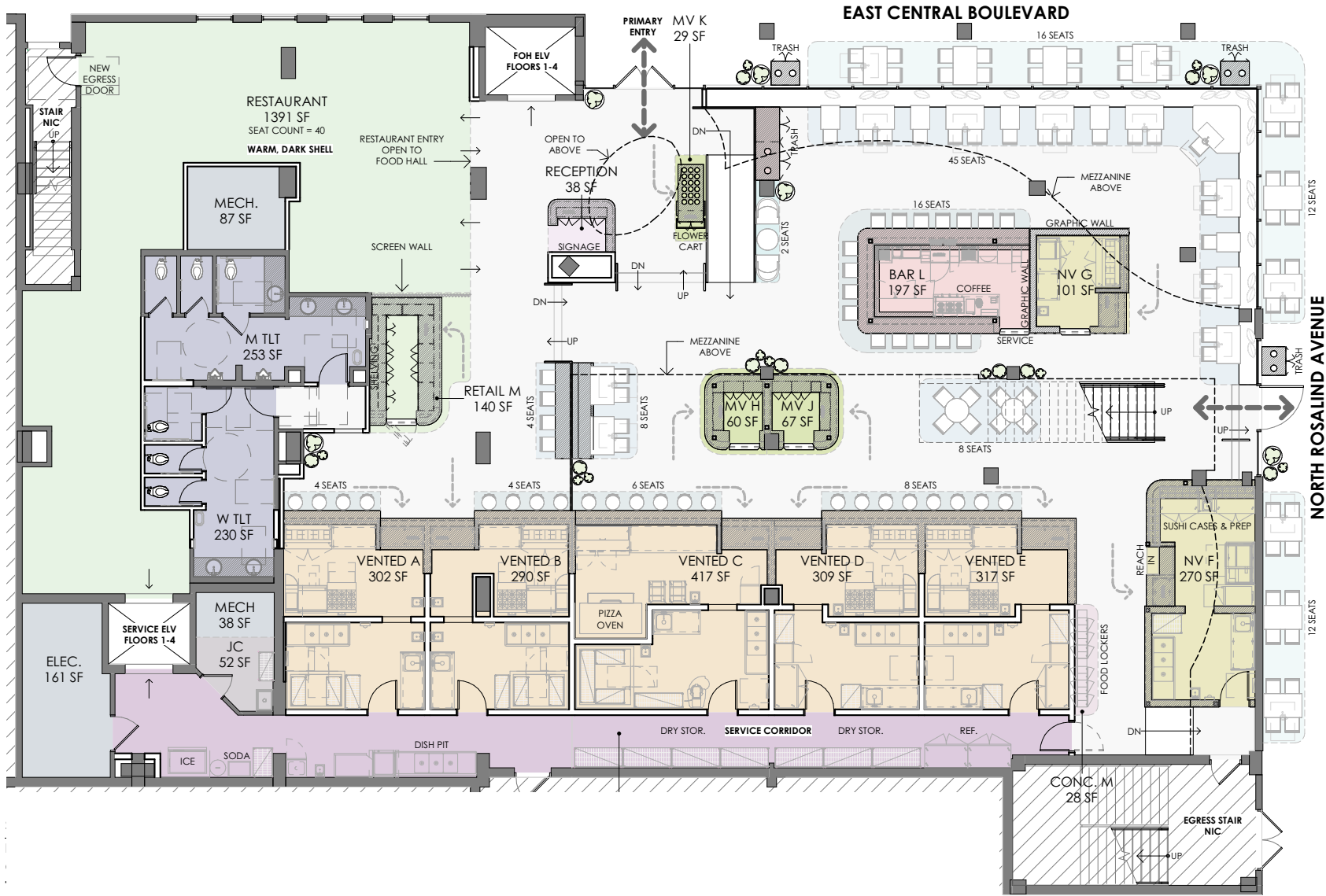
SPEAKEASY & WINE BAR

DESIGN ELEMENTS



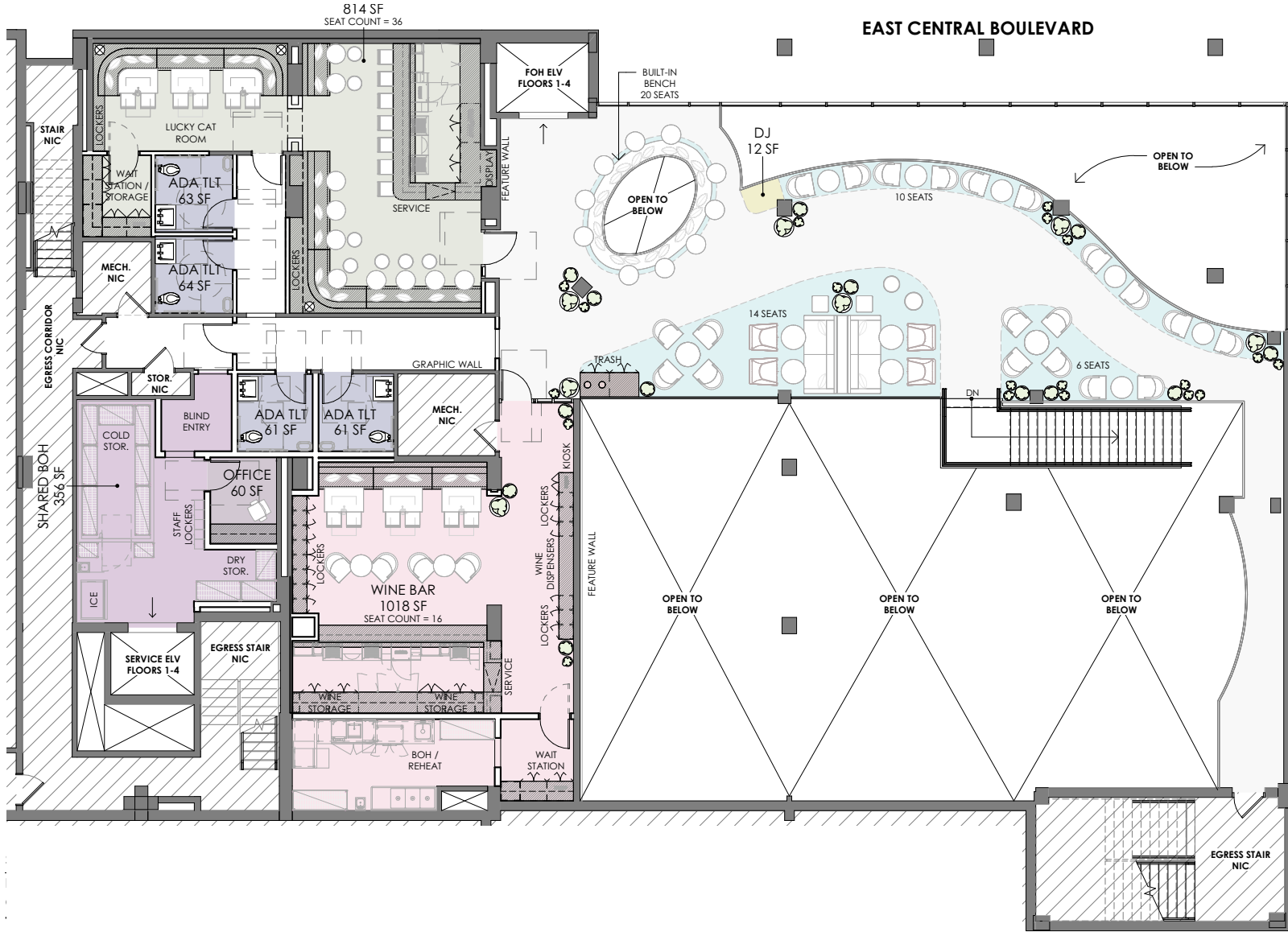
FLOOR PLANS

FIRST FLOOR



FLOOR PLANS

SECOND FLOOR





EOLA FOOD HALL

CONTACT

SHAYNA HANSEN

shansen@lpc.com

407.872.3516

Lincoln

