

# LEESBURG MEDICAL VILLAGE

600 W North Blvd | Leesburg, FL 34788

**Medical Office  
For Lease**

5,396 - 11,234 SF



Leasing Information:  
321.663.3953

**Brian Wilcox**  
321.663.3953  
bwilcox@lpc.com

**Lincoln**

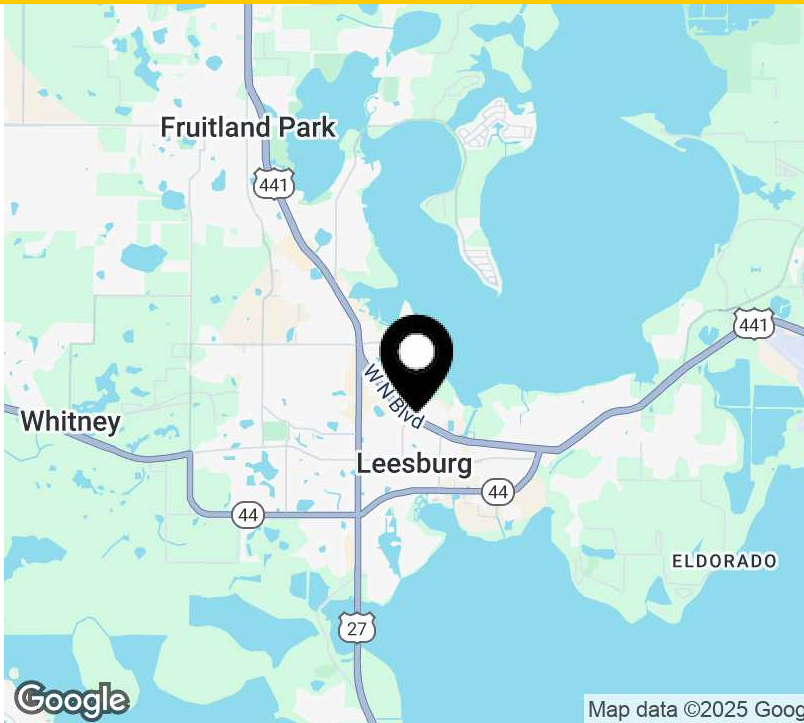
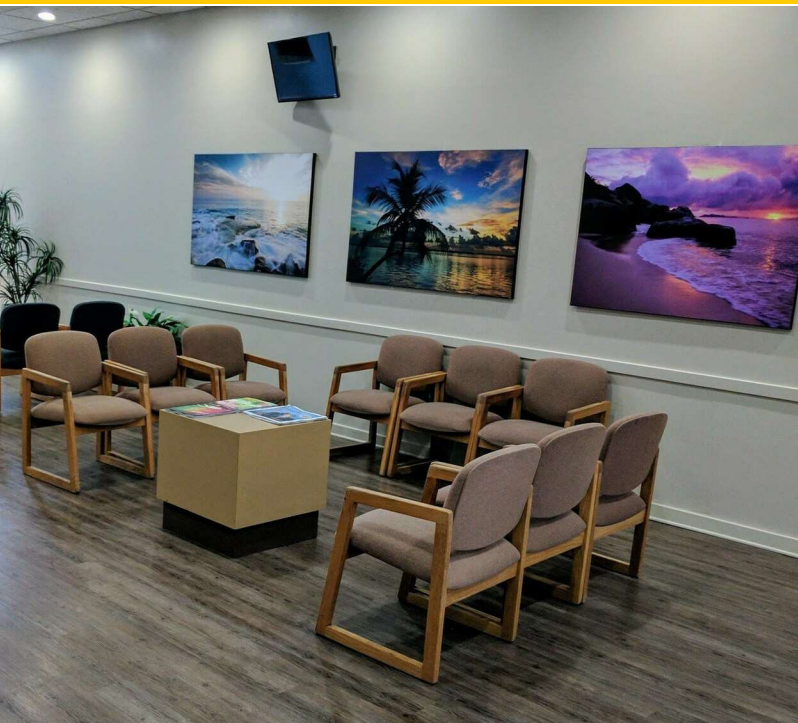
Lincoln Property Company  
333 South Garland Ave Suite 1401  
Orlando, FL 32801

[www.lpc.com](http://www.lpc.com)

# LEESBURG MEDICAL VILLAGE

600 W North Blvd | Leesburg, FL 34788

## Medical Office For Lease



### Offering Summary

Lease Rate:	Negotiable
Building Size:	20,000 SF
Available SF:	5,396 - 11,234 SF

### Property Highlights

- All ground floor entry suites
- Move-in ready
- 100% renovated and exclusively medical
- Covered patient drop-off
- 5/1,000 parking with covered reserved spots
- Monument signage available
- Easy access from US 441, US 27 and SR 44

### Property Overview

20,400 SF building with move-in ready ground floor suites. Subject property is 100% recently renovated and exclusively medical. Monument signage is available. Current specialties include endocrinology, dialysis, and adult day care.

### Location Overview

Located in Leesburg, FL with close proximity to US 441, US 27 and SR 44. situated between Lake Harris and Lake Griffin. Within 2 minutes of the Leesburg Regional Medical Center and downtown Leesburg. Subject property is equidistant to Tavares and The Villages.

Availabilities	SF	Lease Rate	Date Available
Suite D	5,838 - 11,234 SF	Negotiable	Available
Suite E	5,396 - 11,234 SF	Negotiable	Available

**Brian Wilcox**  
321.663.3953  
bwilcox@lpc.com

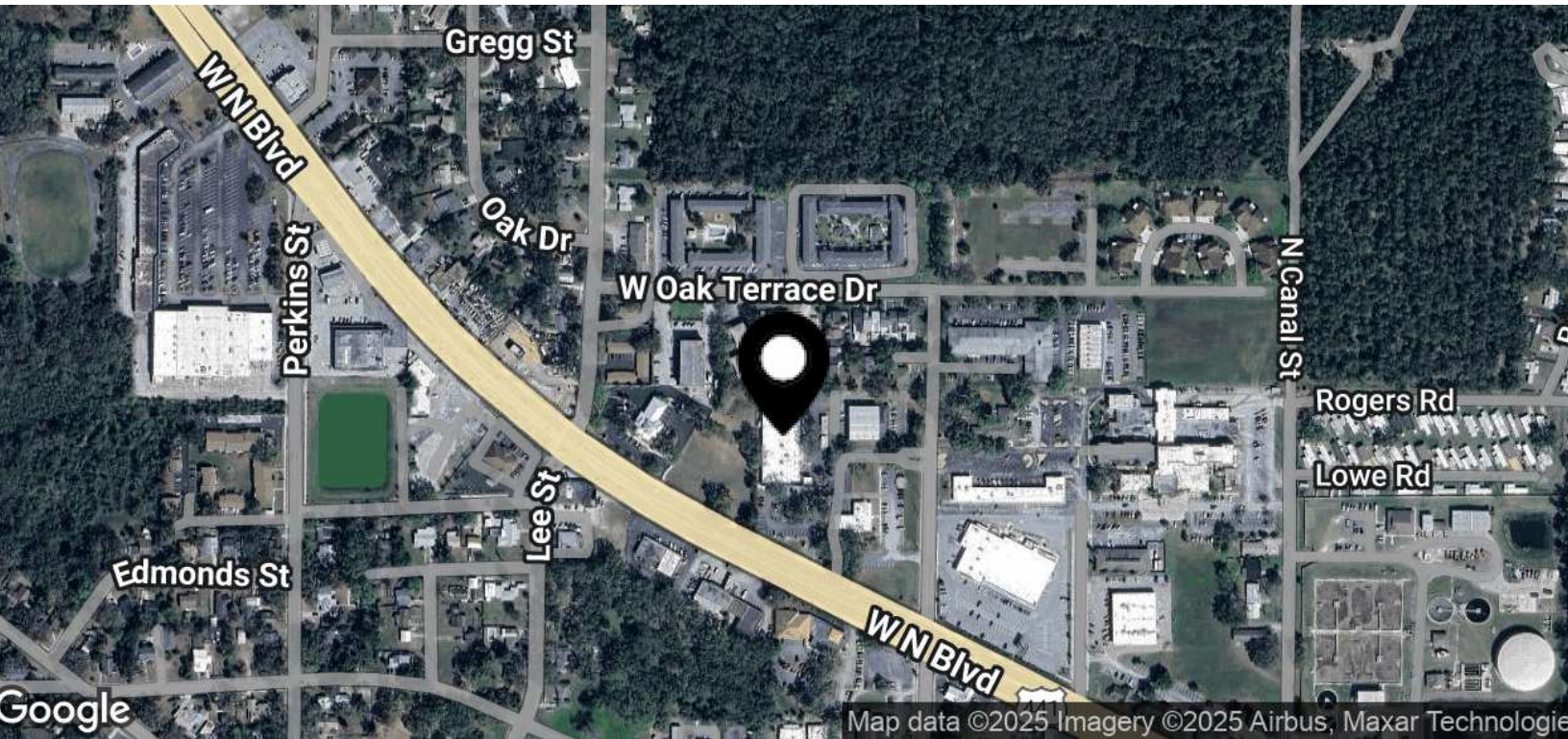
**Lincoln**



# LEESBURG MEDICAL VILLAGE

600 W North Blvd | Leesburg, FL 34788

Property Location



Brian Wilcox  
321.663.3953  
bwilcox@lpc.com

Lincoln



# LEESBURG MEDICAL VILLAGE

600 W North Blvd | Leesburg, FL 34788

Property Renderings



Exterior rendering of future storefront renovations



Exterior rendering of future storefront renovations

**Brian Wilcox**

321.663.3953

[bwilcox@lpc.com](mailto:bwilcox@lpc.com)

**Lincoln**





# LEESBURG MEDICAL VILLAGE

600 W North Blvd  
Leesburg, FL 34788

Leasing Information:  
321.663.3953

**Brian Wilcox**  
321.663.3953  
bwilcox@lpc.com

## Lincoln

Lincoln Property Company  
333 South Garland Ave Suite 1401  
Orlando, FL 32801

[www.lpc.com](http://www.lpc.com)