

145 BROADWAY

EVERETT MASSACHUSETTS

+/- 7,354 SF

WAREHOUSE/INDUSTRIAL



BURGESS
PROPERTIES

BurgessProperties.com

Steve Nohrden, President
Burgess Properties, LLC
Steve@BurgessProperties.com
978-895-2208

Charlie Jacob, Senior Associate
Burgess Properties, LLC
Charlie@BurgessProperties.com
339-225-1958



BUILDING SIZE: +/-7,354 SF
AVAILABLE SPACE: +/-7,354 SF
LAND SIZE: +/-13,503 SF (.31 AC)
PARKING: +/- 20 Spaces (+/-2.72/1,000 SF)
WATER: Public
SPRINKLER: Full Wet System
HVAC: Air-Conditioning and Gas Heaters
CEILING HEIGHT: +/-14'6"
LOADING: Two (2) Drive-In Overhead Doors

FULL BUILDING OCCUPANT OPPORTUNITY

As Exclusive Agent for the owner, Burgess Properties, LLC is pleased to present the opportunity to lease well-located industrial space just minutes to Boston, near the intersection of Route 99 and Route 16 in Everett.

145 Broadway

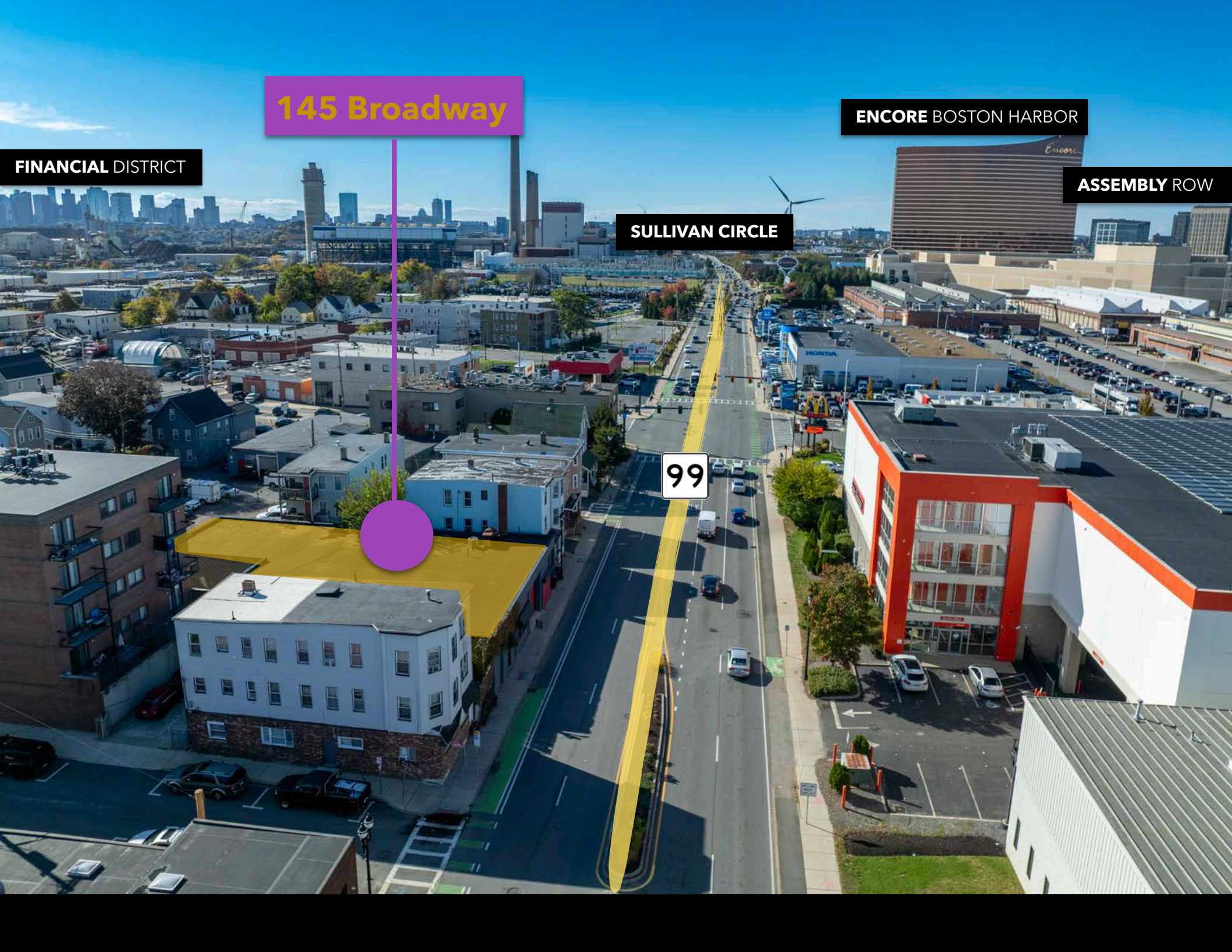
ENCORE BOSTON HARBOR

ASSEMBLY ROW

SULLIVAN CIRCLE

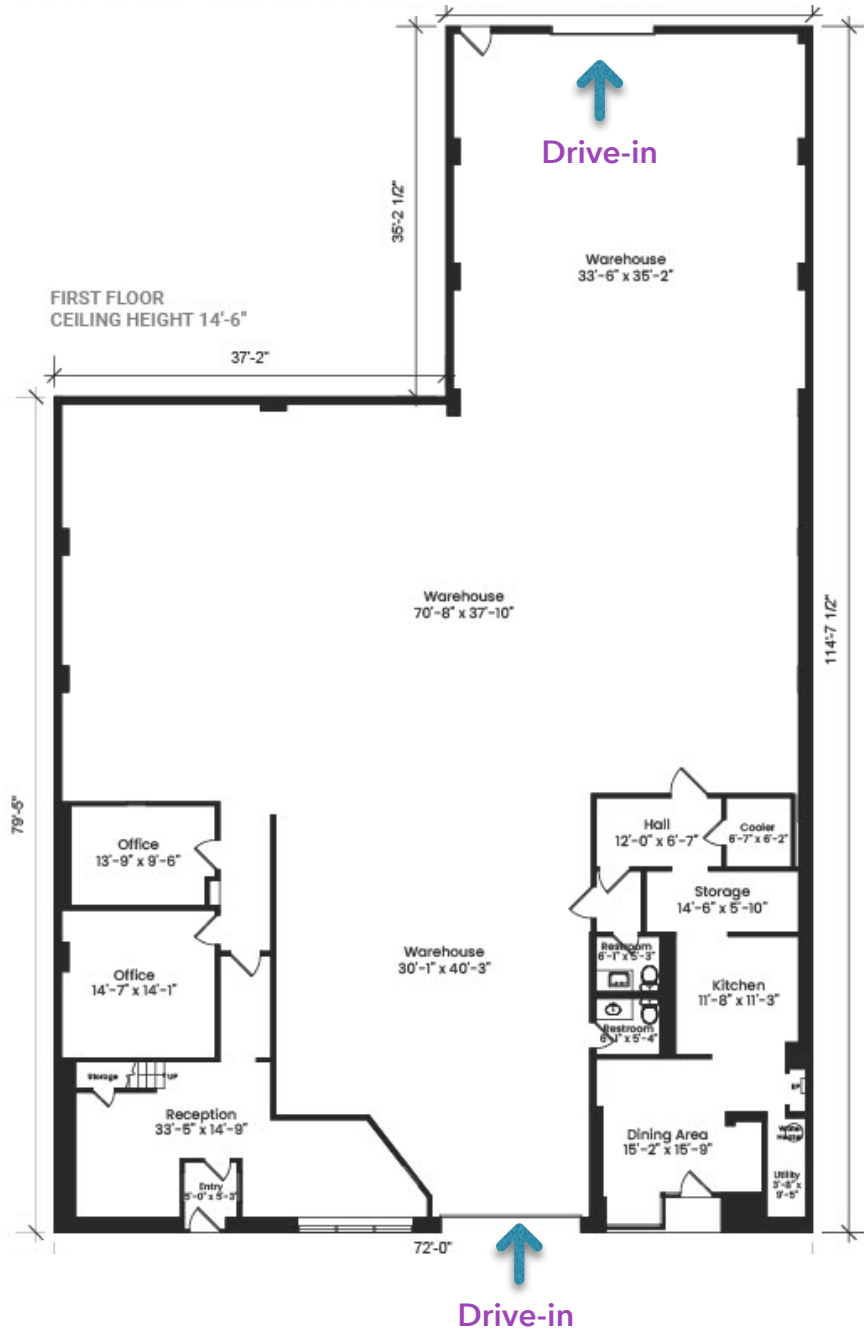
99

FINANCIAL DISTRICT

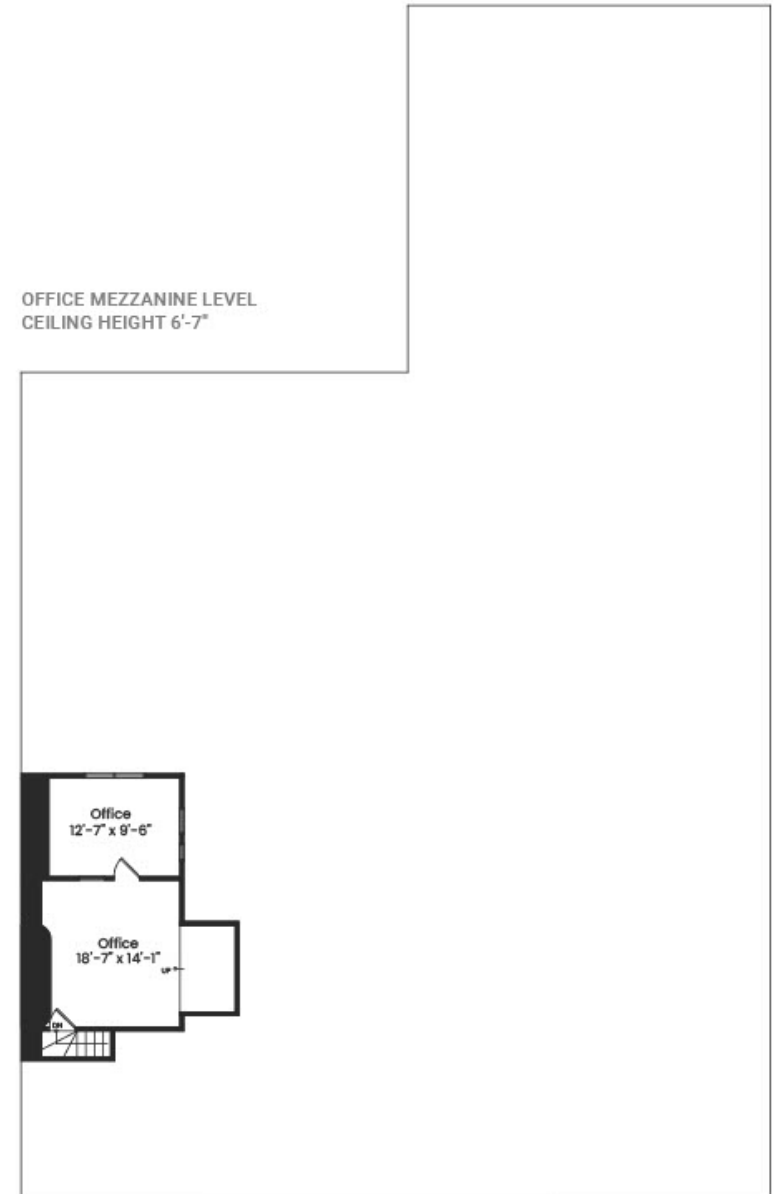


FLOOR PLAN

FIRST FLOOR



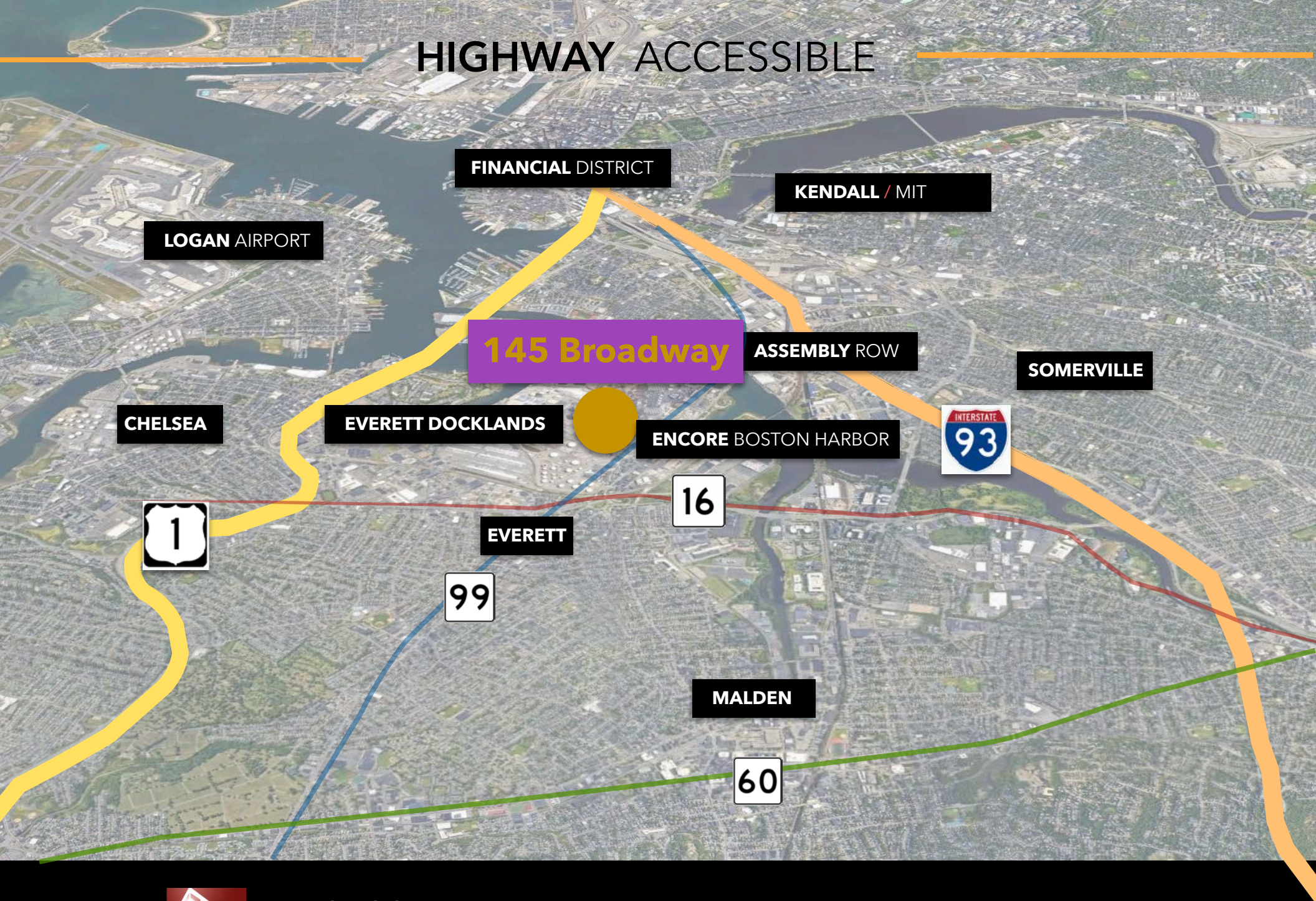
SECOND FLOOR



AMPLE ON-SITE FENCED-IN PARKING



HIGHWAY ACCESSIBLE



BURGESS
PROPERTIES

BurgessProperties.com