

# GRACE

## PRESBYTERIAN CHURCH

5.03 Acres  
on Byram Parkway



130 Byram Parkway, Byram, MS

**CBRE**

# Property Highlights

- \$645,000
- Byram's finest business address
- 5,040 SF church facility, easily convertible to professional office
- 5.03 acres on Byram Parkway
- .32 Mile south of Siwell Road
- Across Parkway from new Tractor Supply, under construction
- Adjacent to proposed City of Byram Municipal Park and Sports Complex
- Owner will consider subdividing the Property



130 Byram Parkway, Byram, MS

**CBRE**

# Property Photos



130 Byram Parkway, Byram, MS

**CBRE**

# Neighborhood Images



130 Byram Parkway, Byram, MS

**CBRE**

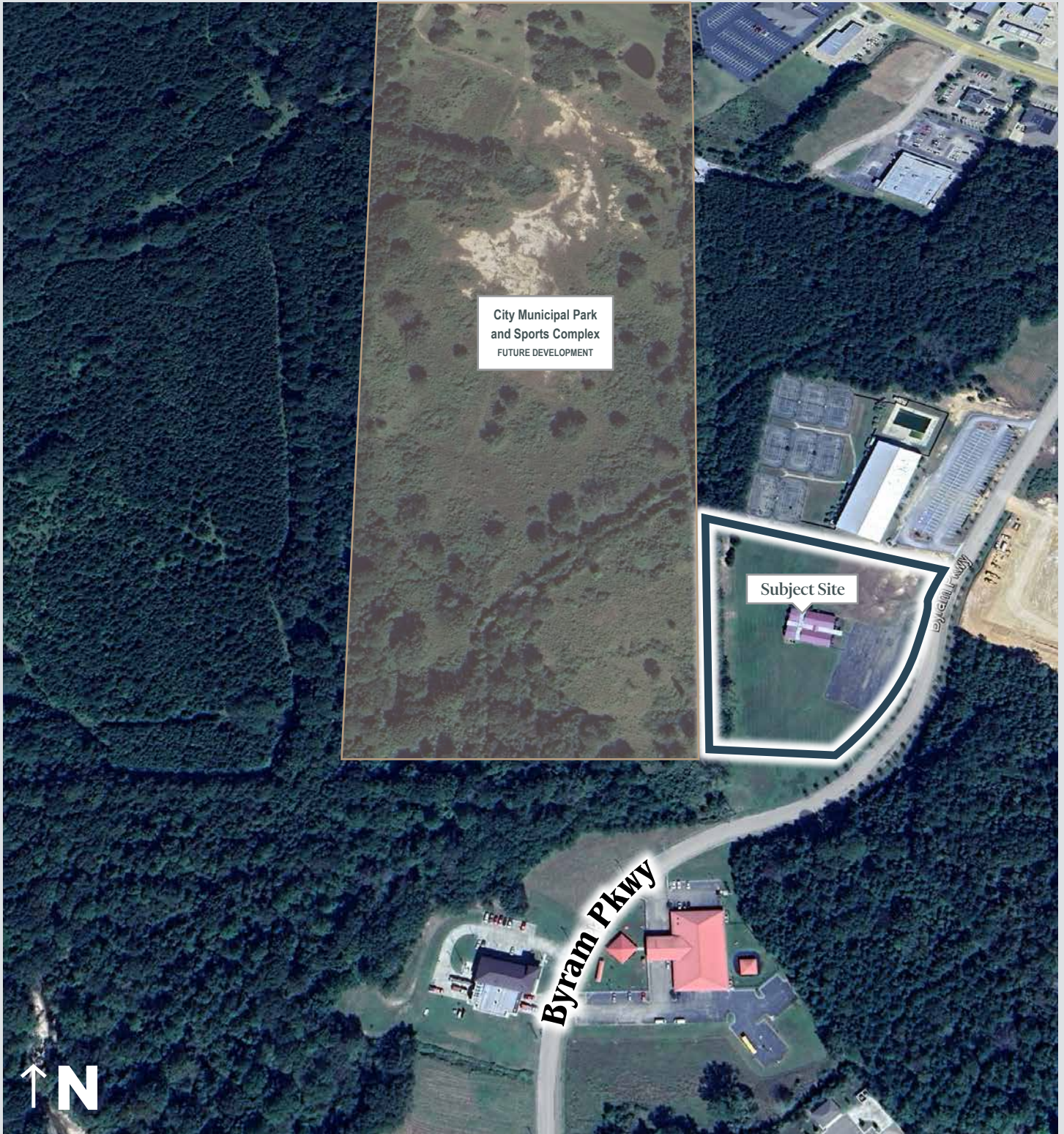
# Aerial



130 Byram Parkway, Byram, MS

**CBRE**

# Aerial



130 Byram Parkway, Byram, MS

**CBRE**

# Trade Aerial



130 Byram Parkway, Byram, MS

**CBRE**



Contact Us:

**Richard Ridgway**

Senior Vice President

+1 601 420 8080

[richard.ridgway@cbre.com](mailto:richard.ridgway@cbre.com)

© 2023 CBRE, Inc. All rights reserved. This information has been obtained from sources believed reliable, but has not been verified for accuracy or completeness. You should conduct a careful, independent investigation of the property and verify all information. Any reliance on this information is solely at your own risk. CBRE and the CBRE logo are service marks of CBRE, Inc. All other marks displayed on this document are the property of their respective owners, and the use of such logos does not imply any affiliation with or endorsement of CBRE. Photos herein are the property of their respective owners. Use of these images without the express written consent of the owner is prohibited.



130 Byram Parkway, Byram, MS

**CBRE**