

Lot A - 430'

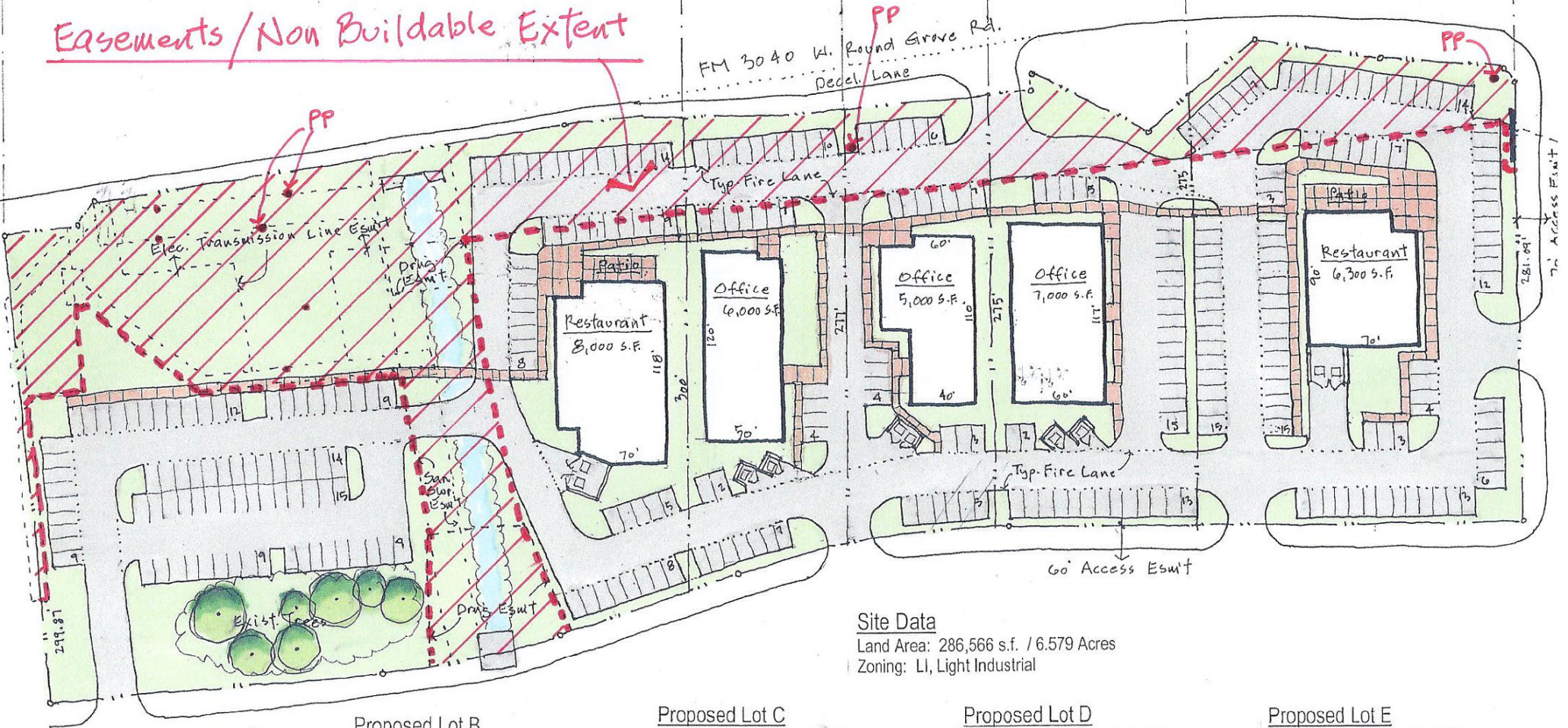
Lot B - 100'

Lot C - 94'

Lot D - 126'

Lot E - 206'

Easements / Non Buildable Extent



Site Data

Land Area: 286,566 s.f. / 6.579 Acres
 Zoning: LI, Light Industrial

Proposed Lot A
 Land Area: ~138,278 s.f. / 3.17 Acres
 Restaurant: 8,000 s.f. / 1 Story
 Parking Required: 1.5 / 100 s.f. = 120 Spaces
 Parking Provided: 121 Spaces

Proposed Lot B
 Land Area: ~28,500 s.f. / .654 Acre
 Office: 6,000 s.f. / 1 Story
 Parking Required: 1/200 s.f. = 30 Spaces
 Parking Provided: 30 Spaces

Proposed Lot C
 Land Area: ~25,662 s.f. / .589 Acre
 Office: 5,000 s.f. / 1 Story
 Parking Required: 1/200 s.f. = 25 Spaces
 Parking Provided: 25 Spaces

Proposed Lot D
 Land Area: 33,768 s.f. / .775 Acre
 Office: 7,000 s.f. / 1 Story
 Parking Required: 1/200 s.f. = 35 Spaces
 Parking Provided: 35 Spaces

Proposed Lot E
 Land Area: ~60,358 s.f. / 1.386 Acres
 Restaurant: 6,300 s.f. / 1 Story
 Parking Required: 1.5 / 100 s.f. = 95 Spaces
 Parking Provided: 99 Spaces

Schematic Site Plan

Lot 4R2, Block A, Texas Instruments Addition
 Lewisville, Texas

Scale: 1" = 60' Feb. 10, 2014



DUGGAN REALTY ADVISORS LLC
 Contact Jim Duggan, Office: 972-980-9686 x106
 jim@dugganrealty.com

Chris Rador, Architect, Inc.
 Architecture & Planning
 1101 Westwood Drive Plano, Texas 75075 (972) 985-3833