

100 DOMAIN DRIVE

EXETER, NEW HAMPSHIRE



Class A Office/Flex/R&D Space
Available For Lease

NEWMARK

Building Specifications

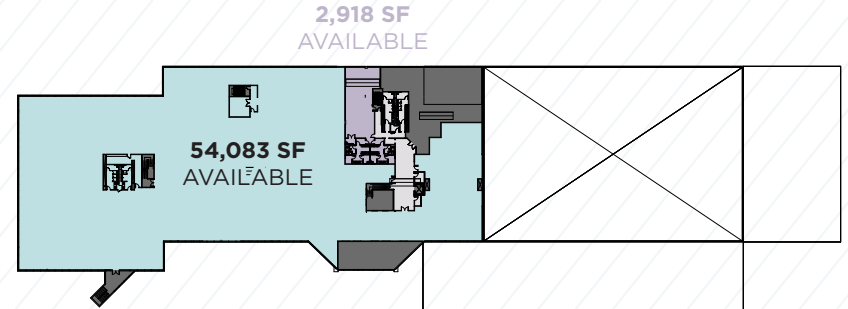
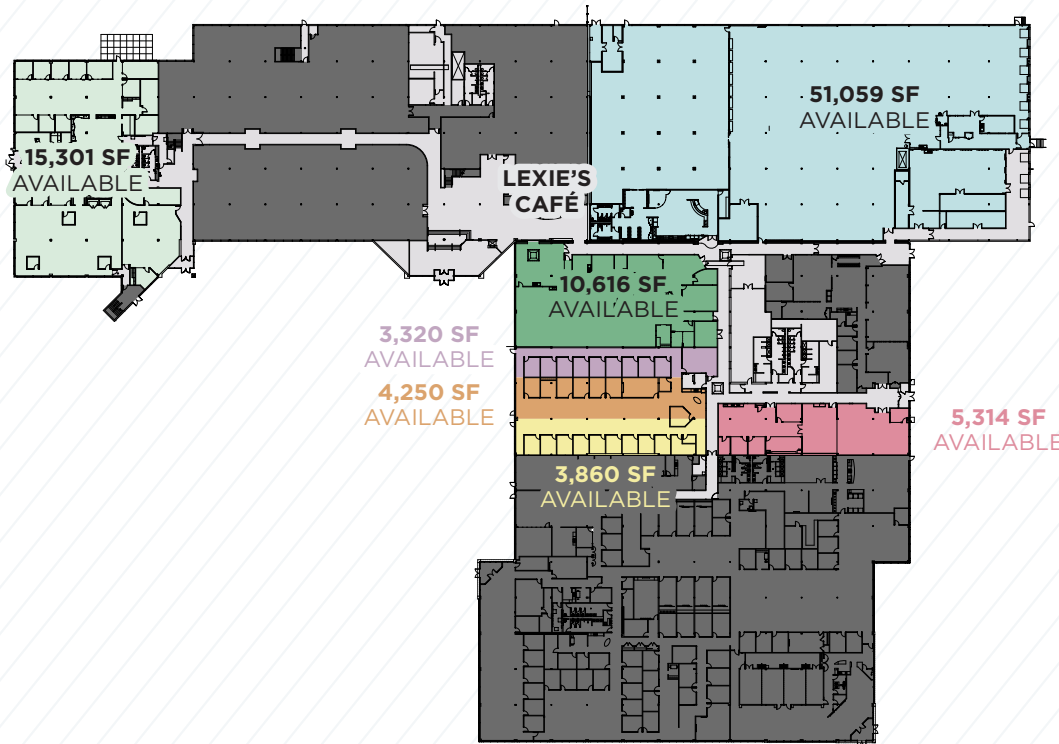
Building Size

First Floor:	198,575 SF
Second Floor:	64,911 SF
Total	263,486 SF
Lot Size	33 Acres
Parking:	924 spaces at 100 Domain with the ability to add 150 additional spaces. 130 spaces at 200 Domain via easement.
Elevators:	1 Beckwith hydraulic elevator with 4,000-lbs capacity 1 handicapped lift
Loading:	9 loading docks (3 for common usage)
Roof:	Fully adhered EPDM, 2011
Construction:	Steel frame with masonry brick exterior
Foundation:	5" slab on grade
Year Built/Renovated:	1984/2012
Zoning:	Industrial
Column Spacing:	25'25'
Finished Ceiling Height:	9-12' in office, 24' clear in warehouse

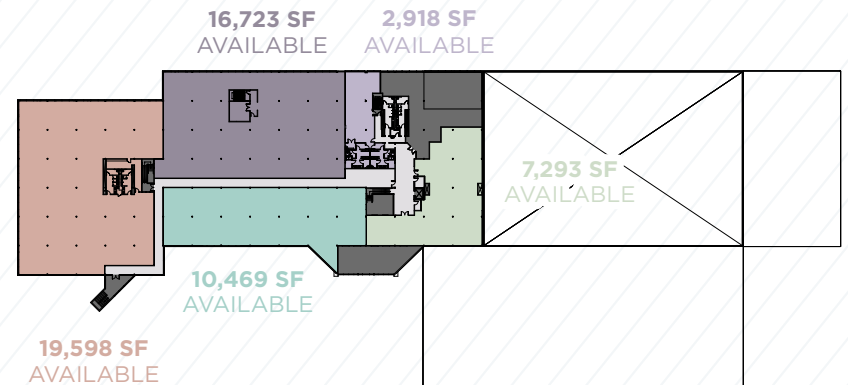
Power:	Public Service Company of New Hampshire 4,000 Amps @ 480/277 Volts Total
Emergency Power:	One (1) 45 kW generator for life safety
Natural Gas:	Unitil
Fire Protection:	Wet System. 2000 gpm, 100 psi via on-site detention pond Simplex fire alarm system
Telecommunications:	Bayring, FairPoint Communications, Fiber and Copper
Bathrooms:	5 bathroom cores; 1 shower core
HVAC:	20 rooftop mounted units, gas-fired for heating. Combination CAV and VAV Systems
Amenities:	Café, fitness center, yoga room and showers

Floor Plans

First Floor



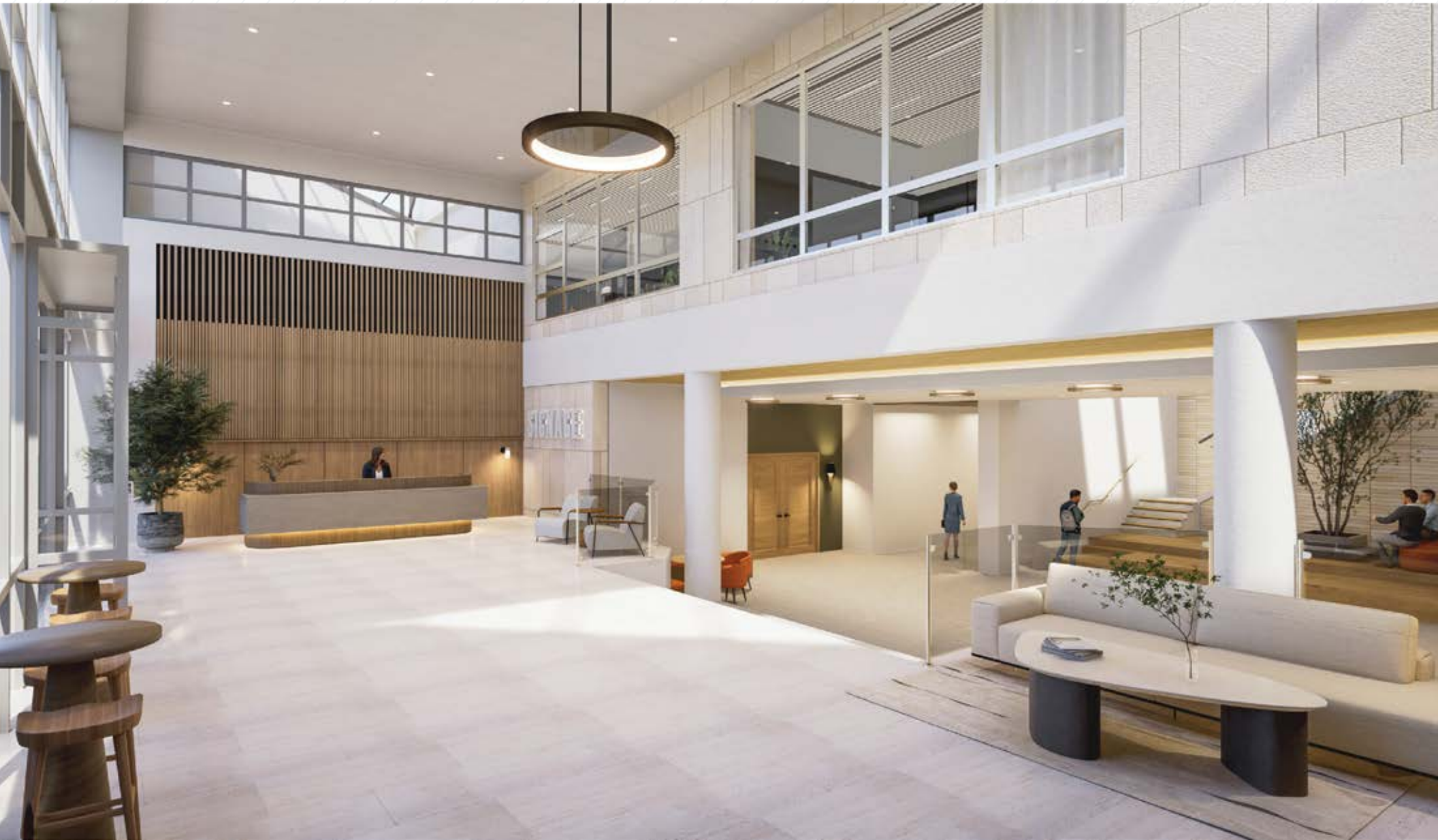
Second Floor Existing Conditions



Second Floor Subdivision Plan

Proposed Renovations

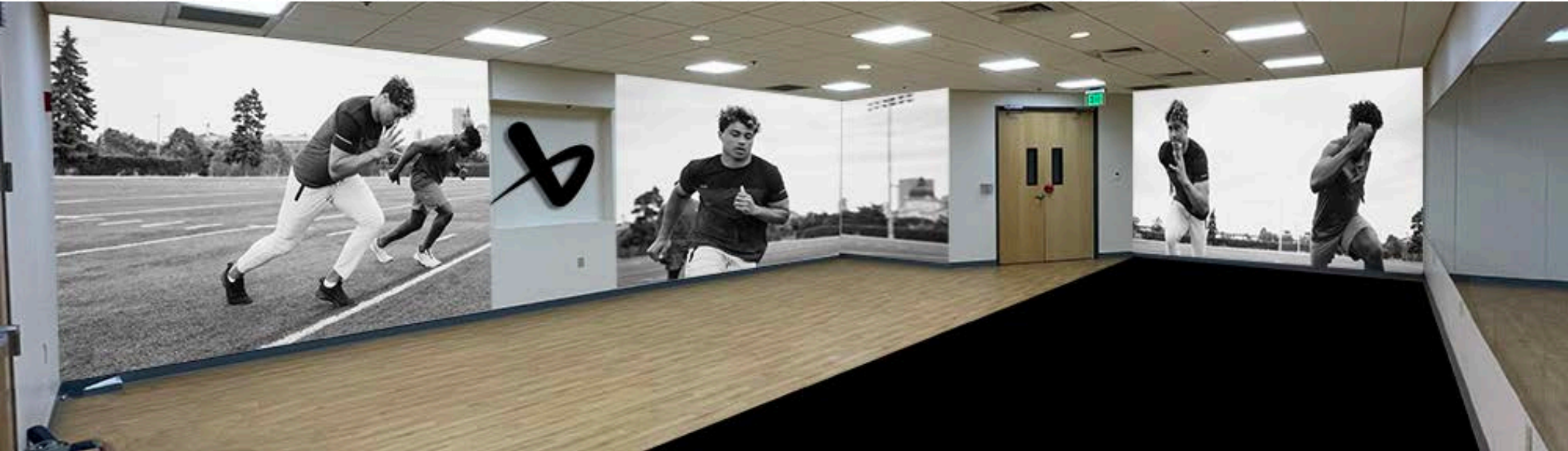
Lobby





Proposed Renovations

Fitness
















1/2 MILE FROM ROUTE 111

CORPORATE NEIGHBORS





KITTERY
 20 MINS
PORTSMOUTH
 15 MINS
MANCHESTER
 30 MINS
HAMPTON
 7 MINS
BOSTON
 50 MINS

100 DOMAIN DRIVE









FOR MORE INFORMATION, PLEASE CONTACT:

J.R. McDonald
 jr.mcdonald@nmrk.com
 617.863.8502

Tyler McGrail
 tyler.mcgrail@nmrk.com
 617.863.8511

NEWMARK