



FOR LEASE

EAST BANK LOFTS MAKER SPACE

537 SE ASH STREET
PORTLAND, OR 97214

SUITE 102/103: +/-2,882 RSF

RATE: \$14/RSF NNN

JOSH BEAN, SIOR
josh@ecacre.com

BRIAN HANSON, MREF
brian@ecacre.com

503.205.0610



ETHOS COMMERCIAL ADVISORS LLC | 1111 NE FLANDERS ST, SUITE 201 | PORTLAND, OR 97232

These marketing materials do not constitute an offer to sell or lease, and do not constitute or contain promises, representations or warranties of any kind. The information in these marketing materials may contain approximations and images for illustration purposes. The owner, broker and their agents assume no risk or liability for inaccuracies, errors or omissions in these marketing materials. The terms and conditions of any transaction with respect to the property shall be contained exclusively in a written purchase and sale agreement or lease between the owner and the purchaser or tenant. Prospective purchasers or tenants should perform their own inspections of the property to verify its condition, permitted uses, and all other characteristics. | © 2025 Ethos Commercial Advisors LLC. All Rights Reserved. | 7.6.25

LICENSED IN OREGON, WASHINGTON, AND TEXAS

The East Bank Lofts offers light- filled creative office space in a converted 1912 industrial building. Exposed brick and heavy timber beams provide an authentic and appealing aesthetic.

The East Bank Lofts' maker space is highly efficient with both retail and production areas. A bank of three large windows, exposed bricks and beams, and sealed concrete floors afford immense character. The roll-up door, service ramp, loading zone, trench drains, and multi-compartment sinks allow for maximum functionality. This space is perfectly suited for a multitude of light manufacturing and maker uses.

BUILDING HIGHLIGHTS

- Historic building with some seismic upgrades
- Common area conference room
- Tenant bike parking
- On-site storage available
- Operable windows
- Abundant natural light
- On-site coffee shop and restaurant
- Abundant neighborhood amenities
- Secured parking available (call for pricing)
- Wired with fiber optic cable

Retail /
production mix

Roll-up door
with service ramp

Trench drains

3-phase,
300-amp power

Loading zone

Two- and three-
compartment sinks

Storage areas



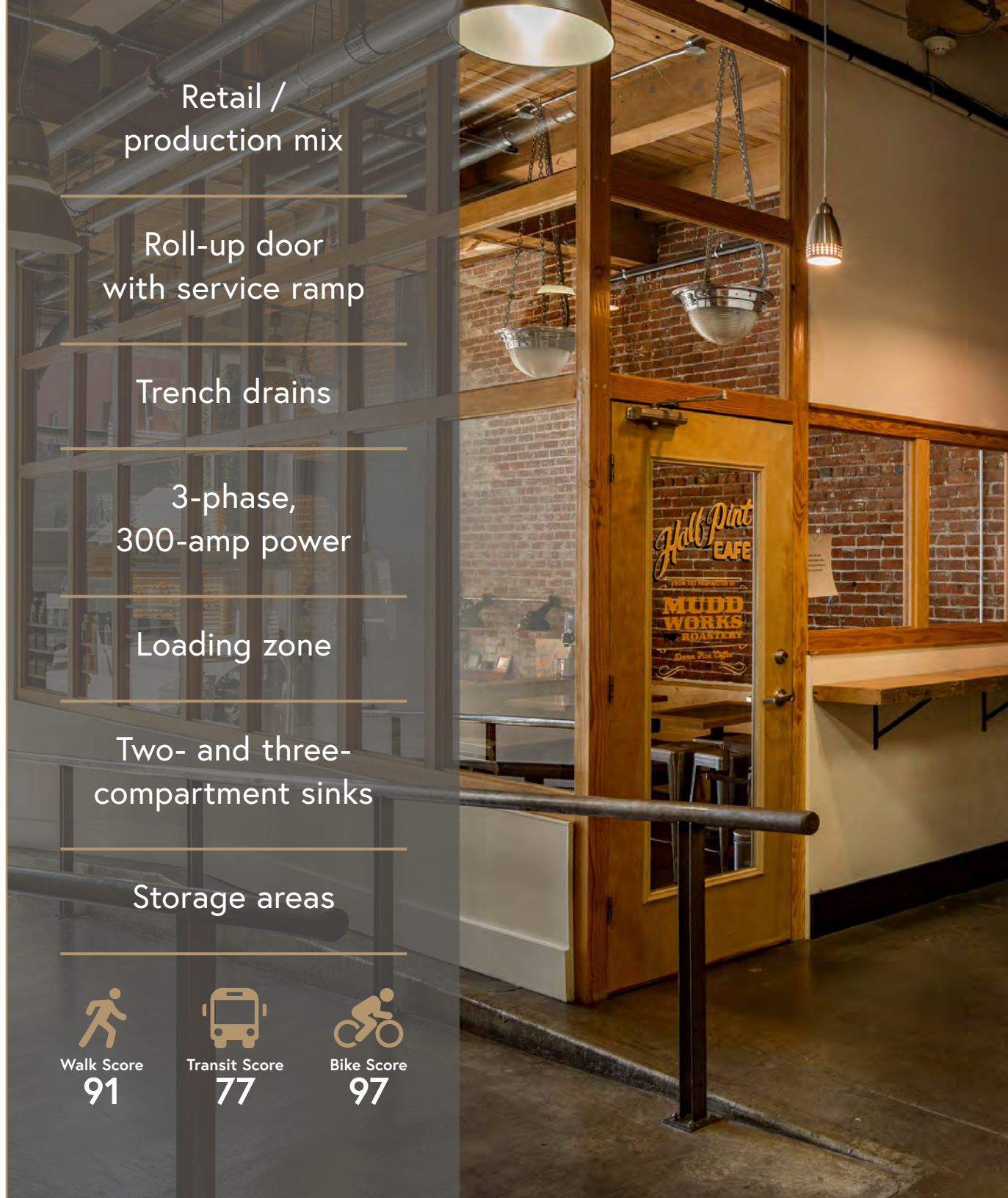
Walk Score
91



Transit Score
77

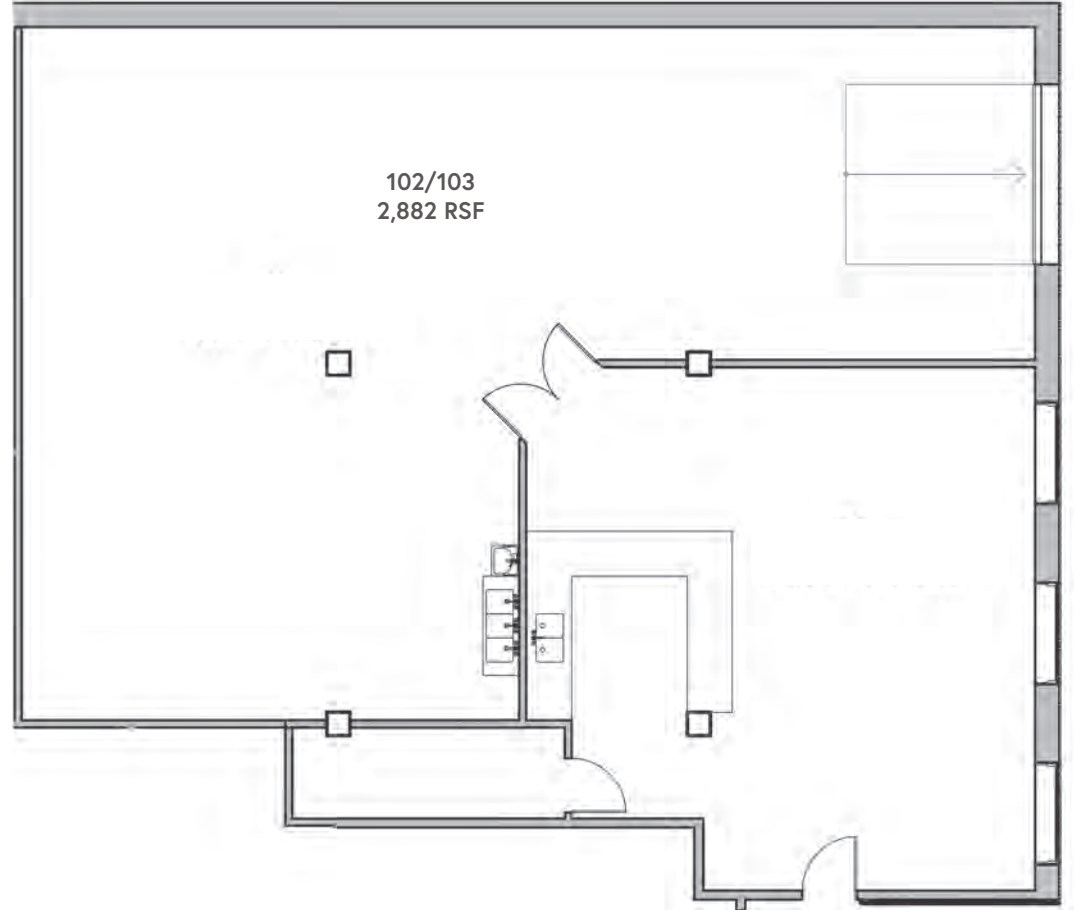


Bike Score
97



SUITE 102/103

+/-2,882 RSF



THIS DRAWING IS NOT TO SCALE AND IS FOR ILLUSTRATIVE PURPOSES ONLY





OREGON
CONVENTION CENTER

MODA CENTER

PARKING

LLOYD CENTER

DOWNTOWN PORTLAND

BURNSIDE BRIDGE

PARKING

RANGER

KUU

EASTSIDE
EXCHANGE

BAG

WELLSPENT
MARKET

C'EST SI BON

DIMOS
PIZZA

BOSSANOVA
BALLROOM

WURST

SIZZLE PIE

KINOSHII

DIRTY
PRETTY

HEY LOVE

THE PAPER BRIDGE

SCOTCH LODGE

THE PAPER BRIDGE

THE PAPER BRIDGE

THE PAPER BRIDGE

THE PAPER BRIDGE

THE PAPER BRIDGE

THE PAPER BRIDGE

THE PAPER BRIDGE

THE PAPER BRIDGE

THE PAPER BRIDGE

THE PAPER BRIDGE

THE PAPER BRIDGE

THE PAPER BRIDGE

EAST BANK LOFTS

ON-SITE AMENITIES

Presley Poe's
GOLD STUDIOS

EXQUISITE
CREATURES

Coffee Shop

bare
BEAUTY



J & M Cafe