

# FOR LEASE

5102 West Village Green Drive  
Midlothian, VA 23112

The Grove 2

For Lease: Office Spaces



Square Footages Available: 836 SF and 1,277 SF

**Terry Earnest, CCIM**

(804) 744-9290 | [terry@ccrealtyllc.com](mailto:terry@ccrealtyllc.com)

**Connor Williams**

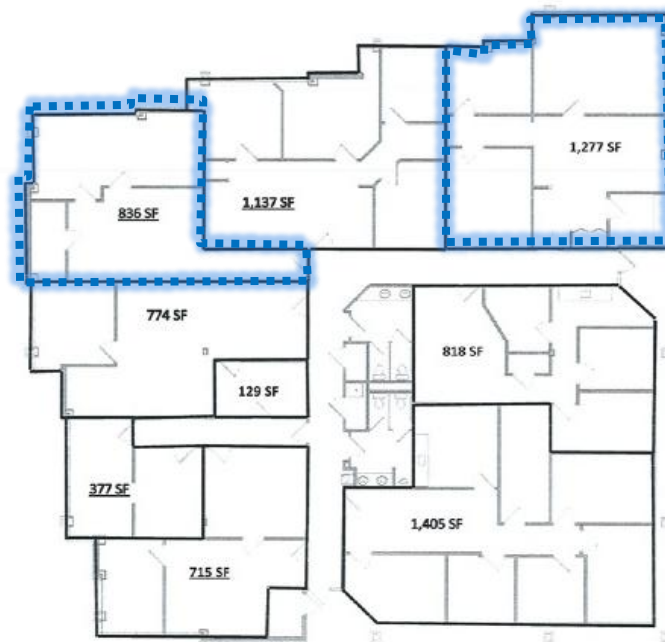
(804) 387-3555 | [connor@ccrealtyllc.com](mailto:connor@ccrealtyllc.com)

**Chesterfield Commercial Realty**

5001 West Village Green Drive, Suite 203 | Midlothian, VA 23112

# Property Details

- Spaces Available
  - 836 SF (Available Today)
  - 1,277 SF (Available January 1<sup>st</sup>, 2026)
- C-2 Zoning
- Full - Service Lease Rates \$19-21 SF
- Convenient Brandermill Location
- Close access to I-288, Powhite Parkway, Hull Street Road & Old Hundred Road



<u>Demographics</u>	<u>1 Mile</u>	<u>3 Miles</u>	<u>5 Miles</u>
<b>Total Population:</b>	<b>5,035</b>	<b>49,402</b>	<b>113,983</b>
<b>Average Household Income:</b>	<b>\$110,315</b>	<b>\$107,671</b>	<b>\$118,375</b>



DISCLAIMER: This information was obtained from sources deemed reliable: however, no warranty is made to the accuracy there of.



Suite 110: 836 SF



Suite 111: 1,277 SF





# Aerial View

