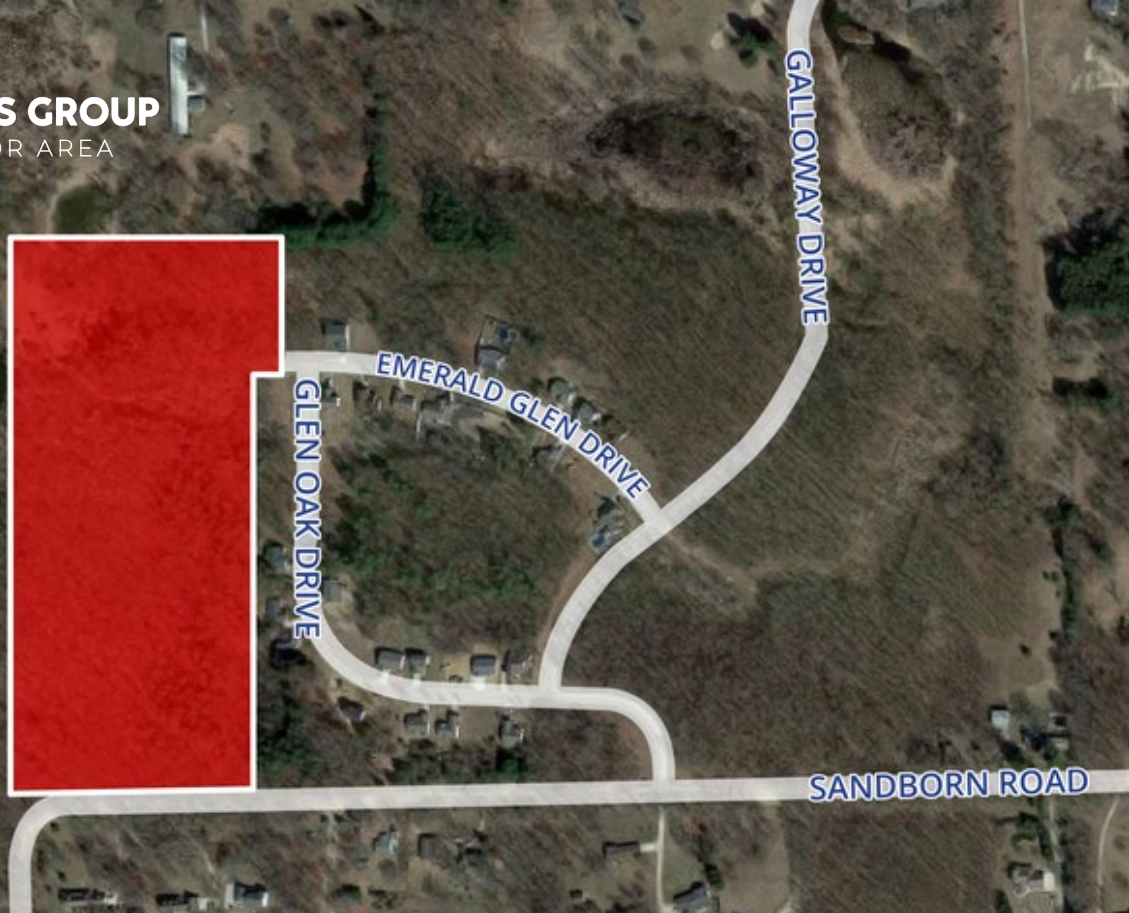




CHACONAS GROUP
ANN ARBOR AREA



Asking Price:

\$560,000

FOR SALE

Sandborn Road Manchester, MI

18.27 Acres Available

Property Highlights

- 18.27-Acre Site in Thriving Washtenaw County Community
- Entitled to 26 Single-Family Residential Homes
- Phase 3 of Emerald Glen of Manchester Site Condo Development
- Pre-Engineered and Fully Approved by the Village of Manchester
- Ideal Blend of Topography, and Mature Trees
- Surrounded by Established Neighborhoods, Close to Downtown Manchester
- Excellent Opportunity for Residential Builders or Investors
- \$560,000

CONTACT US

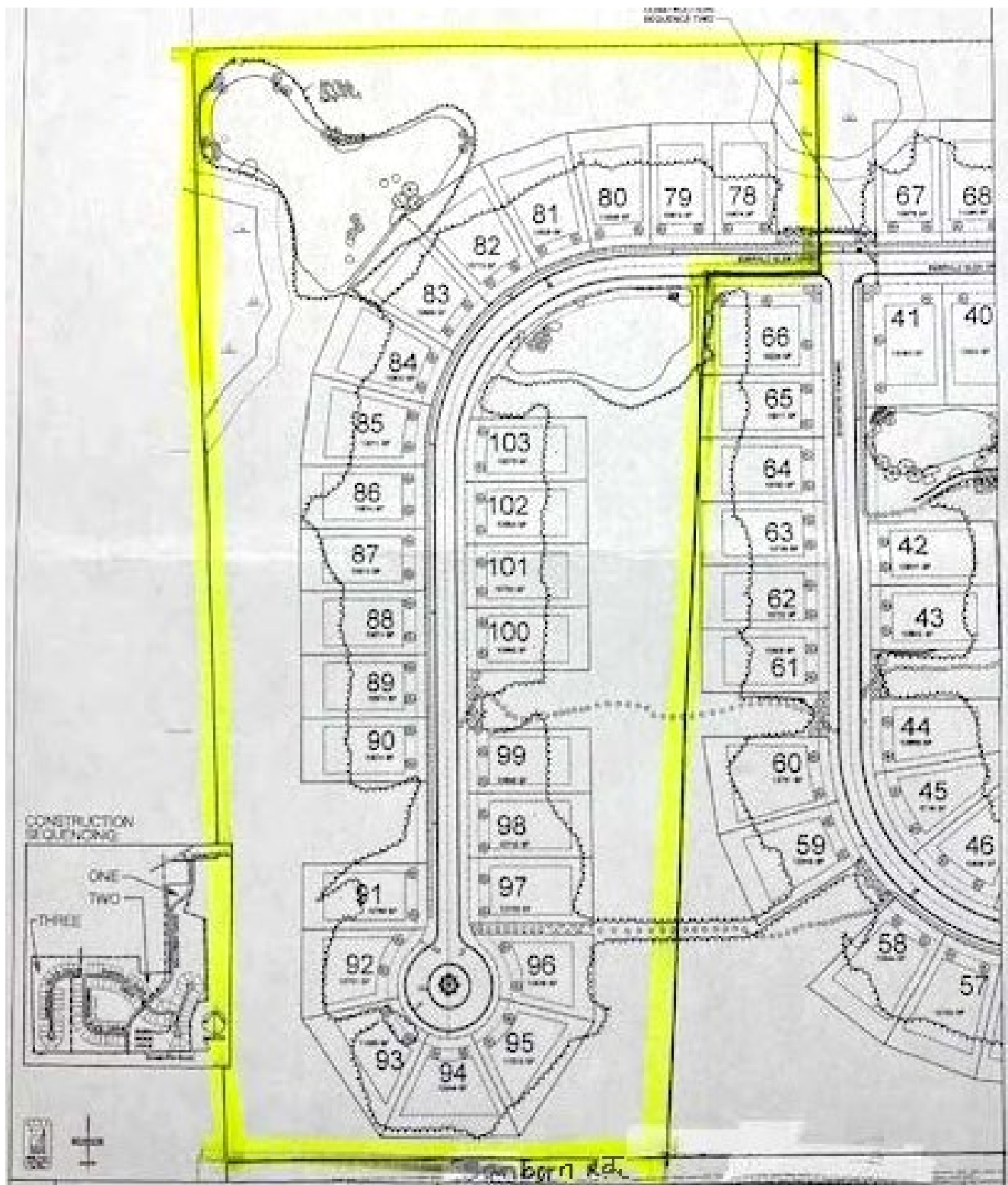
CHACONAS GROUP
ANN ARBOR AREA

734 994 3100
annarbor@colliers.com

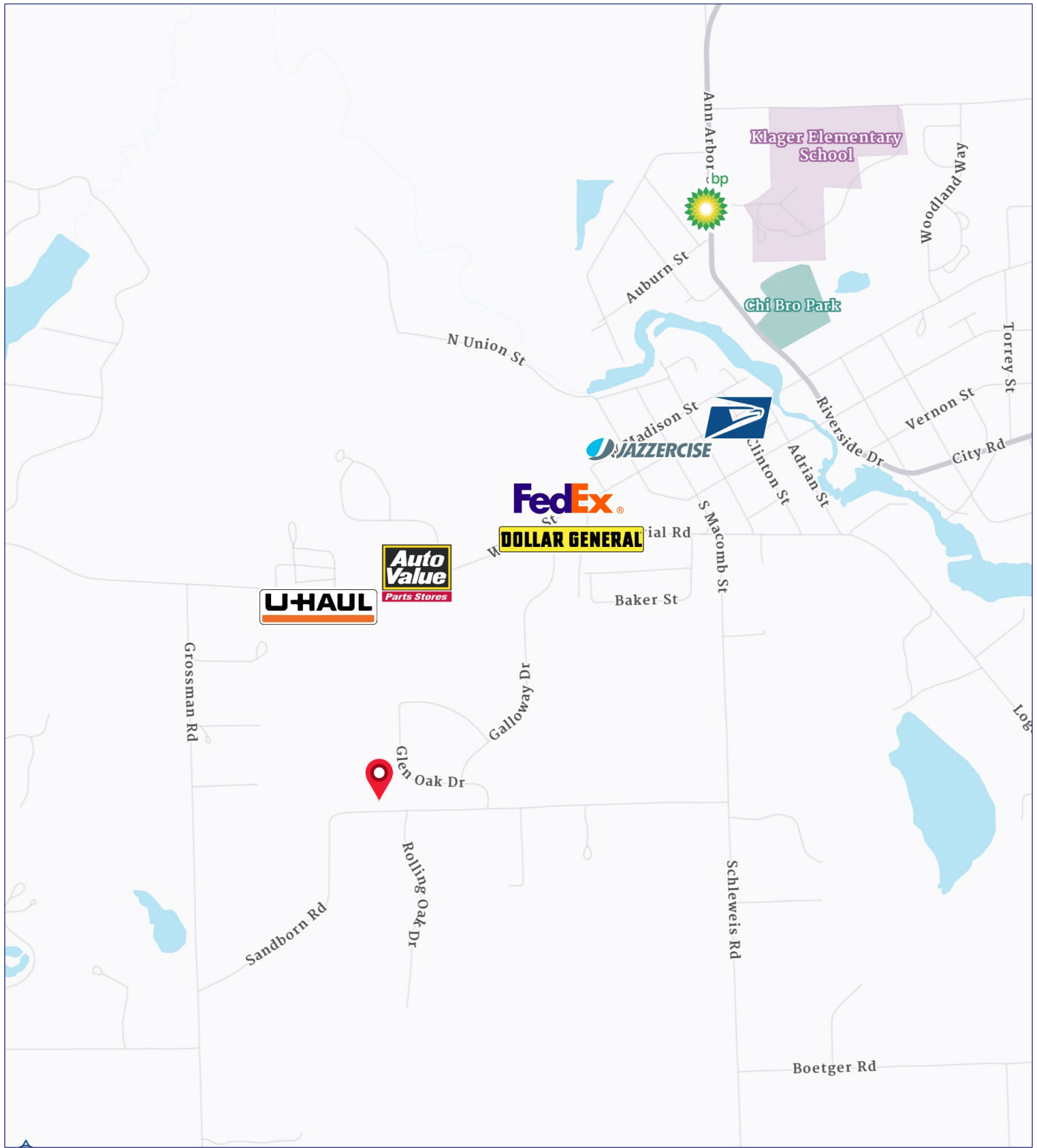
Colliers Ann Arbor
1955 Pauline Blvd, Suite 400
Ann Arbor, MI 48103
colliersannarbor.com



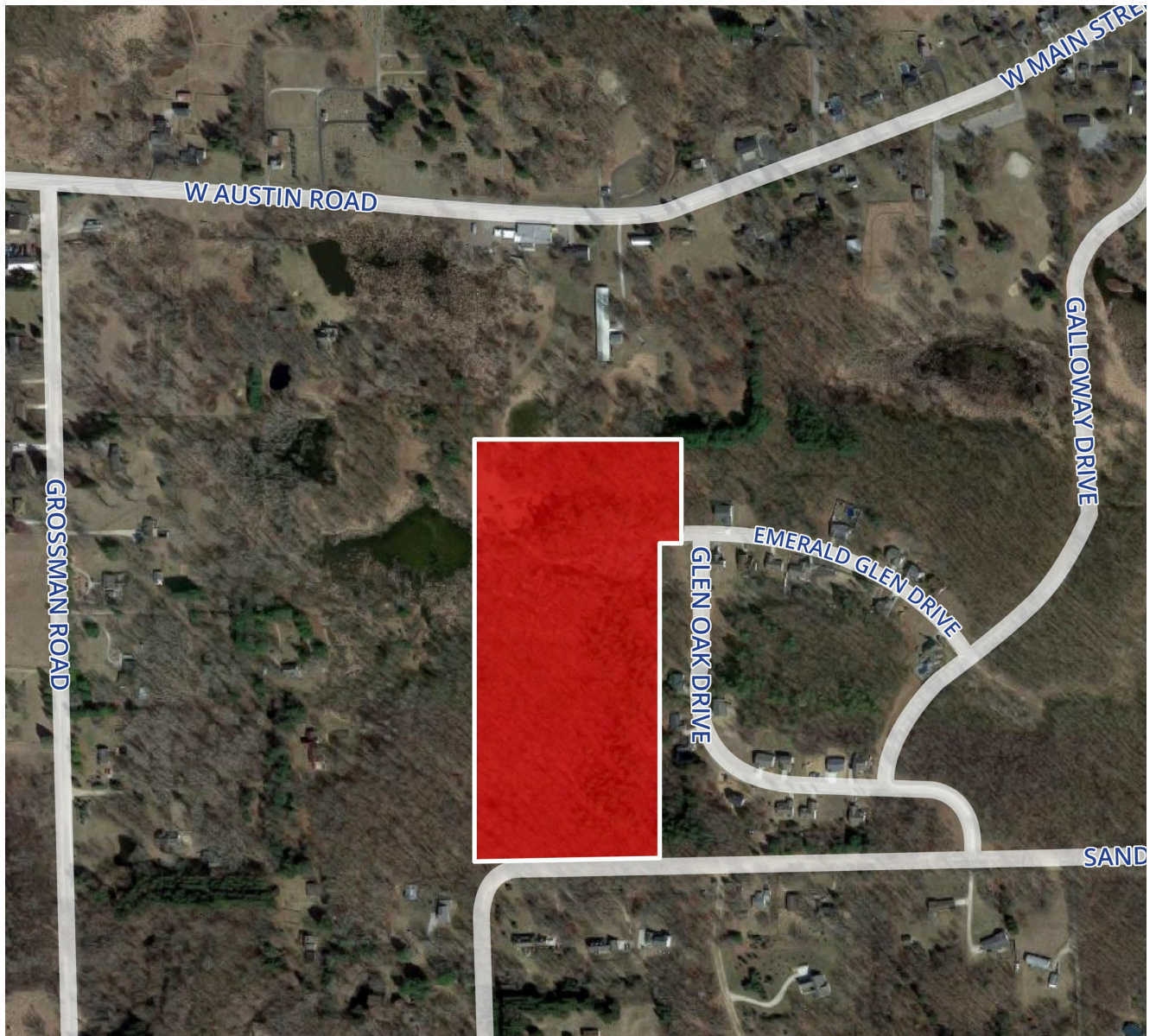
Site Plan – Sequence Three



Location Map



Aerial Map



*We have no reason to doubt the accuracy of information contained herein, but we cannot guarantee it.
All information should be verified prior to purchase and/or lease.*

Colliers Ann Arbor
734 994 3100
annarbor@colliers.com