

LEASE AVAILABILITY

561 Windsor Street, Somerville, MA 02143



LEE & ASSOCIATES



the hive

BOYNTON — YARDS

The Hive at 561 Windsor Street in Somerville, MA (The Taza Building) is a vibrant hub within the Boynton Yards neighborhood where entrepreneurs, artists, innovators, creatives, and advocates thrive, connecting and collaborating in a dynamic, supportive community of like-minded visionaries.



95,000 SF



**Spaces ranging from
500 - 13,000 SF**



4 Floors



On-Site Parking Available



**On-Site Property
Management**



**Shuttle service between
Boynton Yards & Kendall/
MIT Red Line MBTA Station**

The Hive at 561 Windsor Street, Somerville, MA cultivates creativity and celebrates diversity in the transformational Boynton Yards district. While some tenants of the building have called it their longtime home, many local artists and creators are new to the community - constantly molding, shaping & inspiring the neighborhood.





Union Square Station
5 Minutes






Bluebikes
1 Minute






Logan Airport
25 Minutes





8 Minutes



7 Minutes



20 Minutes







2nd Floor | Suite A200



12,798 RSF



58 Work Stations



10 Offices



4 Conference Rooms



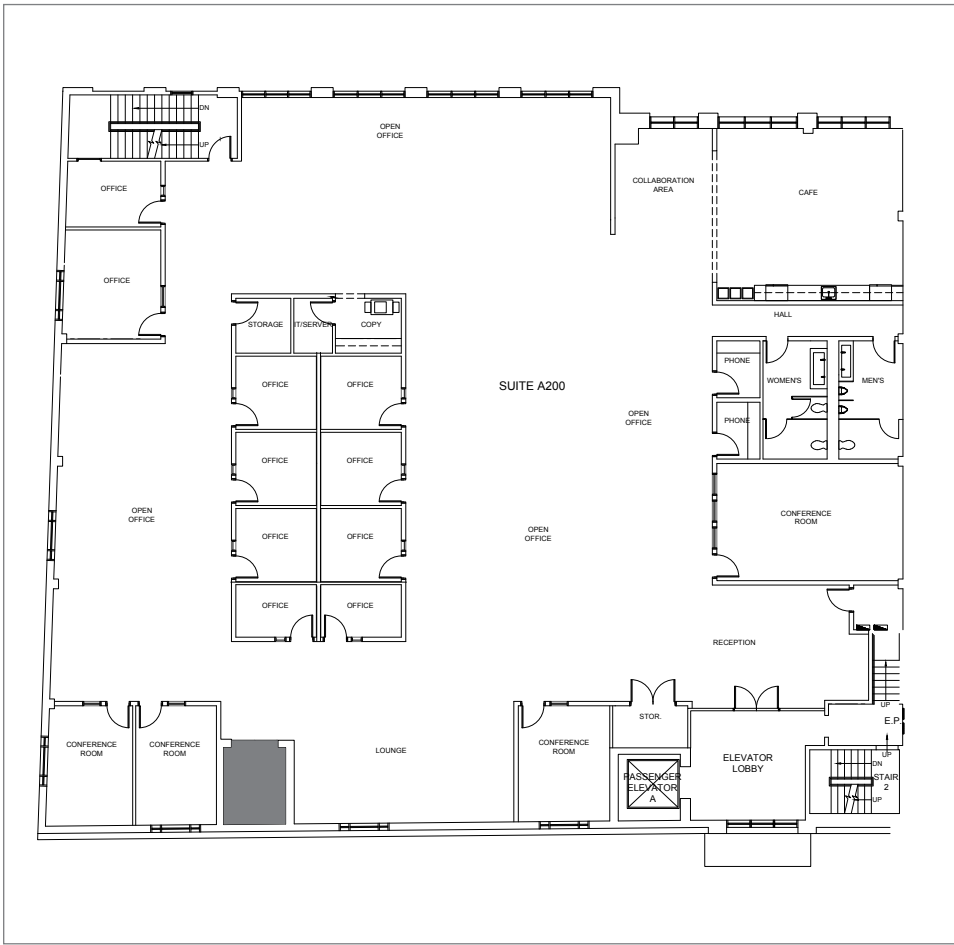
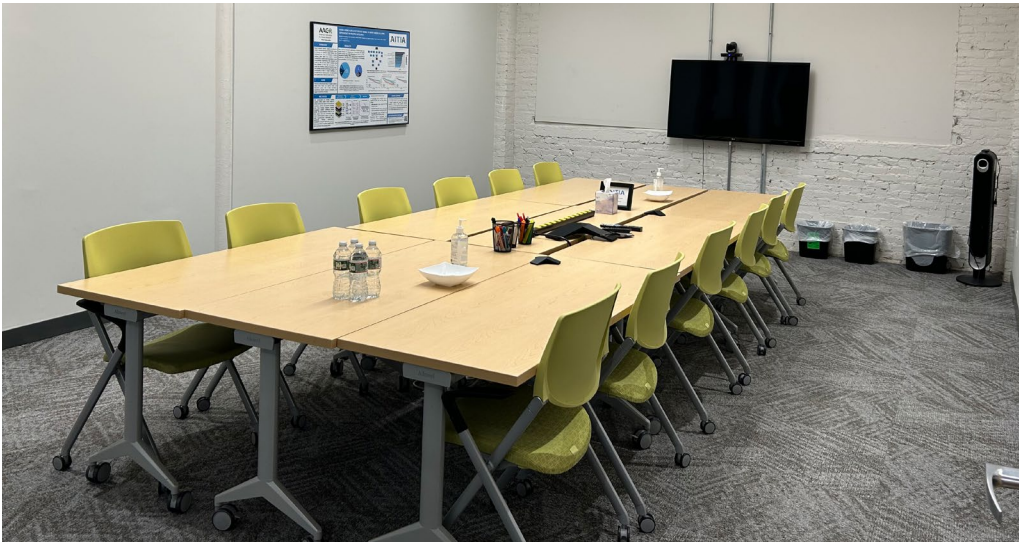
1 Cafe



Private Restrooms



18' Clear Height



2nd Floor | Suite B204



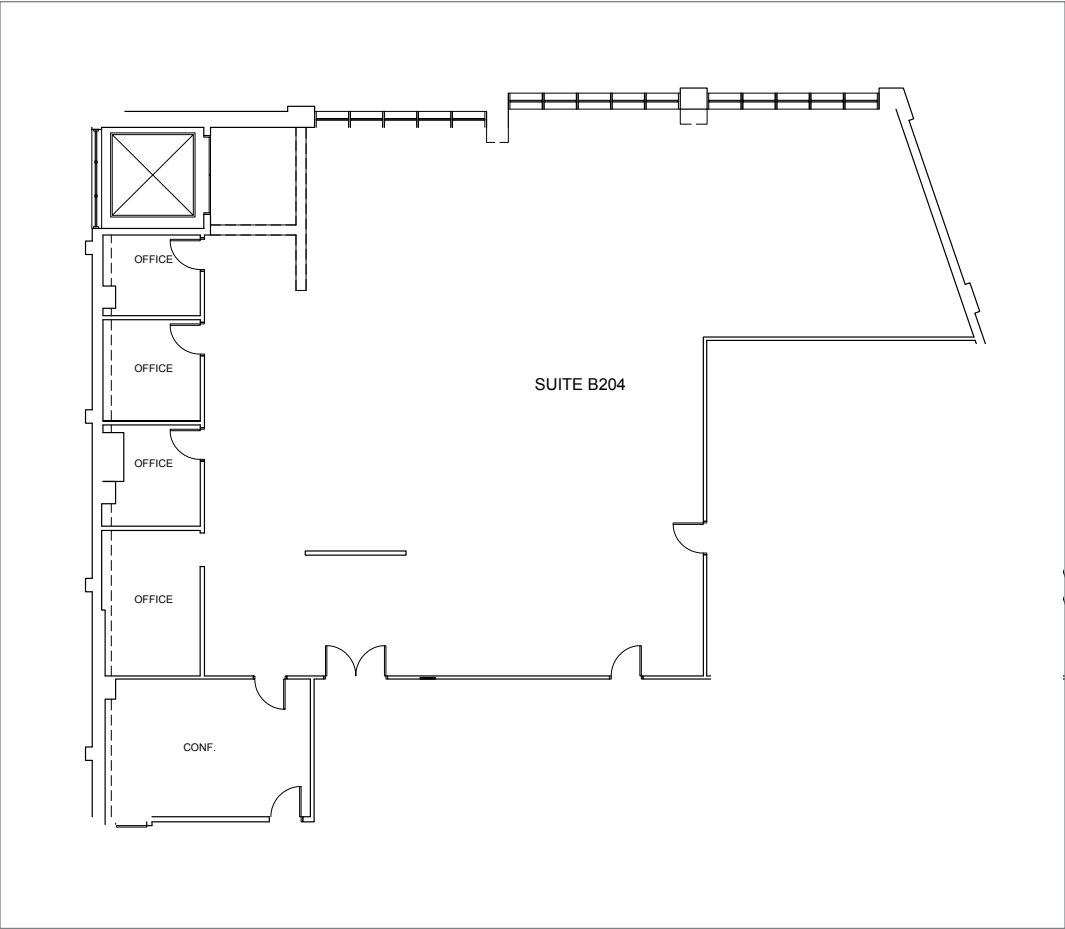
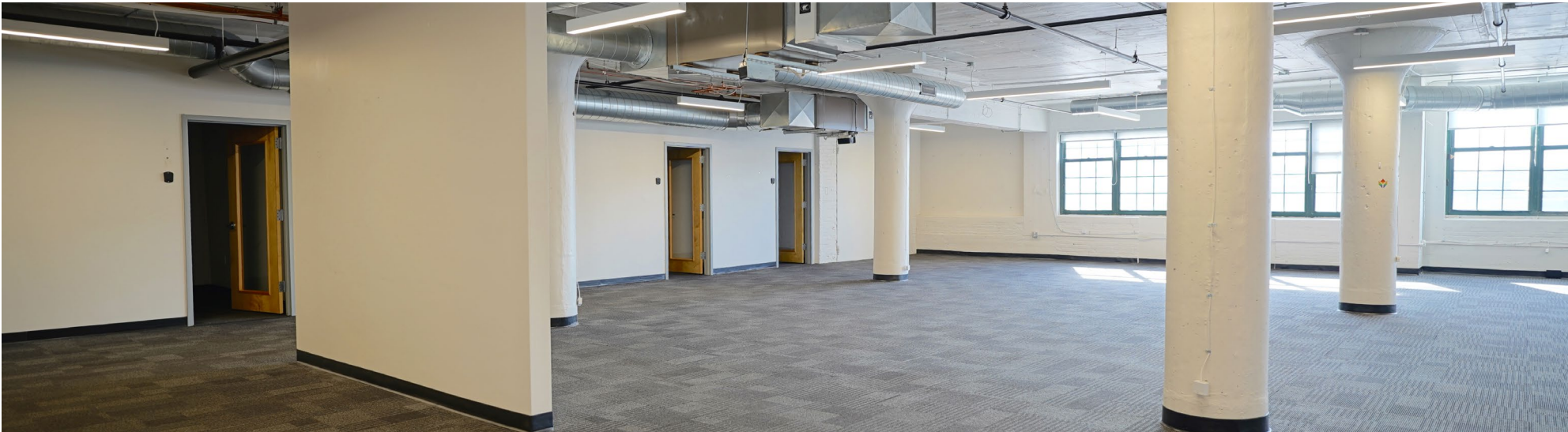
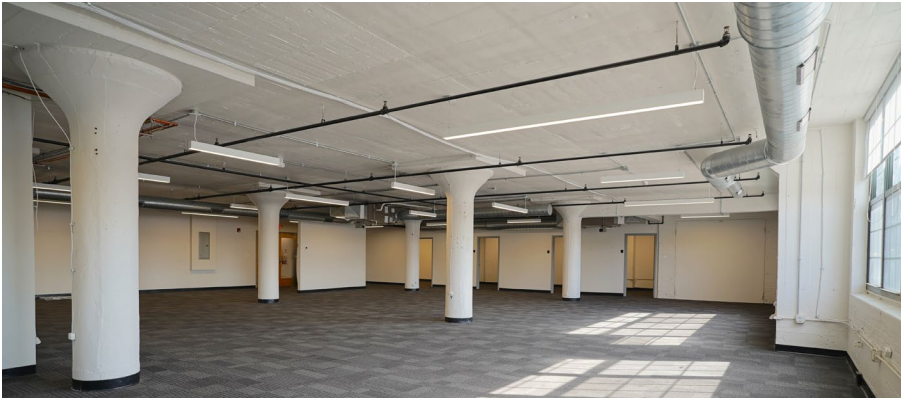
5,406 RSF



4 Offices



1 Conference Room



Mezzanine | Suite Bmz 3



5,406 RSF



2 Offices



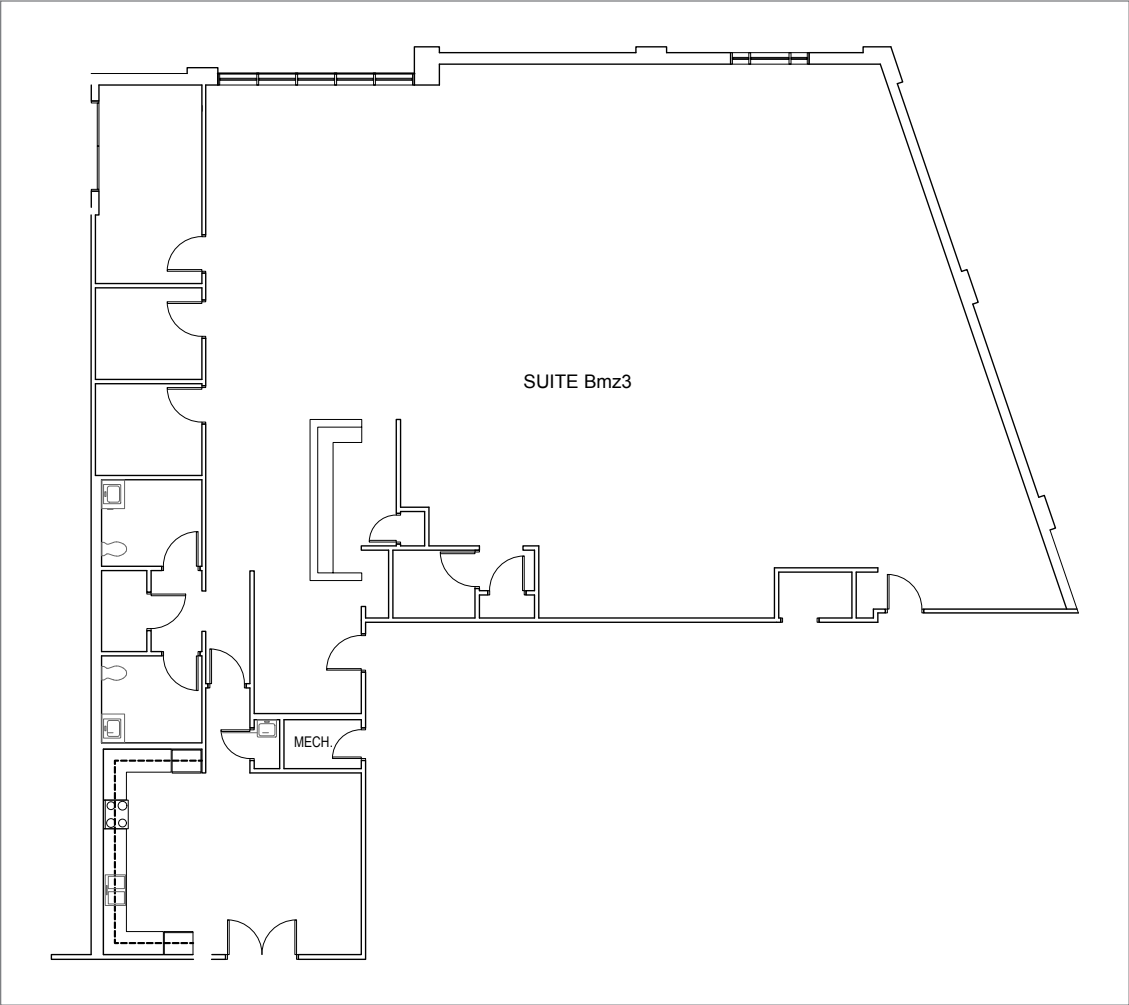
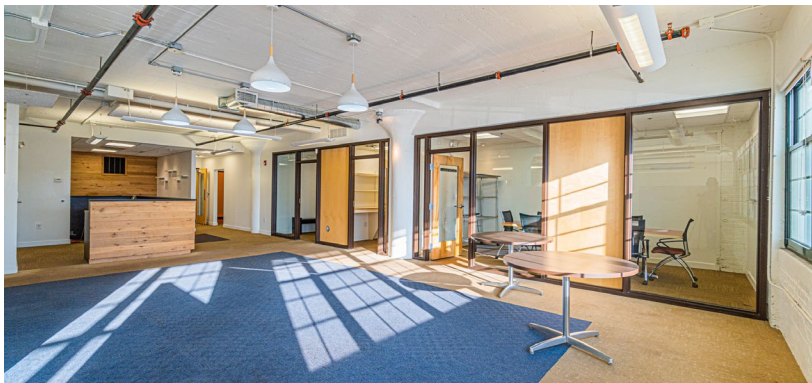
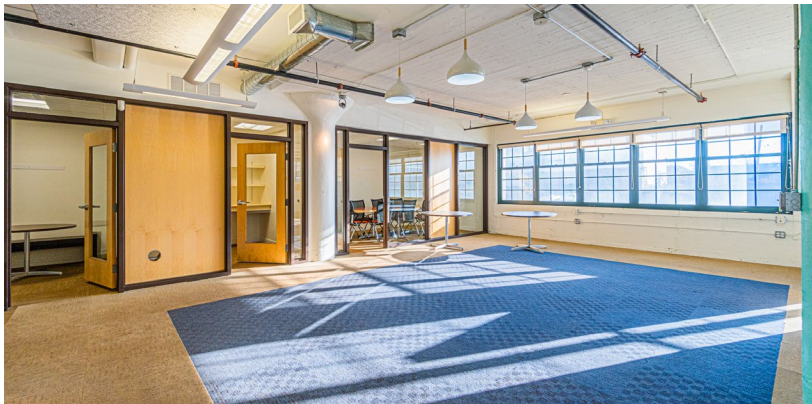
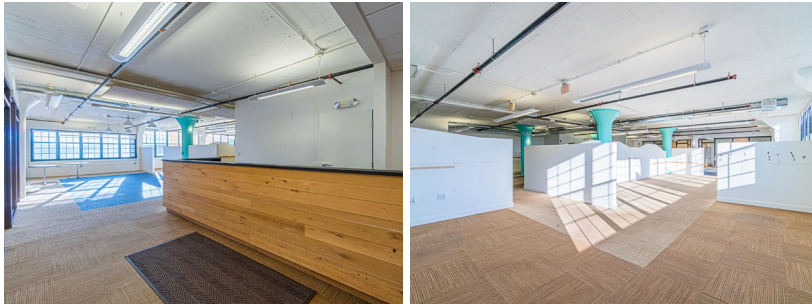
1 Conference Room



1 Full Kitchen



2 Restrooms



3rd Floor | Suite B302



7,140 RSF



3 Offices



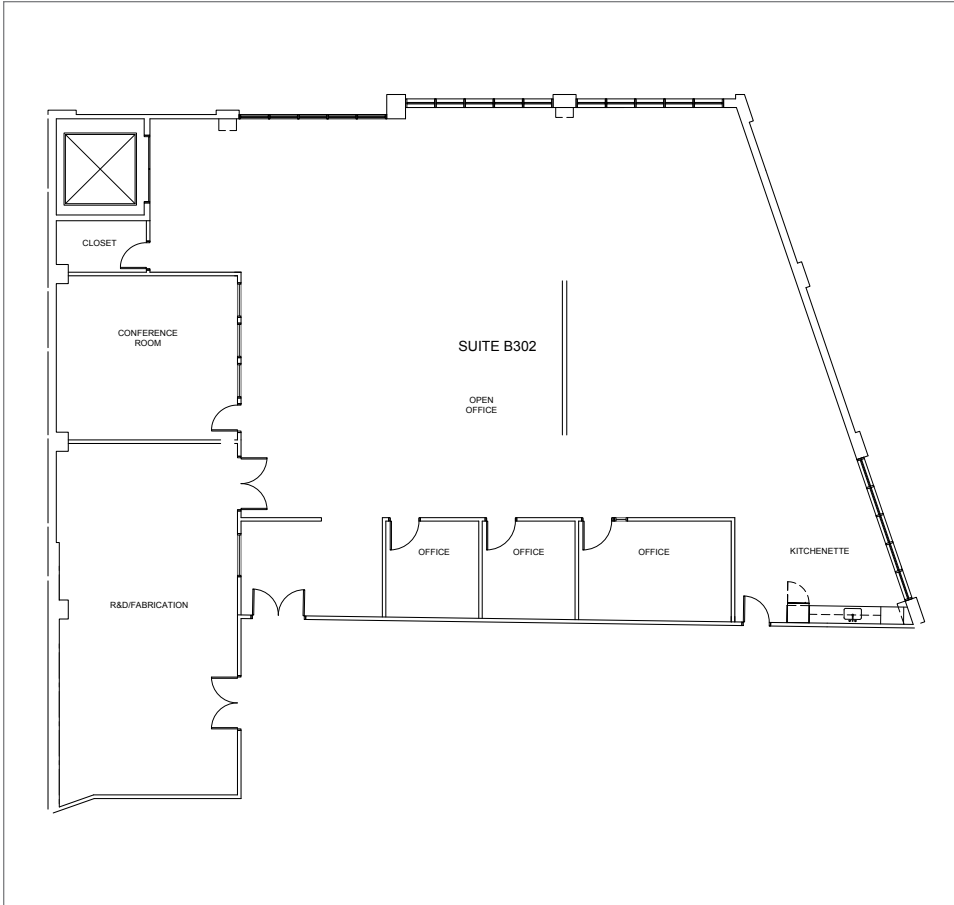
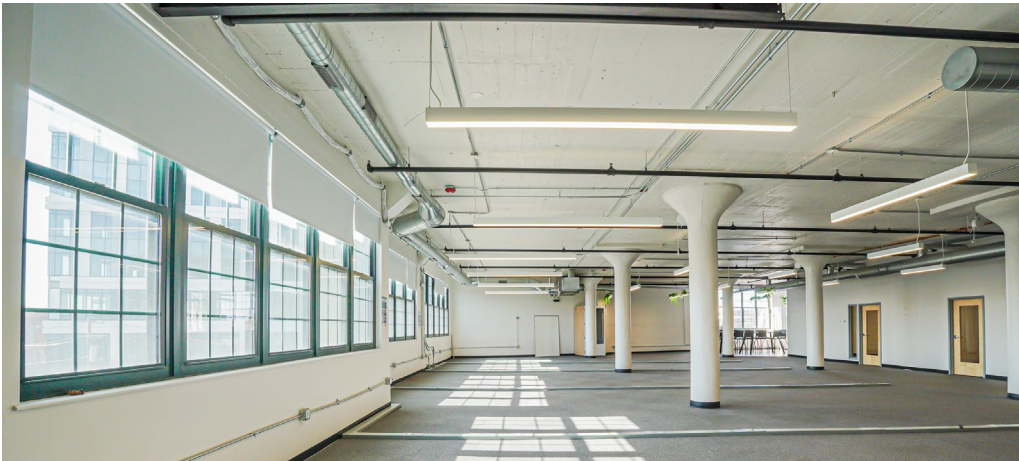
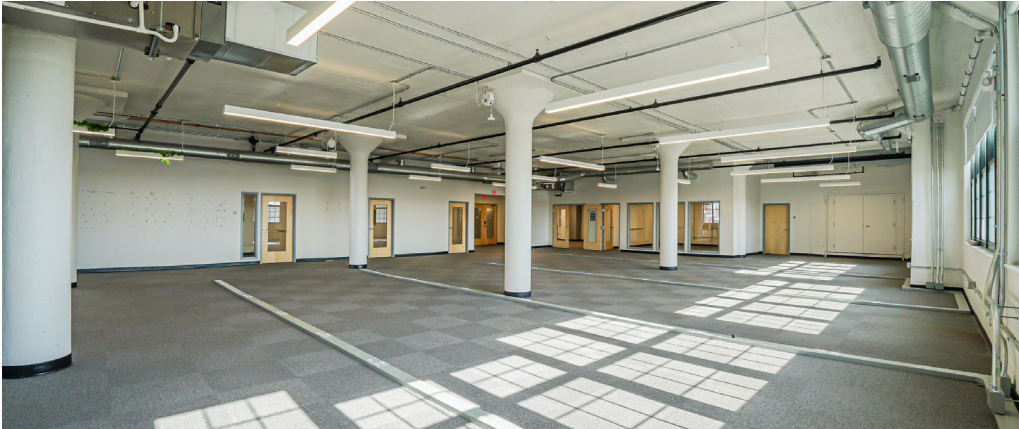
2 Conference Rooms



1 Full Kitchen



2 IT/Storage Closets



4th Floor | Suite A402



4,463 RSF



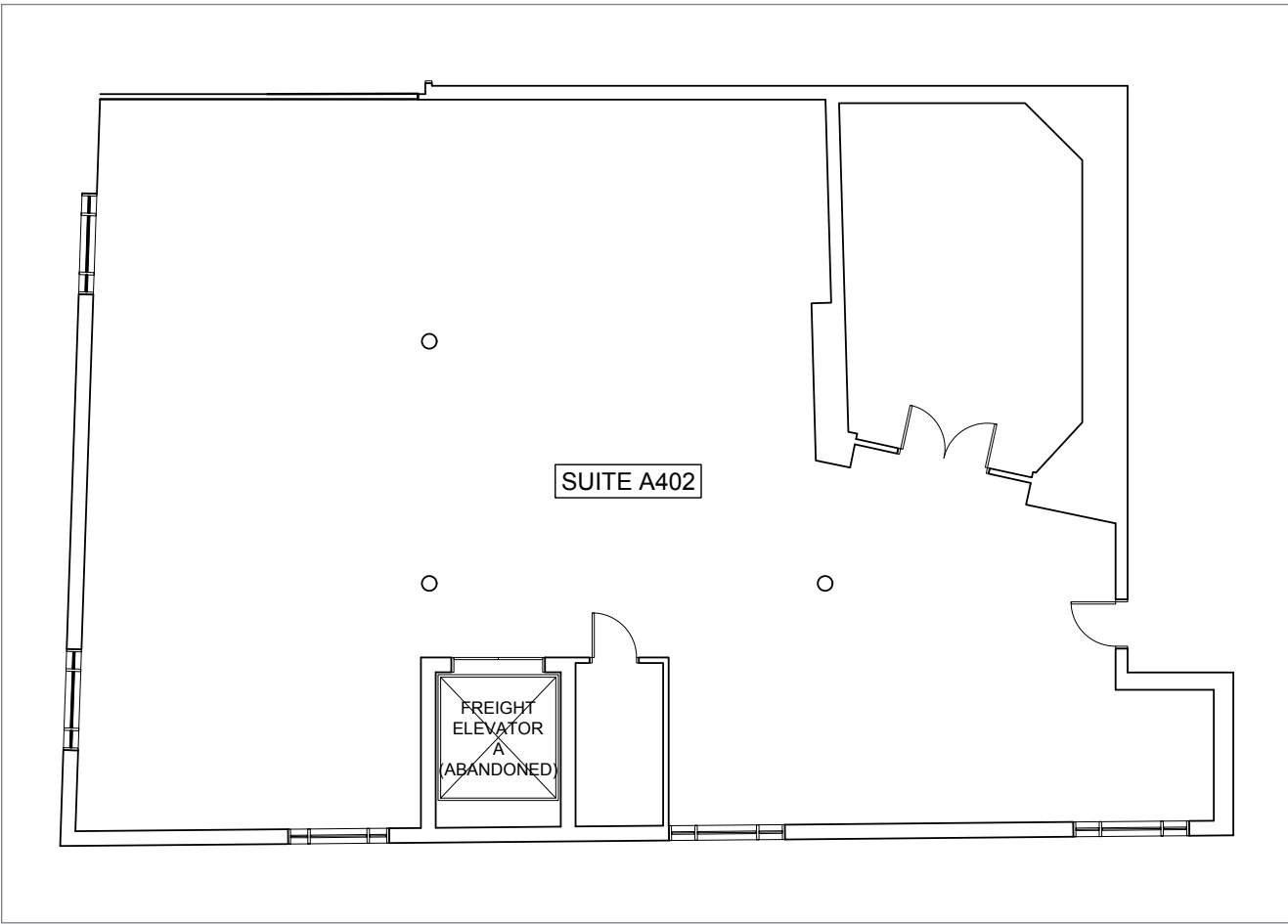
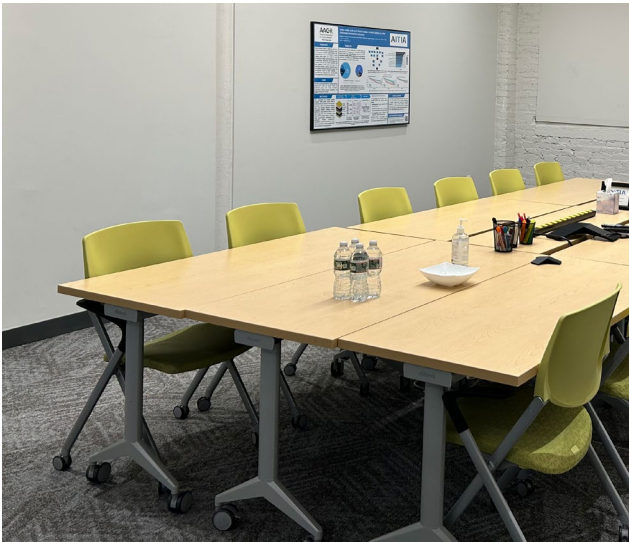
±25 Work Stations



1 Conference Room



1 Kitchenette

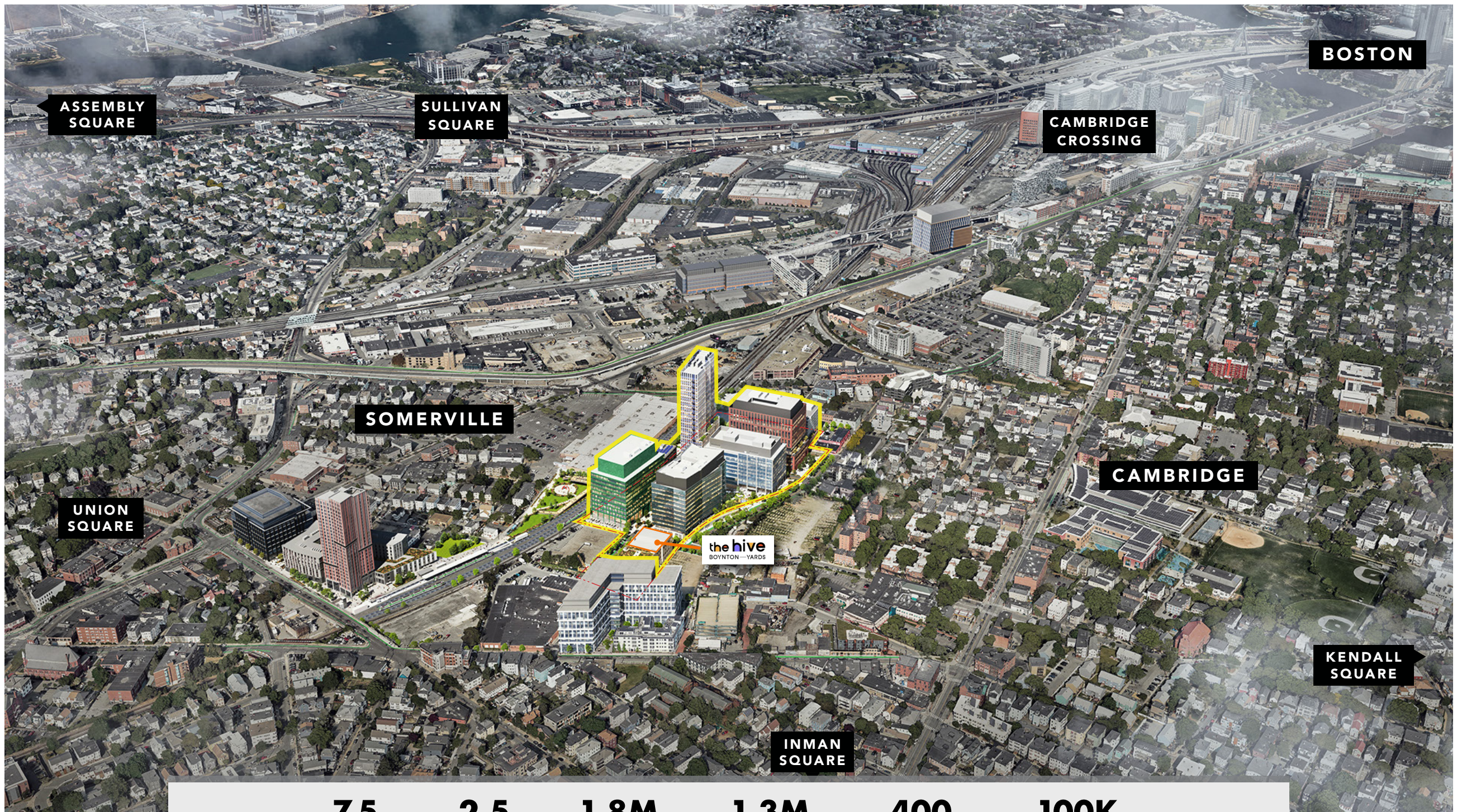


the hive

BOYNTON — YARDS

The Hive is located within Boynton Yards, an innovative mixed-use development located within the Kendall Square Mile.





BOSTON

ASSEMBLY
SQUARE

SULLIVAN
SQUARE

CAMBRIDGE
CROSSING

SOMERVILLE

UNION
SQUARE

CAMBRIDGE

KENDALL
SQUARE

INMAN
SQUARE

the hive
BOYNTON—YARDS

7.5
TOTAL
ACRES

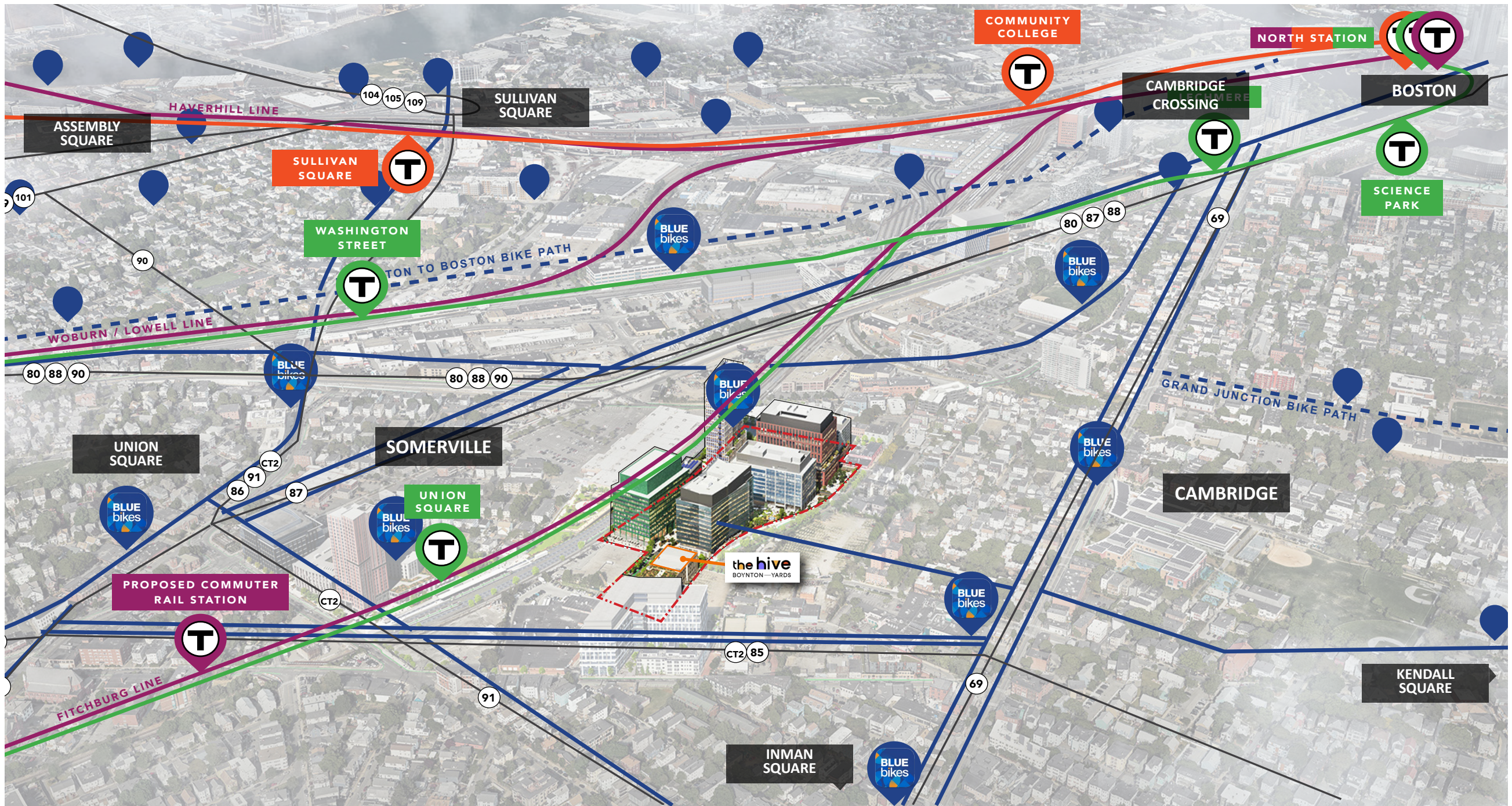
2.5
ACRES OF
OPEN SPACE

1.8M
SF APPROVED
MASTER PLANNED
DEVELOPMENT

1.3M
SF BEST-IN-CLASS
LAB/OFFICE SPACE

400
CUTTING-EDGE
RESIDENTIAL UNITS

100K
SF CREATIVE
ARTS BUILDING



DEDICATED BIKE PATH
PROTECTED BIKE LANES



BLUE BIKES STATION
WITHIN 5 MIN RIDE
BLUE BIKES STATION



— 69 — BUS LINE



GREEN LINE

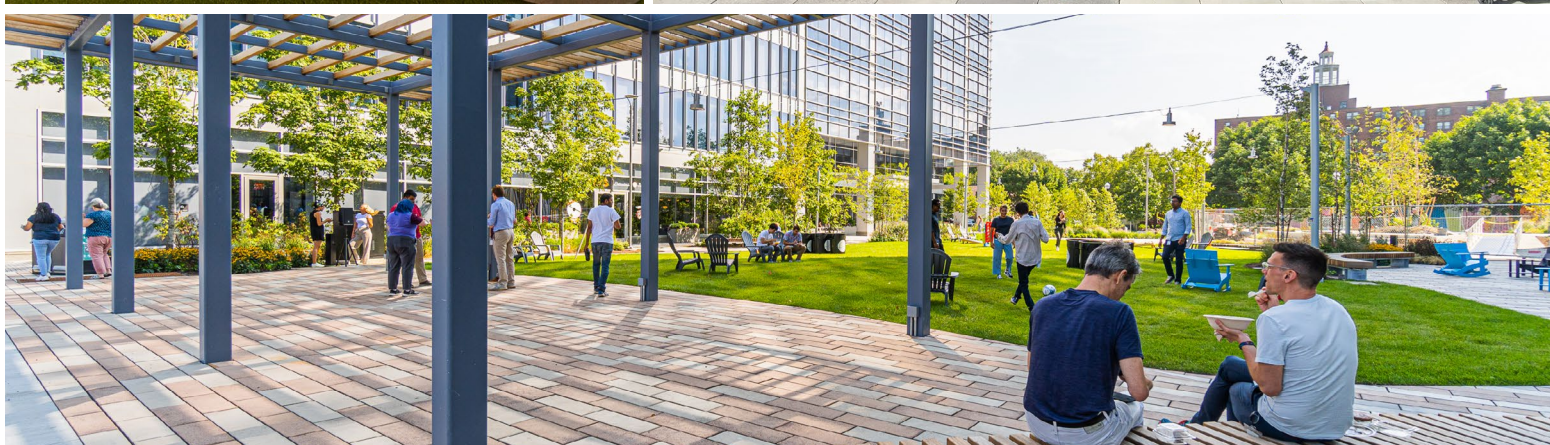
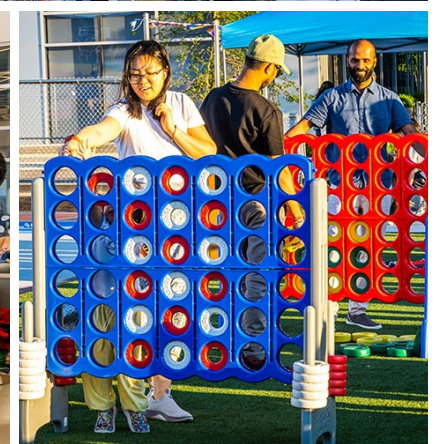
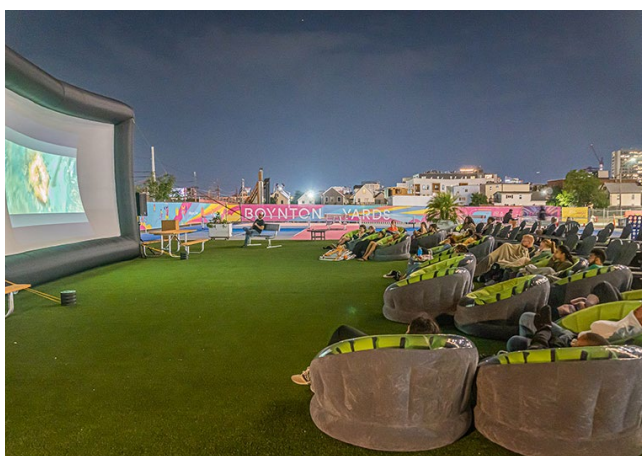


ORANGE LINE



COMMUTER RAIL

AMENITIES





BOYNTON YARDS



boyntonyards.com



@boynton_yards

WHERE
SCIENCE + *Culture*
MERGE

For leasing information, please contact:

Stephanie Deering

Director

sdeering@lee-associates.com

781.608.5964

Scott Richmond

Principal

srichmond@lee-associates.com

617.733.1504

All information furnished regarding property for sale, rental or financing is from sources deemed reliable, but no warranty or representation is made to the accuracy thereof and same is submitted to errors, omissions, change of price, rental or other conditions prior to sale, lease or financing or withdrawal without notice. No liability of any kind is to be imposed on the broker herein.



211 Congress Street
Boston, MA 02110
lee-associates.com/boston