

RETAIL/FLEX OPPORTUNITY

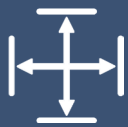


The former Ohio Station Outlets, conveniently located in Lodi, OH, with direct access off I-71 and Avon Lake Rd., is undergoing a complete transformation and redevelopment into a thriving business park. Offering a combination of flexible units for light industrial, office, and tech use, with various sizes available. The facilities will feature docks and drive-ins to suit, capable of accommodating large user configurations.

A Redevelopment By
 **Industrial**
COMMERCIAL PROPERTIES
Transforming the shape of business.

HIGHWAY VISIBILITY & IMMEDIATE ACCESSIBILITY, NO INCOME TAX IN HARRISVILLE TOWNSHIP

Features



2,880 SF building



12' vaulted ceiling



Abundant parking



Prominent signage

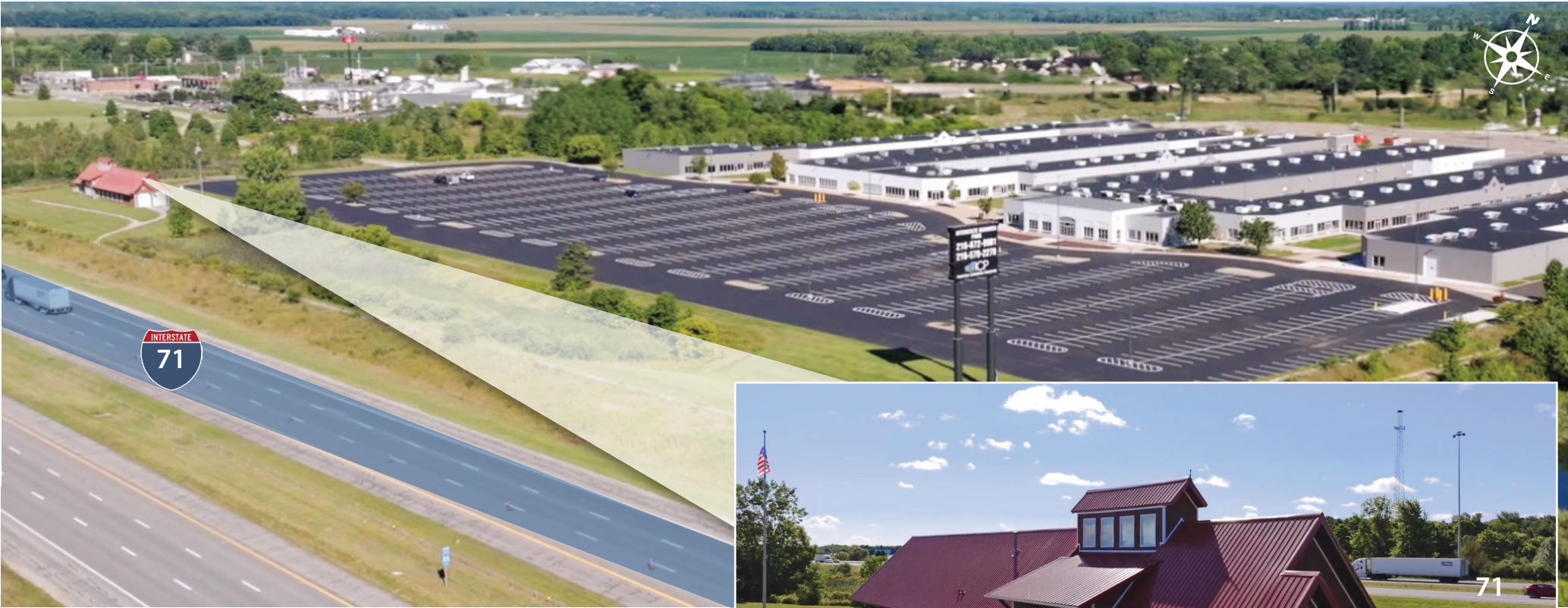


Highway visibility & access



4 Drive-In Doors





Distance to	Miles	Drivetime
Akron Canton Airport, OH	38	40 min
Downtown Akron, OH	30	30 min
Canton, OH	47	50 min
Downtown Cleveland, OH	48	50 min
CLE Hopkins Airport, OH	36	40 min
Columbus, OH	95	1.5 hrs
Mansfield, OH	35	40 min
Youngstown, OH	77	1.15 min
Pittsburgh, PA	137	2.15 hrs
Sandusky, OH	59	1.25 min



Lodi, Ohio, is located in Medina County, just minutes from the I-76/I-71 interchange, which is known as the busiest interchange east of the Mississippi River. In addition to these interstates, U.S. Route 224 and U.S. Route 42 are only a 4-minute drive away, making commuting by car very convenient. Situated 30 minutes from Akron and 50 minutes from Cleveland, Lodi is a small town that offers many of the conveniences of larger cities. For major travel, both the Cleveland-Hopkins International Airport and the Akron-Canton Regional Airport can be reached within a 42-minute drive.

Austin Semarjian 216.570.2270 | asemarjian@icpllc.com

Liam Childs 216.672.9981 | lchilds@icpllc.com