

Office / Retail Historic Downtown Selma

101 S Raiford Street, Suite 100
Selma, NC 27576





TABLE OF CONTENTS

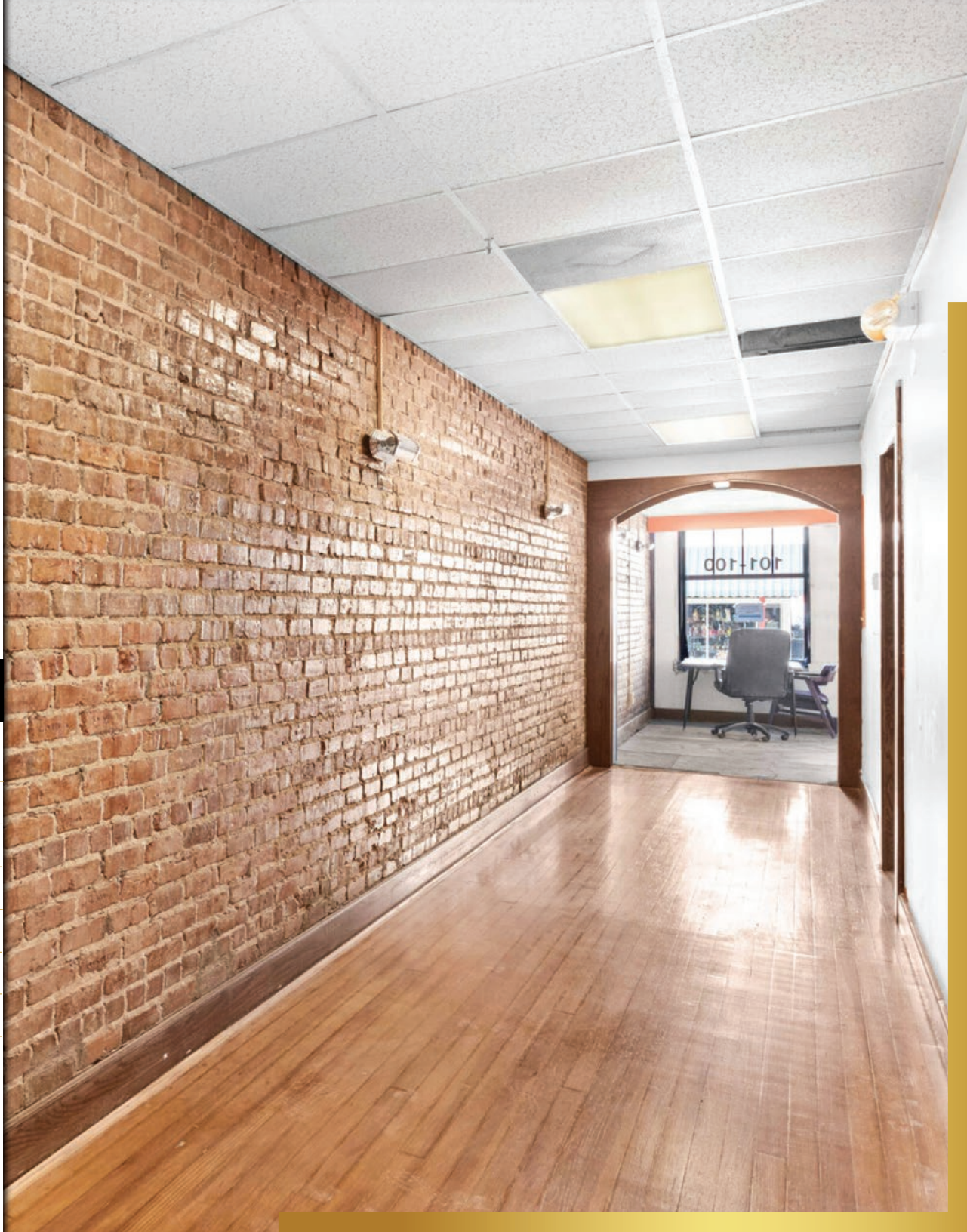
- 3** Property Highlights
- 4** Parcel Map
- 5** Floor Plan
- 6** Property Photos
- 7** Area Map
- 8** Aerial
- 9** Amenities Map
- 10** Market Overview
- 11** Demographic Overview

KEY HIGHLIGHTS

- Charming, historical location minutes from many of North Carolina's most notable development projects
- Close proximity to projects along I-95 corridor
- Abundance of natural lighting
- TIA is available and negotiable

PROPERTY HIGHLIGHTS

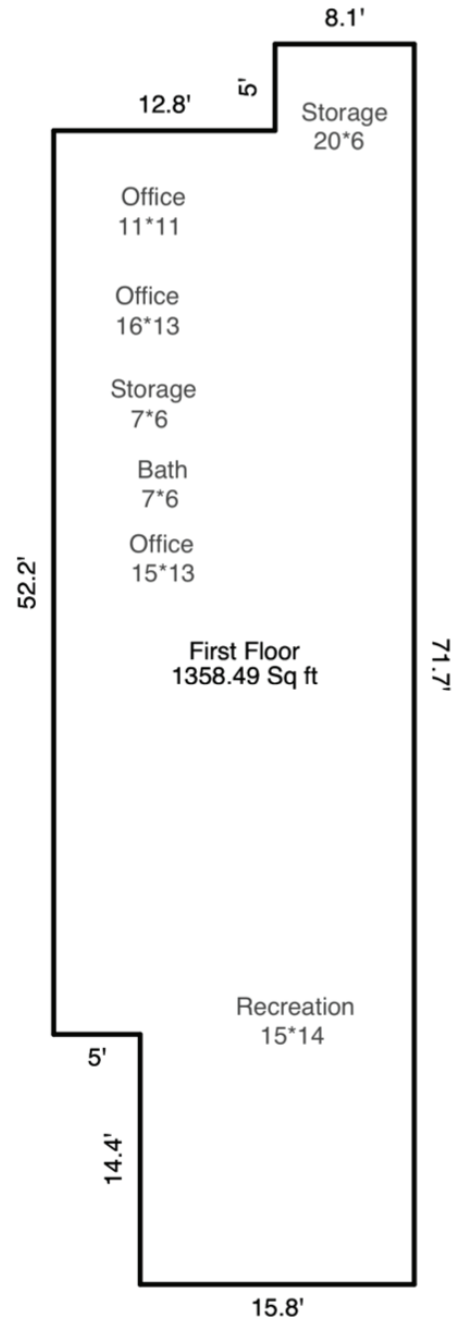
Lease Rate	\$13 per SF yearly NNN
Lease Term	5 year term
Lease Start	Negotiable
TI-CAM	\$1.50/SF
Total SF	1,358
Use	Office or Retail
Zoning	GC
Building Class	Class B

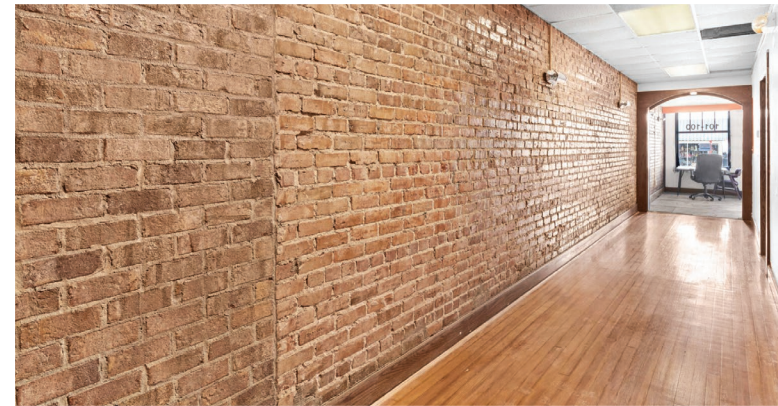
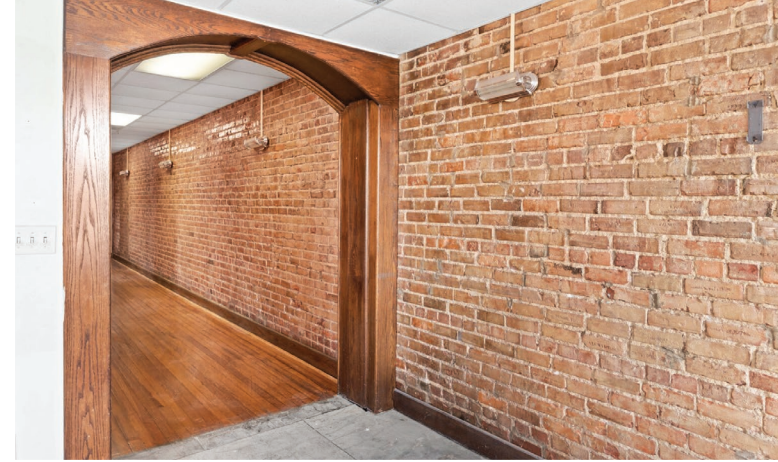


PARCEL MAP

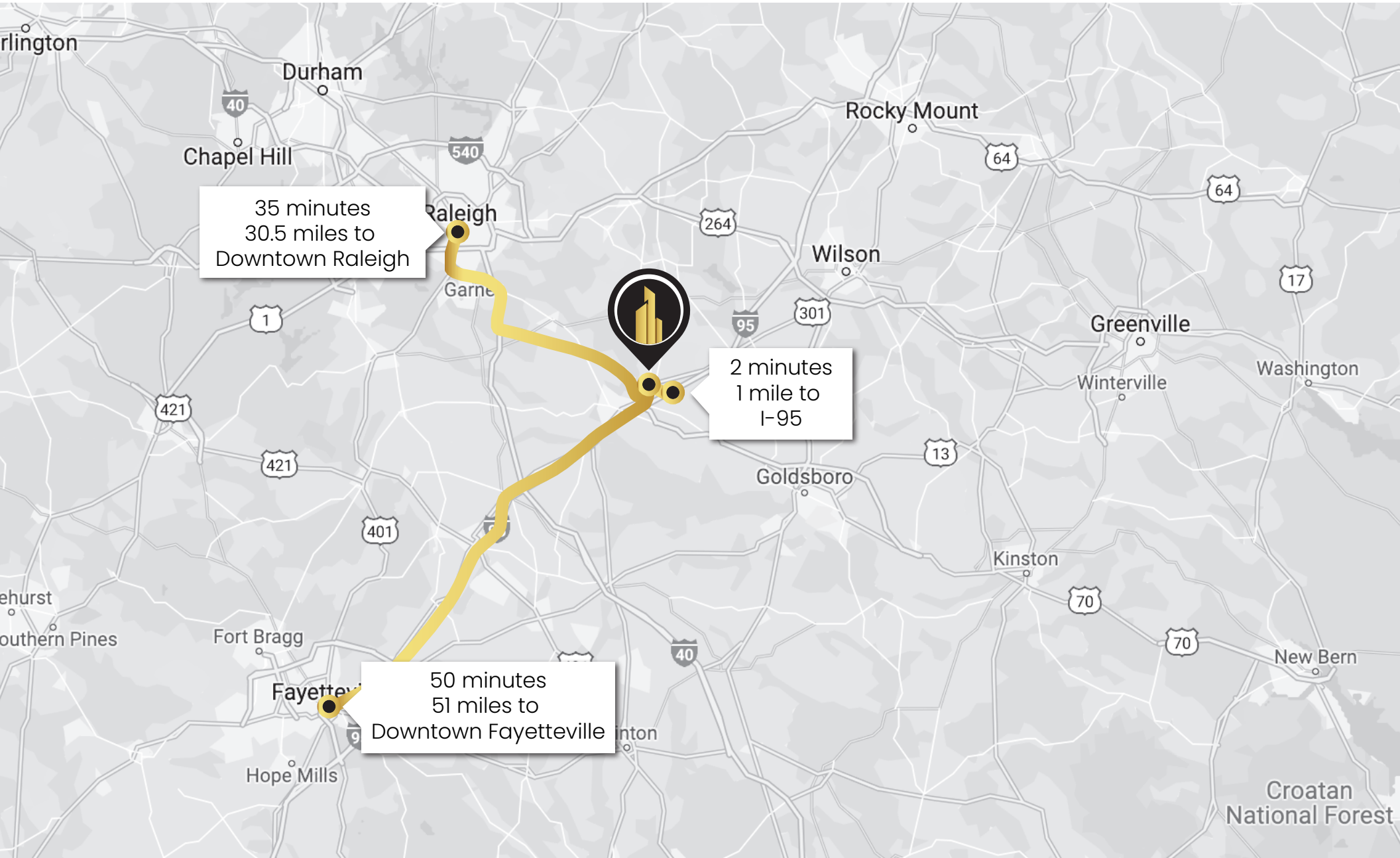


FLOOR PLAN





AREA MAP



AERIAL LOOKING NORTH



Pollock St

Raiford St

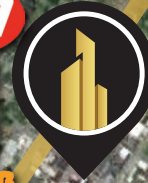
Waddell St

Anderson St

Dr M.L.K. Jr. Way



SELMA ELEMENTARY SCHOOL



SELMA NC



Selma is a town in Johnston County, North Carolina and is part of the Raleigh-Durham-Cary Combined Statistical Area. The area has a population over 1.7 million residents, though the town of Selma is able to maintain its rural character. Selma is bordered to the southwest by Smithfield, the county seat, and to the northwest by Wilson's Mills.

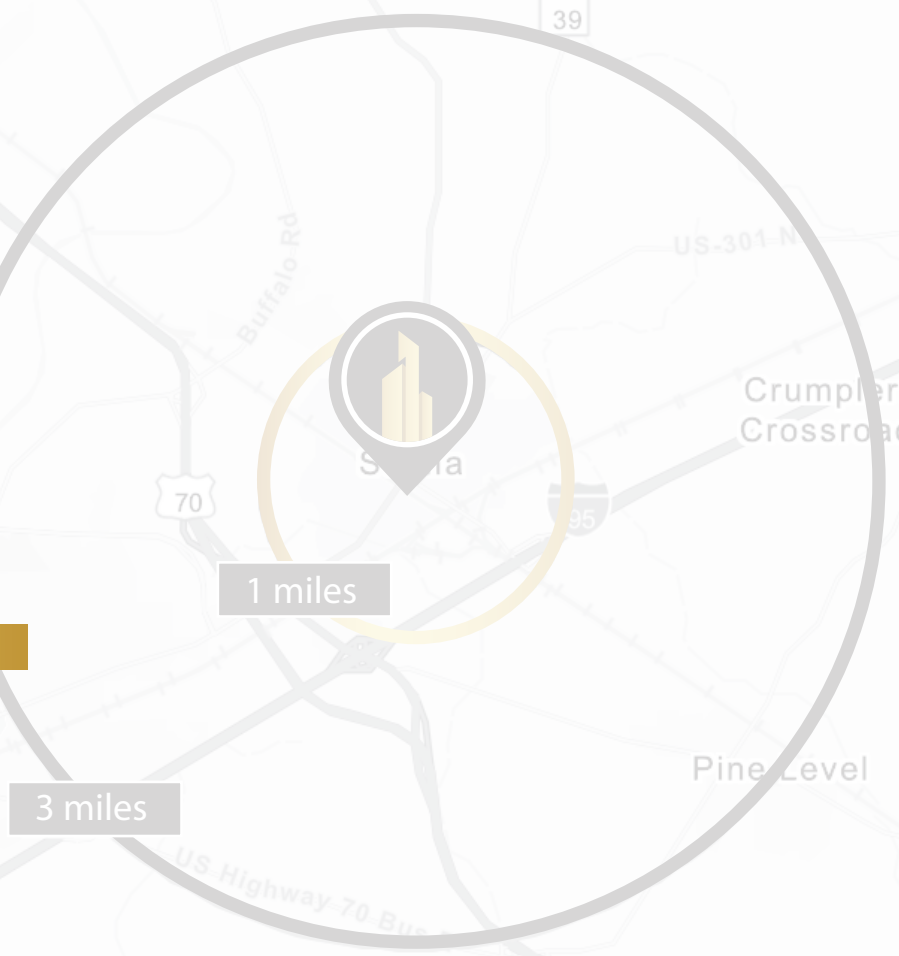
On May 1, 1867, lots were sold around a newly established station on the North Carolina Railroad. From those lots, the town was built and considered a railroad town for many decades. Selma was officially chartered as a town on February 11, 1873. The town recently renovated its 1924 passenger depot, which has Amtrak service. The town is also home to the Mitchener Station, which was built in 1855 and is thought to be the oldest surviving train station in North Carolina. After Interstate 95 was built in the late 1950s, the town experienced growth due to its location next to the interstate. Today, there are many hotels and restaurants located in the area thanks to the traffic from I-95.

The town enjoys easy access to I-95 and US Route 301 and is just 30 miles to Raleigh. Amtrak passenger trains stop at the historic Selma Union Dept and offers service to Charlotte, New York City, Savannah, and intermediate points. The Johnston County Area Transit System (JCATS) is a coordinated transit system that provides transportation services in Selma and throughout Johnston County.

DEMOGRAPHIC OVERVIEW

2021 Summary	1 Mile	3 Miles	5 Miles
Population	5,340	12,833	28,686
Households	2,020	4,720	10,781
Families	1,276	3,008	6,869
Average Household Size	2.64	2.66	2.56
Owner Occupied Housing Units	918	2,561	6,284
Renter Occupied Housing Units	1,102	2,158	4,497
Median Age	34.5	37.2	38.6
Median Household Income	\$27,068	\$37,258	\$39,039
Average Household Income	\$38,419	\$54,042	\$55,633

2026 Summary	1 Mile	3 Mile	5 Mile
Population	5,692	13,866	30,957
Households	2,147	5,095	11,629
Families	1,348	3,225	7,364
Average Household Size	2.65	2.67	2.57
Owner Occupied Housing Units	988	2,838	6,915
Renter Occupied Housing Units	1,159	2,258	4,714
Median Age	35.1	37.8	39.3
Median Household Income	\$31,632	\$40,640	\$43,287
Average Household Income	\$43,678	\$61,964	\$63,800



CONTACT

Evan Sassaman
Evan@cityplat.com
717.215.4507

CityPlat
www.cityplat.com
919.650.2643

107 Fayetteville St
Raleigh, NC 27601

CONFIDENTIALITY DISCLAIMER

The information contained in this Offering Memorandum is proprietary and strictly confidential. It is intended to be reviewed only by the party(ies) receiving it from CityPlat, LLC and should not be made available to any other person or entity without the written consent of CityPlat, LLC. If you are not the intended recipient, you are hereby notified that any retention, dissemination, duplication, forwarding, copying or taking any action in reliance on the contents of this information is strictly prohibited. If you receive this Offering Memorandum in error, whether in electronic or printed form, please notify the sender and destroy the document.

This Offering has been prepared to provide a summary of unverified information to prospective purchasers, and to establish only a preliminary level of interest in the subject property. The information contained herein is not a substitute for a thorough due diligence investigation.

CityPlat, LLC has not made any investigation, and makes no warranty or representation, with respect to the income or expenses for the subject property, the future projected financial performance of the property, the size and square footage of the property and improvements, the presence or absence of contaminating substances, PCB's or asbestos, the compliance with state and federal regulations, the physical condition of the improvements thereon, or the financial condition or business prospects of any tenant, or any tenant's plans or intentions to continue its occupancy of the subject property.

The information contained in this Offering has been obtained from sources we believe are reliable; however, CityPlat, LLC has not verified, and will not verify, any of the information contained herein, nor has CityPlat, LLC conducted any investigation regarding these matters and makes no warranty or representation whatsoever regarding the accuracy or completeness of the information provided.