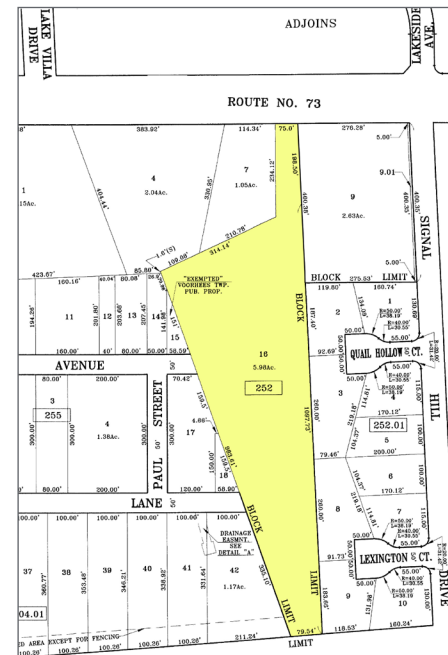


116 Route 73

Voorhees, New Jersey

Property Description

- 6± acre site for sale
- 75± ft. frontage on Rt. 73
- Traffic Count - 41,472 VPD
- Block 252; Lot 16
- Taxes (2023): \$16,777.98
- Gas, electric, city water
- Septic system
- Zoned MB - Major Business



For more information:

Julie Kronfeld, SIOR

+1 856 802 6516

julie.kronfeld@naimertz.com

Rebecca Ting, SIOR

+1 856 234 9600

rebecca.ting@naimertz.com

Demographics

	1 mi	3 mi	5 mi
Population	5,415	47,480	154,402
Households	1,757	17,479	59,053
Median Household Income	\$188,970	\$103,731	\$94,711

116 Route 73

Voorhees, New Jersey

Location Information

- Located on heavily traveled Route 73 near the corner of Signal Hill Drive
- Less than 1 mile to Virtua Voorhees' healthcare campus
- Less than 1 mile to the Cedar Hill Shopping Center, a retail Power Center with BJ's, Lowe's and Michael's
- Short distance to other retail centers
- Adjacent to Sturbridge Housing Community

Distance to:

Route 561	1.8 mi
Route 30	2.5 mi
Route 70	4.5 mi
I-295	6.7 mi
NJ Turnpike	7.5 mi
Route 42	8.8 mi

For more information:

Julie Kronfeld, SIOR

+1 856 802 6516

julie.kronfeld@naimertz.com

Rebecca Ting, SIOR

+1 856 234 9600

rebecca.ting@naimertz.com

21 Roland Avenue

Mount Laurel, New Jersey

+1 856 234 9600

naimertz.com

