

FOR SALE-DEVELOPMENT

# HWY 65 AND OLD HWY US 65

---

MARY DOTTY SUBDIVISION-  
DEVELOPMENT

Omaha , AR 72662

**PRESENTED BY:**

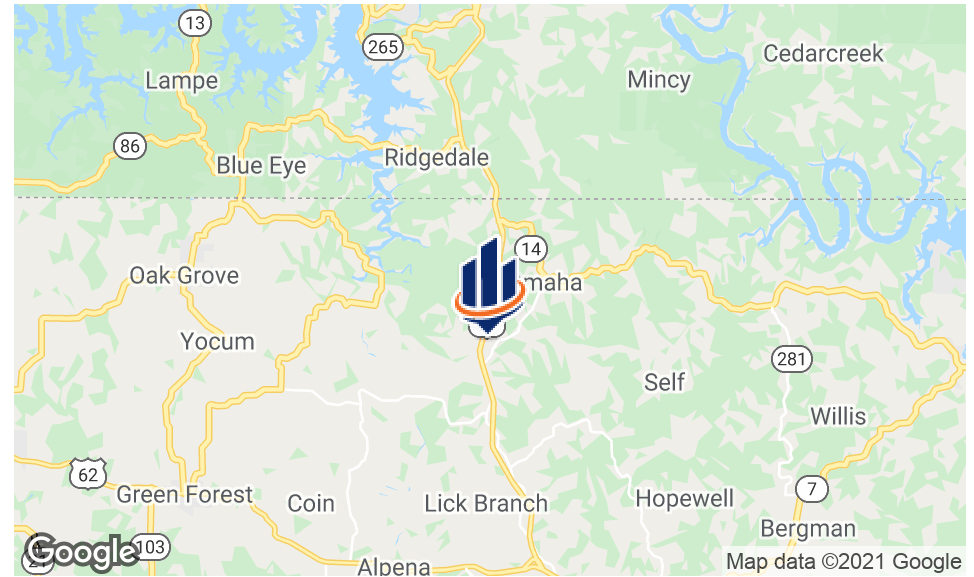
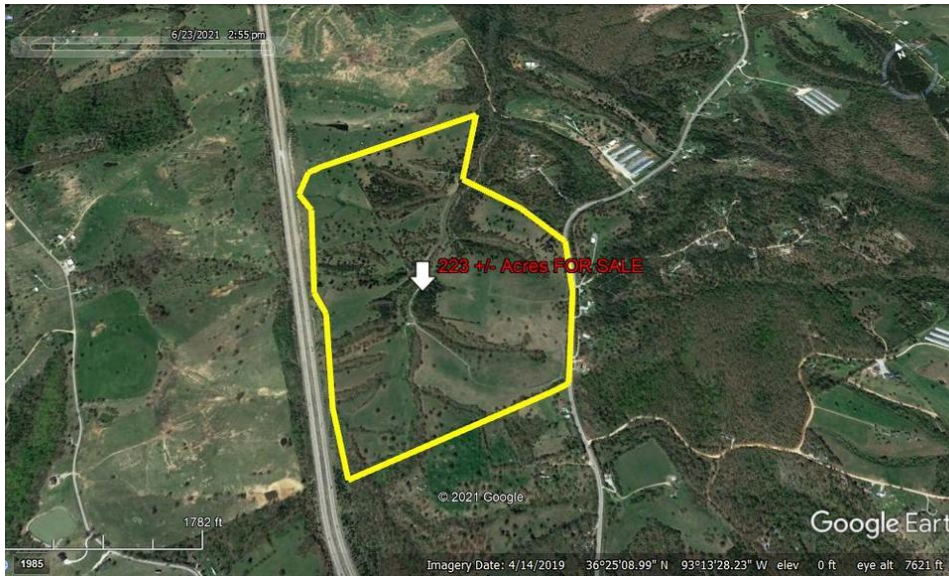
**NATHAN HUTCHINS**

O: 501.912.3660

nathan.hutchins@svn.com

AR #sa00063530





## OFFERING SUMMARY

<b>SALE PRICE:</b>	\$2,190,000
<b>AVAILABLE SF:</b>	
<b>LOT SIZE:</b>	223 Acres
<b>PRICE / ACRE:</b>	\$9,821
<b>VIDEO:</b>	<a href="#">View Here</a>

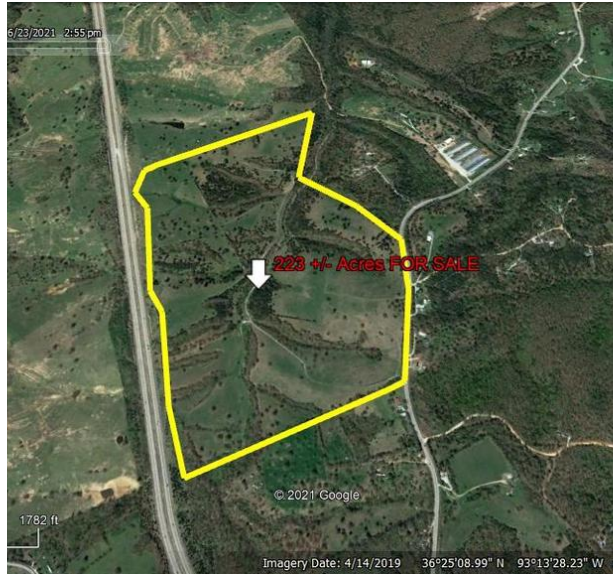
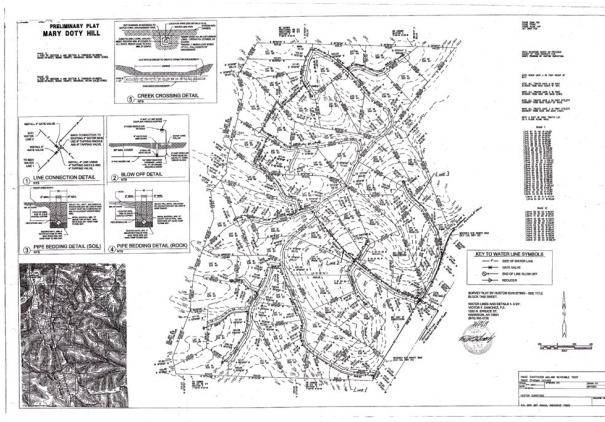
## PROPERTY OVERVIEW

Located close to the Missouri Border. Rolling pastures and Hwy 65 frontage. Utilities in place for proposed subdivision. Rolling hills and vista views. Two entry points off of Old Hwy 65.

## PROPERTY HIGHLIGHTS

- Large scale residential development opportunity.
- 3+ acre lots pre-plated.
- Utilities including water ran through property for home sites.
- Minutes from Branson.

**NATHAN HUTCHINS**  
 O: 501.912.3660  
 nathan.hutchins@svn.com  
 AR #sa00063530



**NATHAN HUTCHINS**  
O: 501.912.3660  
nathan.hutchins@svn.com  
AR #sa00063530

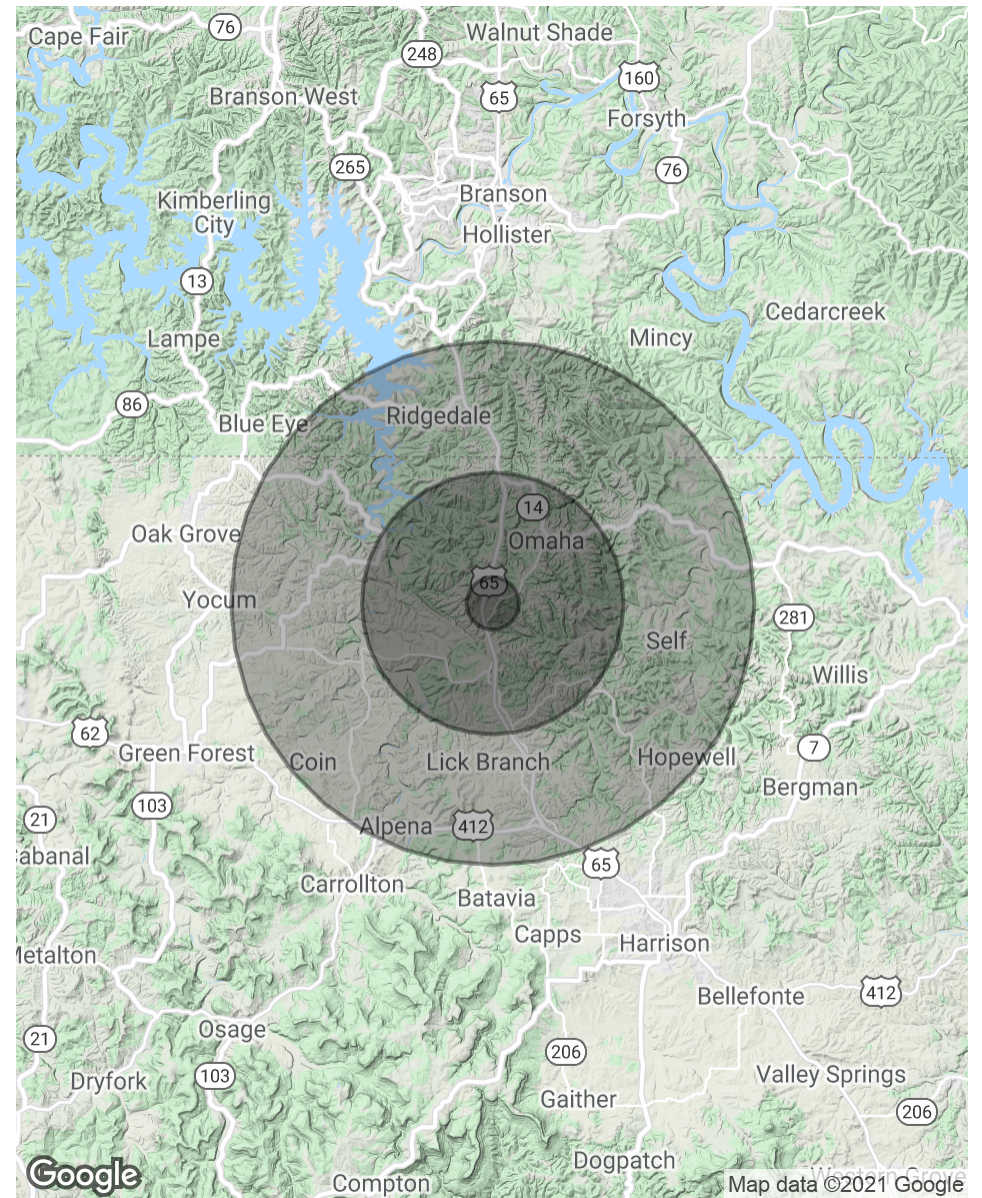
## POPULATION

	1 MILE	5 MILES	10 MILES
TOTAL POPULATION	103	2,593	13,863
AVERAGE AGE	45.6	45.2	42.5
AVERAGE AGE (MALE)	45.3	44.9	41.0
AVERAGE AGE (FEMALE)	45.8	45.4	43.3

## HOUSEHOLDS & INCOME

	1 MILE	5 MILES	10 MILES
TOTAL HOUSEHOLDS	39	986	5,463
# OF PERSONS PER HH	2.6	2.6	2.5
AVERAGE HH INCOME	\$63,436	\$62,697	\$58,296
AVERAGE HOUSE VALUE			\$188,012

\* Demographic data derived from 2010 US Census



**NATHAN HUTCHINS**

O: 501.912.3660

nathan.hutchins@svn.com

AR #sa00063530