



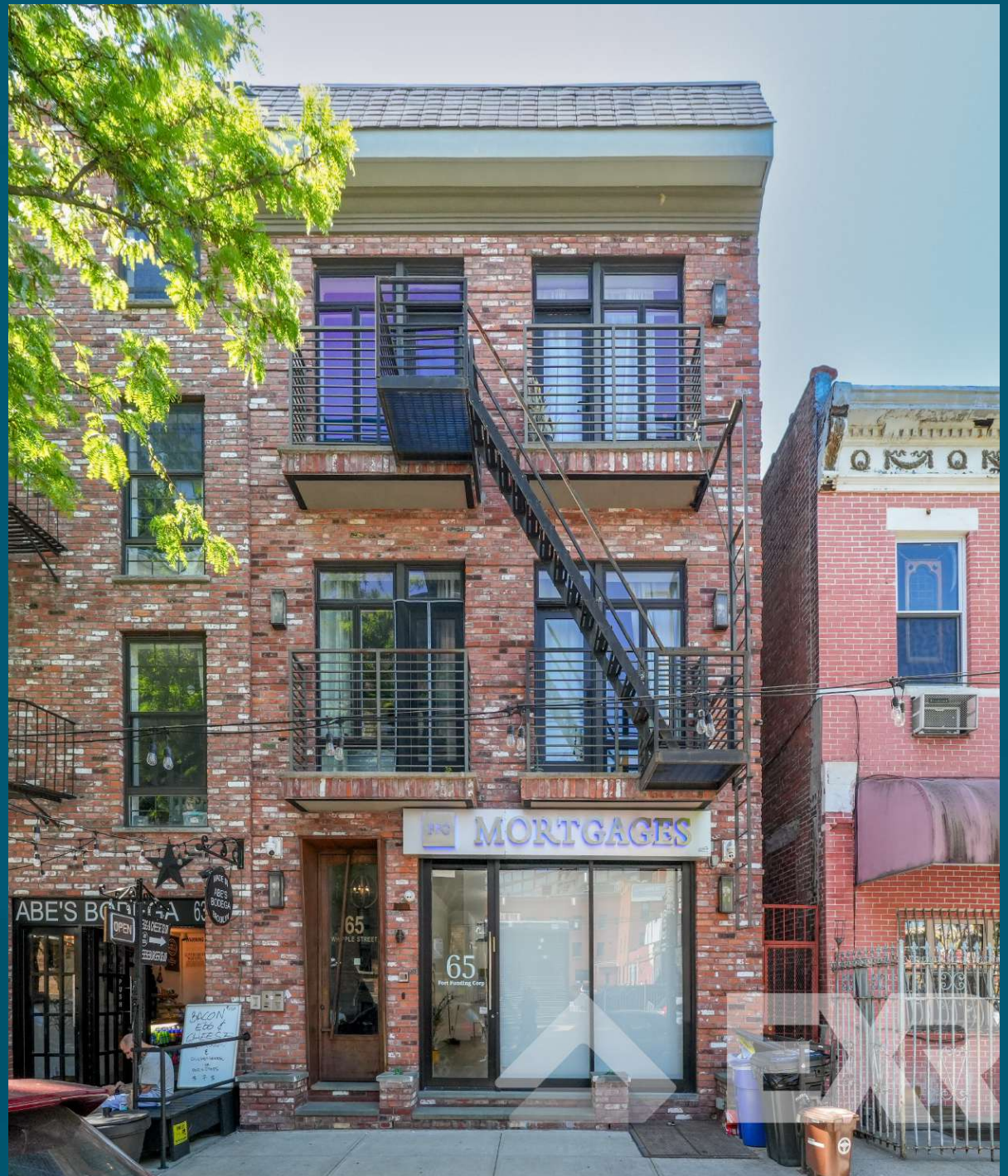
RETAIL SPACE FOR LEASE

# 65 Whipple Street

Brooklyn, NY 11206



VIEW ACTIVE LISTING



**SPACE HIGHLIGHTS**

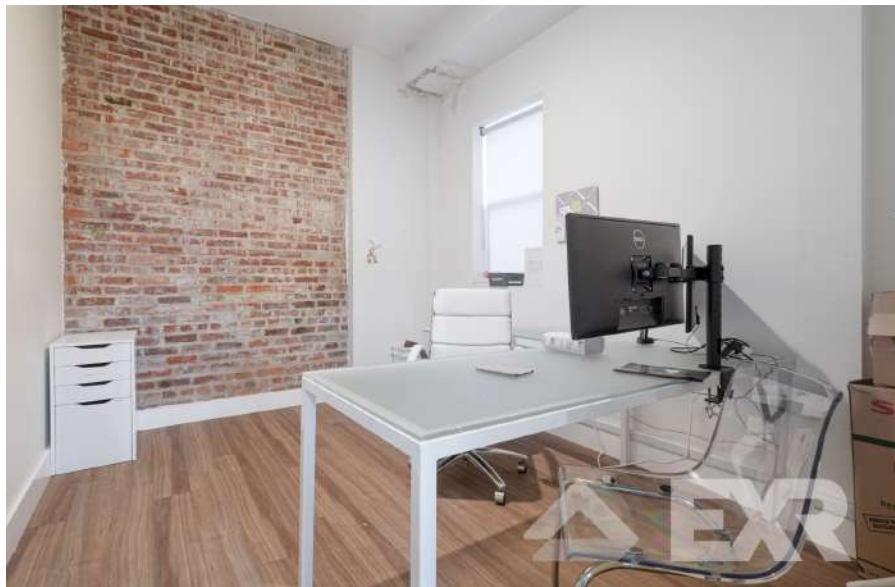
SPACE		GROUND FLOOR
AVAILABLE SPACE	2,000 SF	<b>DESCRIPTION</b> Beautiful New Build-Out! Amazing Location Right Off Broadway in Williamsburg! Built out as a fully amenitized office this space is perfect for many types of businesses. Space Features: Full Build Out Open plan office Lounge area 2 private offices High Ceilings Fully functional kitchen Glass conference room Plenty of light and air Large basement perfect for storage
PROPERTY TYPE	Retail	
LOCATION	Broadway & Throop Ave	
CEILING HEIGHT	10 FT	
FRONTAGE	12 FT	
ZONING	R6	<b>FEATURES:</b> <ul style="list-style-type: none"> <li>Fully Built Out as Professional Services Office</li> <li>Space is in Excellent Condition</li> <li>Partitioned Offices</li> <li>High Ceilings</li> <li>Located in-line with other retail</li> <li>Central Air and Heating</li> <li>Kitchen</li> <li>Plug &amp; Play</li> </ul>
OCCUPANCY	Vacant	
ASKING PRICE	<b>\$5,500/Monthly</b>	



**BROOKLYN, NY 11206**

**65 WHIPPLE ST**

**GALLERY**



**BROOKLYN, NY 11206**

**65 WHIPPLE ST**

**GALLERY**



**NEIGHBORHOOD DEMOGRAPHICS**



**218,553**

POPULATION 2023  
WITHIN 1-MILE  
RADIUS



**229,430**

2028  
POPULATION  
PROJECTION



**34 Yrs**

AVERAGE  
POPULATION  
AGE



**\$61,670**

AVERAGE HHI  
WITHIN 1-MILE  
RADIUS



**4.98%**

PROJECTED  
POPULATION  
GROWTH '23-'28



**8,689**

TOTAL BUSINESSES  
WITHIN 1-MILE  
RADIUS



**\$3,8 bn**

ANNUAL SPENDING  
WITHIN 1-MILE  
RADIUS

## NEIGHBORHOOD & TRANSPORTATION

### NEIGHBORHOOD TENANTS

- Pine & Ginger
- Secret Coffee
- New Fun Sing
- McDonald's
- Popeyes Louisiana Kitchen
- Dunkin'
- Georges
- Sonic Drive-In
- Natural Gourmet Deli
- AlvarLozan's Ecuadorian and Latin cuisine
- Mirakuya
- Habanero Café
- Taqueria El Torito
- La Isla Cuchifritos
- Taco Bell
- FOOD BAZAAR
- Floral Settings
- Casa Mia
- Winona's
- Fansway Teriyaki & Sushi

### TRANSPORTATION

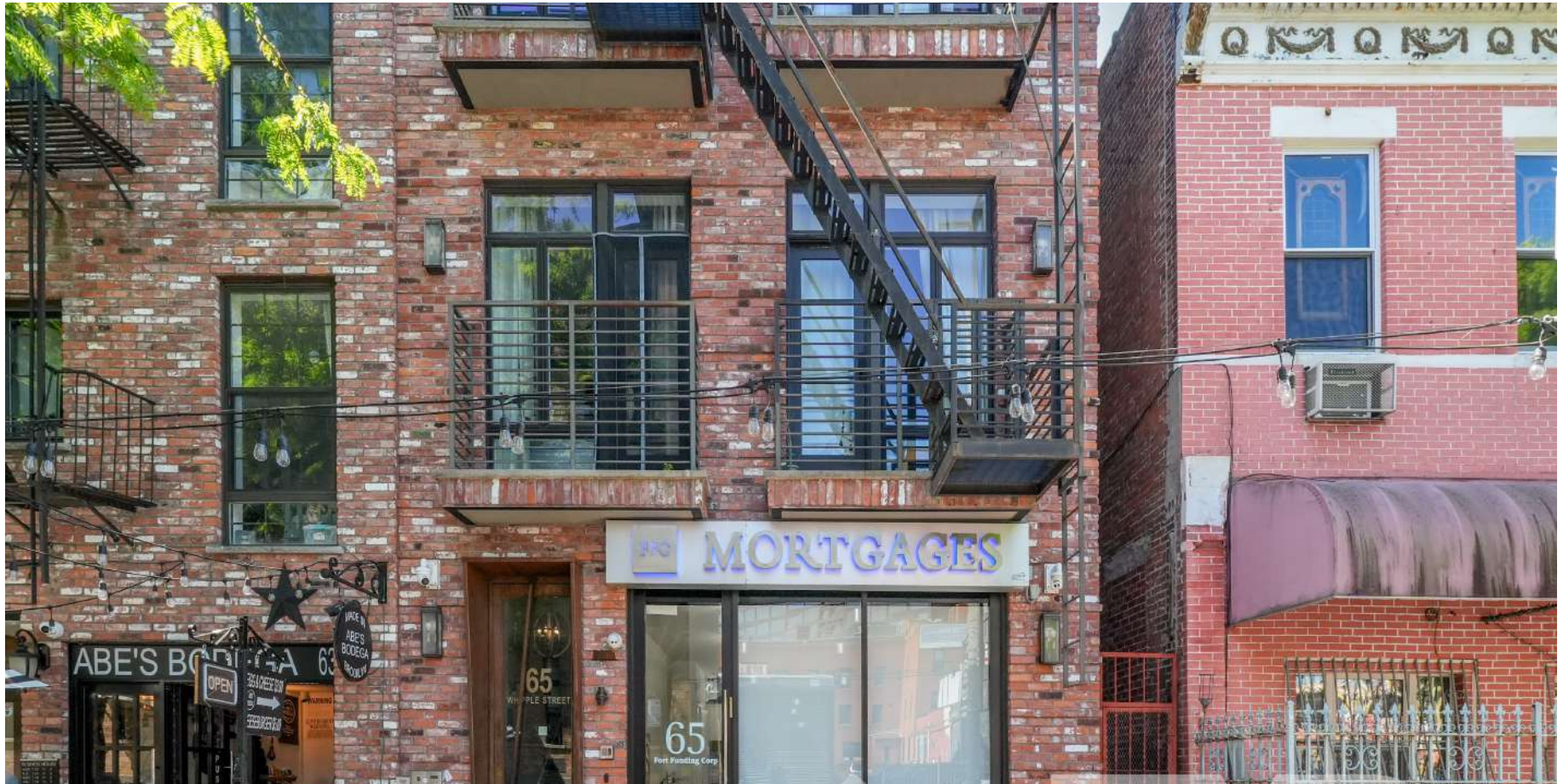
- 4 Min Walk at Flushing Ave (J,M Line), 0,2 miles away
- 4 Min Walk at Lorimer Street (J,M Line), 0,2 miles away
- 7 Min Walk at Flushing Ave (G Line), 0,4 miles away
- 8 Min Walk at Broadway (G Line), 0,4 miles away
- 12 Min Walk at Montrose Avenue (L Line), 0,8 miles away



**BROOKLYN, NY 11206**

**65 WHIPPLE ST**

**CONTACT**



**ELI DEITSCH**  
**(917) 863-3072**  
**EDEITSCH@EXRNY.COM**

**DAVID KORN**  
**(718) 387-7446**  
**DK@EXRNY.COM**

