

# Office Court at Blue Bell

583 to 595 Skippack Pike  
Blue Bell, PA

Office/Medical Space  
Available for **Sale** or **Lease**



## Available Space

Address	Suite	± SF
593 Skippack Pike	300	2,571
595 Skippack Pike	240	675



593 Skippack Pike, Suite 300  
Virtual Tour



## Property Highlights

- Class A, single-story, free-standing brick office buildings totaling ± 44,600 square feet
- **Green Building** including working casement windows, earth berming, and roof overhangs
- Self-contained suites as small as 675 square feet
- Ample parking in this park-like campus setting surrounded by lush landscaping
- Private entrances, in-suite restrooms, and sound privacy measures
- Flexible lease terms
- On-site ownership and property management



Tom Hummel  
thummel@geisrealty.com  
(215) 568-2505

[geisrealty.com](http://geisrealty.com)

996 Old Eagle School Road, Suite 1117, Wayne, PA 19087 610 989 0300

NO WARRANTY OR REPRESENTATION, EXPRESS OR IMPLIED, IS MADE AS TO THE ACCURACY OF THE INFORMATION CONTAINED HEREIN, AND THE SAME IS SUBMITTED SUBJECT TO ERRORS, OMISSIONS, CHANGE OF PRICE, RENTAL OR OTHER CONDITIONS, PRIOR SALE, LEASE OR FINANCING, OR WITHDRAWAL WITHOUT NOTICE, AND OF ANY SPECIAL LISTING CONDITIONS IMPOSED BY OUR PRINCIPALS NO WARRANTIES OR REPRESENTATIONS ARE MADE AS TO THE CONDITION OF THE PROPERTY OR ANY HAZARDS CONTAINED THEREIN ARE ANY TO BE IMPLIED.



For Lease

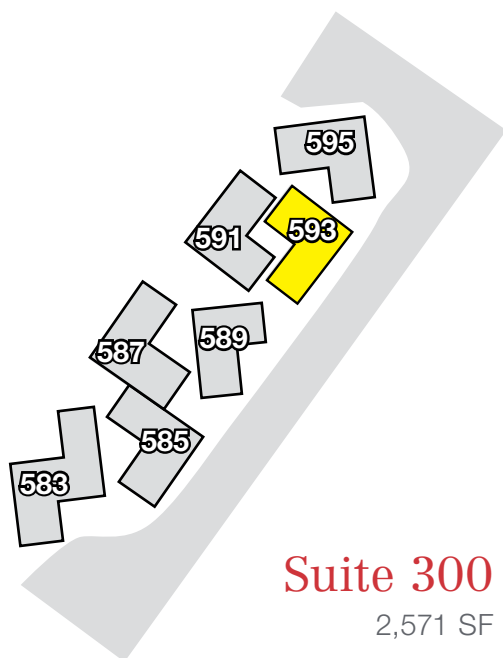
# Office Court at Blue Bell

593 Skippack Pike  
Blue Bell, PA



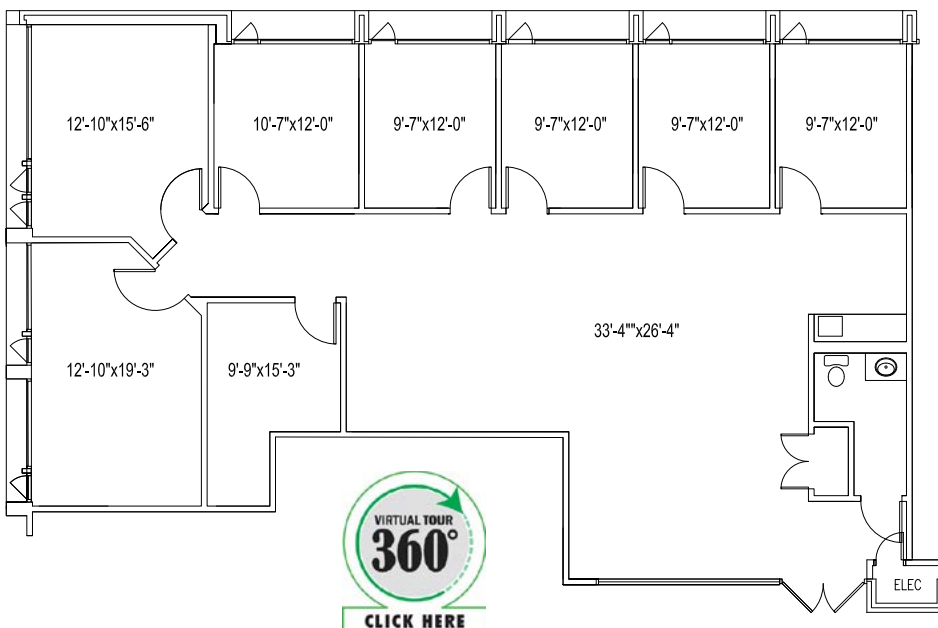
## Suite Highlights

- Immediately available, dedicated entrance with three sides of windows, large reception area, private restroom and kitchenette, no shared common area, eight oversized offices, secluded workstation area



**Suite 300**

2,571 SF



Tom Hummel  
thummel@geisrealty.com  
(215) 568-2505

[geisrealty.com](http://geisrealty.com)

996 Old Eagle School Road, Suite 1117, Wayne, PA 19087 610 989 0300

NO WARRANTY OR REPRESENTATION, EXPRESS OR IMPLIED, IS MADE AS TO THE ACCURACY OF THE INFORMATION CONTAINED HEREIN, AND THE SAME IS SUBMITTED SUBJECT TO ERRORS, OMISSIONS, CHANGE OF PRICE, RENTAL OR OTHER CONDITIONS, PRIOR SALE, LEASE OR FINANCING, OR WITHDRAWAL WITHOUT NOTICE, AND OF ANY SPECIAL LISTING CONDITIONS IMPOSED BY OUR PRINCIPALS NO WARRANTIES OR REPRESENTATIONS ARE MADE AS TO THE CONDITION OF THE PROPERTY OR ANY HAZARDS CONTAINED THEREIN ARE ANY TO BE IMPLIED.

For Lease

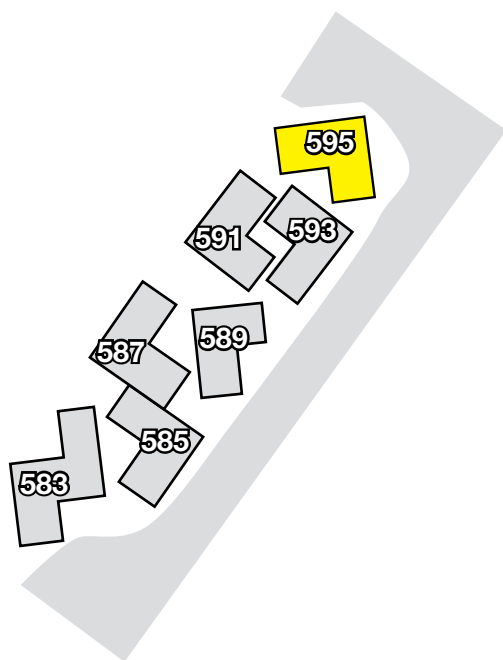
# Office Court at Blue Bell

595 Skippack Pike  
Blue Bell, PA



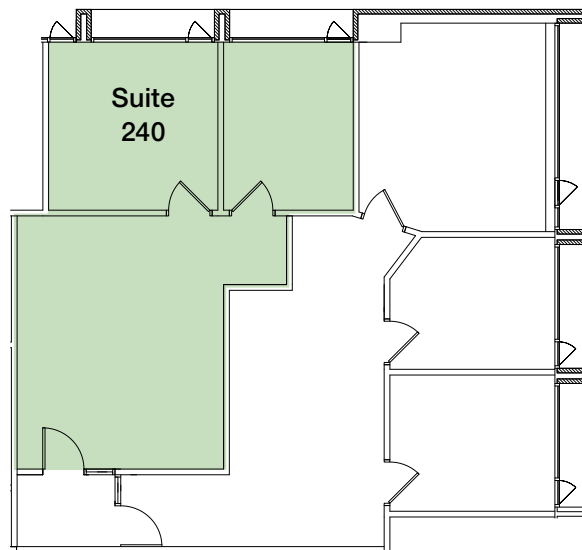
## Suite Highlights

- Immediately available, flexible space options with suites as small as 675 and up to 1,664 SF. Exterior offices with generous glass line, large open workstation areas.



## Suite 240

675 SF



Tom Hummel  
thummel@geisrealty.com  
(215) 568-2505

[geisrealty.com](http://geisrealty.com)

996 Old Eagle School Road, Suite 1117, Wayne, PA 19087 610 989 0300

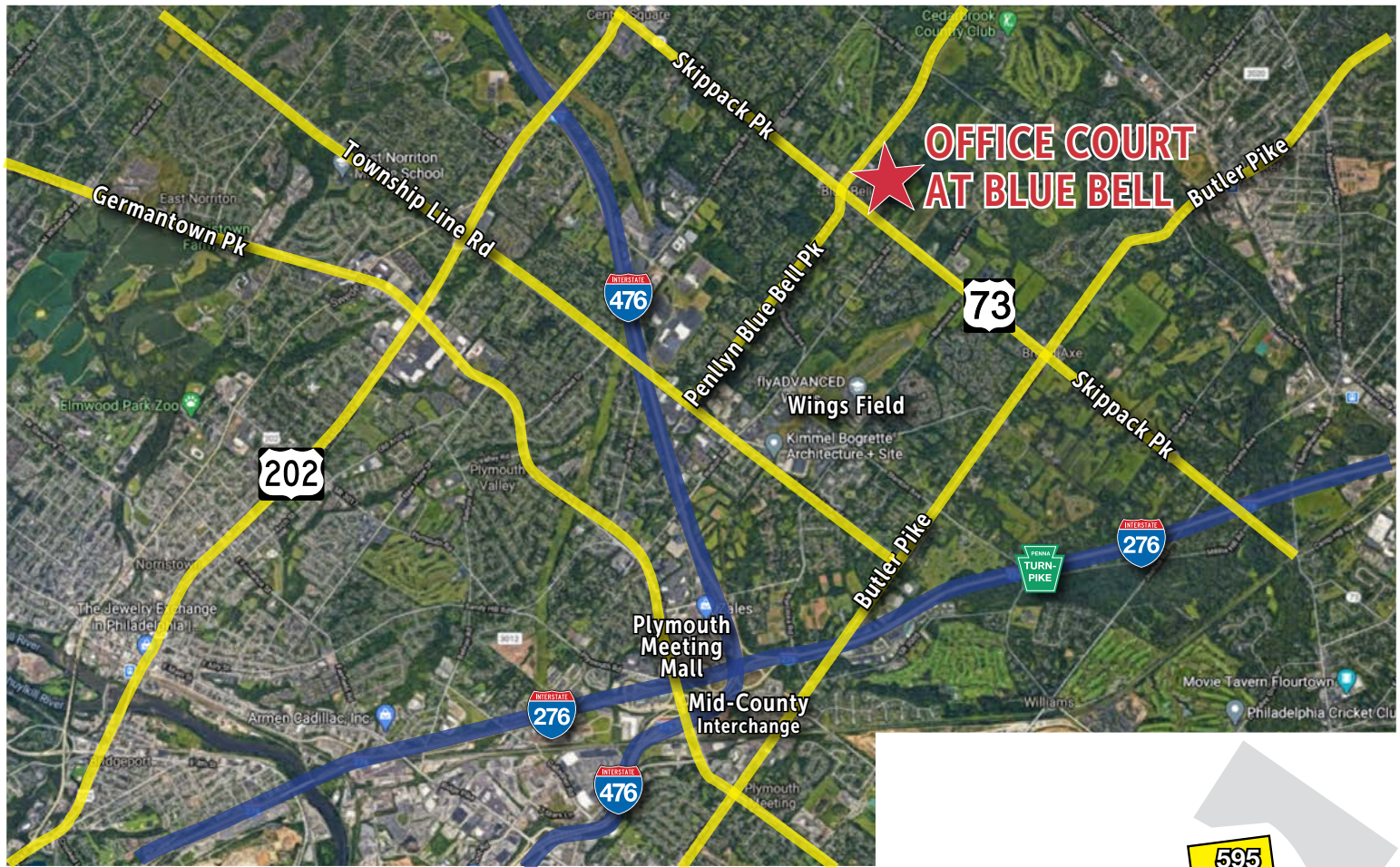
NO WARRANTY OR REPRESENTATION, EXPRESS OR IMPLIED, IS MADE AS TO THE ACCURACY OF THE INFORMATION CONTAINED HEREIN, AND THE SAME IS SUBMITTED SUBJECT TO ERRORS, OMISSIONS, CHANGE OF PRICE, RENTAL OR OTHER CONDITIONS, PRIOR SALE, LEASE OR FINANCING, OR WITHDRAWAL WITHOUT NOTICE, AND OF ANY SPECIAL LISTING CONDITIONS IMPOSED BY OUR PRINCIPALS NO WARRANTIES OR REPRESENTATIONS ARE MADE AS TO THE CONDITION OF THE PROPERTY OR ANY HAZARDS CONTAINED THEREIN ARE ANY TO BE IMPLIED.



For Lease

# Office Court at Blue Bell

## Location Map



## Nearby Amenities

- Immediate access to southern PA's entire highway system:
  - PA Turnpike, I-476 (Blue Route & NE Extension)
  - I-76 (Schuylkill Expressway)
  - Route 202
- Plymouth Meeting Mall – 3 miles
- Close to executive and employee residences
- Local eateries and fine dining establishments including adjacent to Blue Bell Inn & Panache
- Numerous day care alternatives
- Variety of hotels and extended stay options
- Multiple country clubs nearby and Wings Field Airport (KLOM) – 2 miles



Tom Hummel  
thummel@geisrealty.com  
(215) 568-2505

[geisrealty.com](http://geisrealty.com)

996 Old Eagle School Road, Suite 1117, Wayne, PA 19087 610 989 0300

NO WARRANTY OR REPRESENTATION, EXPRESS OR IMPLIED, IS MADE AS TO THE ACCURACY OF THE INFORMATION CONTAINED HEREIN, AND THE SAME IS SUBMITTED SUBJECT TO ERRORS, OMISSIONS, CHANGE OF PRICE, RENTAL OR OTHER CONDITIONS, PRIOR SALE, LEASE OR FINANCING, OR WITHDRAWAL WITHOUT NOTICE, AND OF ANY SPECIAL LISTING CONDITIONS IMPOSED BY OUR PRINCIPALS NO WARRANTIES OR REPRESENTATIONS ARE MADE AS TO THE CONDITION OF THE PROPERTY OR ANY HAZARDS CONTAINED THEREIN ARE ANY TO BE IMPLIED.