

# 2973 16TH STREET

FOR LEASE | CREATIVE OFFICE SPACES IN MISSION DISTRICT

**TCP**  
**TOUCHSTONE**  
COMMERCIAL PARTNERS



[WWW.TCPRE.COM](http://WWW.TCPRE.COM)

**ZACH HAUPERT** [zhaupert@tcpre.com](mailto:zhaupert@tcpre.com)  
D 415.539.1121 | C 415.812.1219

**MICHAEL SANBERG** [msanberg@tcpre.com](mailto:msanberg@tcpre.com)  
D 415.539.1103 | C 415.697.6088



# 2973 16TH STREET

## PROPERTY SUMMARY

### ADDRESS

2973 16th Street, San Francisco, CA 94110

### AVAILABLE SPACE

Fourth Floor: +/- 4,281 Square Feet

Second Floor: +/- 4,281 Square Feet

**TOTAL +/- 8,562 Square Feet**

*\*Floors Can Be Leased Together or Separately*

### RENTAL RATE

Fourth Floor: \$15 / Square Foot / Year, I.G.

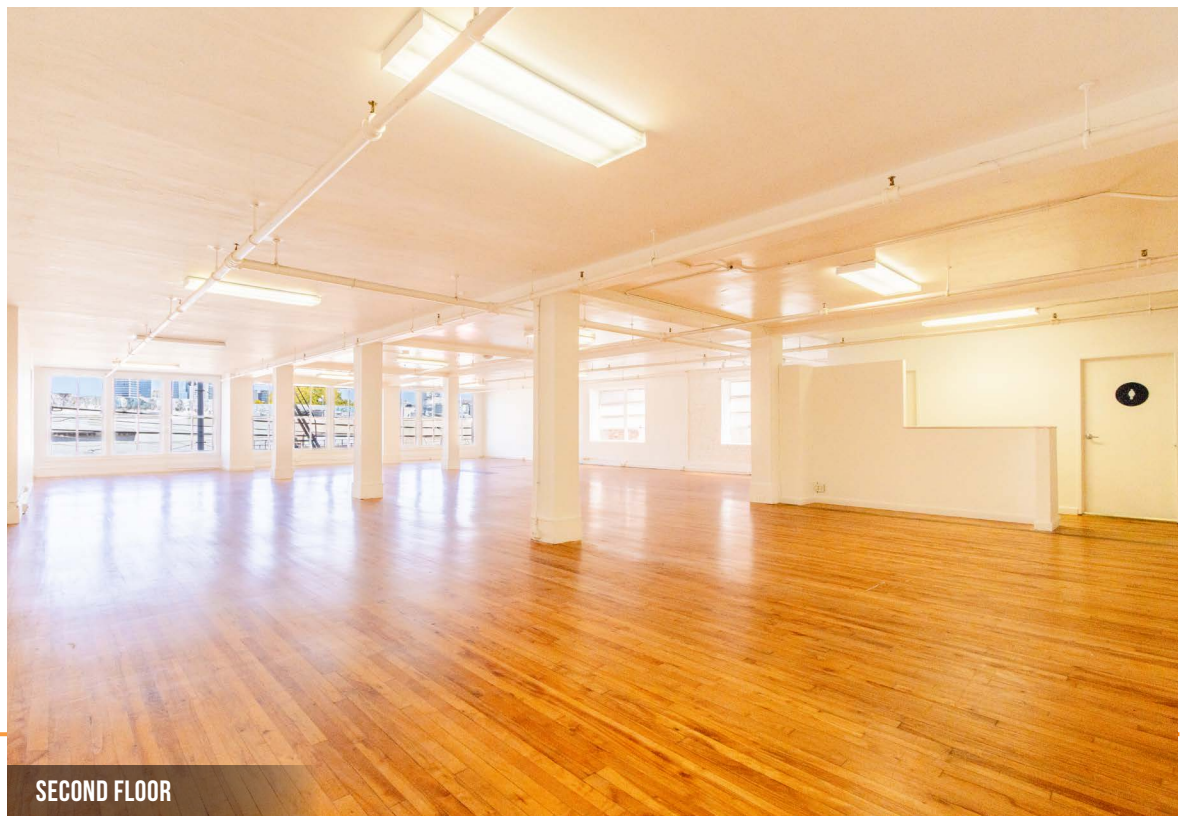
Second Floor: \$21 / Square Foot / Year, I.G.

### AVAILABLE

Immediately

## BUILDING ATTRIBUTES

- + Office Building on Highly Identifiable 16<sup>th</sup> Street
- + Hardwood Floors Throughout
- + Great Natural Light
- + Internal Staircases Connect All Floors
- + Passenger Elevator
- + Walkable To BART, Muni, and Neighborhood Amenities





# 2973 16TH STREET

## SUITE SUMMARY | FOURTH FLOOR

### ADDRESS

2973 16th Street, San Francisco, CA 94110

### AVAILABLE SPACE

Fourth Floor: +/- 4,281 Square Feet

### RENTAL RATE

\$15 / Square Foot / Year, Industrial Gross

### AVAILABLE

Immediately

## BUILDING ATTRIBUTES

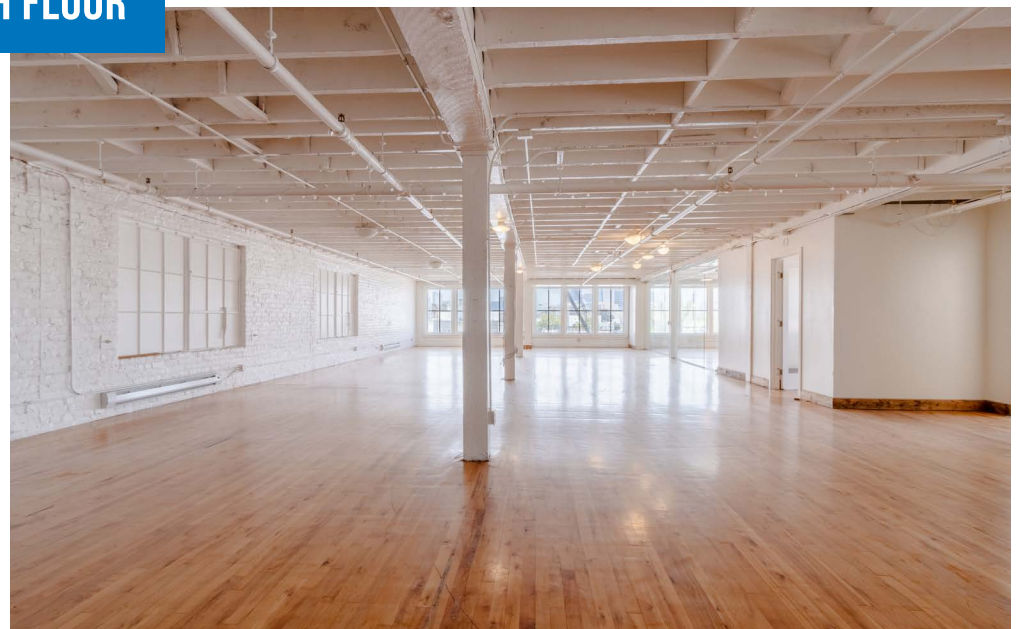
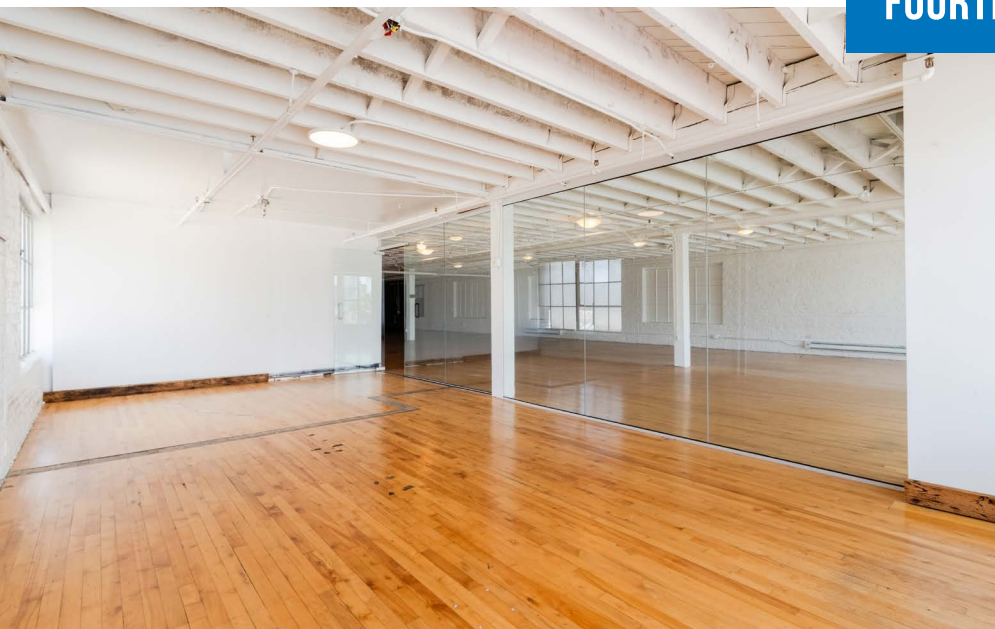
- + Two (2) Meeting Rooms
- + One (1) Conference Room
- + Three (3) Restrooms
- + Hardwood Floors Throughout
- + Great Natural Light







FOURTH FLOOR

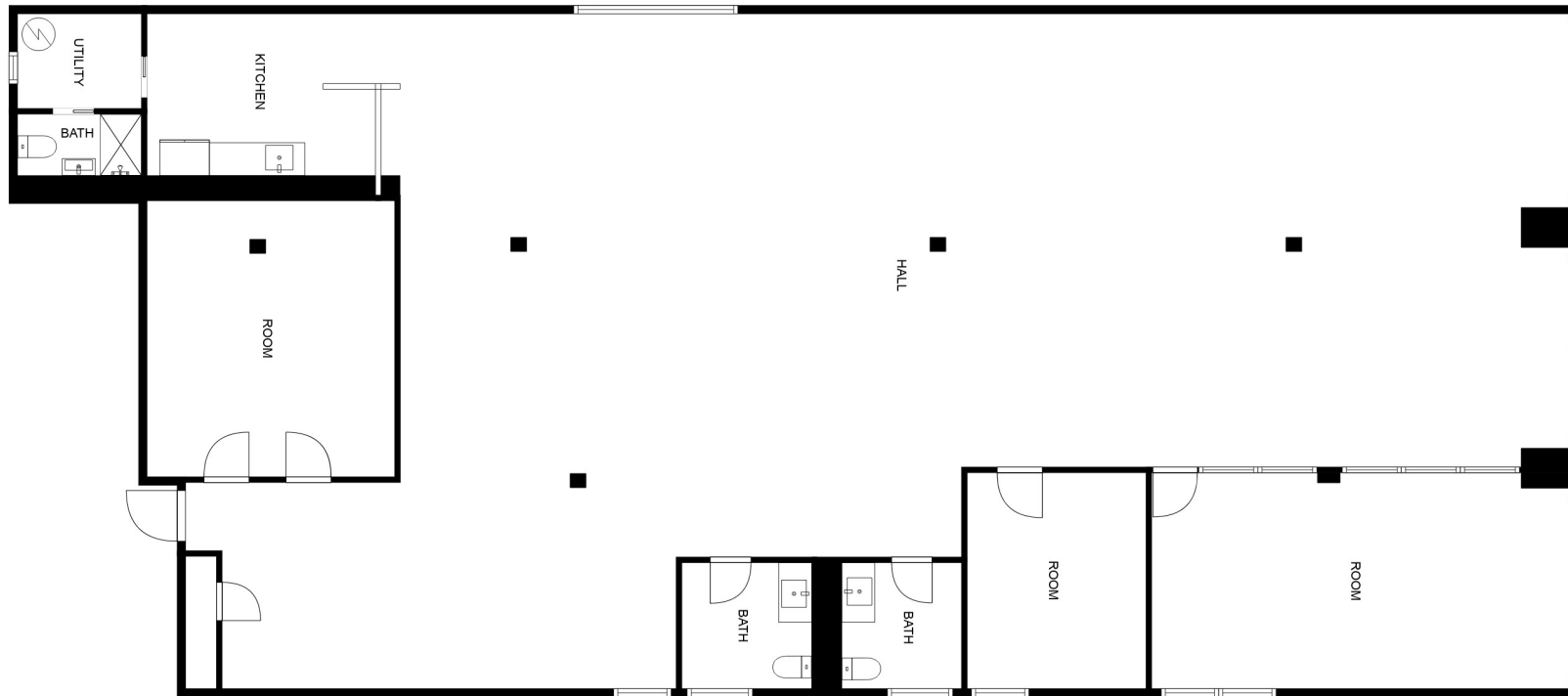


# 2973 16TH STREET

## Floor Plans

Fourth Level

+/- 4,281 Square Feet





# 2973 16TH STREET

## SUITE SUMMARY | SECOND FLOOR

### ADDRESS

2973 16th Street, San Francisco, CA 94110

### AVAILABLE SPACE

Second Floor: +/- 4,281 Square Feet

### RENTAL RATE

\$21 / Square Foot / Year, Industrial Gross

### AVAILABLE

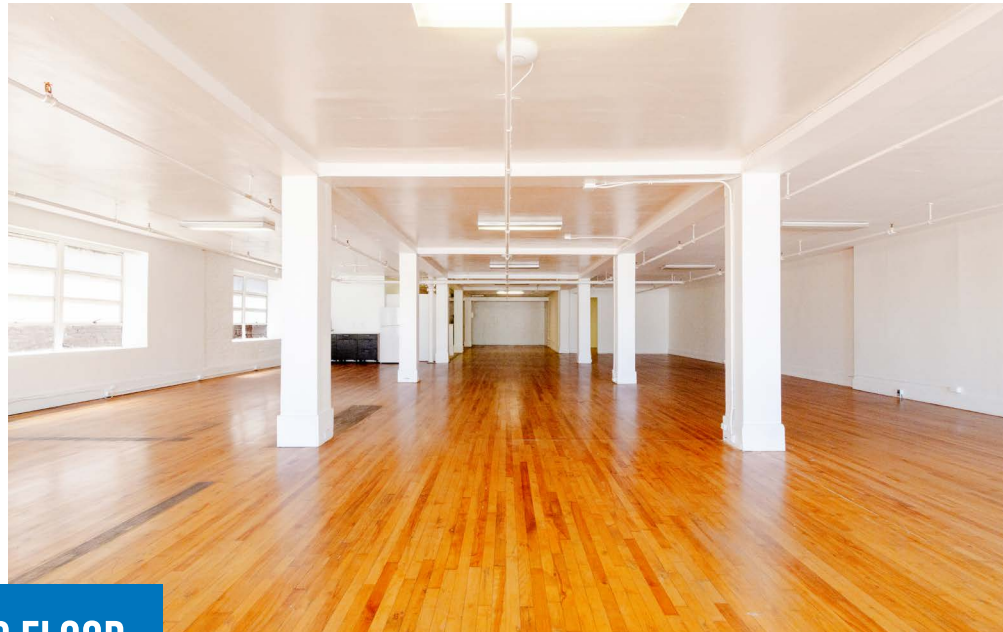
Immediately

## BUILDING ATTRIBUTES

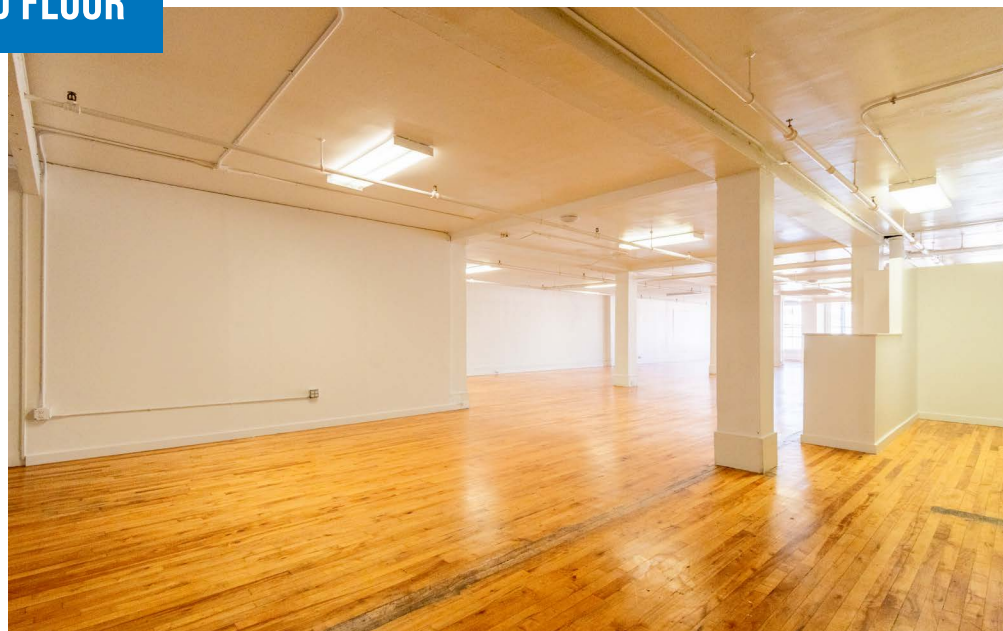
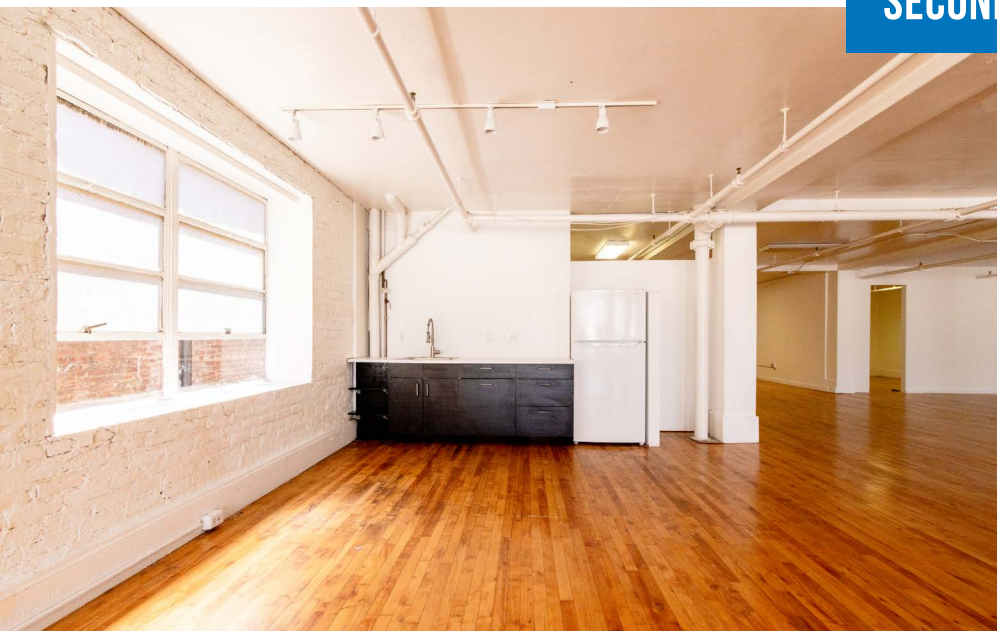
- + Two (2) Meeting Rooms
- + One (1) Office
- + Kitchenette
- + Two (2) Restrooms
- + Hardwood Floors Throughout
- + Great Natural Light







SECOND FLOOR



# 2973 16TH STREET

## Floor Plans

Second Ground

+/- 4,281 Square Feet





# 2973 16TH STREET

## LOCATION OVERVIEW

Desirable location in Mission District, walkable to nearby amenities, public transportation and to surrounding neighborhoods.



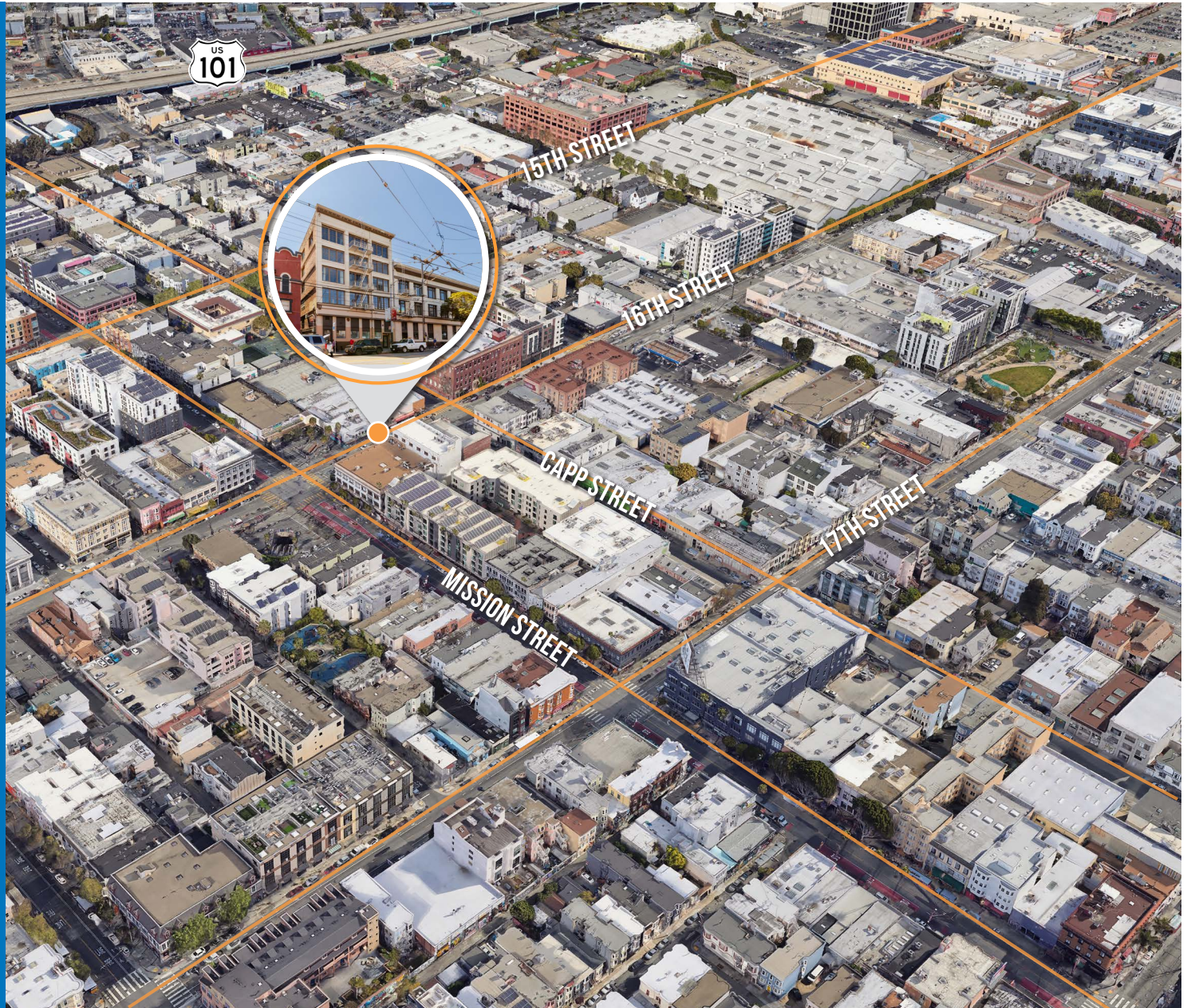
**01 MIN** to 16th St BART  
**02 MIN** to 16th St MUNI  
**14 MIN** to Dolores Park



**08 MIN** to Mission Bay  
**12 MIN** to Union Square  
**14 MIN** to Financial District



**04 MIN** to 80 On-Ramp  
**06 MIN** to 101 On-Ramp  
**07 MIN** to 280 On-Ramp

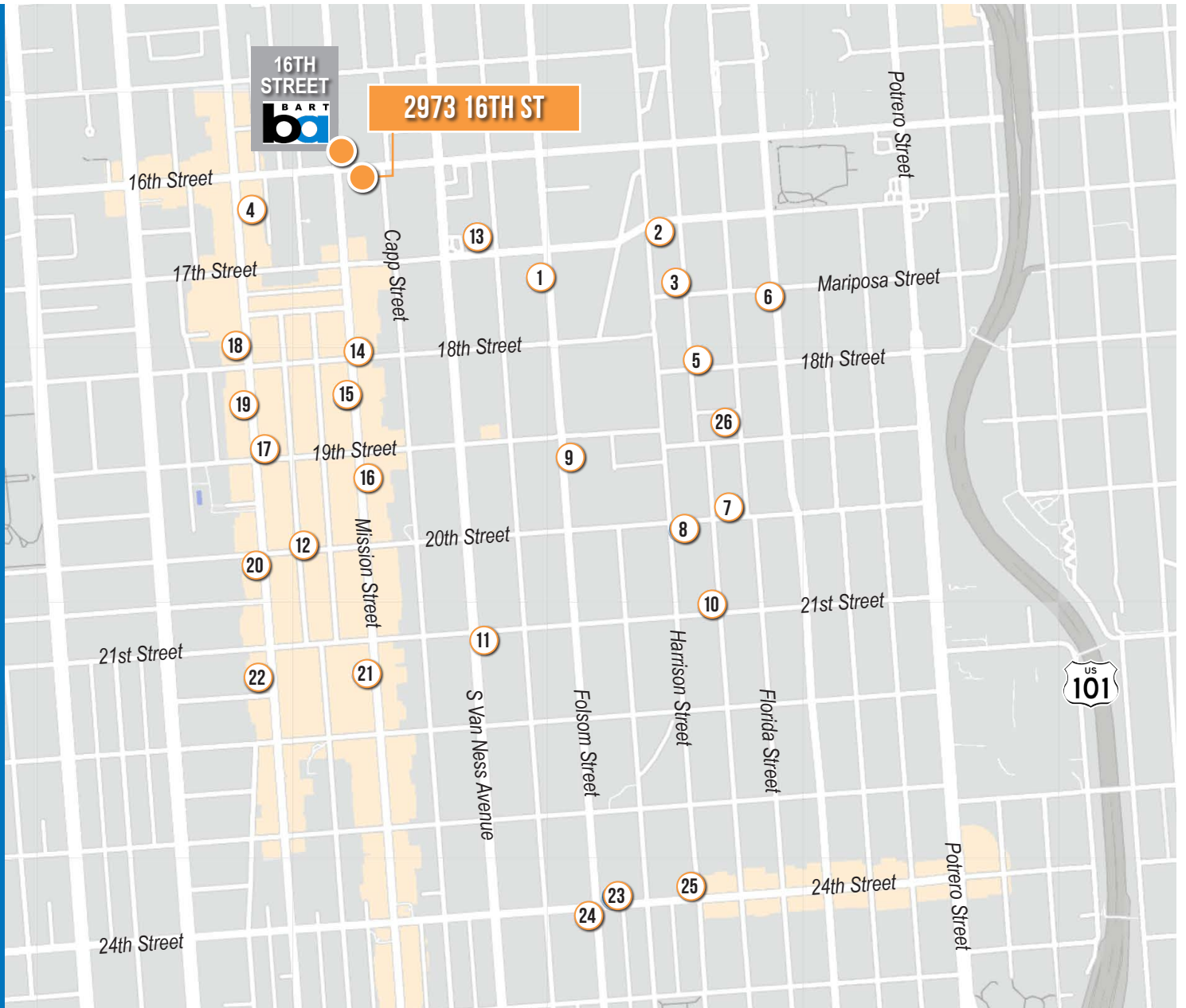




# 2973 16TH STREET

## NEARBY AMENITIES

- 1..... Stable Cafe
- 2..... Gus's Community Market
- 3..... The Archery
- 4..... Stonemill Matcha
- 5..... Tartine Manufactory
- 6..... Starbucks
- 7..... Trick Dog
- 8..... Flour + Water
- 9..... The Homestead
- 10..... Bon, Nene
- 11..... Limon Rotisserie
- 12..... Garden Creamery
- 13..... Mission Bowling Club
- 14..... Grand Mission Donuts
- 15..... Mission Chinese Food
- 16..... Cha Cha Cha
- 17..... Etcetera Wine Bar
- 18..... Taishoken SF
- 19..... Dandelion Chocolate
- 20..... Smitten Ice Cream
- 21..... Foreign Cinema
- 22..... Ritual Coffee Roasters
- 23..... Haus Coffee
- 24..... Basa Seafood Express
- 25..... Humphry Slocombe
- 26..... Farmhouse Kitchen Thai Cuisine

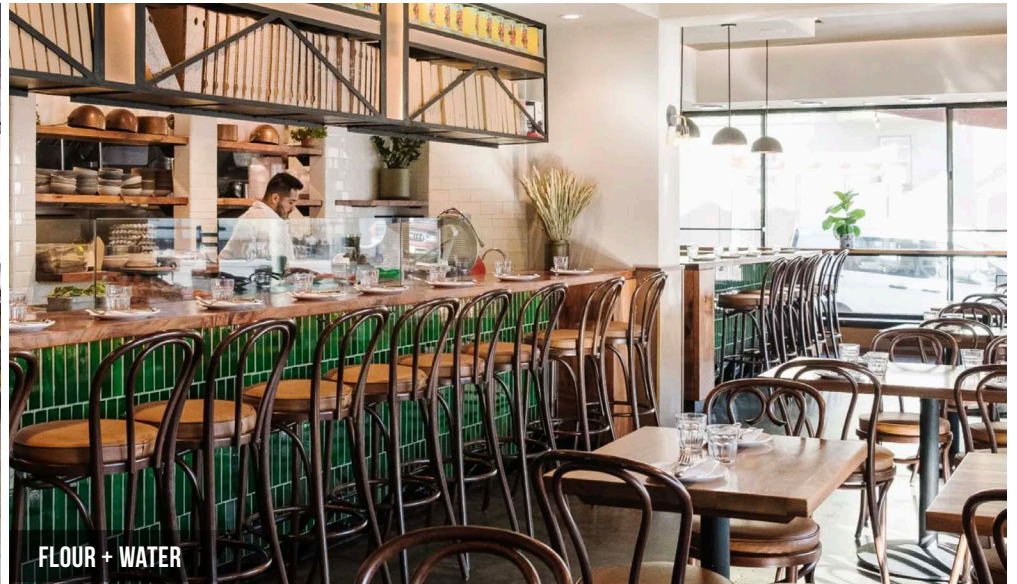




# 2973 16TH STREET



FARMHOUSE THAI



FLOUR + WATER



GUS'S COMMUNITY MARKET



TARTINE MANUFACTORY



STABLE CAFE



2973 16TH STREET



Corp. Lic. 01112906  
www.tcpre.com

## ZACH HAUPERT

D 415.539.1121 C 415.812.1219  
zhaupert@tcpre.com DRE # 01822907

## MICHAEL SANBERG

D 415.539.1103 C 415.697.6088  
msanberg@tcpre.com DRE # 01930041

This document has been prepared by Touchstone Commercial Partners for advertising and general information only. Touchstone Commercial Partners makes no guarantees, representations or warranties of any kind, expressed or implied, regarding the information including, but not limited to, warranties of content, accuracy and reliability. Any interested party should undertake their own inquiries as to the accuracy of the information. Touchstone Commercial Partners excludes unequivocally all inferred or implied terms, conditions and warranties arising out of this document and excludes all liability for loss and damages arising there from. This publication is the copyrighted property of Touchstone Commercial Partners and/or its licensor(s). ©2025. All rights reserved.