

Flex/Industrial for Lease

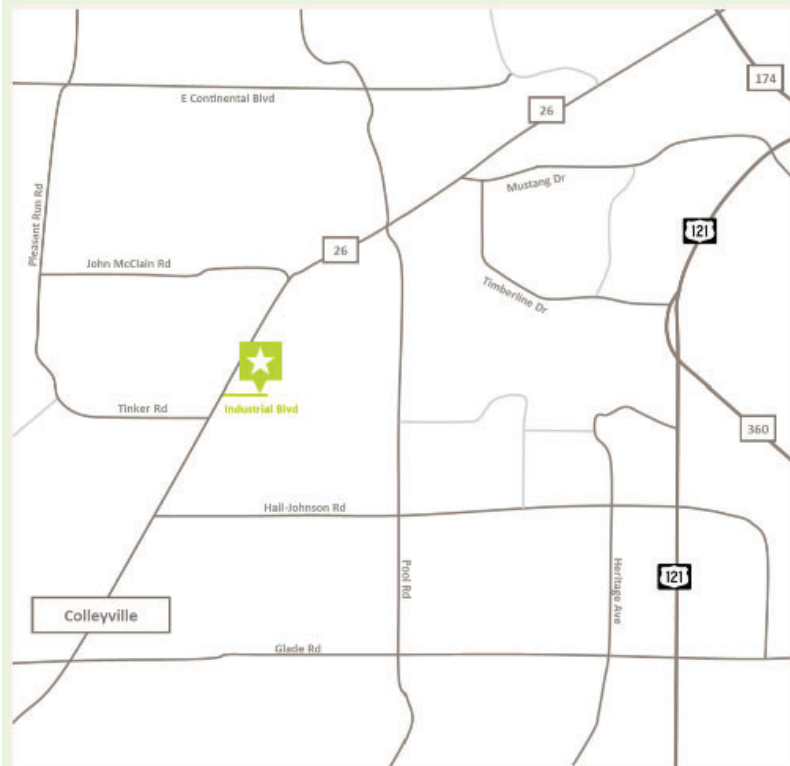
1900 & 1904 Industrial
Blvd Colleyville, TX 76034



Brian Goldstein
brian@kingfisherrp.com
(469) 660-8460

Flex/Industrial for Lease

1900 & 1904 Industrial
Blvd Colleyville, TX 76034



Lease Rate & Structure

16.15 / SF NNN (est. 4.33 opex)

Property Features

- +/- 1,279 SF (885 SF Office, 394 SF Warehouse)
- Grade level overhead door (12' x 14')
- 4.42 / 1000 SF Parking Ratio
- 3 Phase Power
- Zoned "ML" Light Manufacturing
- +/- 1 27,000 total SF
- .95 Acres
- Easy access to SH 114/SH 121 + DFW airport

Location Overview

The subject property provides an ideal infill location within the Southlake/Grapevine/Colleyville submarket. It is located just off Colleyville Boulevard with an average traffic count of around 17,000 vehicles daily. This property is strategically located in an area with heavy traffic counts and easy access to highway 121 and the DFW International Airport.

Available Space

- Suites 201, 1,279 SF



Brian Goldstein
brian@kingfisherrp.com
(469) 660-8460

Flex/Industrial for Lease

Exterior Photos

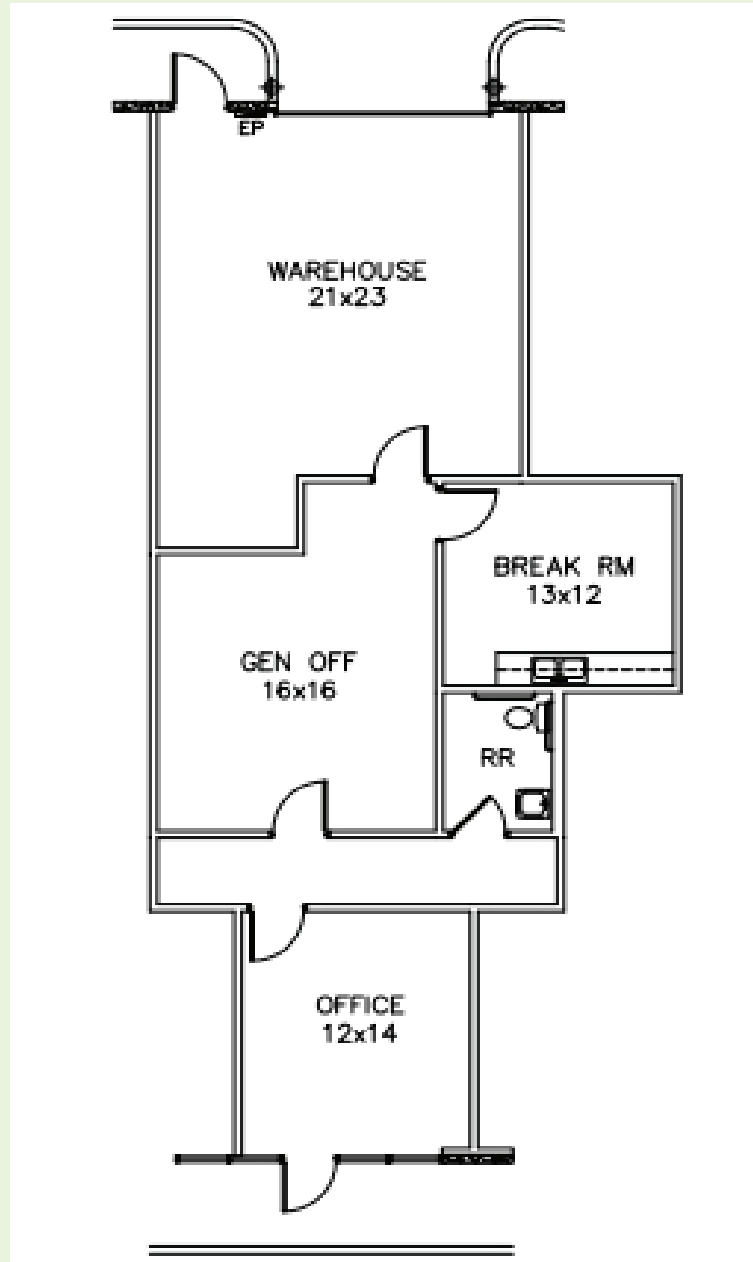


Brian Goldstein
brian@kingfisherrp.com
(469) 660-8460

Flex/Industrial for Lease

Floor Plan

Suite 201



Brian Goldstein
brian@kingfisherrp.com
(469) 660-8460