

FOR LEASE: PARKER PLAZA MEDICAL & PROFESSIONAL OFFICES

9400 Gladiolus Drive, Ft. Myers, FL 33908



Availability / Size / Rate

| SUITE | USEABLE AREA (SF) | PRICE (PSF) NNN |
|-----------|-------------------|-----------------|
| 250 | LEASED | |
| 105 / 106 | 2,735 | \$16.00 |

Additional Highlights

- Parker Plaza is a medical and professional office building close to Lee Memorial's HealthPark Hospital in S. Ft. Myers
- The Common Area Maintenance (CAM) fee is \$7.50/SF
- Located near restaurants and shopping, next to Lakes Regional Library and convenient to Summerlin Rd. & US 41
- 2024 Traffic Count is 24,000 AADT

| 2024 DEMOGRAPHICS | 1 MILE | 3 MILE | 5 MILE |
|------------------------|-----------|-----------|-----------|
| TOTAL POPULATION | 8,958 | 55,567 | 123,907 |
| NO. OF HOUSEHOLDS (HH) | 4,331 | 28,232 | 61,537 |
| MEDIAN AGE | 60.5 | 63.4 | 59.9 |
| AVERAGE HH INCOME | \$115,623 | \$124,608 | \$118,574 |



For more information please contact:

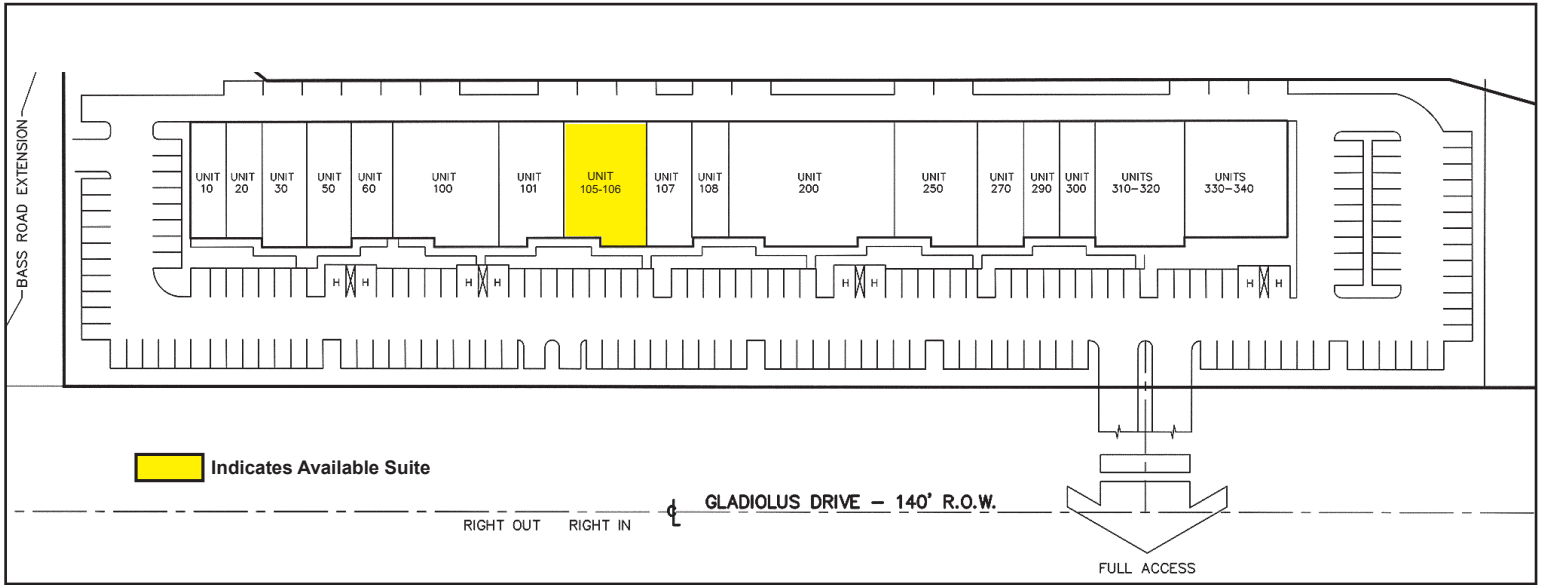
Rodney Fidler, CCIM
Principal
Direct 239.470.2317
Rodney@FidlerRealEstate.com

The information contained herein was obtained from sources believed reliable, however, Fidler Real Estate Services makes no guarantees, warranties or representations as to the completeness or accuracy thereof. The presentation of this property is submitted subject to errors, omissions, change of price or conditions prior to sale or lease or withdrawal without notice.

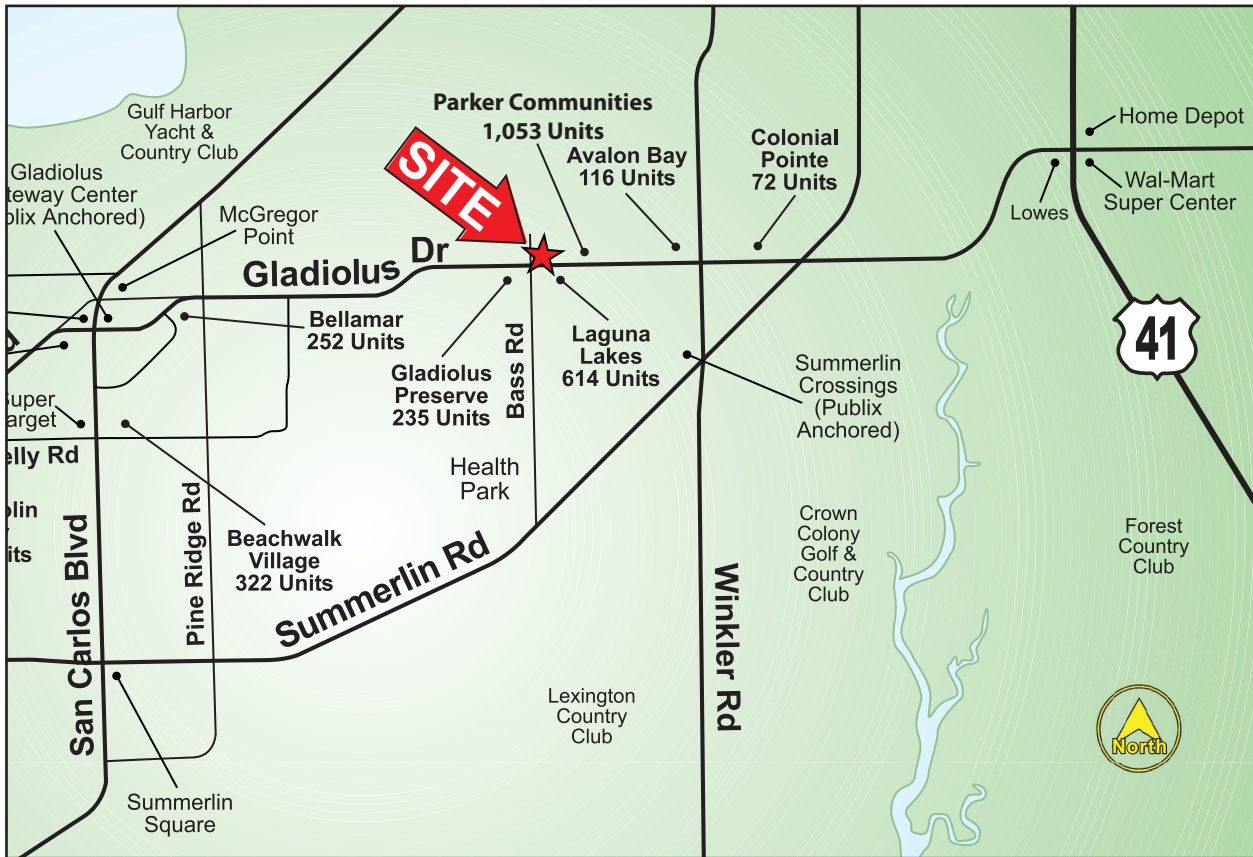
FOR LEASE: PARKER PLAZA MEDICAL & PROFESSIONAL OFFICES

9400 Gladiolus Drive, Ft. Myers, FL 33908

Site Plan



Map

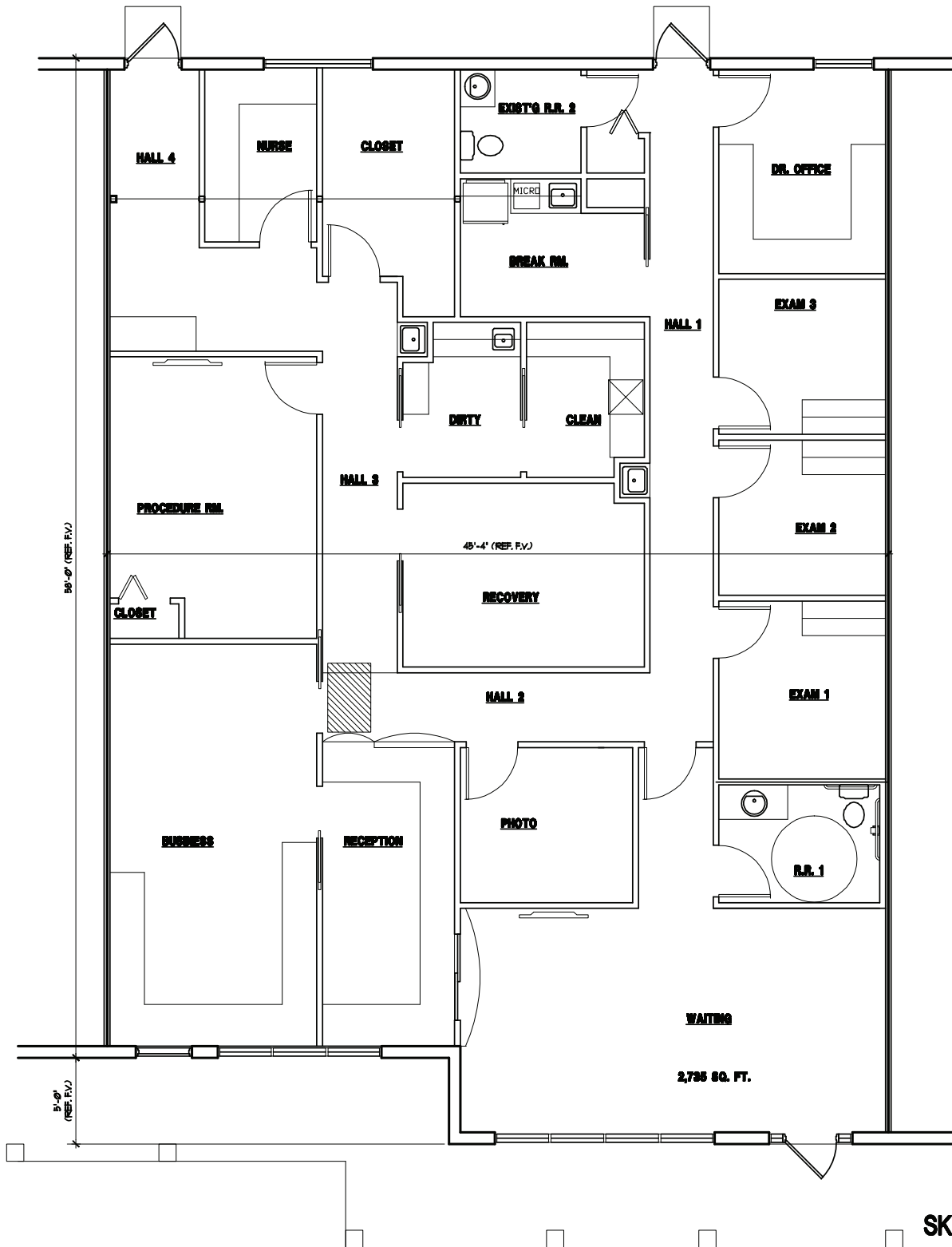


Rodney Fidler, CCIM
Principal
Direct 239.470.2317
Rodney@FidlerRealEstate.com

FOR LEASE: PARKER PLAZA MEDICAL & PROFESSIONAL OFFICES

9400 Gladiolus Drive, Ft. Myers, FL 33908

Suite 105 / 106



Rodney Fidler, CCIM
Principal
Direct 239.470.2317
Rodney@FidlerRealEstate.com

FOR LEASE: PARKER PLAZA MEDICAL & PROFESSIONAL OFFICES

9400 Gladiolus Drive, Ft. Myers, FL 33908



Aerial



Photo



Rodney Fidler, CCIM
Principal
Direct 239.470.2317
Rodney@FidlerRealEstate.com