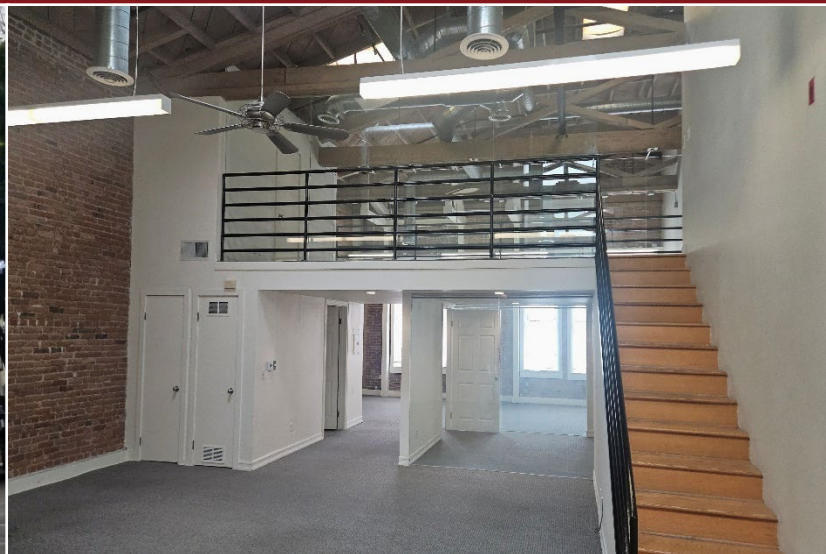
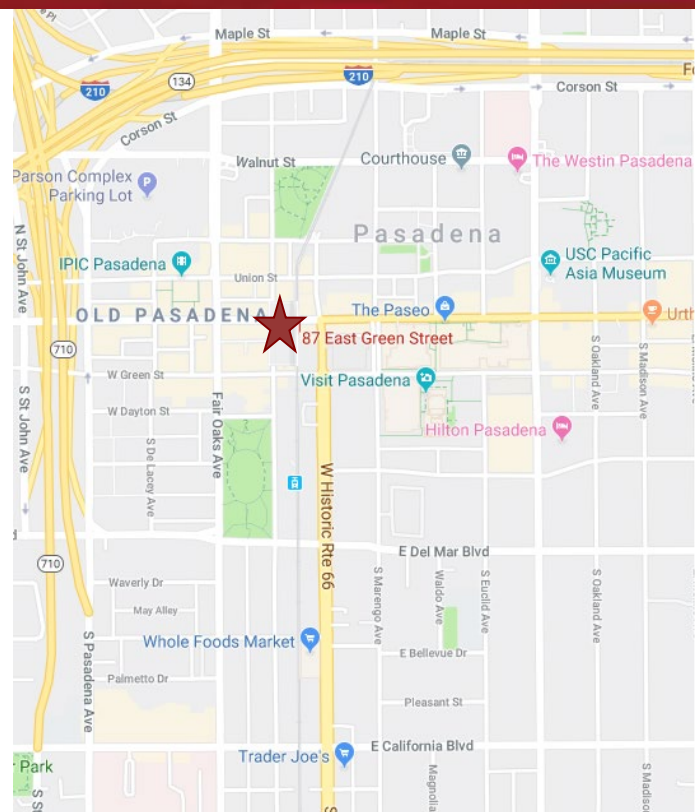


THE EDISON EL REY BUILDING CREATIVE SPACE FOR LEASE



87 E. GREEN STREET, PASADENA, CA

- AVAILABLE SPACE:**
- Suite 302 – Approximately 1,917 SF
 - *Suite 303 – Approximately 1,715 SF
 - *Suite 304 – Approximately 1,507 SF
 - Suite 305 – Approximately 1,739 SF
 - Suite 306 – Approximately 1,833 SF
- *Suites 303 and 304 could be combined to equal 3,222 rentable sq. ft.
- LEASE RATE:**
- \$2.30 - \$2.50 per sq. ft., Modified Gross.
- Tenant to pay its own utilities, interior janitorial and liability insurance.
- PARKING:**
- Unreserved parking available at nearby parking structures at current market rate.
- AMENITIES:**
- * Restored historic building located in the heart of "Old Town Pasadena".
 - * Exposed ceilings & ducting, large windows.
 - * Beautiful brick walls, numerous windows, exceptional light.
 - * Elevator served.
 - * Controlled 24/7 building access.
 - * On-site top-rated tea & coffee house and restaurant on ground floor (Copa Vida and Dog Haus) and walking distance to numerous restaurants and retail.



For more Information, Contact:

Dan Alle

dalle@redstonecre.com

Lic. # No. 01017941

(626) 483-6358

Julie Alle

jalle@redstonecre.com

Lic. # No. 01889085

(626) 864-3927



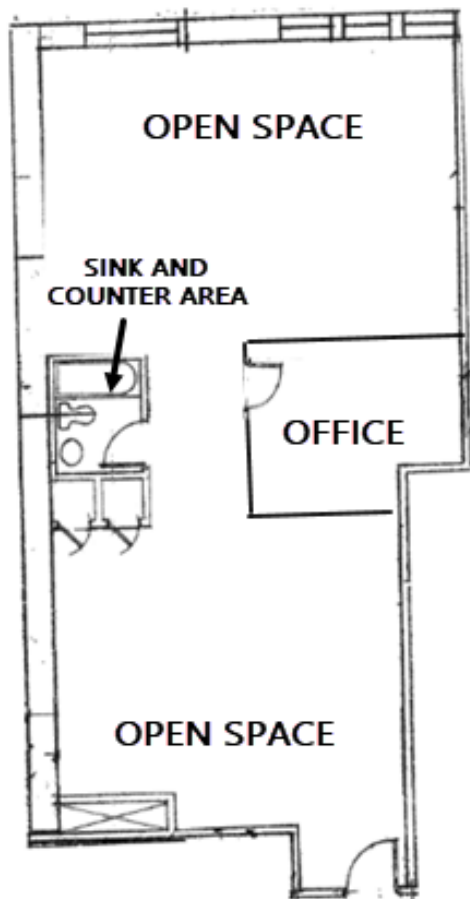
All information contained herein is from sources deemed reliable but has not been verified and is submitted without any warranty or representation, expressed or implied, as to its accuracy, and Redstone Commercial Real Estate, License #01525534, assumes no liability for errors or omissions of any kind, change of price, rental or other conditions, including, without limitation, prior sale, lease or financing or withdrawal without notice. This presentation is for information only and under no circumstances whatsoever is to be deemed a contract, note, memorandum or any other form of binding commitment.

Suite 302

Approximately 1,917 RSF

Open workspace, private office, sink and counter area, private restroom on the first level, and conference room, and storage room on second level.

1ST FLOOR

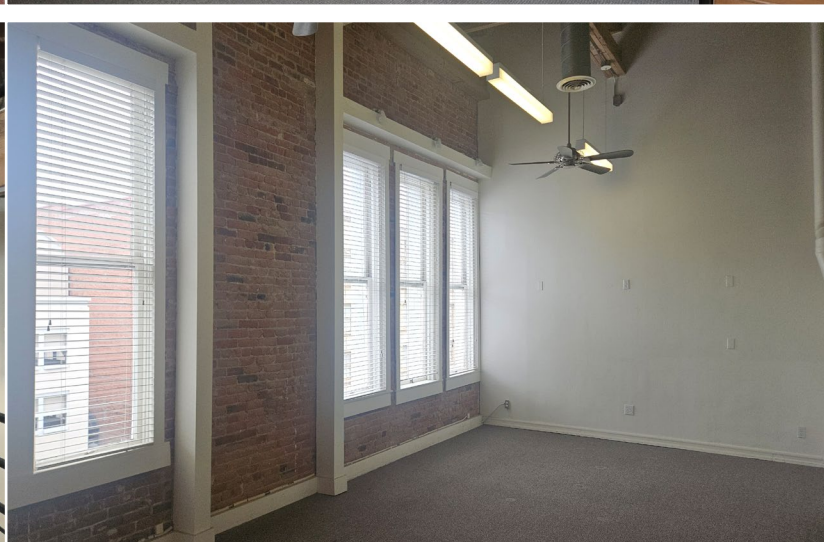
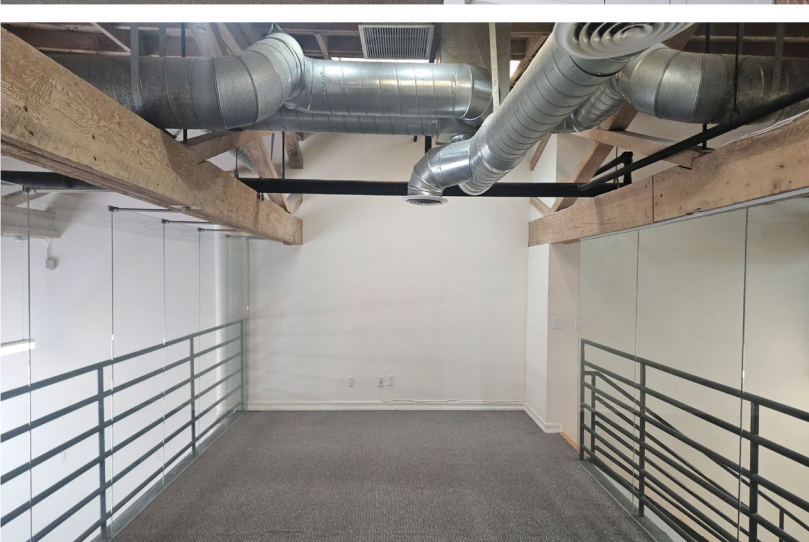
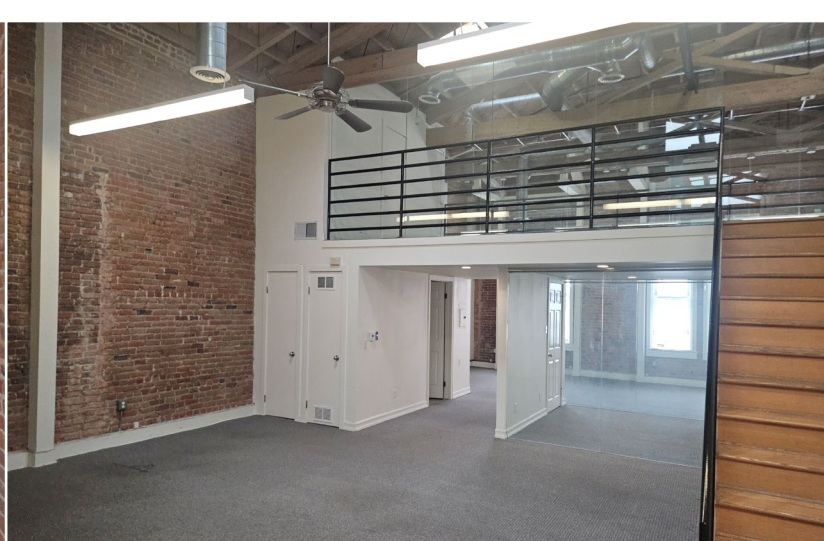
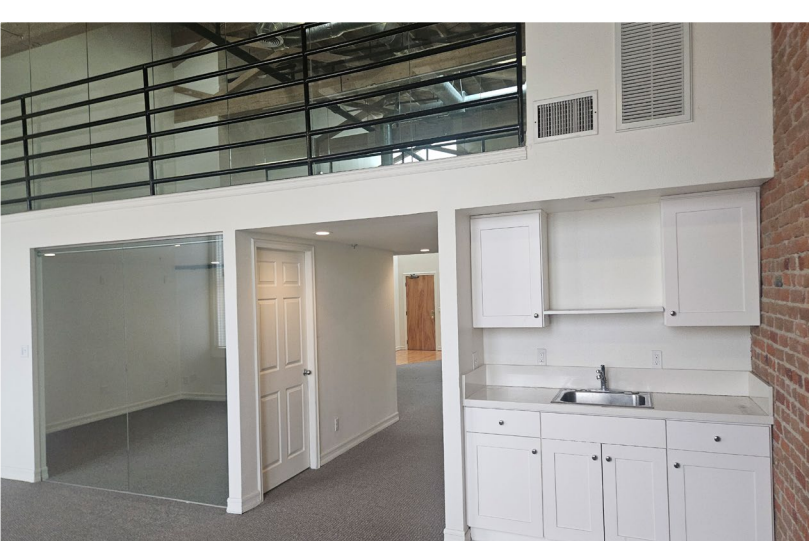
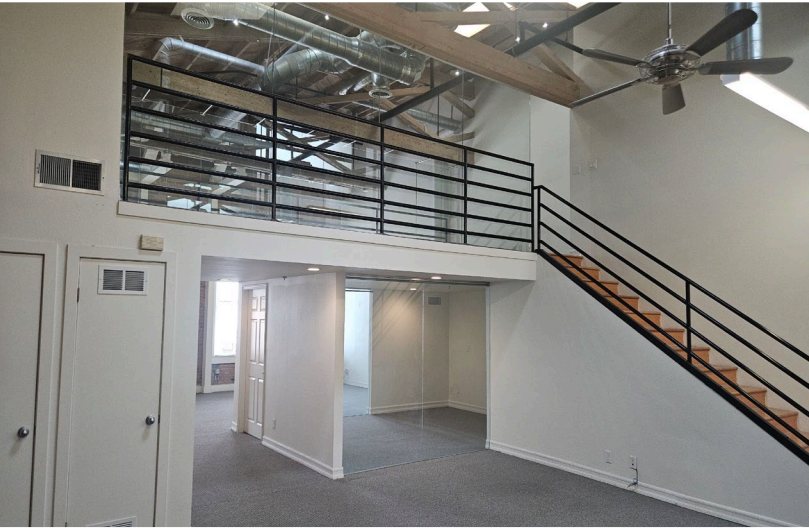


2ND FLOOR



87 E. GREEN STREET

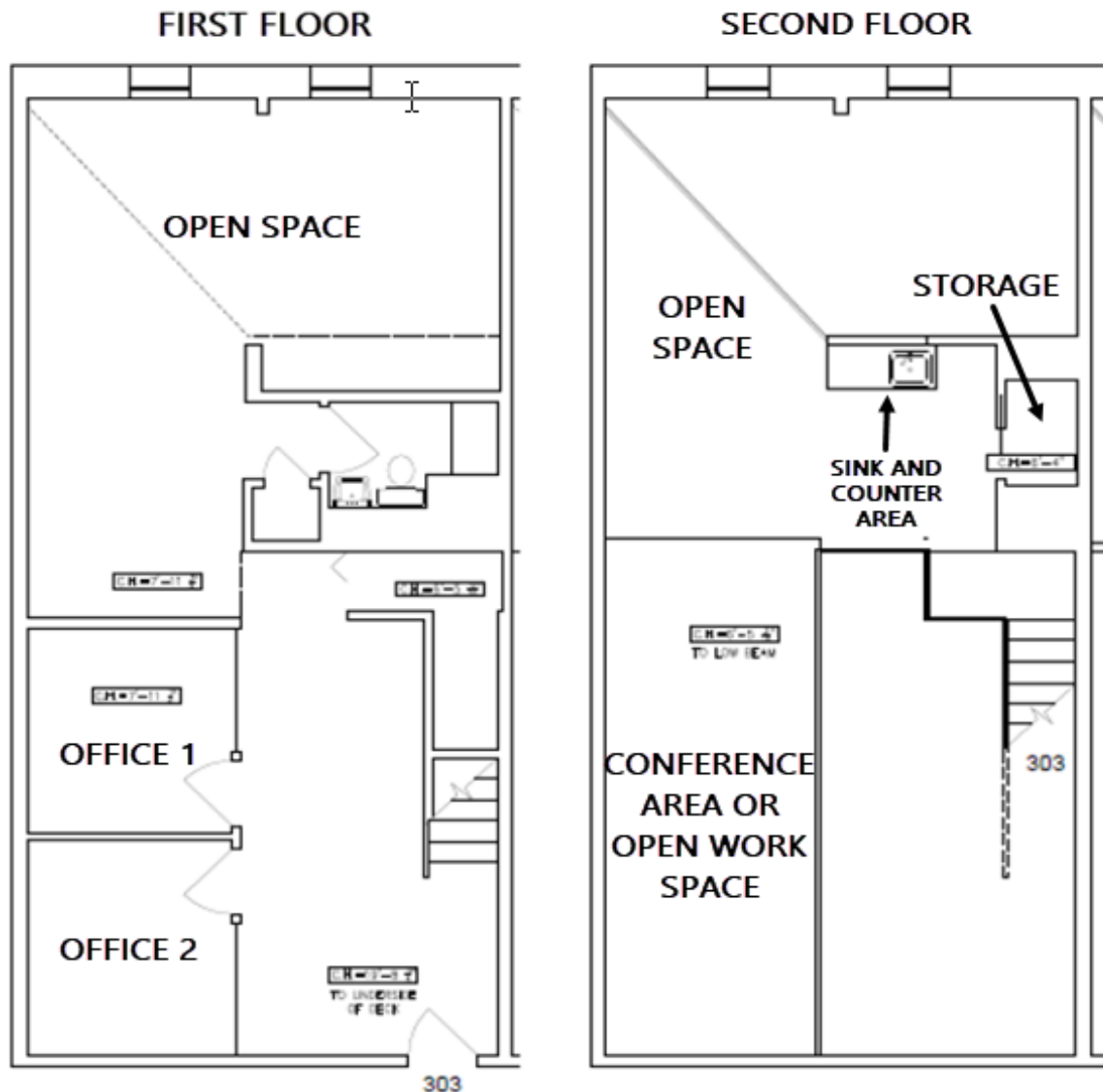
SUITE 302 - INTERIOR PHOTOS



Suite 303

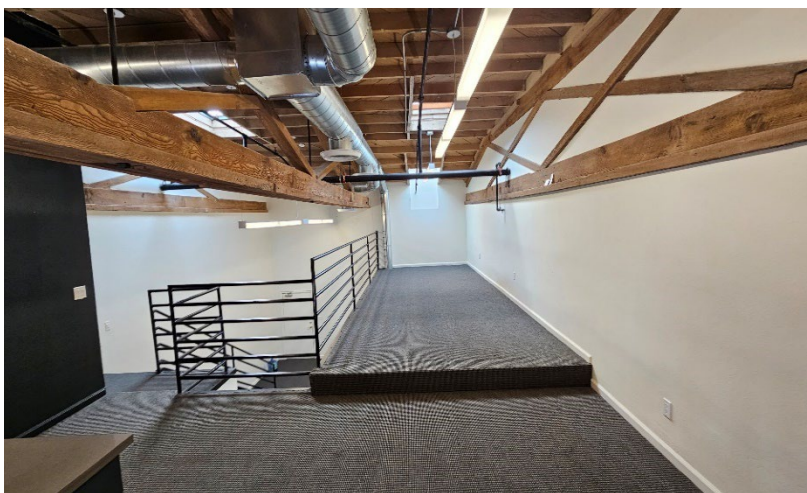
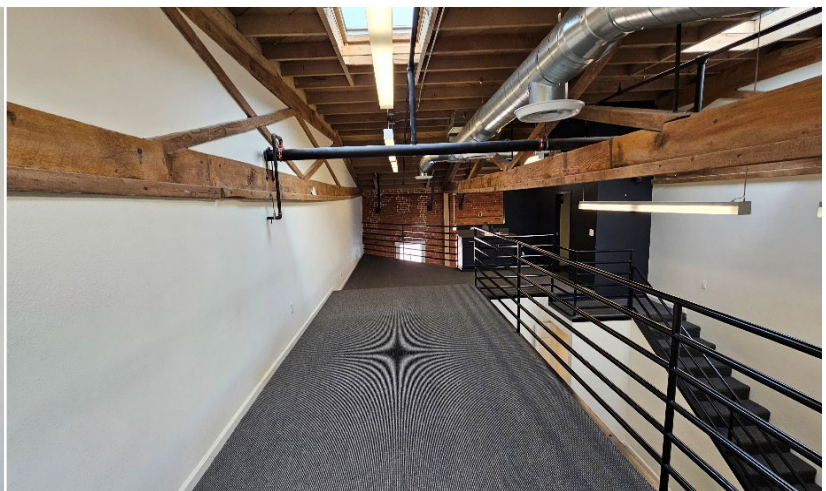
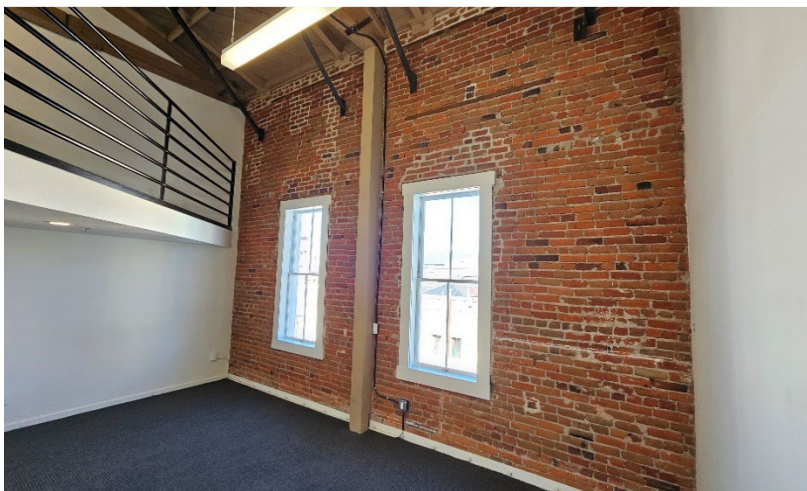
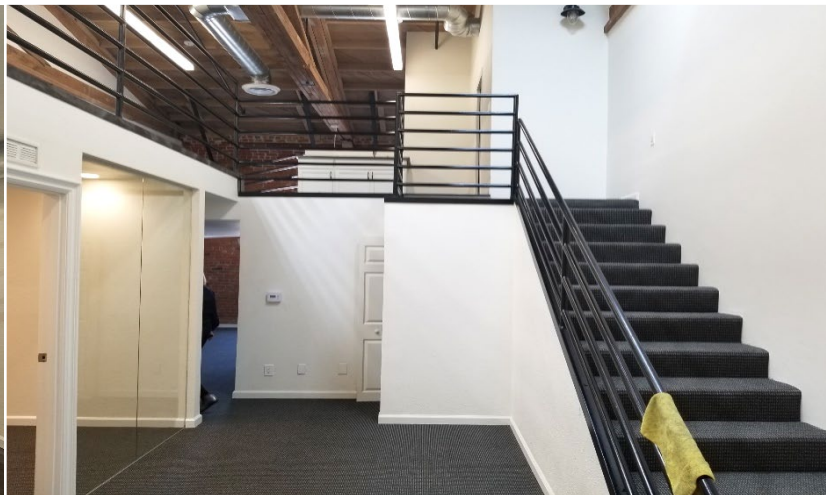
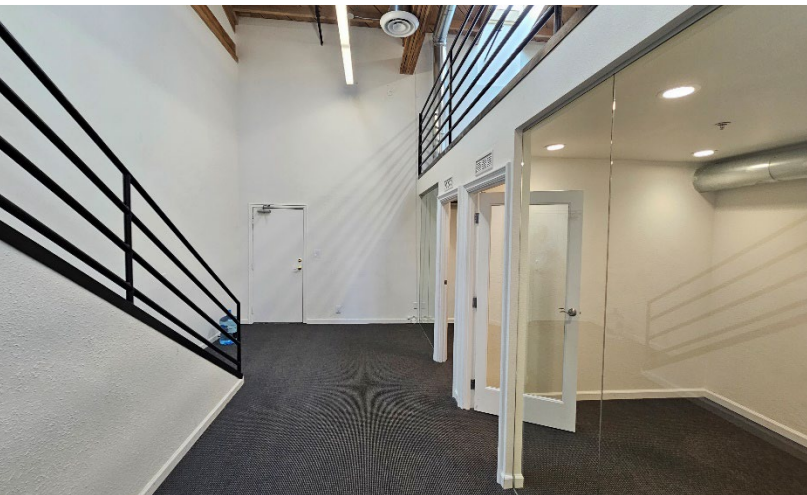
Approximately 1,715 RSF

Open space with two (2) private offices, private restroom on first floor with conference room area, sink and counter area, open space, and storage room on the second floor.



87 E. GREEN STREET

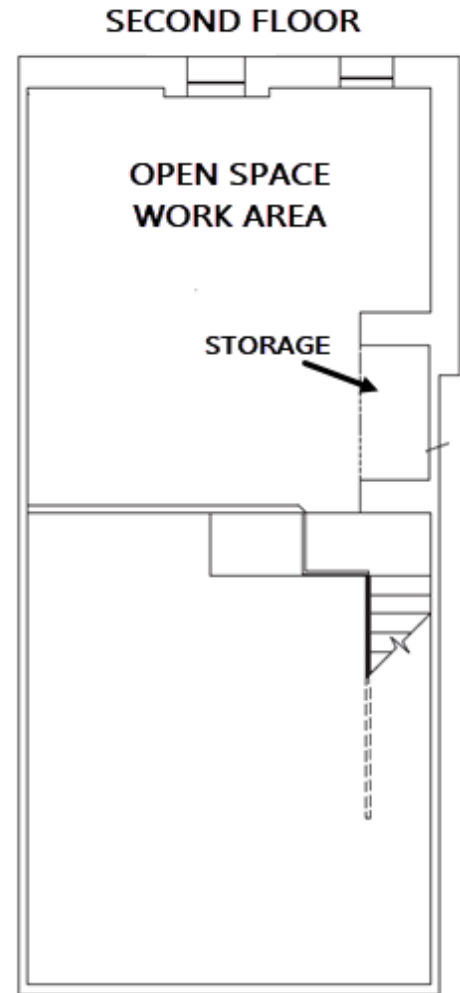
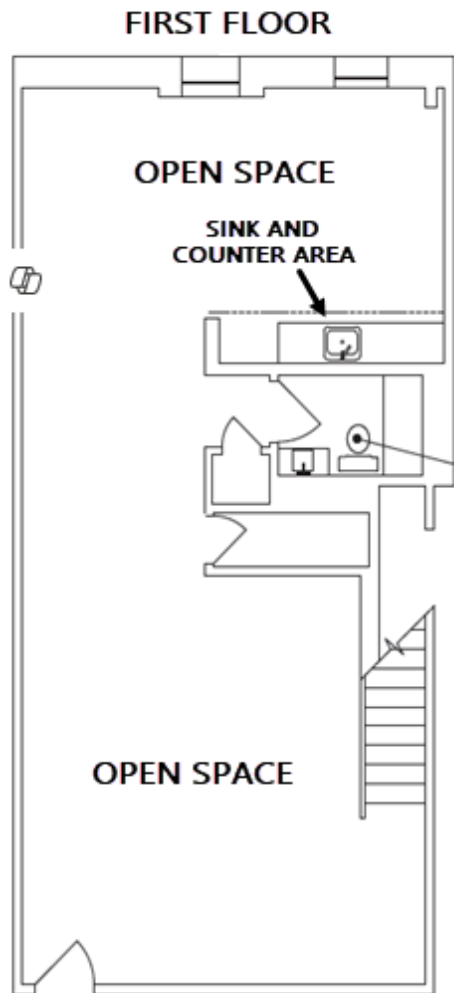
SUITE 303 - INTERIOR PICTURES



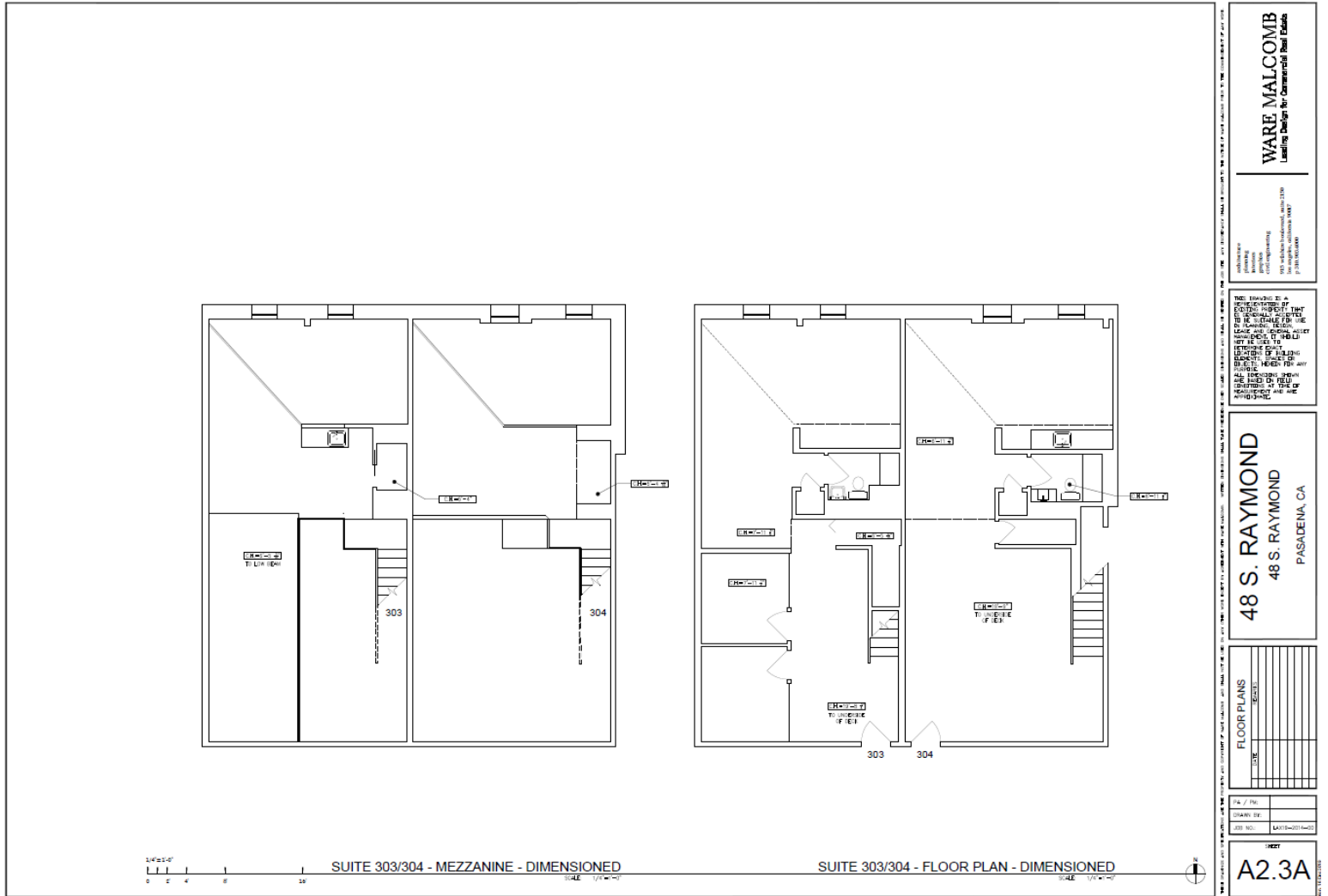
Suite 304

Approximately 1,507 RSF

Open space, private restroom, storage, and sink and counter area on the first floor with open work area and storage room on second floor.

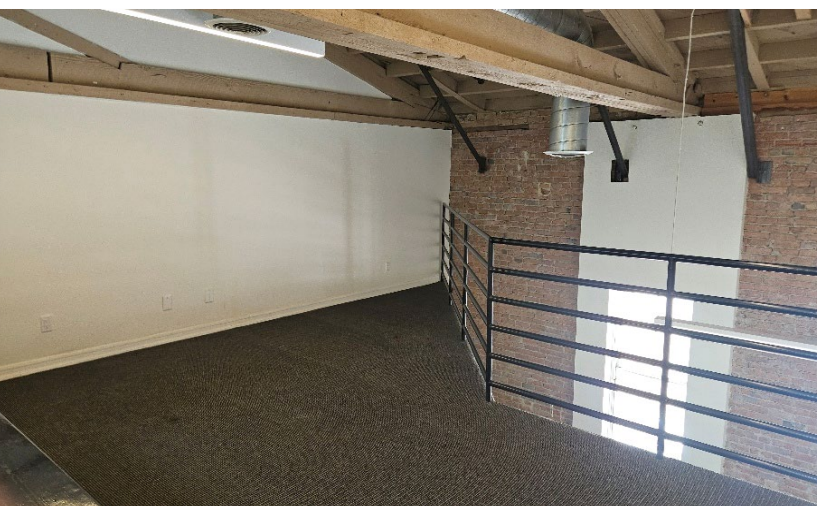
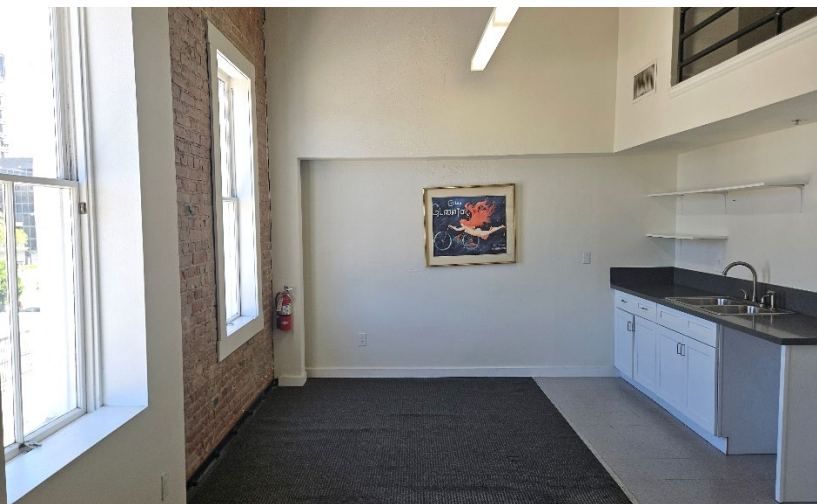
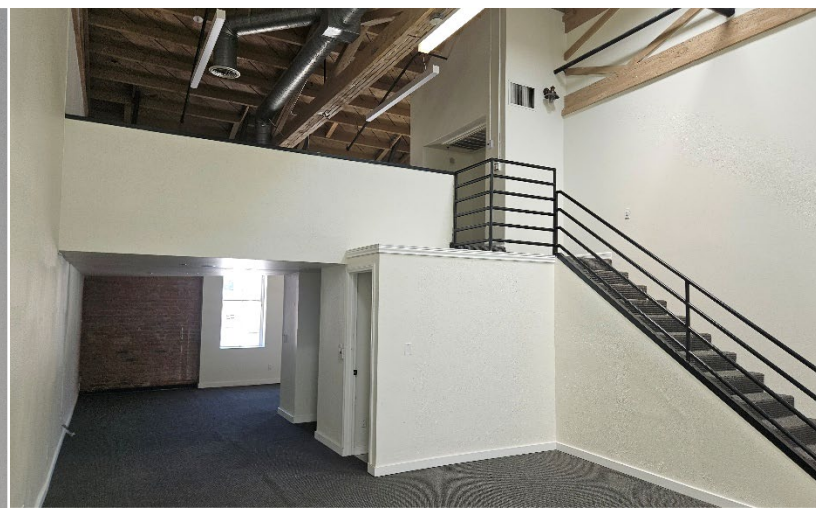
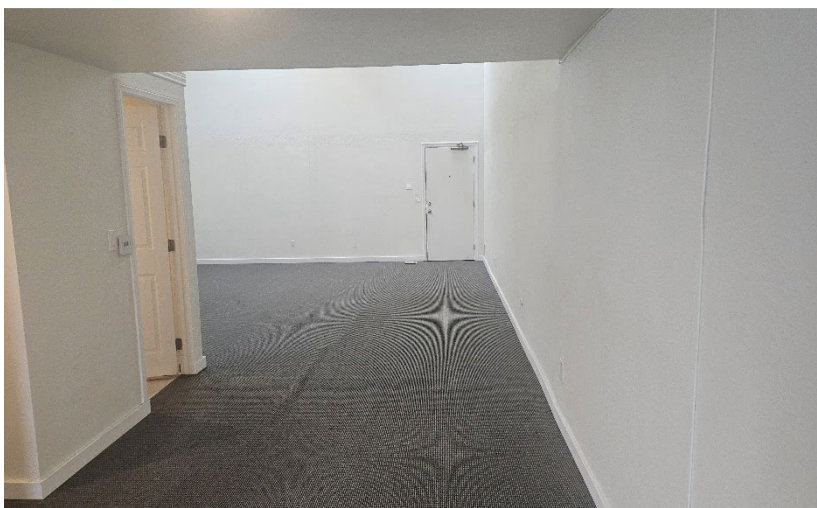


Suites 303 & 304



87 E. GREEN STREET

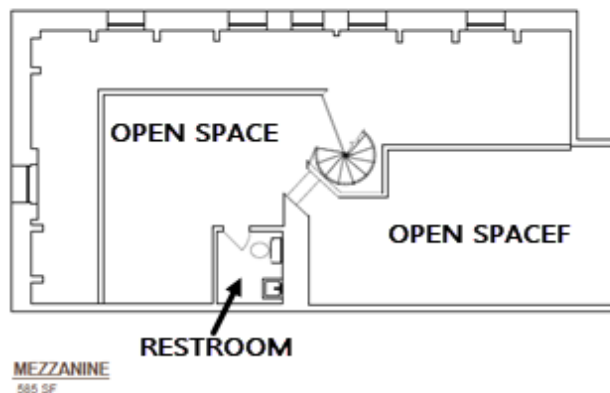
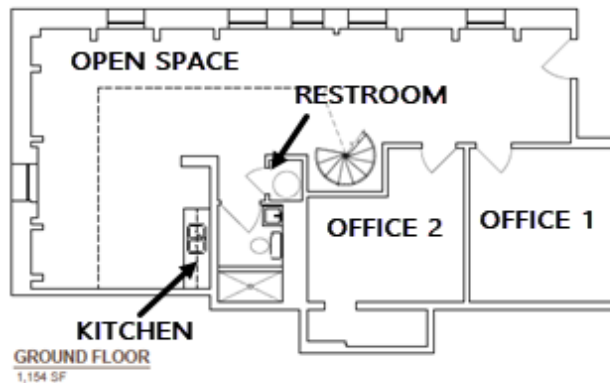
SUITE 304 - INTERIOR PICTURES



Suite 305

Approximately 1,739 RSF

Ground floor open space for cubicles or conference room, two (2) private offices, kitchen area, private restroom, and open space on the second floor with restroom.



This drawing is a representation of existing property that is generally accepted to be suitable for use in planning, design, lease and general asset management. It should not be used to determine exact locations of building elements, structural components, spaces or objects, herein for any purpose.

3/32" = 1'-0"

Measure Date: 02.17.2021
Survey Accuracy: ±1/8"



RENTABLE AREA = 1,739 SF

Suite 305 - Dimensioned

48 S. RAYMOND
PASADENA, CA

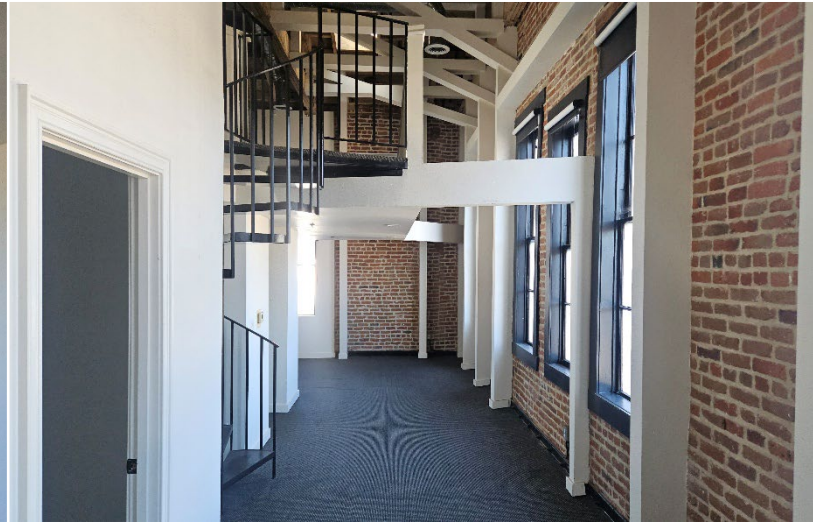
WARE MALCOMB

LAX21-2008-00
02.19.2021

SHEET
2

87 E. GREEN STREET

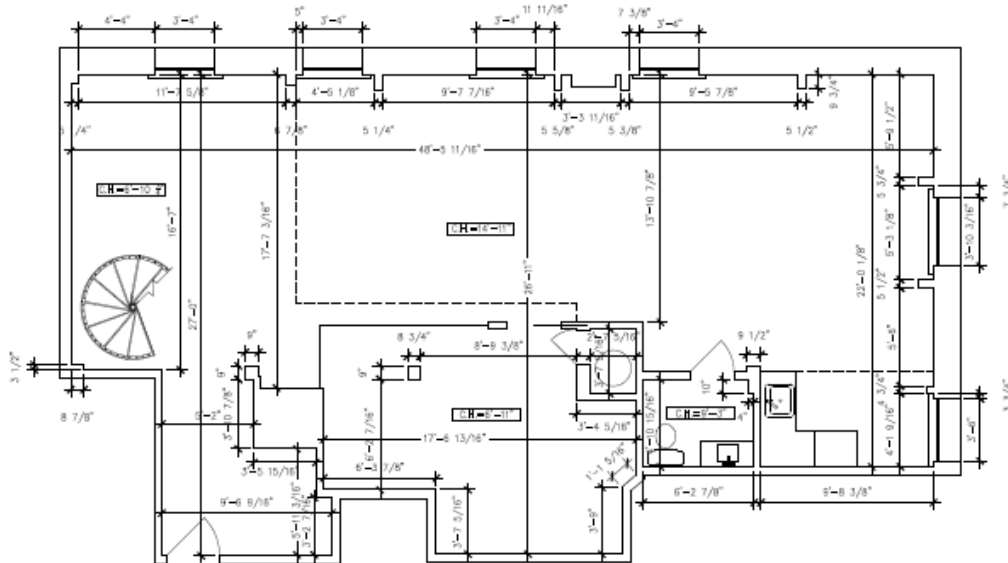
SUITE 305 - INTERIOR PICTURES



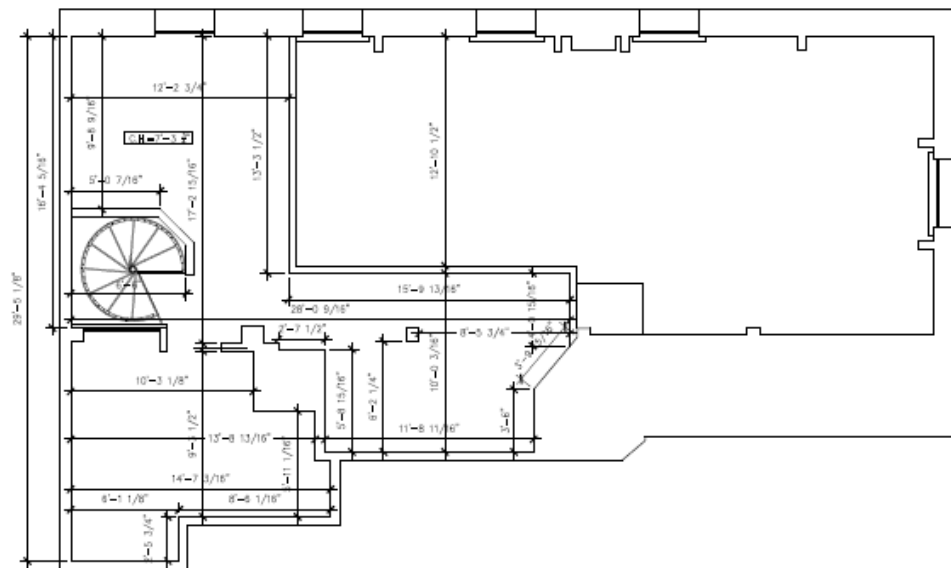
Suite 306

Approximately 1,833 RSF

Open space with glass conference room, sink and counter area, and private restroom on first floor, and open space and one (1) office on the second floor.



GROUND FLOOR



MEZZANINE

87 E. GREEN STREET

SUITE 306



FIRST FLOOR



FIRST FLOOR



CONFERENCE ROOM



KITCHENETTE



MEZZANINE

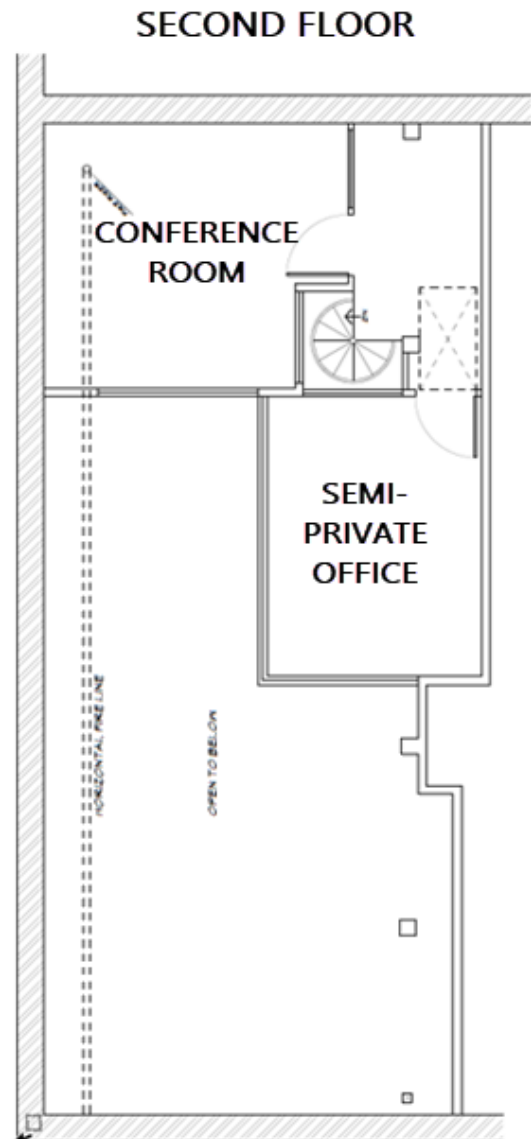
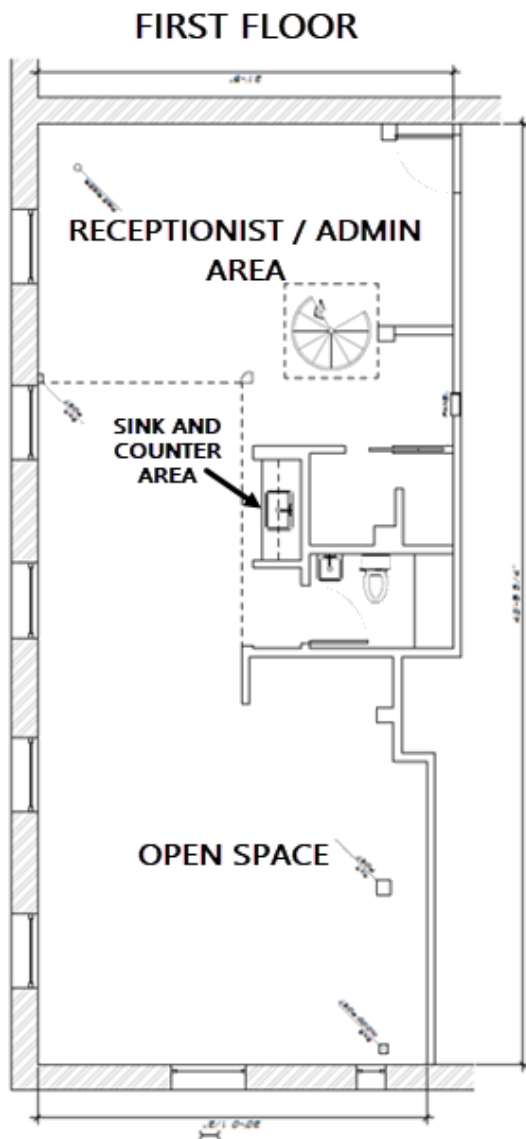


MEZZANINE AREA

Suite 309

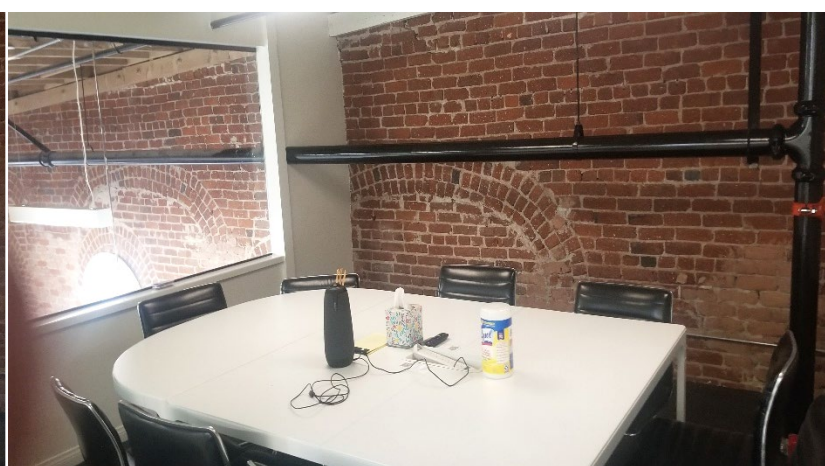
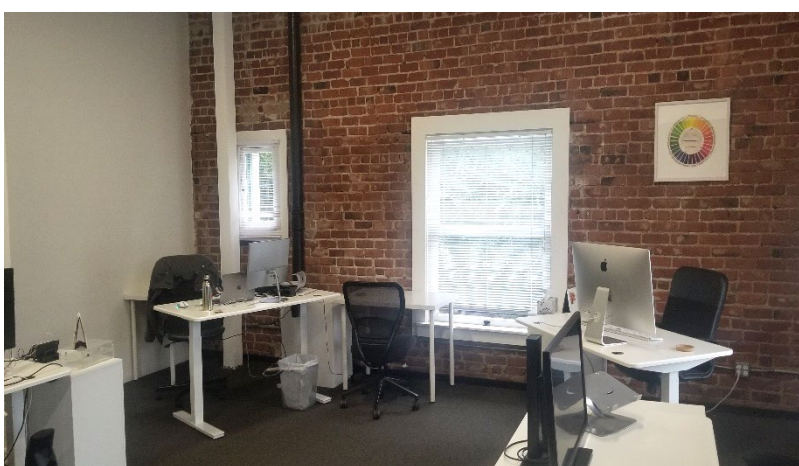
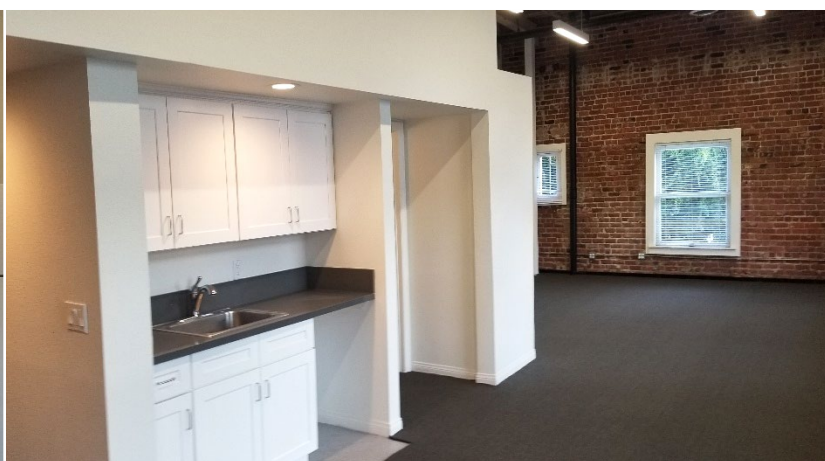
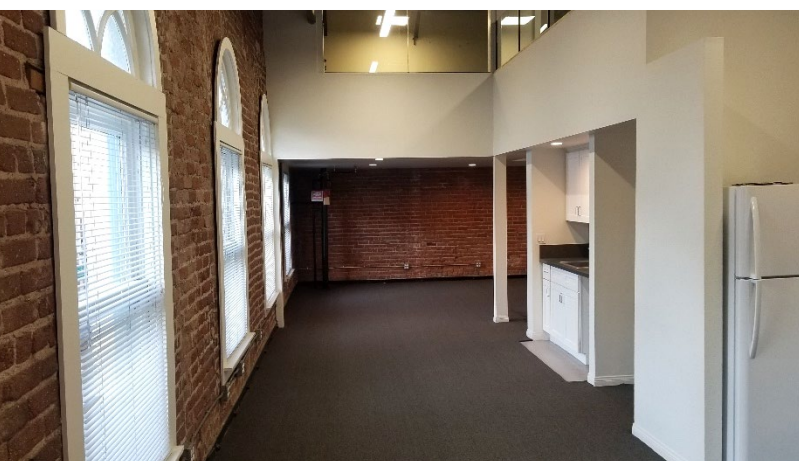
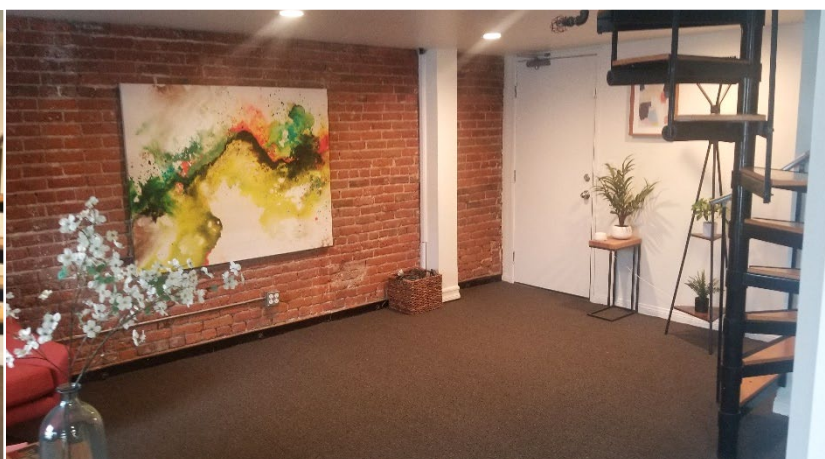
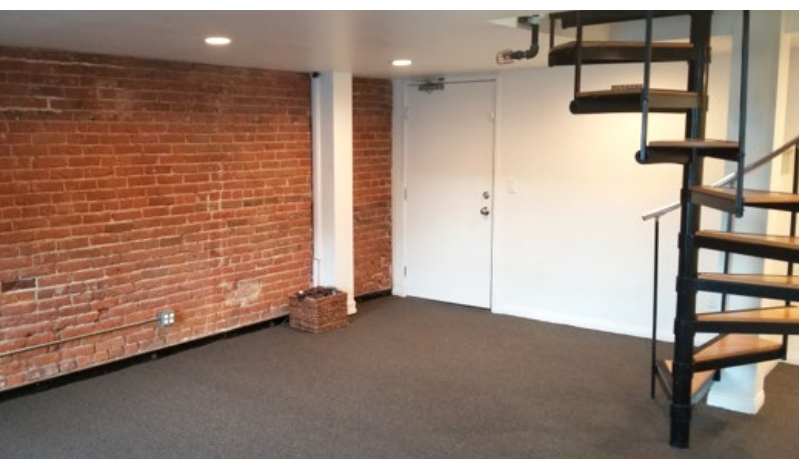
Approximately 1,856 RSF

Reception/Admin area, sink and counter area, storage and open area on first floor with conference room and semi-private office on the second floor.



87 E. GREEN STREET

SUITE 309 - INTERIOR PICTURES



AMENITY MAP

