

For Lease

Key Location Retail Space Opportunity



Location

#3 | 3189 King George Blvd
Redwood Square | Surrey

McGladery Commercial

RE/MAX Commercial Advantage

Contact

Rachel McGladery
604.290.8777
rachel@mcgladery.ca

Joshua McGladery
604.418.2690
joshua@mcgladery.ca

Perfect Size, Perfect Prize



HIGHLIGHTS

- RETAIL - Right Size & Right Price
- Busy Strip Mall on King George Blvd
- Ample Parking for Customers
- Anchored by Rona and Anytime Fitness
- Nearby retailers: Cactus Club, Choices Market, Starbuck's, Save-On Foods & HomeSense



#500-889 West Pender St. Vancouver



For Lease

Redwood Square

South Surrey

#3 - 3189 King George Blvd



- Numerous new Housing Developments within walking distance



Rachel McGladery*
rachel@mcgladery.ca
* Personal Real Estate Corporation
604.290.8777

Joshua McGladery
joshua@mcgladery.ca
604.418.2690

RE/MAX Commercial Advantage

RE/MAX
COMMERCIAL

Disclaimer: Although the information contained within is from sources believed to be reliable, no warranty or representation is made as to its accuracy being subject to errors, omissions, conditions, prior lease, withdrawal or other changes without notice and same should not be relied upon without independent verification. RE/MAX Commercial Advantage

For Lease

Redwood Square South Surrey

#3 - 3189 King George Blvd



DEMOGRAPHICS

	3 km Ring	5 km Ring	10 km Ring
Population	48,645	83,308	273,744
Households	20,012	36,629	94,389
Household Income	130,451	123,214	119,764

AVAILABILITY

Unit #	Area (sq. ft.)	Base Rent (per sq.ft.)	Additional Rent (per sq.ft.)	Monthly Rent
3	963	\$45.00	\$14.72	\$4,793 + GST

CD Zoning - Allows wide array of uses

Rachel McGladery*
rachel@mcgladery.ca
* Personal Real Estate Corporation
604.290.8777

Joshua McGladery
joshua@mcgladery.ca
604.418.2690

RE/MAX Commercial Advantage



Disclaimer: Although the information contained within is from sources believed to be reliable, no warranty or representation is made as to its accuracy being subject to errors, omissions, conditions, prior lease, withdrawal or other changes without notice and same should not be relied upon without independent verification. RE/MAX Commercial Advantage

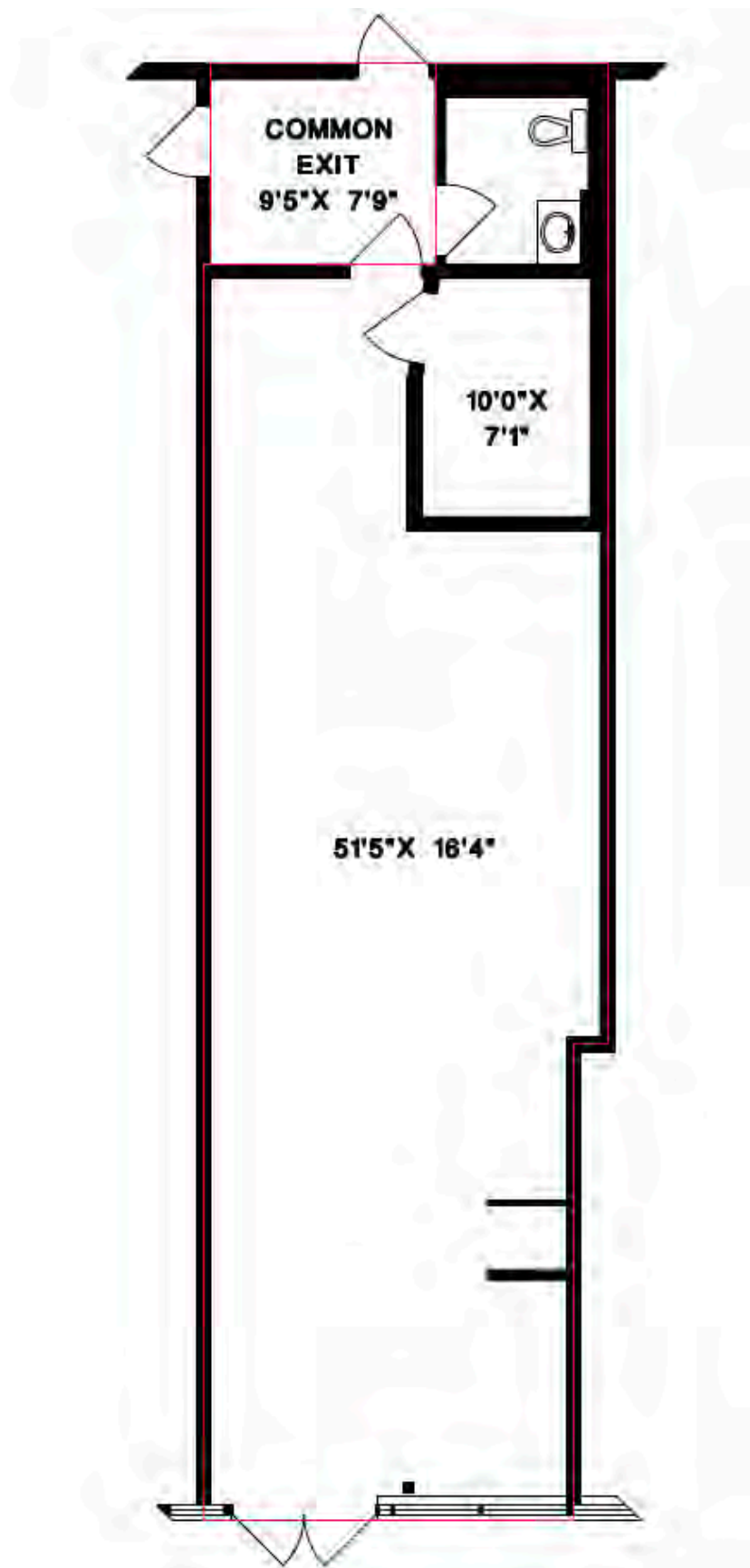
For Lease

Redwood Square

South Surrey

#3 - 3189 King George Blvd

UNIT PLAN



Rachel McGladery*
rachel@mcgladery.ca
* Personal Real Estate Corporation
604.290.8777

Joshua McGladery
joshua@mcgladery.ca
604.418.2690

RE/MAX Commercial Advantage

RE/MAX
COMMERCIAL

Disclaimer: Although the information contained within is from sources believed to be reliable, no warranty or representation is made as to its accuracy being subject to errors, omissions, conditions, prior lease, withdrawal or other changes without notice and same should not be relied upon without independent verification. RE/MAX Commercial Advantage