

# Creekside Oaks Office Park

1440 - 1470 MARIA LANE, WALNUT CREEK | CALIFORNIA



## SPACE AVAILABLE FOR LEASE

### **BUILDING 1440**

**Suite 300** ±5,423 RSF  
(Full Floor)

### **BUILDING 1460**

**Suite 420** ±1,772 RSF

### **BUILDING 1470**

**Suite 300** ±2,010 RSF

## OVERVIEW

Creekside Oaks is a multi-tenanted office park consisting of four buildings totaling approx ±92,000 rentable square feet on nearly 4.5 acres of land. Located close to downtown, Creekside Oaks lies within walking distance of Broadway Plaza, Broadway Pointe, and Plaza Escuela --destinations known for their lineup of retail stores and quality restaurants.

Creekside Oaks possesses a contemporary, timeless architectural design. A soothing landscape, including heritage oak trees and an adjacent creek, surrounds the Property and provides tenants with a tranquil retreat.

**NEWMARK**

The distributor of this communication is performing acts for which a real estate license is required. The information contained herein has been obtained from sources deemed reliable but has not been verified and no guarantee, warranty or representation, either express or implied, is made with respect to such information. Terms of sale or lease and availability are subject to change or withdrawal without notice. 12-0947 05.03.24



# Creekside Oaks Office Park

1440 - 1470 MARIA LANE, WALNUT CREEK | CALIFORNIA



## Rick Steffens

Senior Managing Director

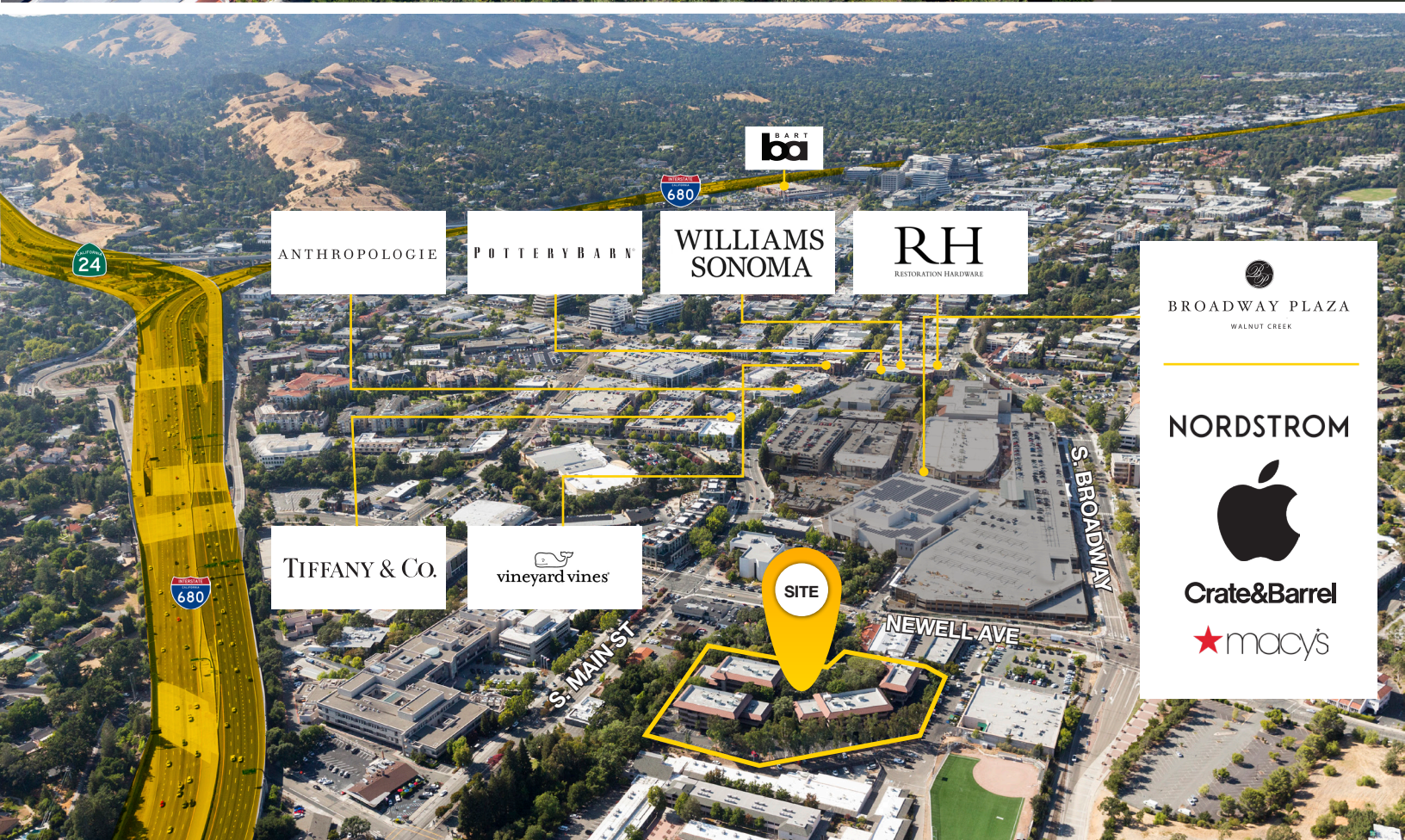
925.974.0110

rick.steffens@nmrk.com

CA RE License

#00808892

The distributor of this communication is performing



NEWMARK

1333 N. California Blvd., Suite 343, Walnut Creek, CA 94596

12-0947 05.03.24

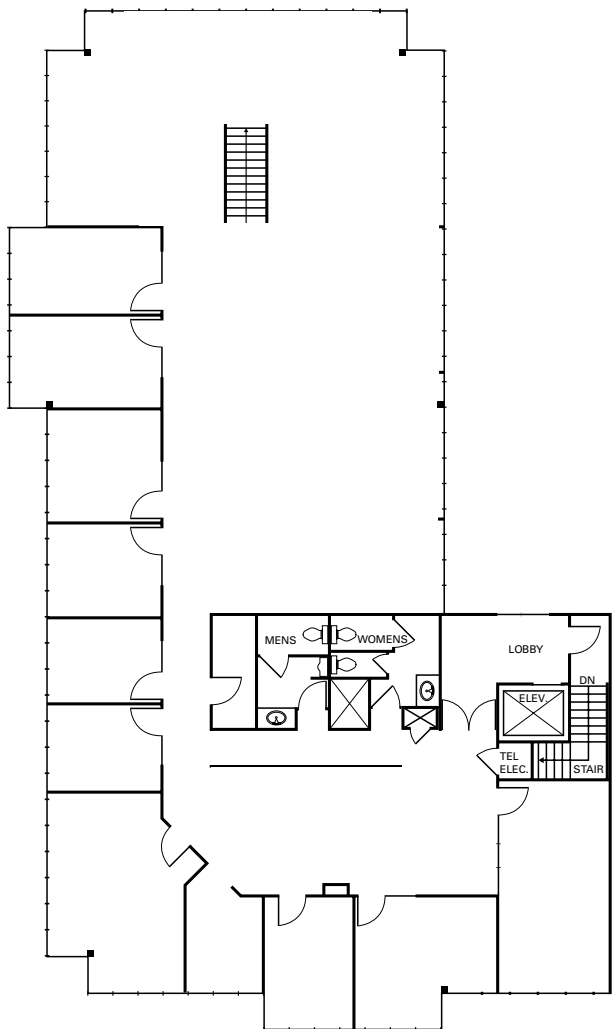


# Creekside Oaks Office Park

1440 - 1470 MARIA LANE, WALNUT CREEK | CALIFORNIA

## FLOORPLANS

1440 Maria Lane  
Suite 300 - ±5,423 RSF



Not to scale

### Rick Steffens

Senior Managing Director

925.974.0110

rick.steffens@nmrk.com

CA RE License

#00808892

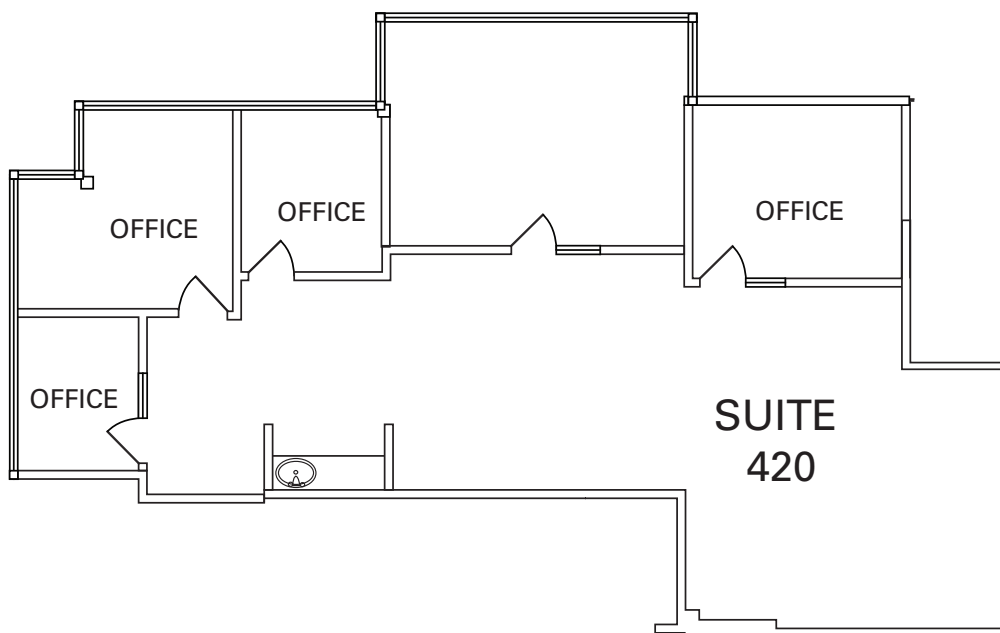
The distributor of this communication is performing acts for which a real estate license is required. The information contained herein has been obtained from sources deemed reliable but has not been verified and no guarantee, warranty or representation, either express or implied, is made with respect to such information. Terms of sale or lease and availability are subject to change or withdrawal without notice.

# Creekside Oaks Office Park

1440 - 1470 MARIA LANE, WALNUT CREEK | CALIFORNIA

## FLOORPLANS

1460 Maria Lane  
Suite 420 - ±1,772 RSF



Not to scale

### Rick Steffens

Senior Managing Director

925.974.0110

[rick.steffens@nmrk.com](mailto:rick.steffens@nmrk.com)

CA RE License

#00808892

The distributor of this communication is performing acts for which a real estate license is required. The information contained herein has been obtained from sources deemed reliable but has not been verified and no guarantee, warranty or representation, either express or implied, is made with respect to such information. Terms of sale or lease and availability are subject to change or withdrawal without notice.

# Creekside Oaks Office Park

1440 - 1470 MARIA LANE, WALNUT CREEK | CALIFORNIA

## Rick Steffens

Senior Managing Director

925.974.0110

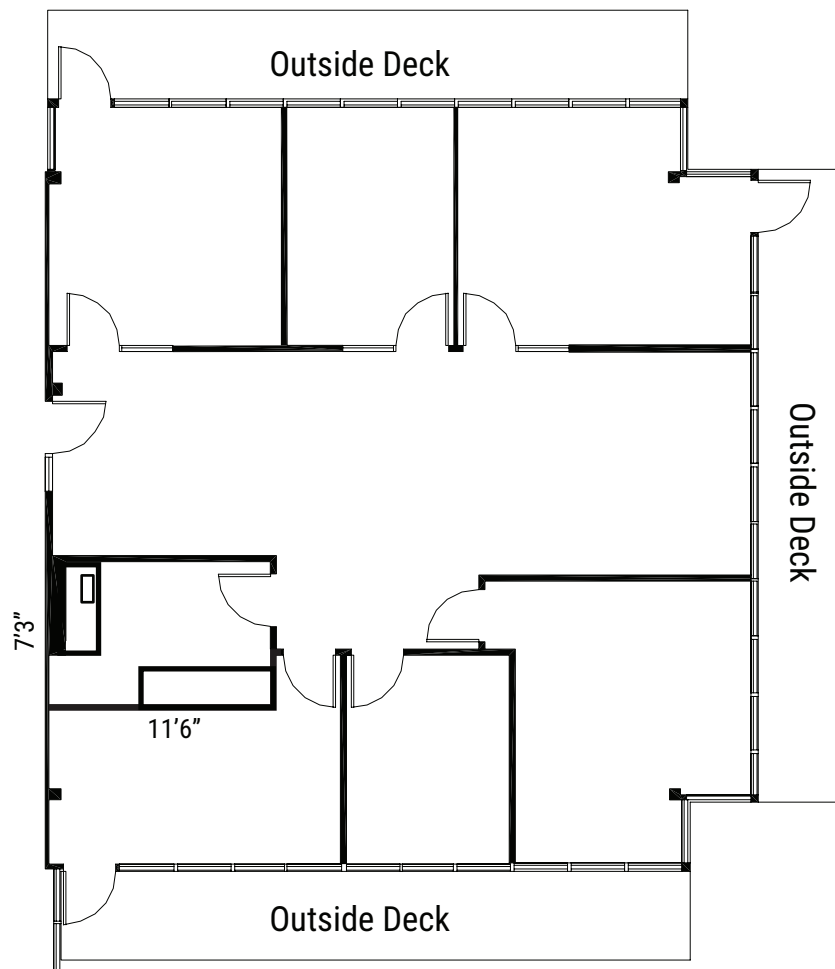
rick.steffens@nmrk.com

CA RE License

#00808892

## FLOORPLANS

1470 Maria Lane  
Suite 300 - ±2,010 RSF



Not to scale

The distributor of this communication is performing acts for which a real estate license is required. The information contained herein has been obtained from sources deemed reliable but has not been verified and no guarantee, warranty or representation, either express or implied, is made with respect to such information. Terms of sale or lease and availability are subject to change or withdrawal without notice.