

# TRUE COLORS REIMAGINED

ely

By  
Elysian  
Living





For those with an affinity for the arts, we present **Ely on Fremont**. An unparalleled residential community ideally located in the heart of Fremont East District.

Conceptualized by Calida Studios, known for their sophisticated, modern design aesthetic, these luxurious apartment homes celebrate the spirit of urban cultural living at its best. Expressive and unique, these studio, one, two and three-bedroom residences are well-appointed with designer fixtures, stainless-steel appliances, quartz countertops, washer and dryers as well as impressive views of Downtown and the Strip!

All brochure photography is from Ely at Buffalo. Ely on Fremont images coming soon once construction has been completed.





Looking to optimize a work-life balance? Ely on Fremont also features a selection of spacious Live/Work units!



Immerse yourself in our highly social lifestyle with an enviable selection of exclusive on and offsite events. Appreciate the grounds that pay homage to the arts with hand painted murals and industrial accents. Take your fitness regimen to the next level in the yoga and spin studio. Cool off and decompress at the resort-style lap pool and spa. Then, as the day winds down, raise a glass to the good life at the outdoor lounge with lawn games and fire pits!



All brochure photography is from Ely at Buffalo. Ely on Fremont images coming soon once construction has been completed.





Attuned to your every need, Ely on Fremont is thoughtfully created with your convenience in mind. Just minutes away, you'll find the best art galleries, artisanal dining, coffee shops, shopping, entertainment, parks and more, with easy access to I-15.

All brochure photography is from Ely at Buffalo. Ely on Fremont images coming soon once construction has been completed.





# CONTEMPORARY

## COMMUNITY FEATURES

- Designed by Calida Studios
- Resort-style lap pool and spa
- State-of-the-art fitness center with reclaimed floors
- Yoga and Spin studio
- Outdoor seating with BBQ
- Outdoor lounge with lawn games and fire pits
- Resident clubhouse
- Media lounge with video wall
- Internet café with workspaces
- Covered parking
- Smoke-free community
- Pet friendly
- Professional on-site management and maintenance
- Online leasing and applications
- Online rent payments and service requests

## RESIDENCE AMENITIES

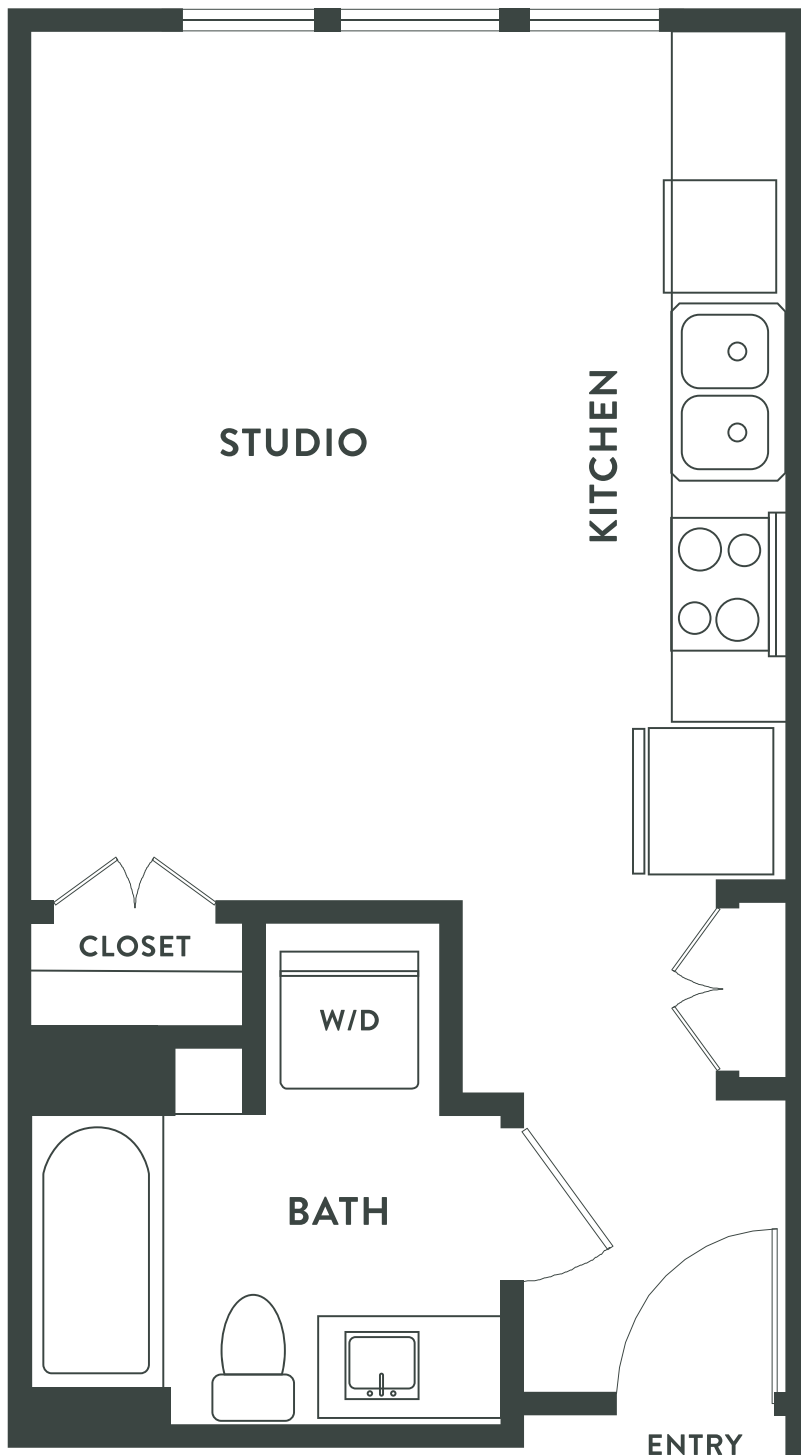
- Spacious one, two and three-bedroom apartment homes and live/work spaces
- Open concept living areas
- Quartz counter tops
- Stainless steel appliance package
- Two-tone paint
- Distinctive wood-style flooring and plush carpeting
- Full size washer and dryer in apartment
- Expansive 10-foot ceilings
- Patio or balcony



## S1 Studio

Approximately 395 sq. ft.

Square footage is approximate and may vary by unit.  
Availability and pricing subject to change.

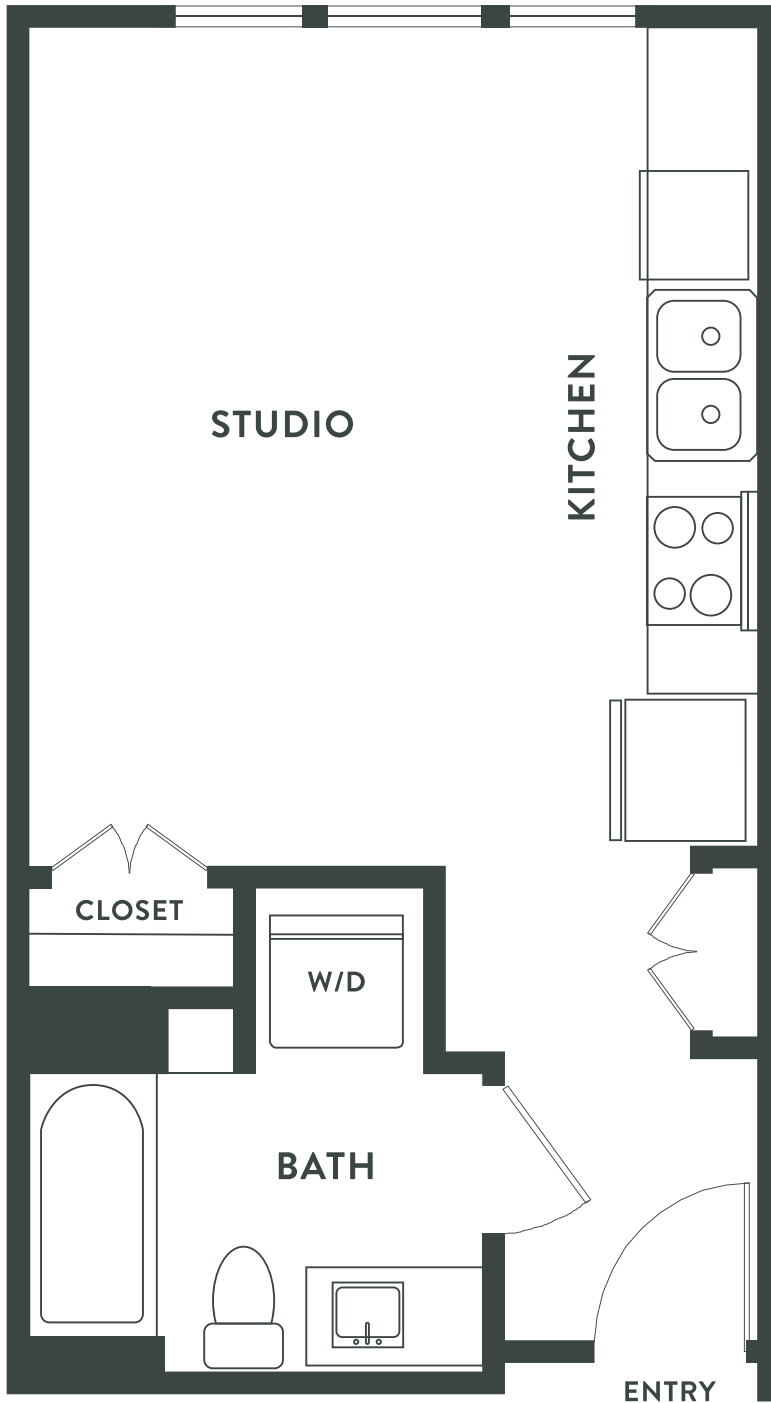




## S1 ALT Studio

Approximately 489 sq. ft.

Square footage is approximate and may vary by unit.  
Availability and pricing subject to change.





# A1 Studio

Approximately 661 sq. ft.

Square footage is approximate and may vary by unit.  
Availability and pricing subject to change.



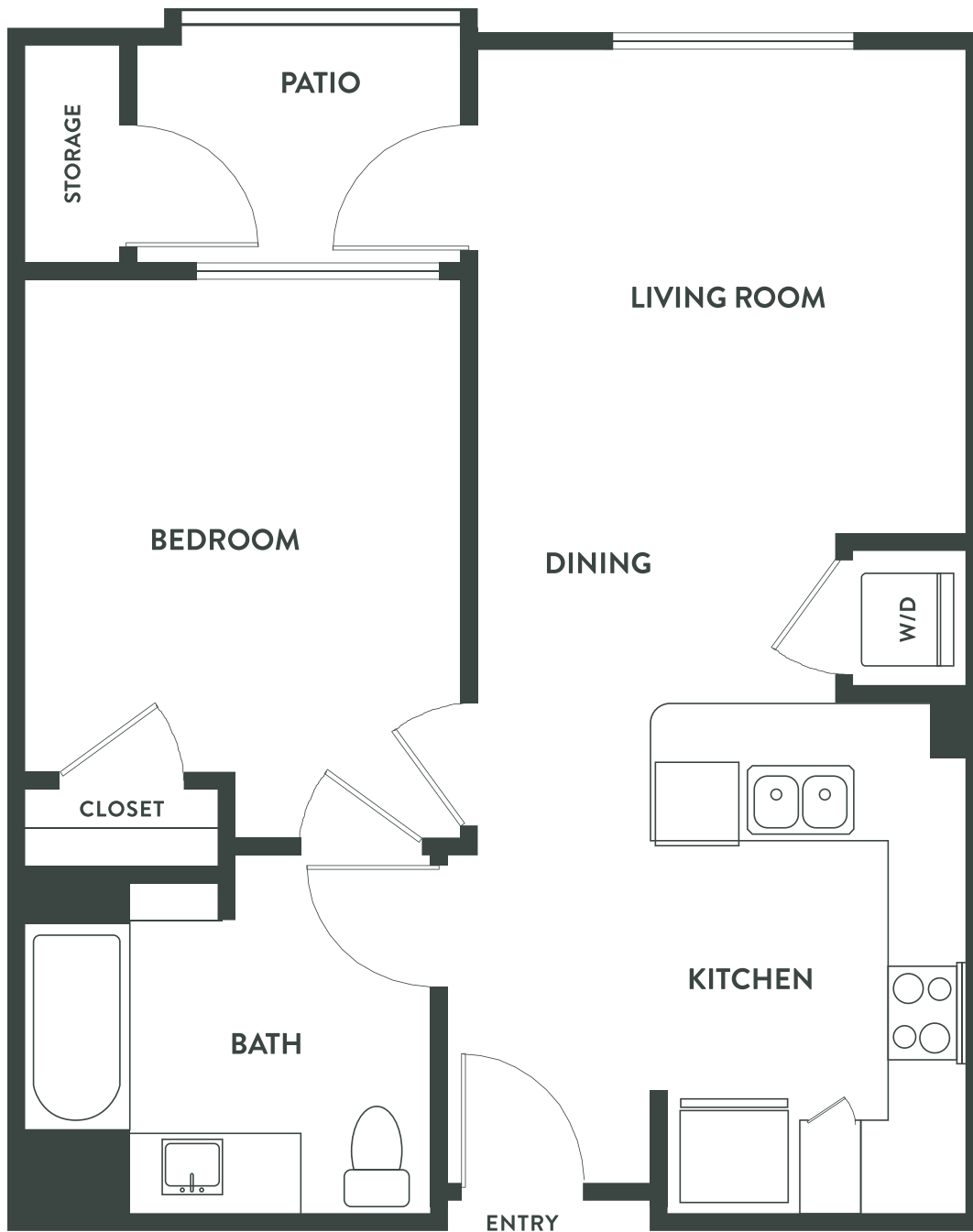


## A1 ANSI

### 1 Bedroom / 1 Bathroom

Approximately 658 sq. ft.

Square footage is approximate and may vary by unit.  
Availability and pricing subject to change.



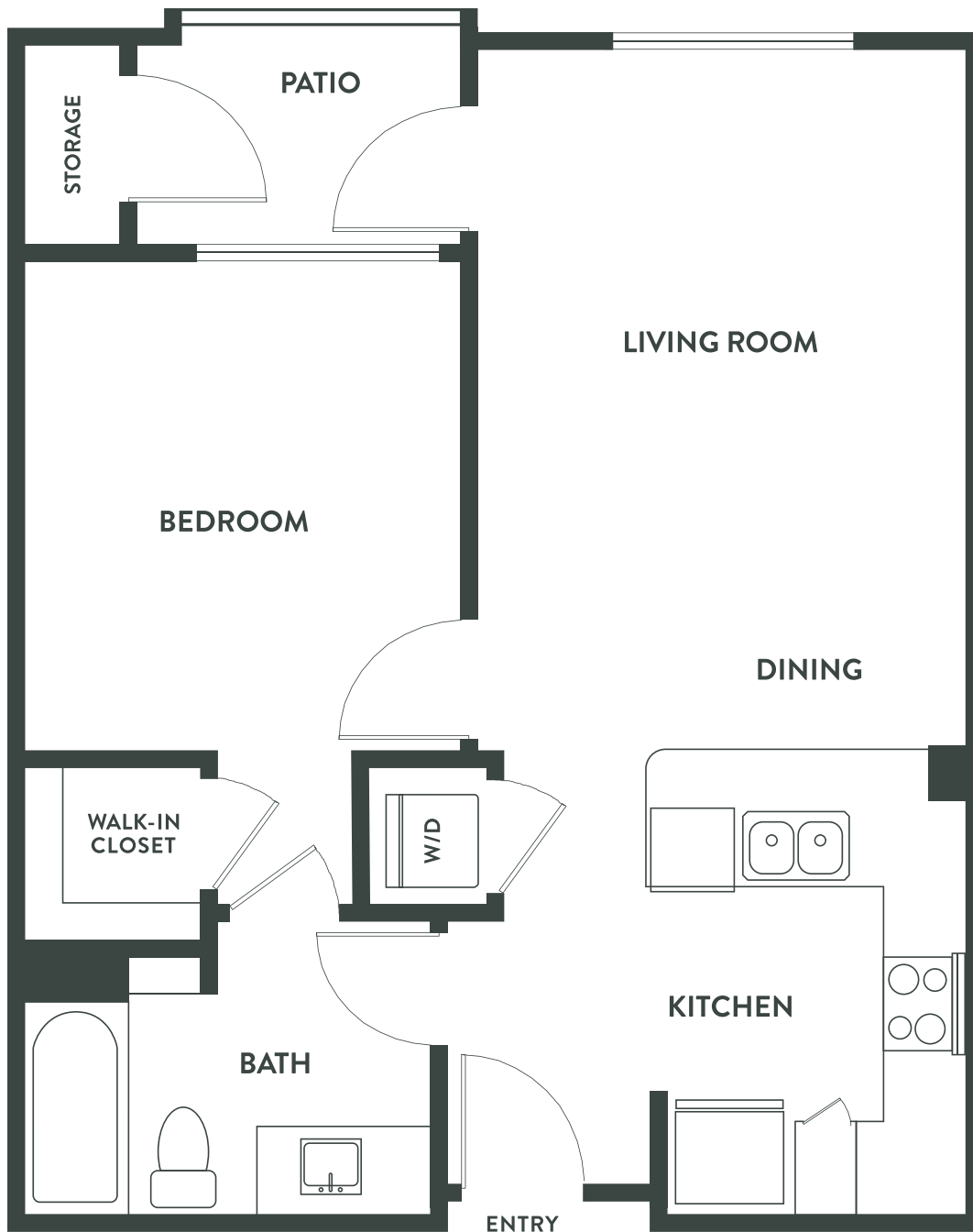


**A2**

**1 Bedroom / 1 Bathroom**

Approximately 707 sq. ft.

Square footage is approximate and may vary by unit.  
Availability and pricing subject to change.



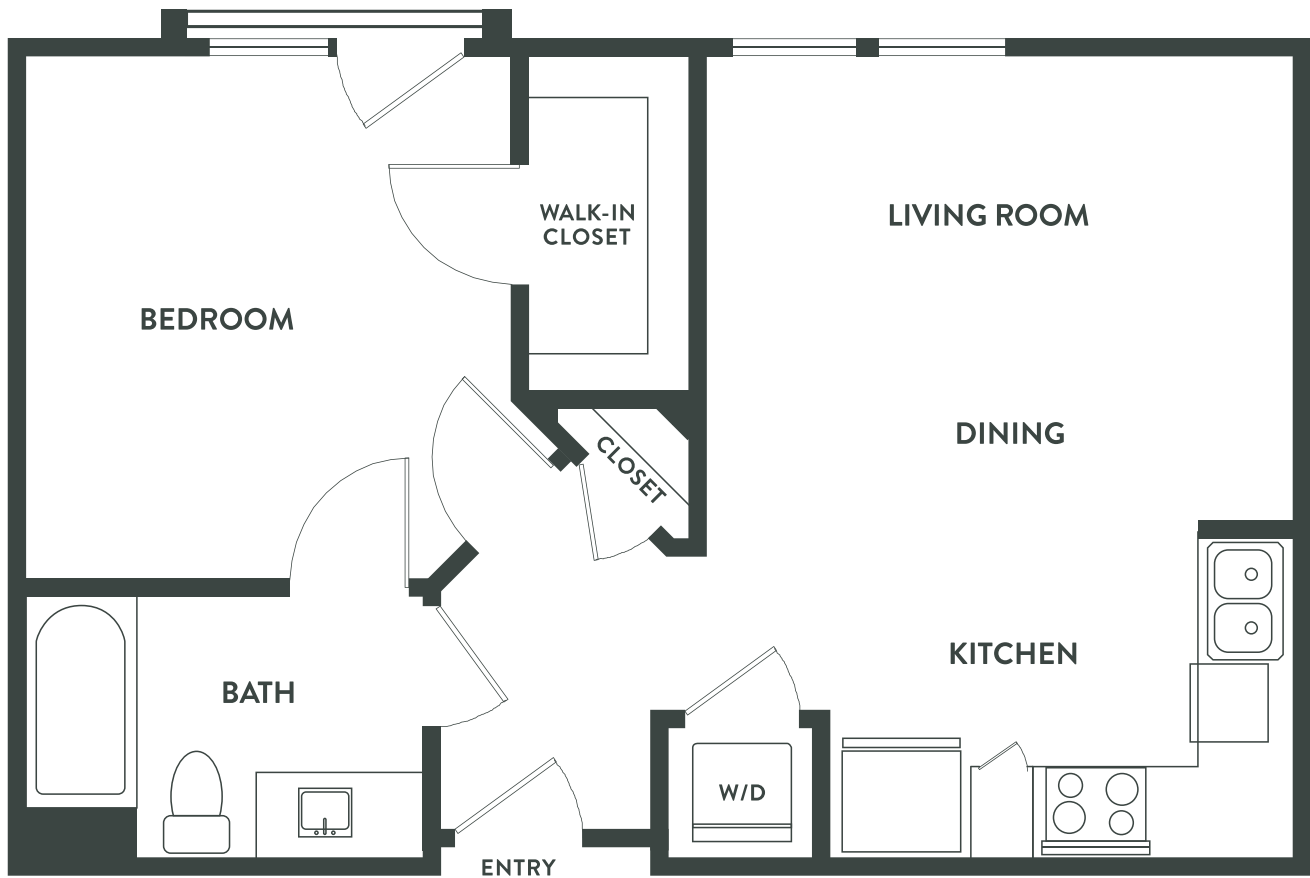


**A3**

**1 Bedroom / 1 Bathroom**

Approximately 613 sq. ft.

Square footage is approximate and may vary by unit.  
Availability and pricing subject to change.



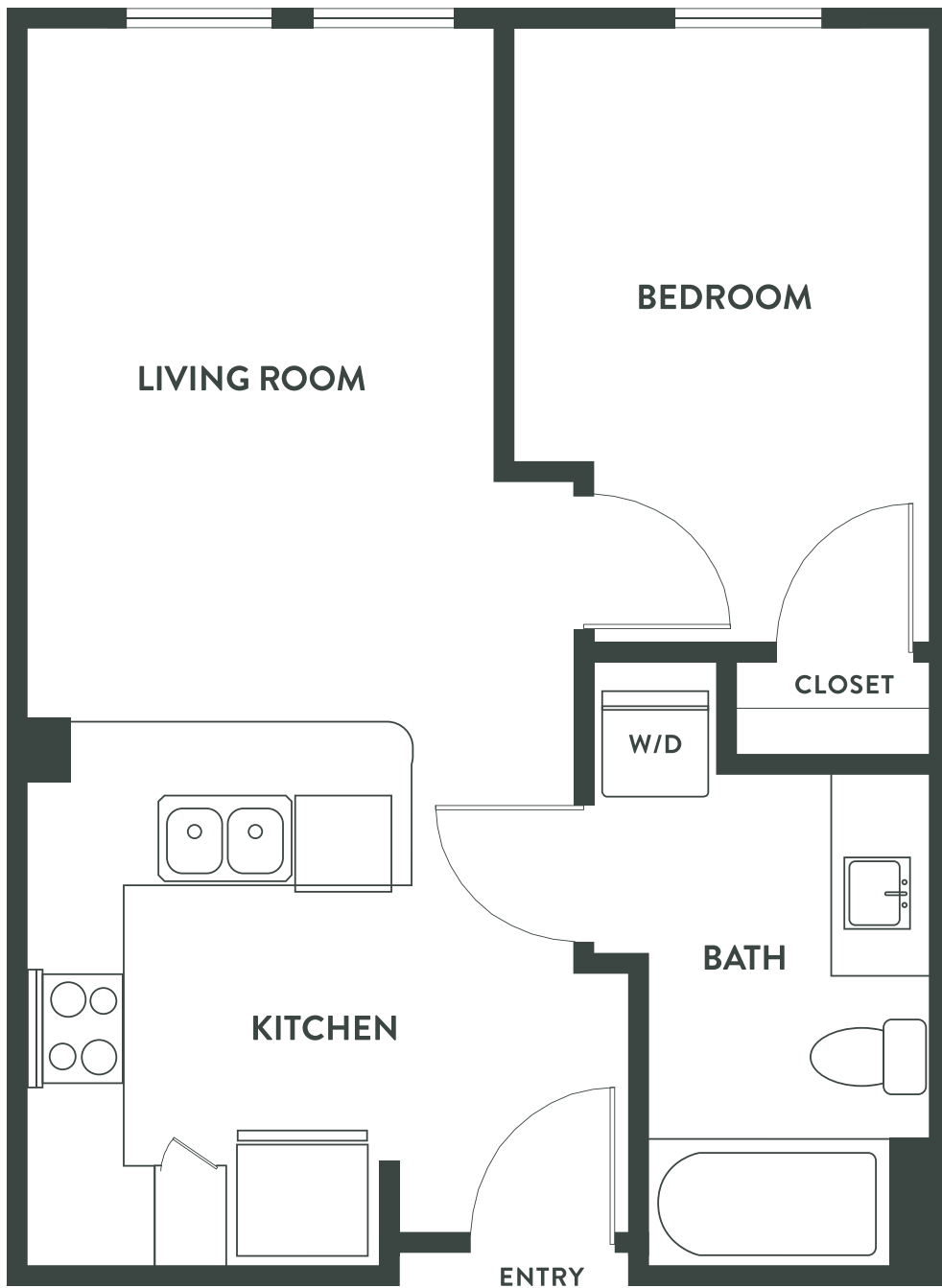


**A4**

**1 Bedroom / 1 Bathroom**

Approximately 527 sq. ft.

Square footage is approximate and may vary by unit.  
Availability and pricing subject to change.



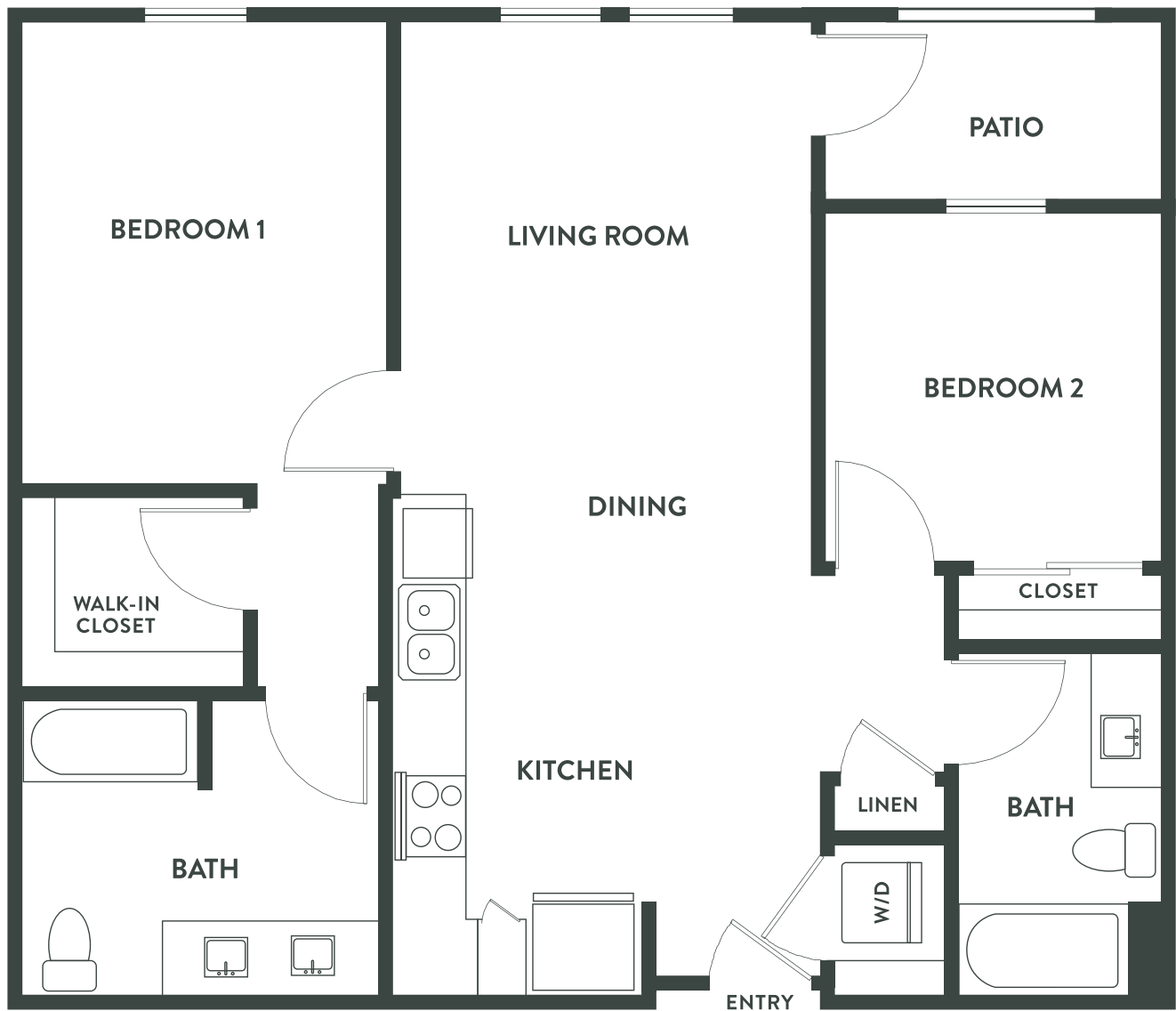


**B1**

**2 Bedroom / 2 Bathroom**

Approximately 952 sq. ft.

Square footage is approximate and may vary by unit.  
Availability and pricing subject to change.

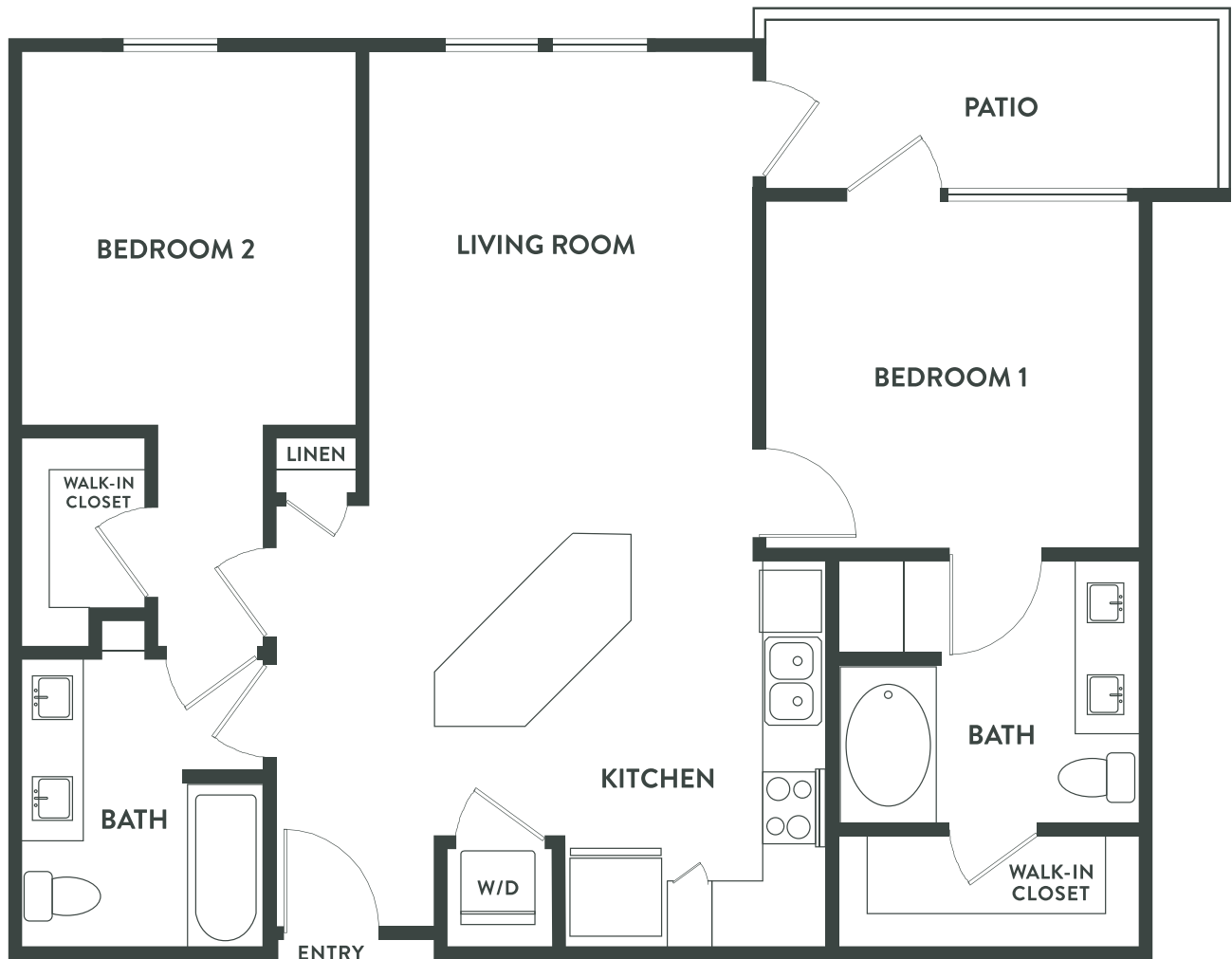


## B2

### 2 Bedroom / 2 Bathroom

Approximately 1,016 sq. ft.

Square footage is approximate and may vary by unit.  
Availability and pricing subject to change.



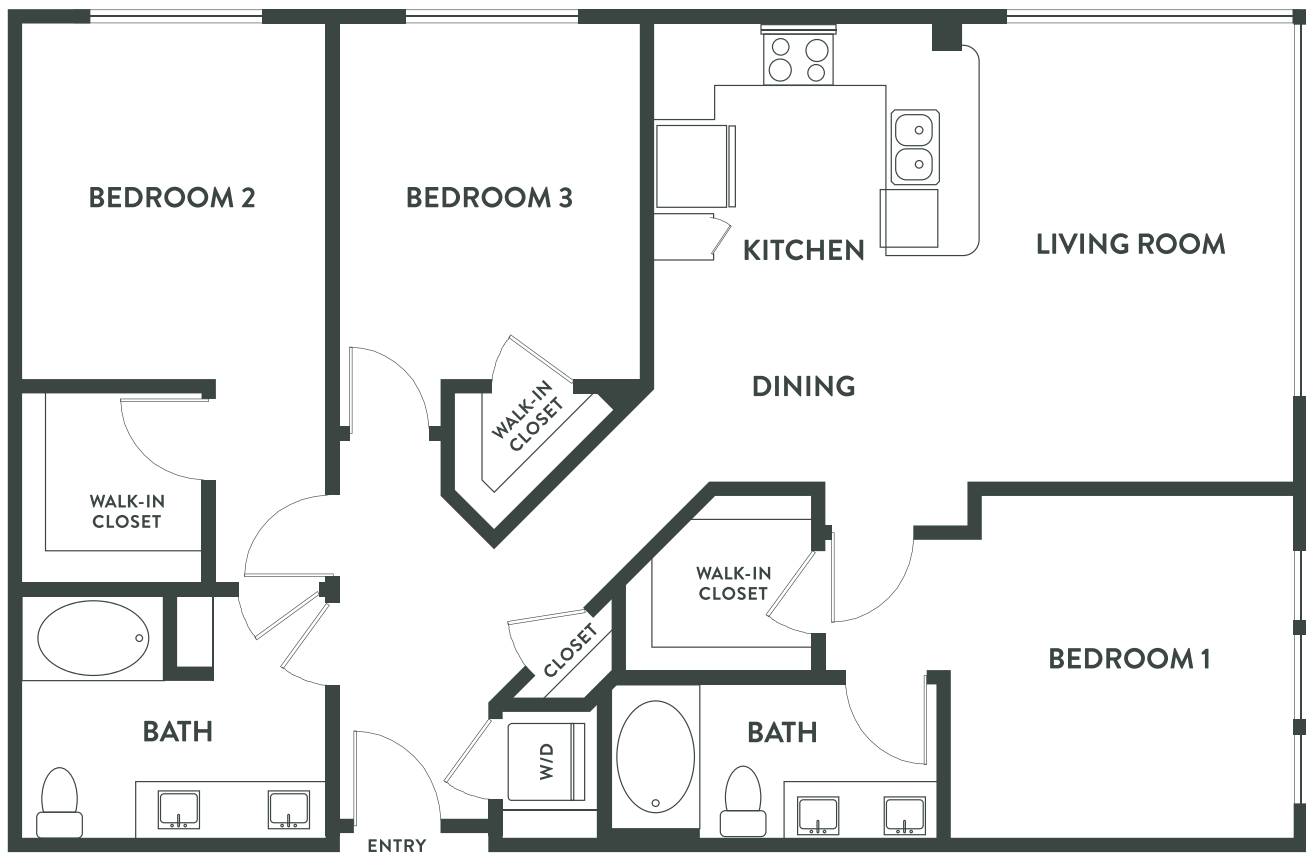


**C1**

**3 Bedroom / 2 Bathroom**

Approximately 1,330 sq. ft.

Square footage is approximate and may vary by unit.  
Availability and pricing subject to change.

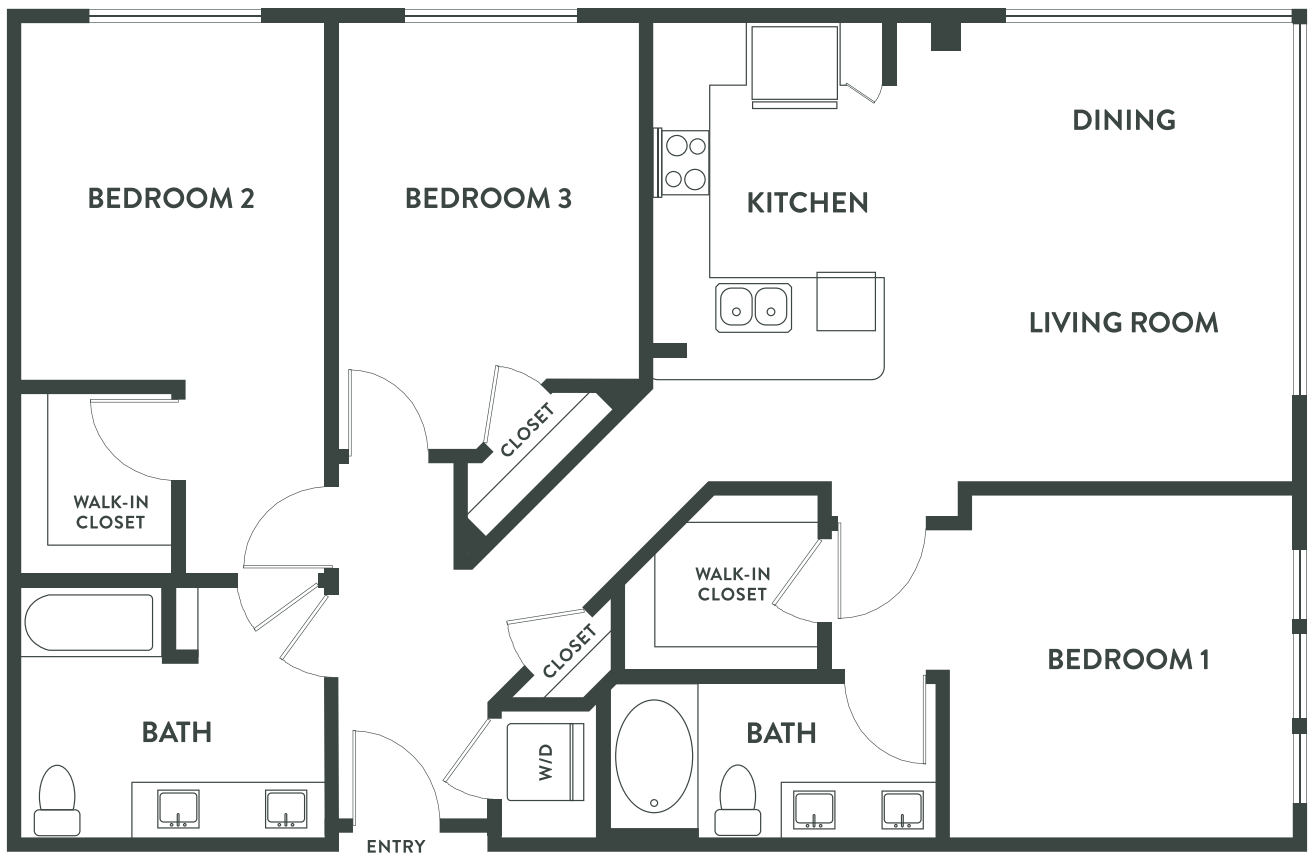


## C1 ANSI

### 3 Bedroom / 2 Bathroom

Approximately 1,330 sq. ft.

Square footage is approximate and may vary by unit.  
Availability and pricing subject to change.



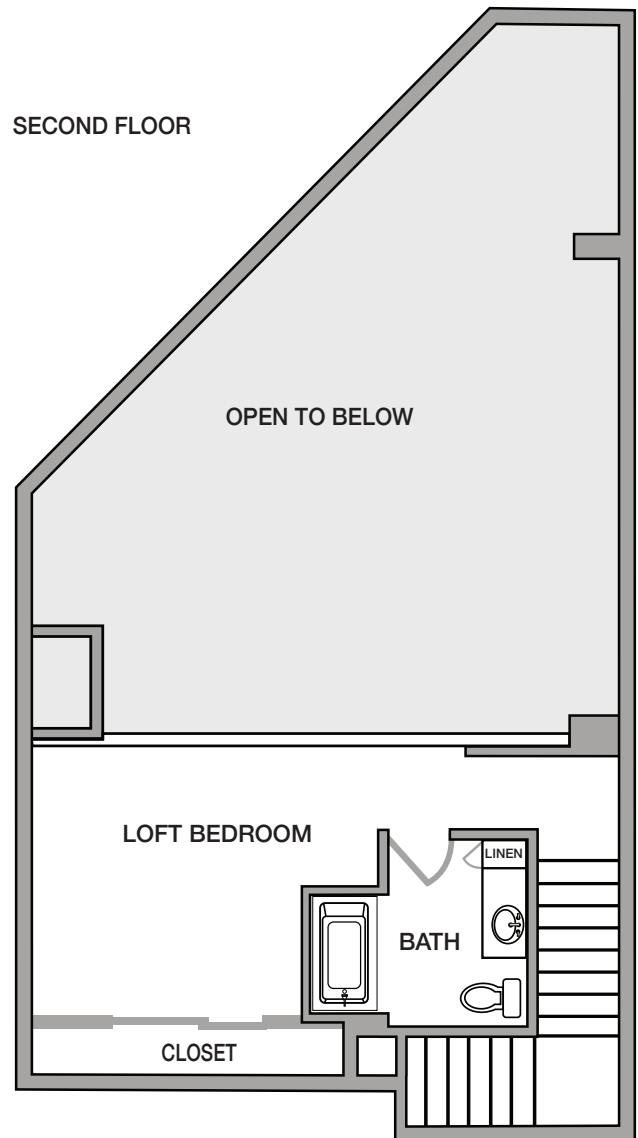
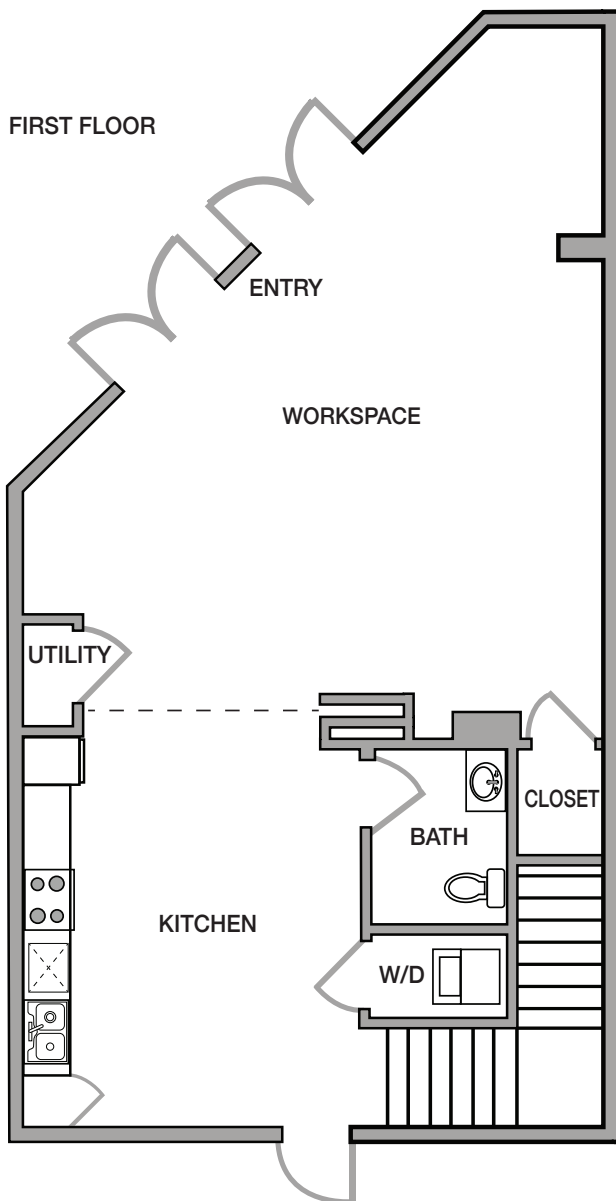


# Live/Work Unit 1

## 1 Bedroom / 1.5 Bathroom

Approximately 1,283 sq. ft.

Square footage is approximate and may vary by unit.  
Availability and pricing subject to change.

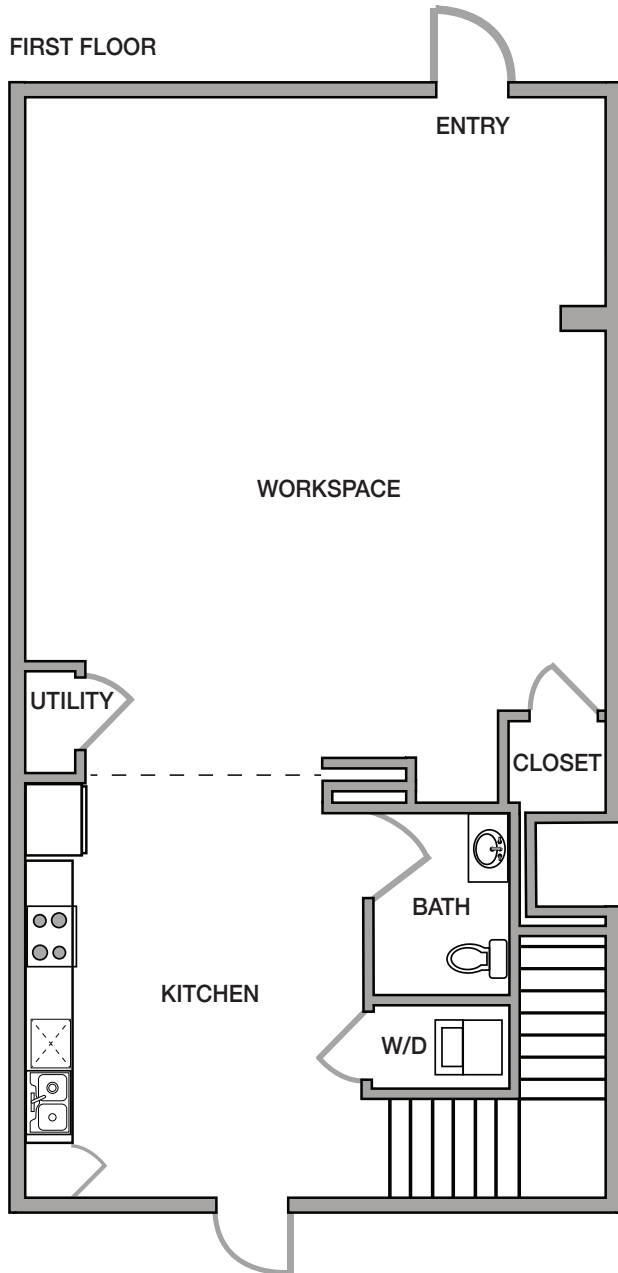


## Live/Work Unit 2

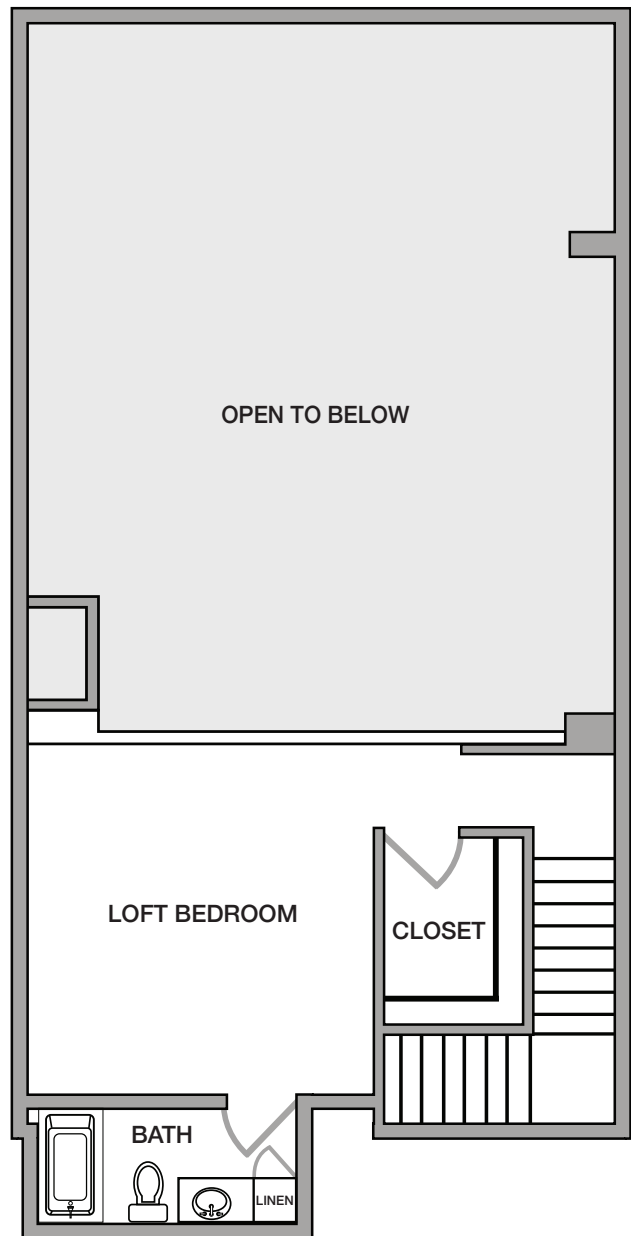
### 1 Bedroom / 1.5 Bathroom

Approximately 1,548 sq. ft.

Square footage is approximate and may vary by unit.  
Availability and pricing subject to change.



SECOND FLOOR

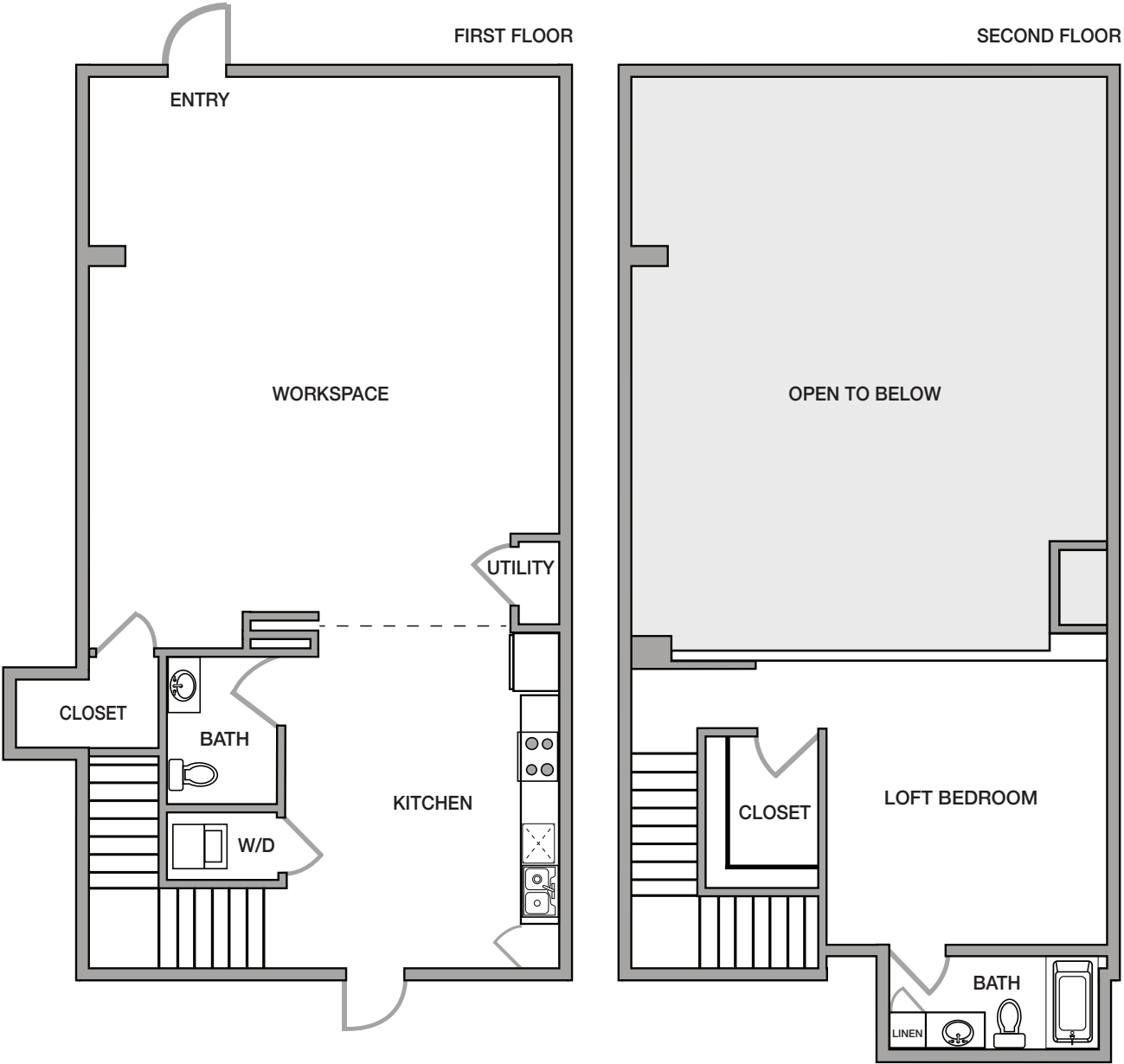




**Live/Work Unit 3**  
**1 Bedroom / 1.5 Bathroom**

Approximately 1,585 sq. ft.

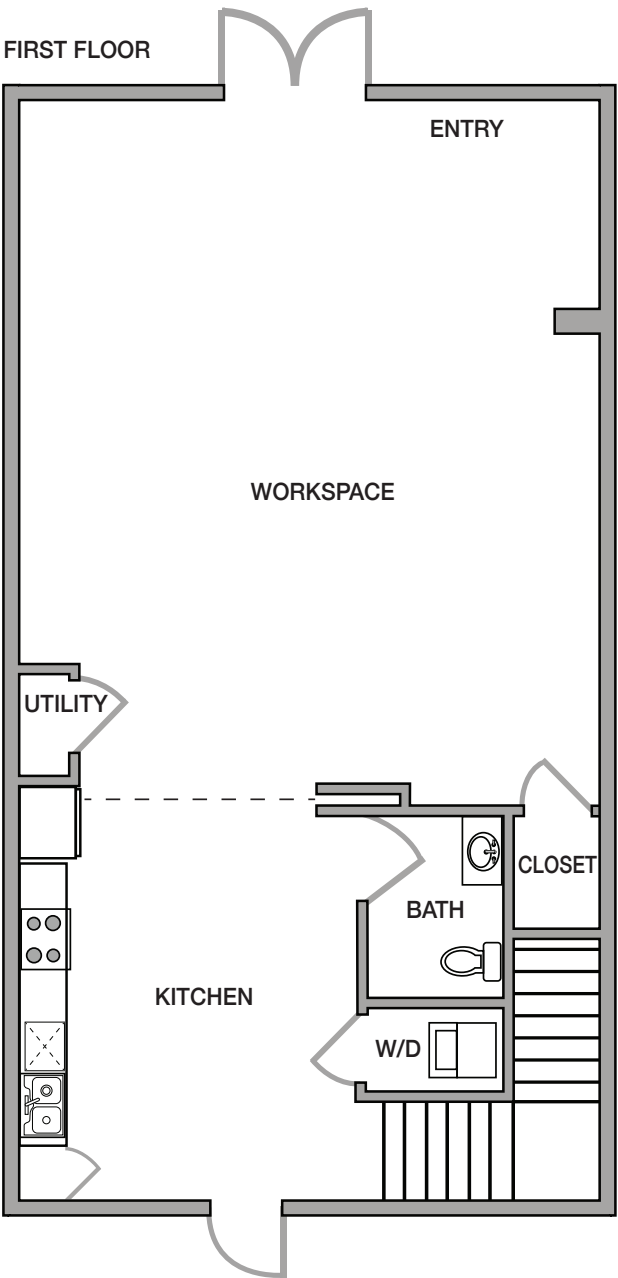
Square footage is approximate and may vary by unit.  
Availability and pricing subject to change.



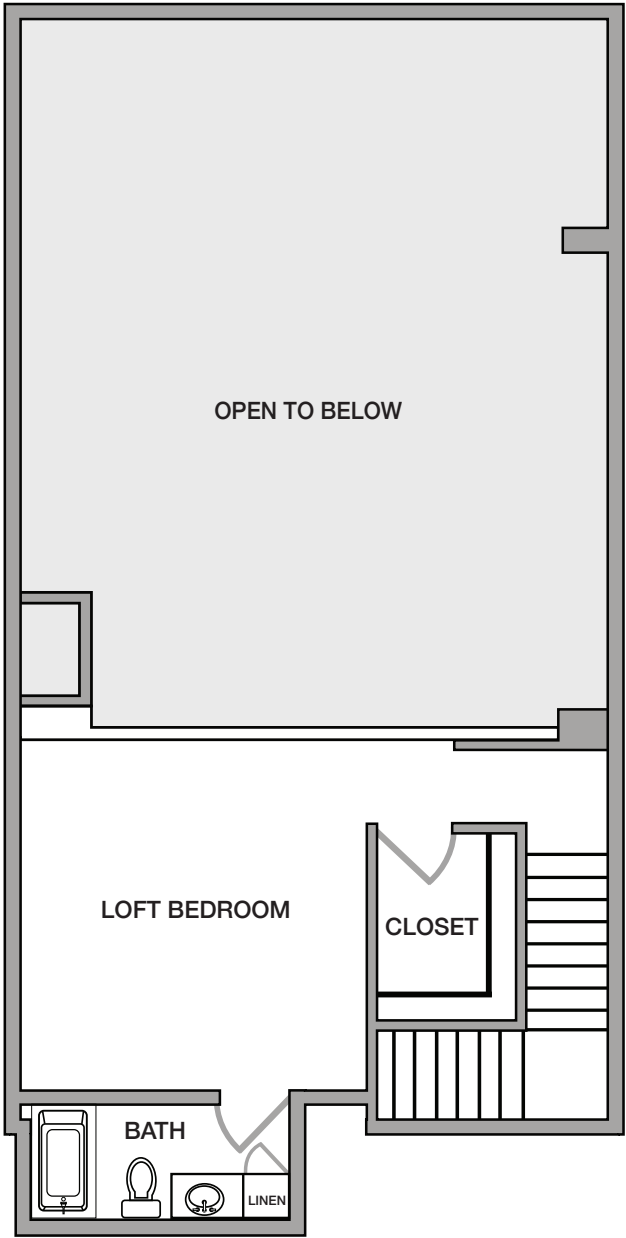
**Live/Work Unit 4**  
**1 Bedroom / 1.5 Bathroom**  
Approximately 1,567 sq. ft.

Square footage is approximate and may vary by unit.  
Availability and pricing subject to change.

FIRST FLOOR



SECOND FLOOR



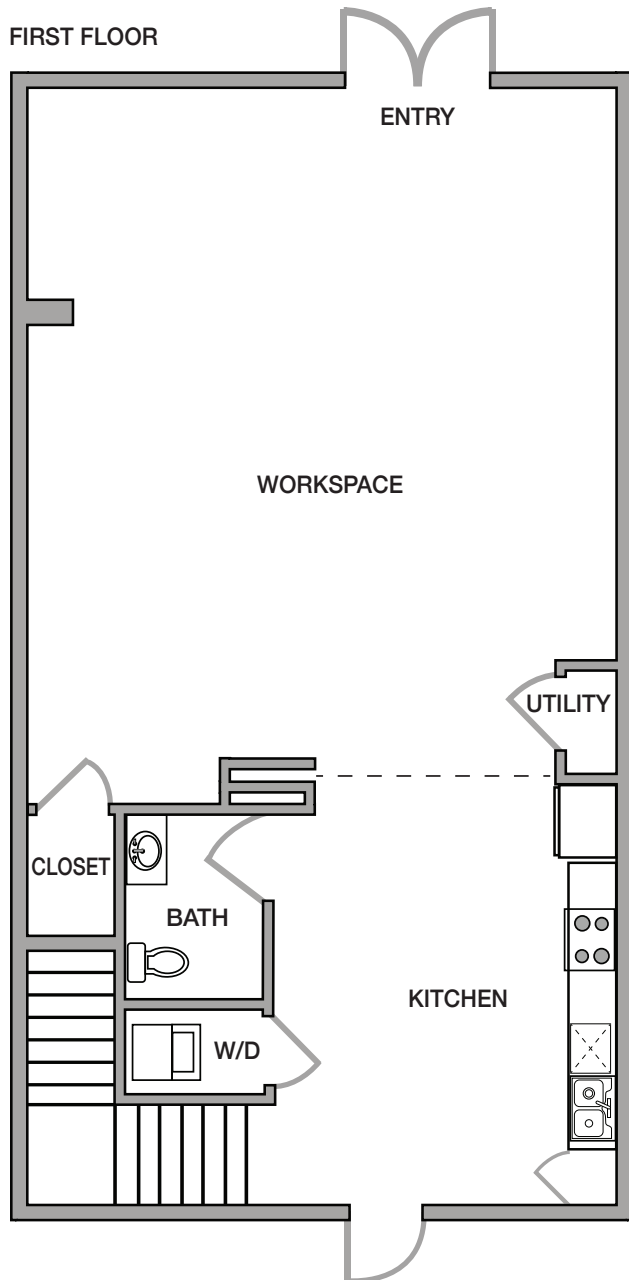


## Live/Work Unit 5

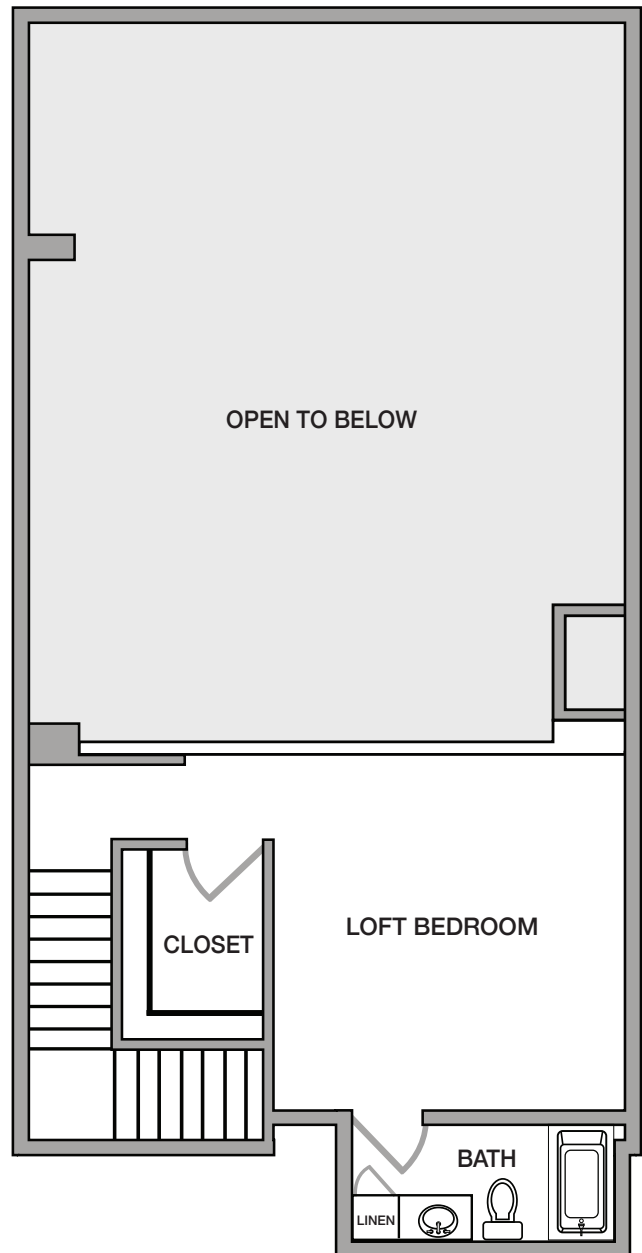
### 1 Bedroom / 1.5 Bathroom

Approximately 1,567 sq. ft.

Square footage is approximate and may vary by unit.  
Availability and pricing subject to change.



SECOND FLOOR

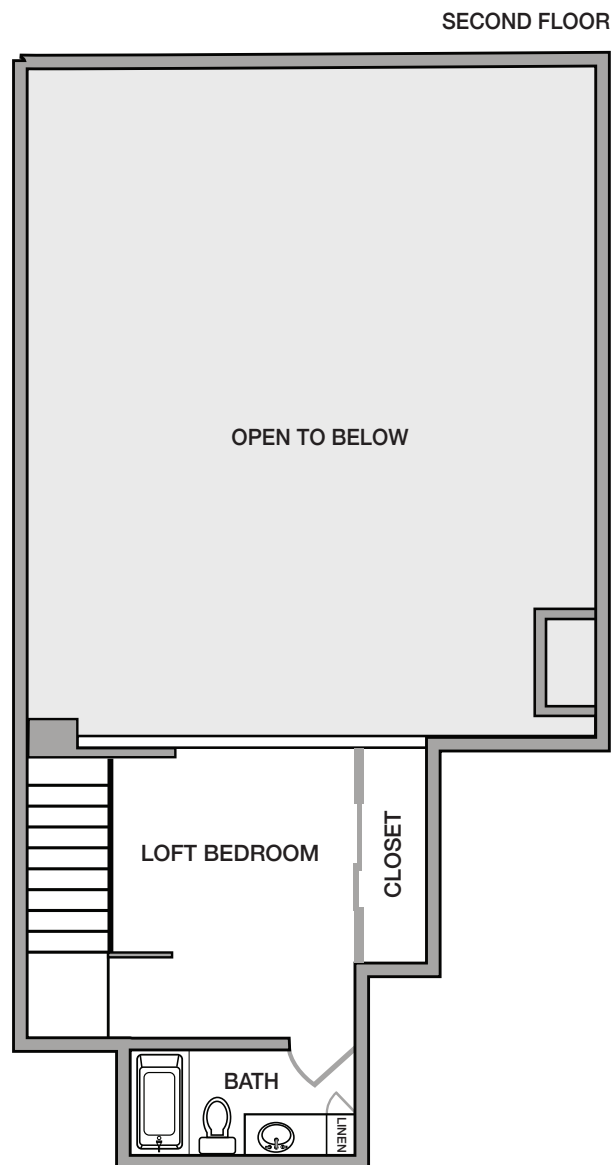
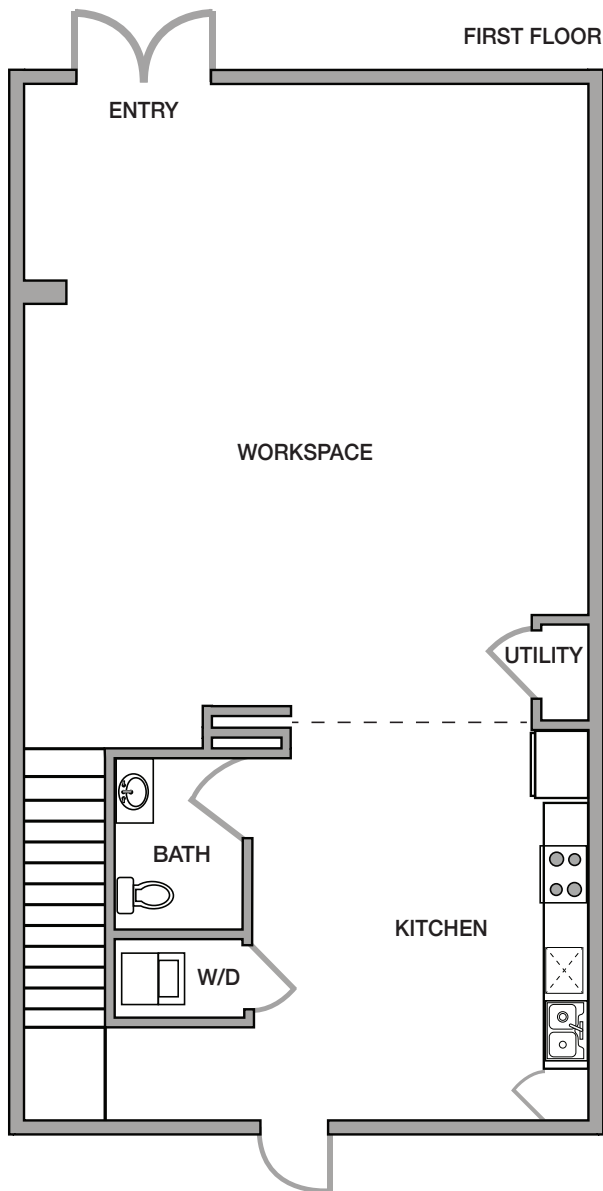


## Live/Work Unit 6

### 1 Bedroom / 1.5 Bathroom

Approximately 1,550 sq. ft.

Square footage is approximate and may vary by unit.  
Availability and pricing subject to change.



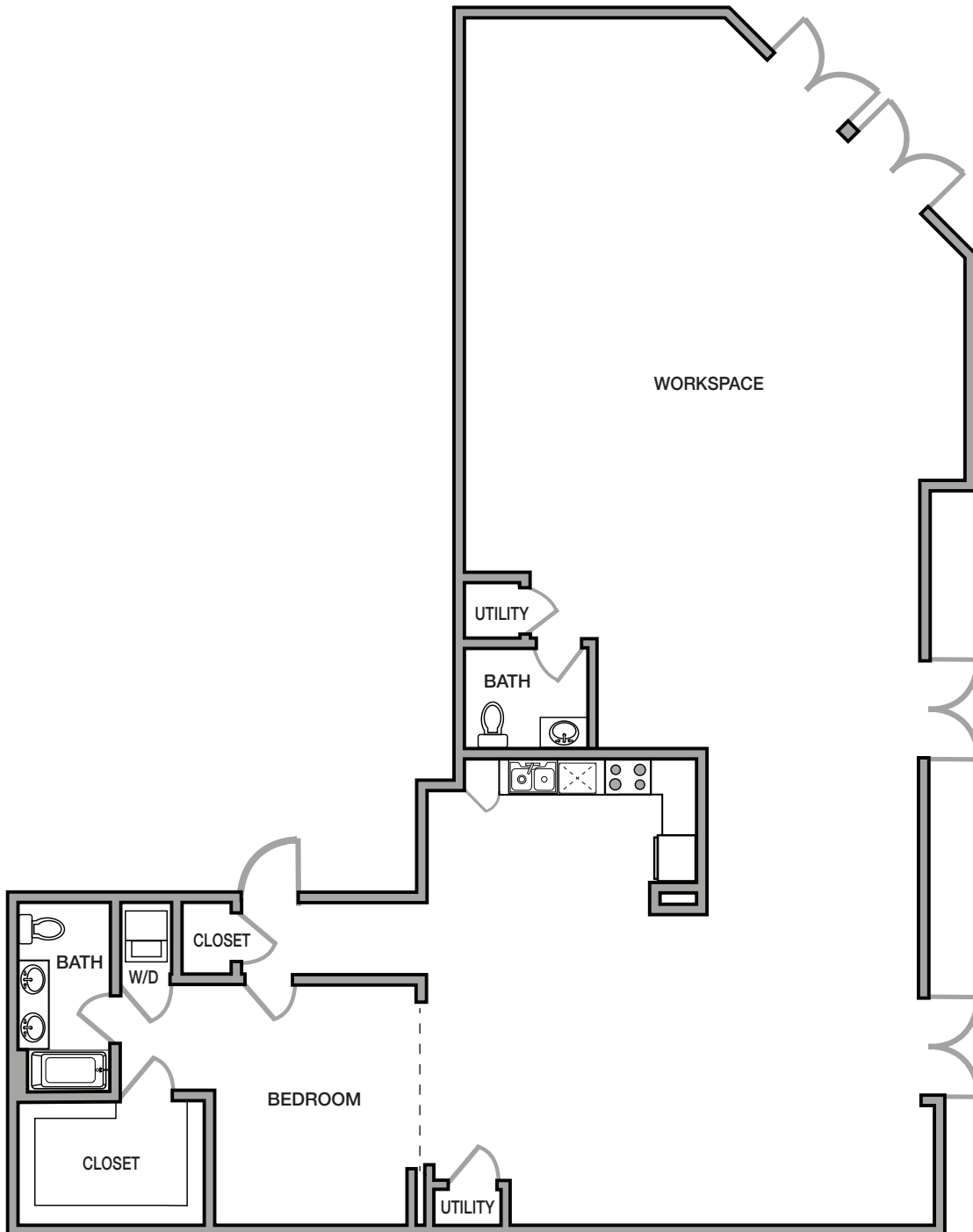
## Live/Work Unit 7

### 1 Bedroom / 1.5 Bathroom

Approximately 2,710 sq. ft.

Square footage is approximate and may vary by unit.  
Availability and pricing subject to change.

FIRST FLOOR

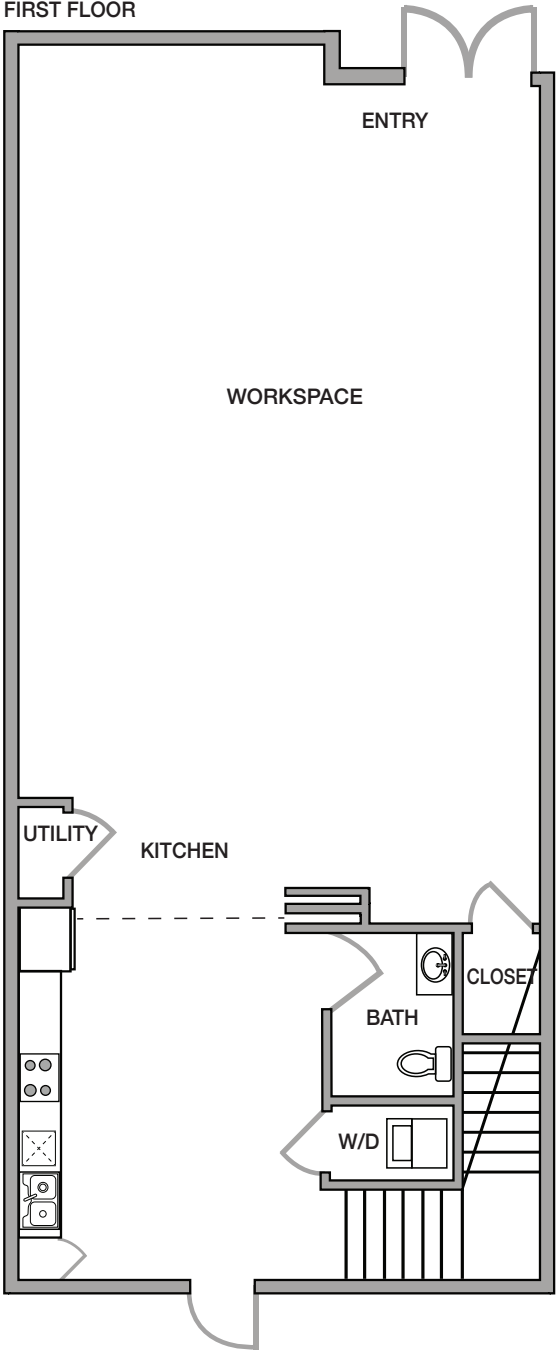




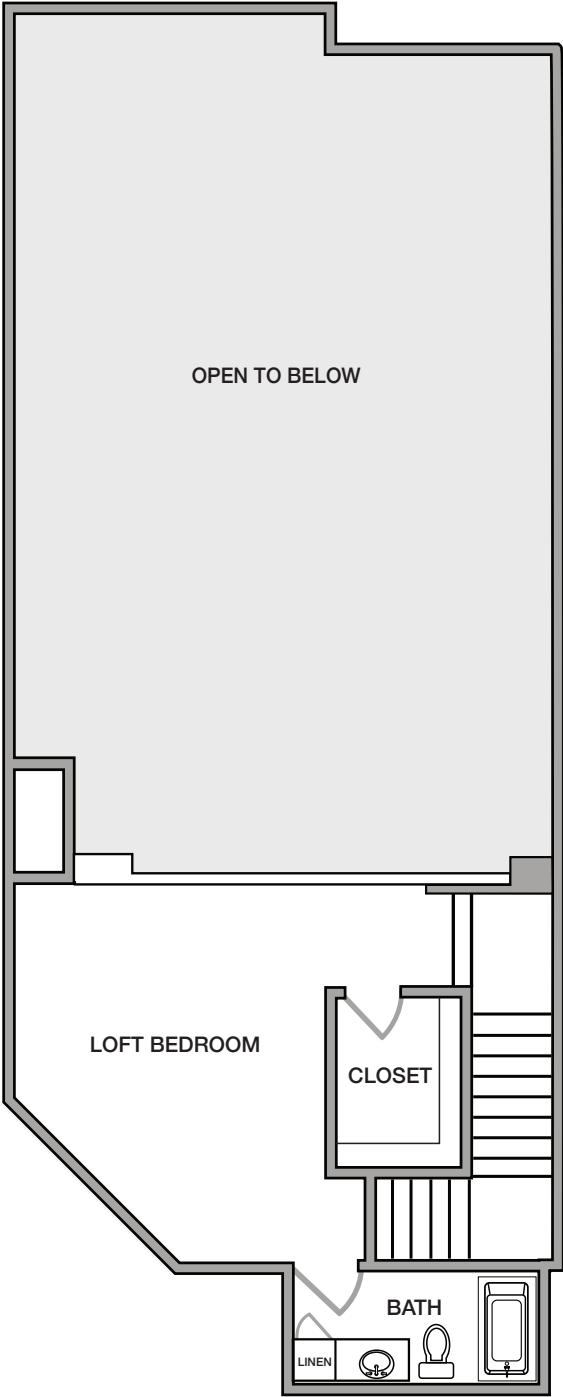
**Live/Work Unit 8**  
**1 Bedroom / 1.5 Bathroom**  
Approximately 1,789 sq. ft.

Square footage is approximate and may vary by unit.  
Availability and pricing subject to change.

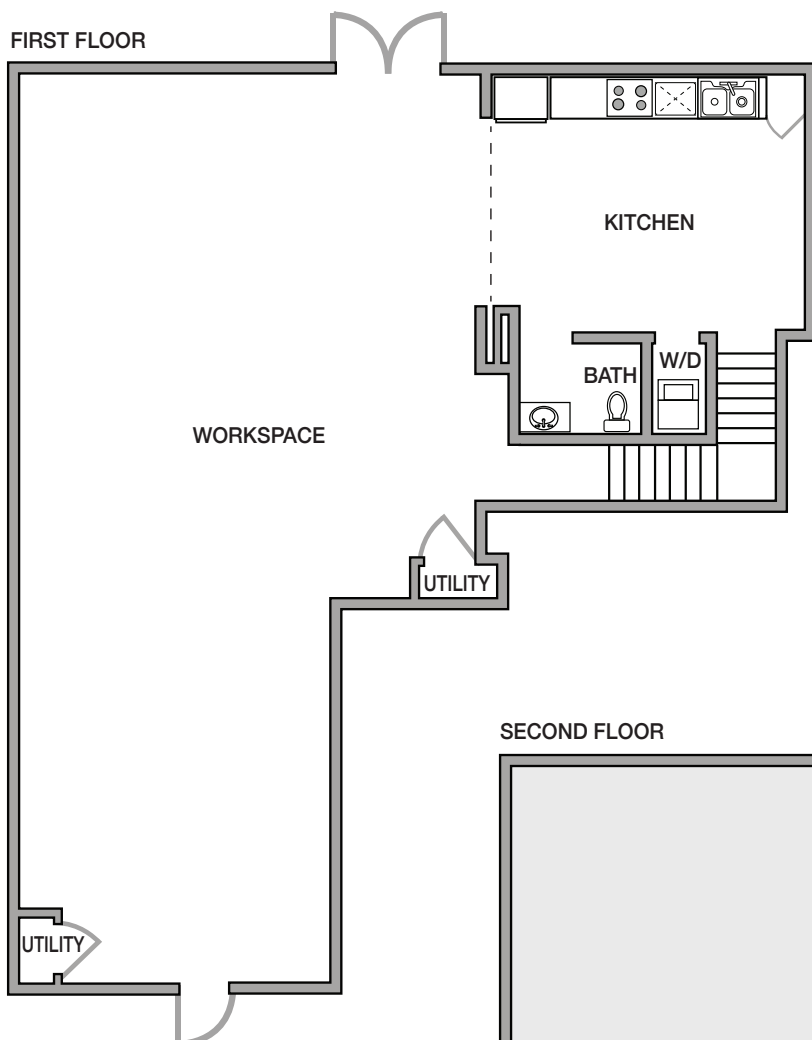
FIRST FLOOR



SECOND FLOOR



FIRST FLOOR



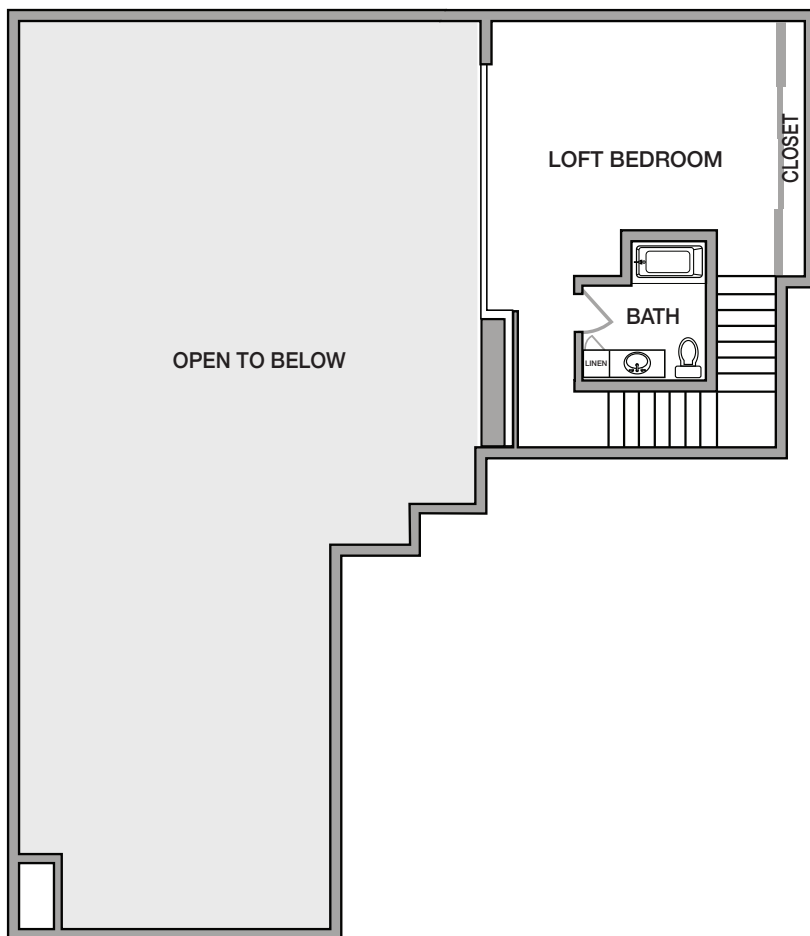
## Live/Work Unit 9

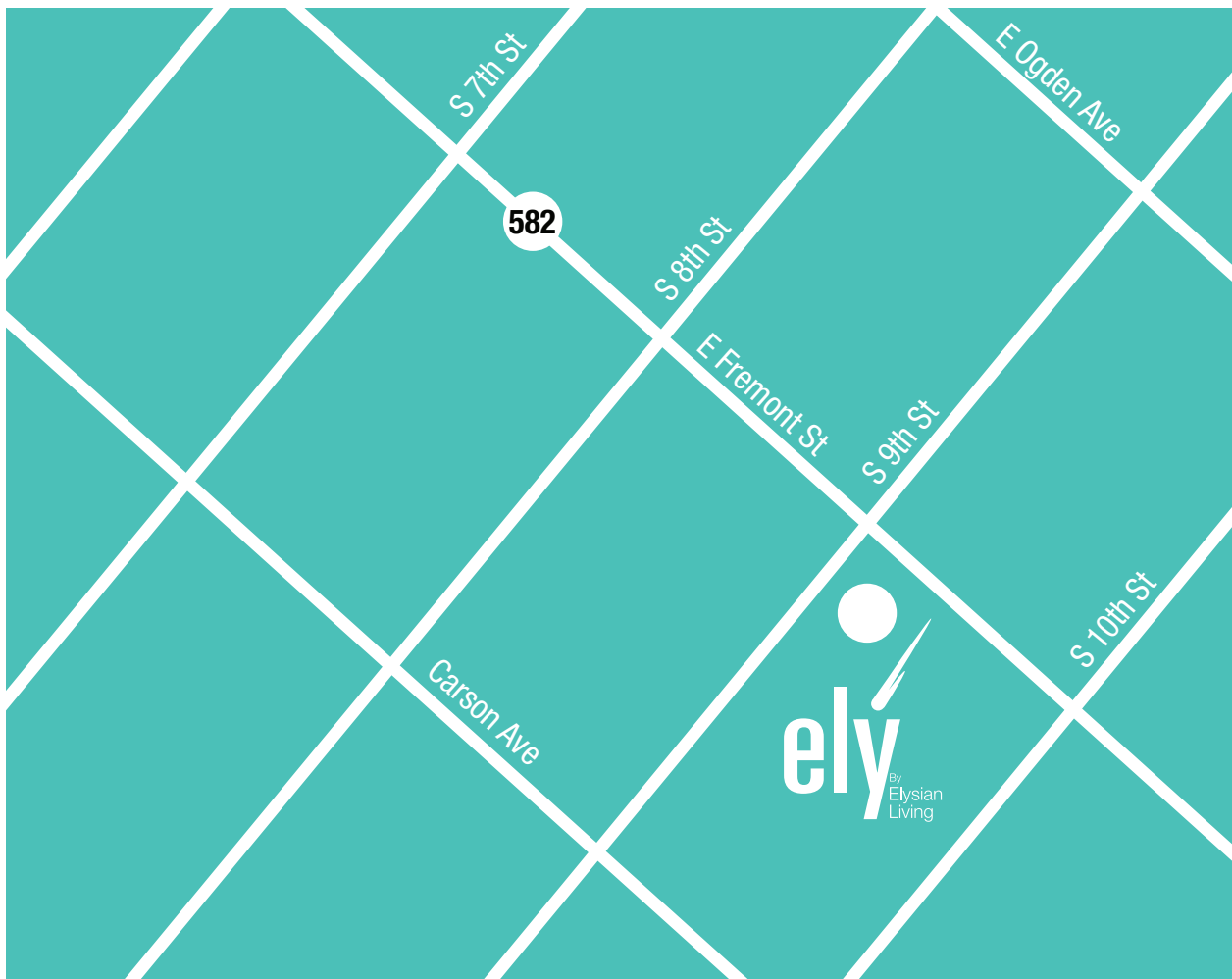
### 1 Bedroom / 1.5 Bathroom

Approximately 2,311 sq. ft.

Square footage is approximate and may vary by unit.  
Availability and pricing subject to change.

SECOND FLOOR





901 Fremont Street  
Las Vegas, NV 89101

[Elyonfremont.com](http://Elyonfremont.com)

