



INDUSTRIAL SPACE

FOR SALE / FOR LEASE

9713-9717

Rue Clément

Lasalle



VIDEO

PROPERTY DETAILS



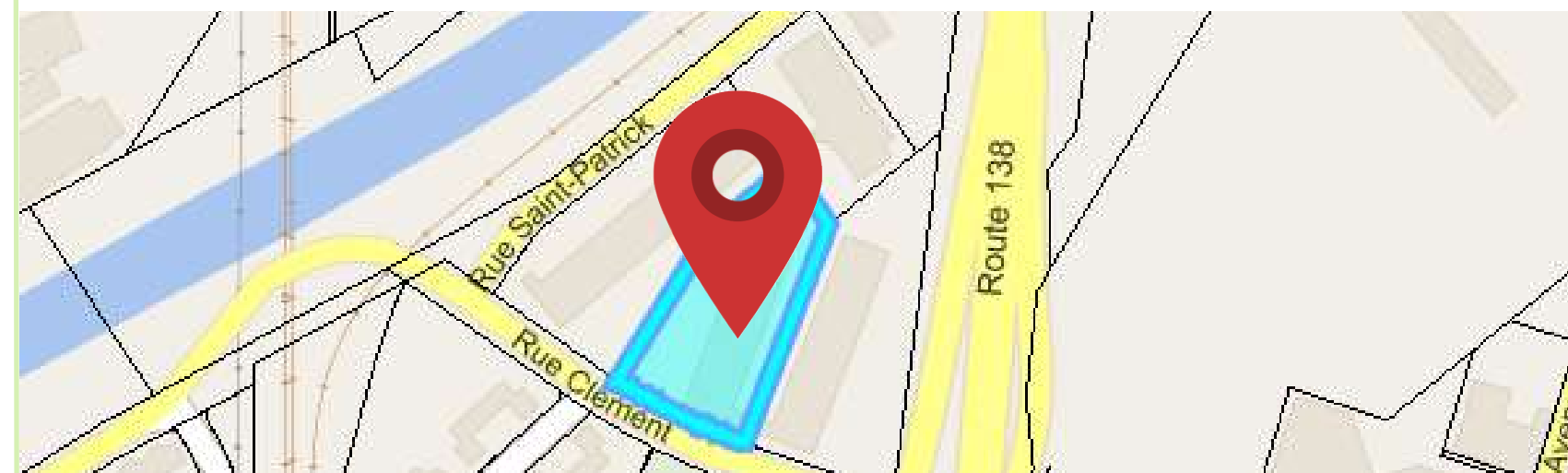
FEATURES

- Strategically positioned near Highways 20, 15, 13 and Route 138, providing convenient access to the Greater Montreal Area.
- Access to public transport via buses 101, 123, 195 & 198 which provide access to Metros Lionel Groulx and Angrignon
- The property benefits from a reputable property management team in place.
- Immediate access to a large, diverse labour pool

ZONING DETAILS

ZONE: 08-02

INDUSTRIAL: I1, I2, I3



TOTAL AVAILABLE AREA

± 7,710 SQ.FT.



OFFICE AREA

± 1,000 SQ.FT.



CLEAR HEIGHT

19'



TRUCK-LEVEL DOORS

3



COLUMN SPAN

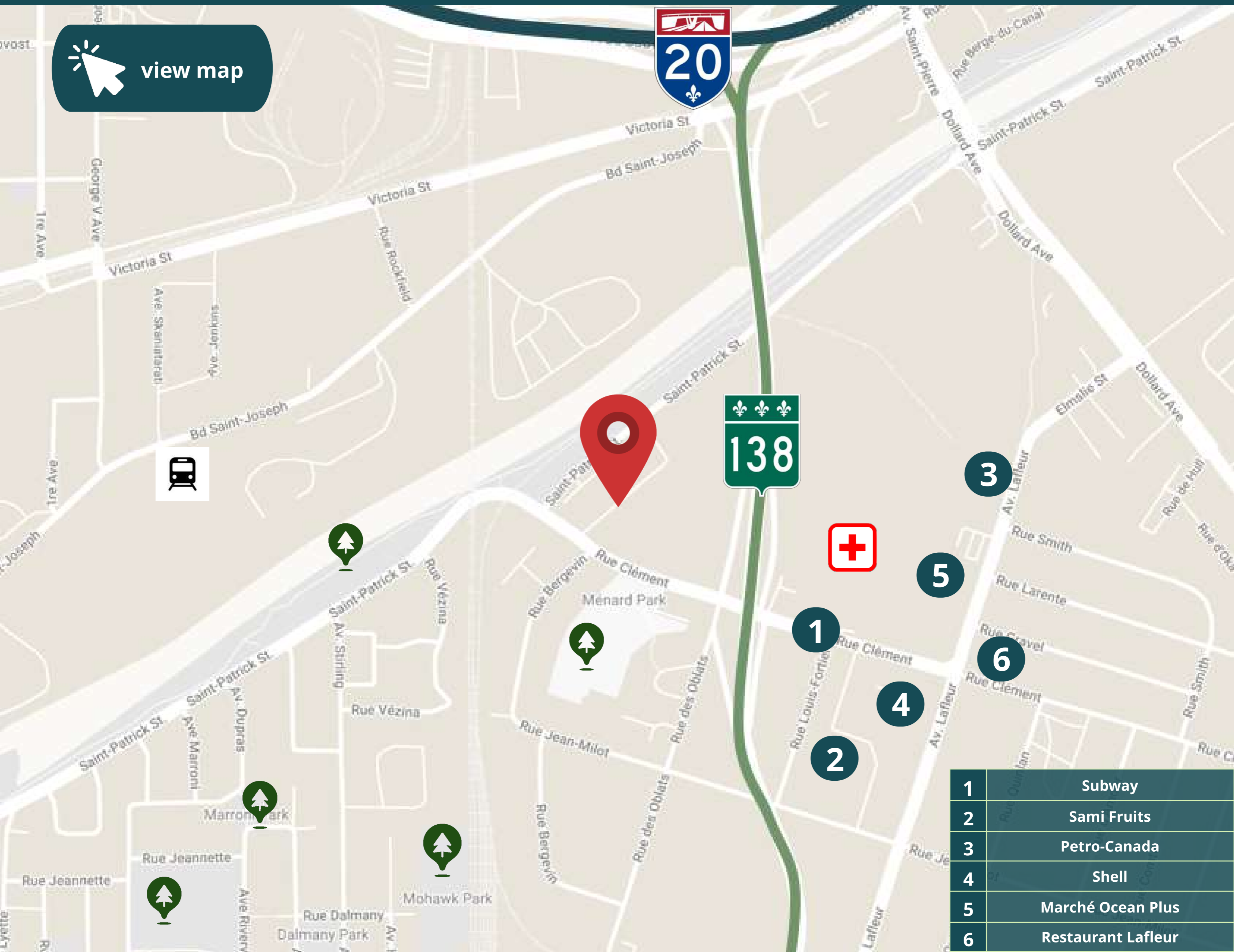
25' x 25'

INDUSTRIAL SPACE FOR SALE / FOR LEASE

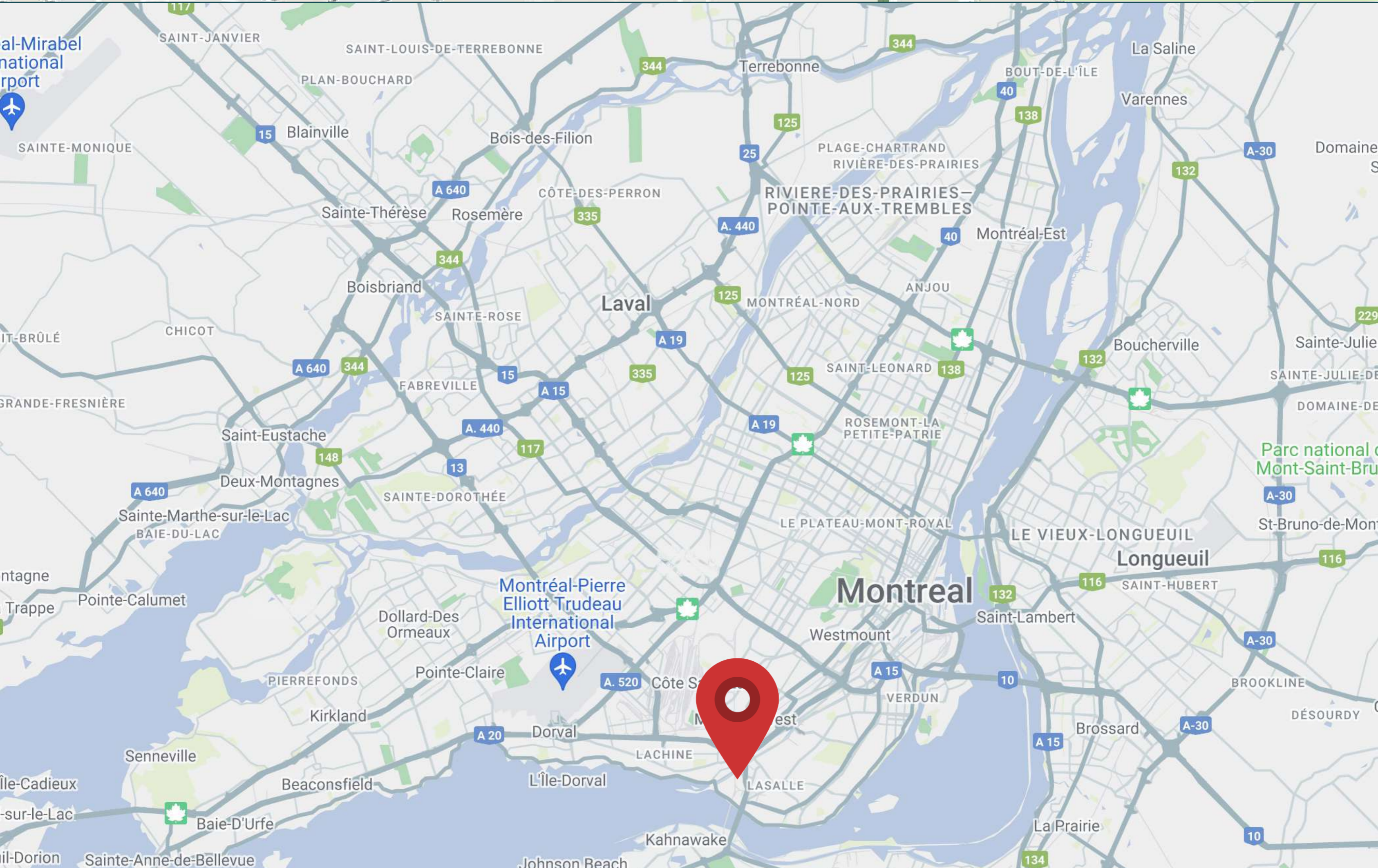
CONTACT US FOR MORE INFORMATION

LOCATION

Strategically positioned near **Highways 20, 15, 13 and Route 138**, providing convenient access to the **Greater Montreal Area**.



1	Subway
2	Sami Fruits
3	Petro-Canada
4	Shell
5	Marché Ocean Plus
6	Restaurant Lafleur



INDUSTRIAL SPACE FOR SALE / FOR LEASE
CONTACT US FOR MORE INFORMATION





INDUSTRIAL SPACE FOR SALE / FOR LEASE
CONTACT US FOR MORE INFORMATION





Real Estate Agency

4480 Chemin de la Côte-de-Liesse, suite 290,
Mont-Royal (Montréal), QC, H4N 2R1

514.736.0511



DISCLAIMER: Information provided is based on sources considered reliable, without a guarantee of accuracy. No responsibility and/or warranty is assumed by the broker. This document is intended solely for informational purposes, and is made subject to errors, modifications, and omissions. The purchaser/lessee is encouraged to perform proper due diligence prior to an acquisition or lease agreement. This is not an offer or promise to sell/lease that could bind the vendor/lessor to the purchaser/lessee, but rather an invitation to submit such offers or promises. Any sale is made without legal warranty.

Dimitri (Jimmy) Mouhteros *

Partner

Commercial Real Estate Broker

📞 514.296.6203

✉️ jmouhteros@trimontcanada.com

* Real estate broker acting within the business corporation Dimitri Mouhteros inc.

Peter Mouhteros

Partner

Certified Real Estate Broker, AEO

📞 514.229.3016

✉️ pmouhteros@trimontcanada.com

Robert Kohos

Associate

Commercial Real Estate Broker

📞 438.229.4741

✉️ rkohos@trimontcanada.com

Germando Mazzotta **

Partner

Commercial Real Estate Broker

📞 514.743.5013

✉️ gmazzotta@trimontcanada.com

** Real estate broker acting within the business corporation Germando Mazzotta inc.

Owen Paek

Senior Associate

Commercial Real Estate Broker

📞 514.816.2920

✉️ opaek@trimontcanada.com