

5901 MARKET STREET

PHILADELPHIA, PA 19139

TURNKEY
PLUG & PLAY MEDICAL
SPACE AVAILABLE



2,137 - 7,274 SF OF BRAND NEW MEDICAL SPACE

AVAILABLE FOR SUBLEASE THRU 2/28/2027

EXCLUSIVELY
REPRESENTED BY
THE FLYNN COMPANY

MICHAEL GALLAGHER
MGALLAGHER@FLYNNCO.COM
215-561-6565 X 151

BRENDAN FLYNN
BFLYNN@FLYNNCO.COM
215-561-6565 X 152

JOSEPH NASELLI
JNASELLI@FLYNNCO.COM
215-561-6565 X 155

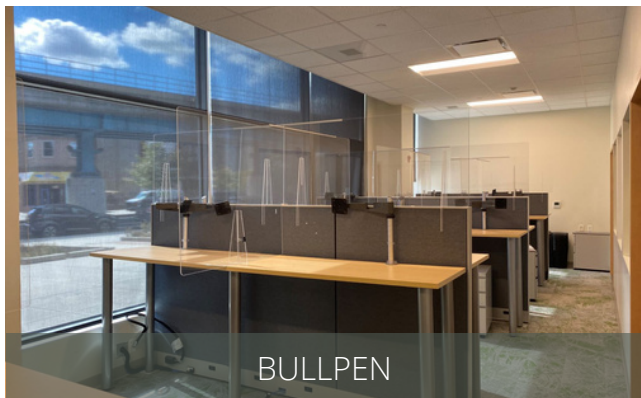
PROPERTY HIGHLIGHTS

- Asking Rents: \$20.00 per SF NNN
- 15 exam rooms, 2 medical labs, existing offices & consult rooms
- Newly built out for Trinity Health in 2019
- Exclusive Market Street entrance; great visibility & signage opportunity
- Adjacent to 60th St Station of Market-Frankford El
- Secure, underground parking garage & ample security
- Full plug and play opportunity with furniture and equipment available
- LEED Certified – Silver

The
Flynn
Company

THE FLYNN COMPANY

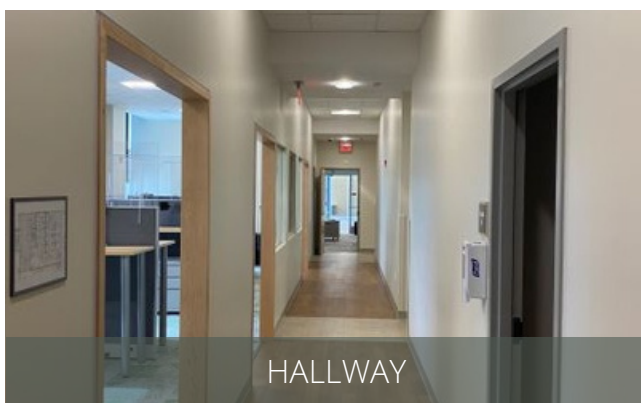
WWW.FLYNNCO.COM | 1621 WOOD STREET, PHILADELPHIA, PA 19103 | 215.561.6565



BULLPEN



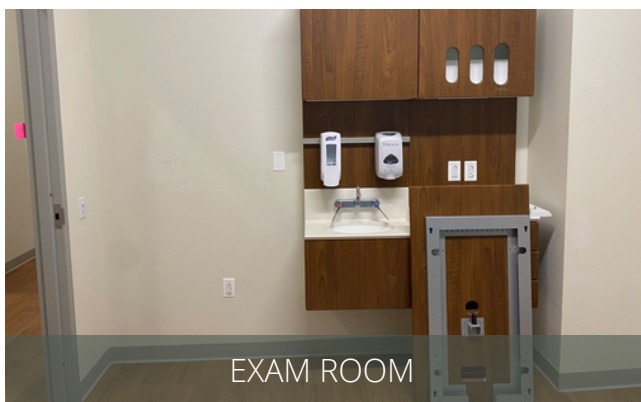
LAB ROOM



HALLWAY



LAB ROOM



EXAM ROOM



GLASS ENTRANCE

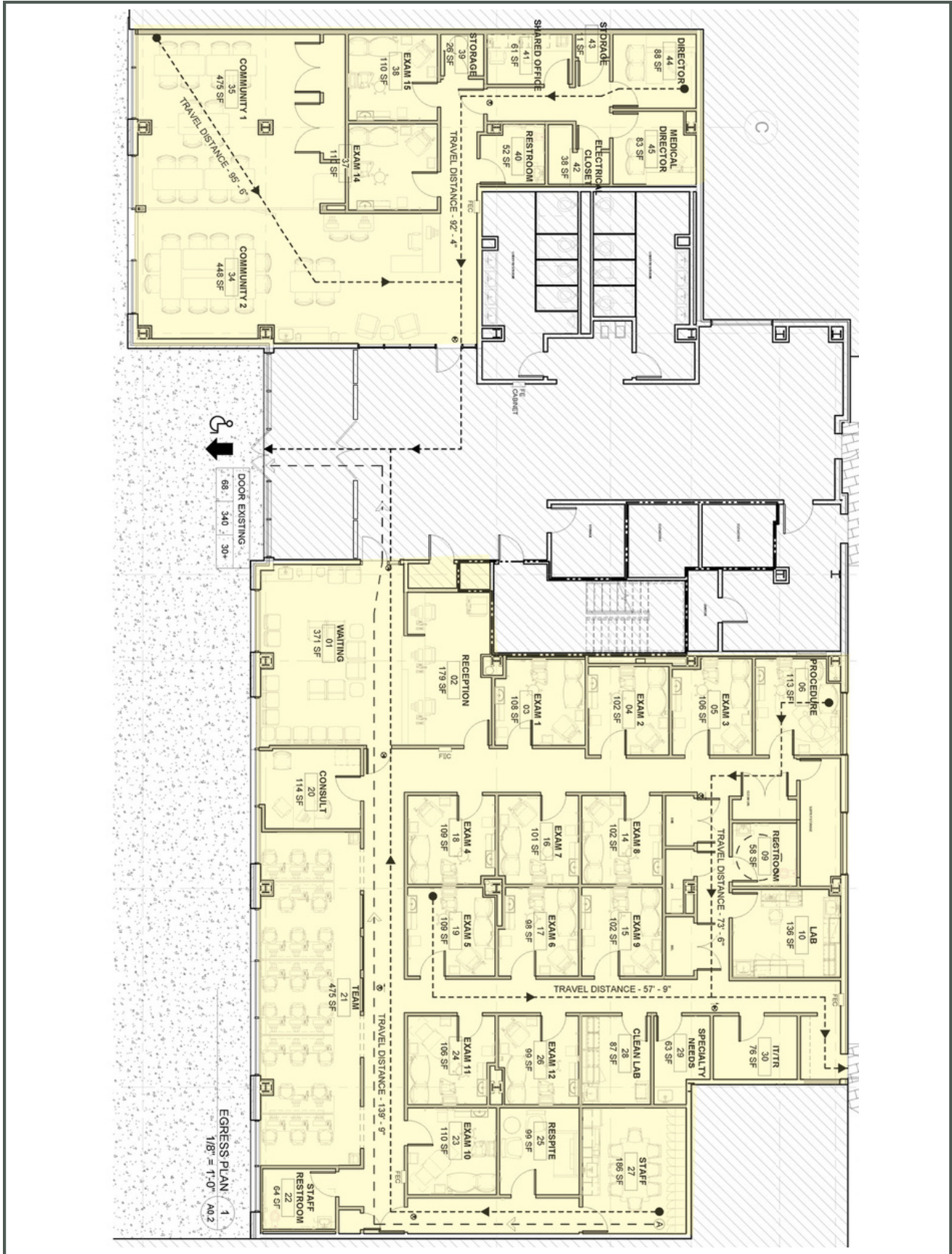


OPEN SPACE

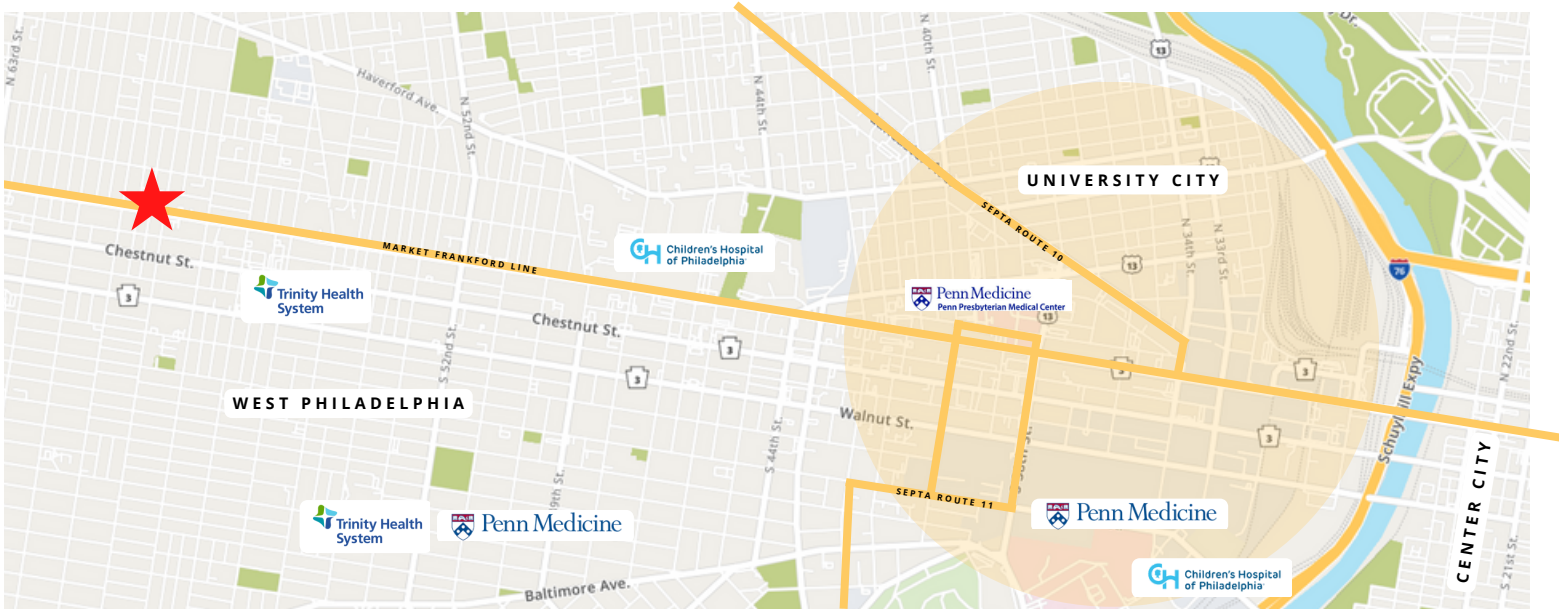


FRONTAGE OFF MARKET STREET

FLOOR PLAN | 7,274 SF AVAILABLE FOR SUBLEASE



HIGHLY ACCESSIBLE LOCATION IN WEST PHILADELPHIA



WALK SCORE
92

TRANSIT SCORE
72

BIKE SCORE
91



DIRECT MARKET STREET ACCESS

**For More Information
Please Contact:**

MICHAEL GALLAGHER
MGALLAGHER@FLYNNCO.COM
215-561-6565 X 151

BRENDAN FLYNN
BFLYNN@FLYNNCO.COM
215-561-6565 X 152

JOSEPH NASELLI
JNASELLI@FLYNNCO.COM
215-561-6565 X 155