



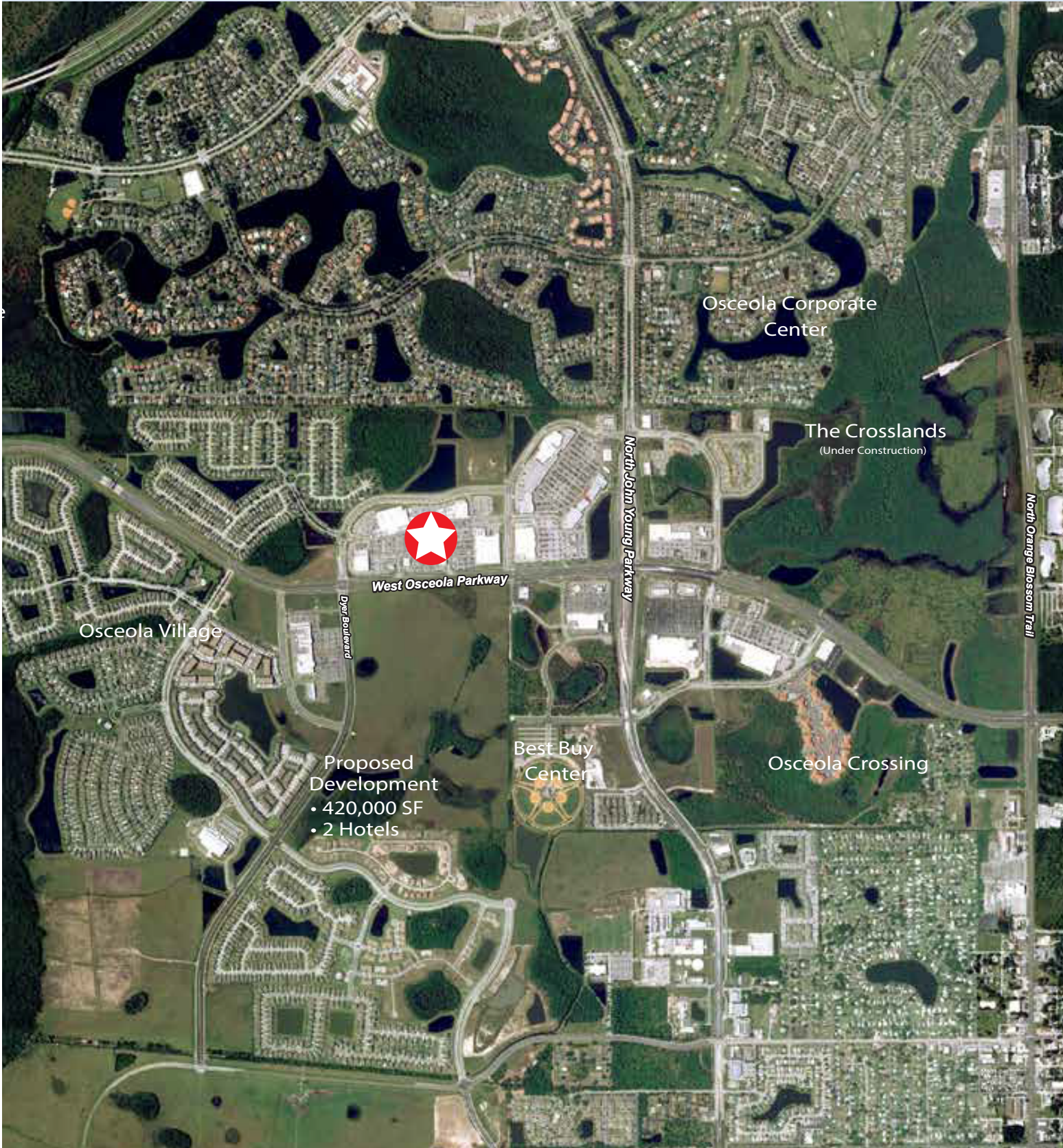
KISSIMMEE (ORLANDO) FLORIDA



LOOP WEST

KISSIMMEE (ORLANDO), FLORIDA

NEIGHBORHOOD



LOOP WEST

KISSIMMEE (ORLANDO), FLORIDA

NEIGHBORHOOD RETAIL



LOOP WEST

KISSIMMEE (ORLANDO), FLORIDA

SITE AERIALS



LOOP WEST

KISSIMMEE (ORLANDO), FLORIDA

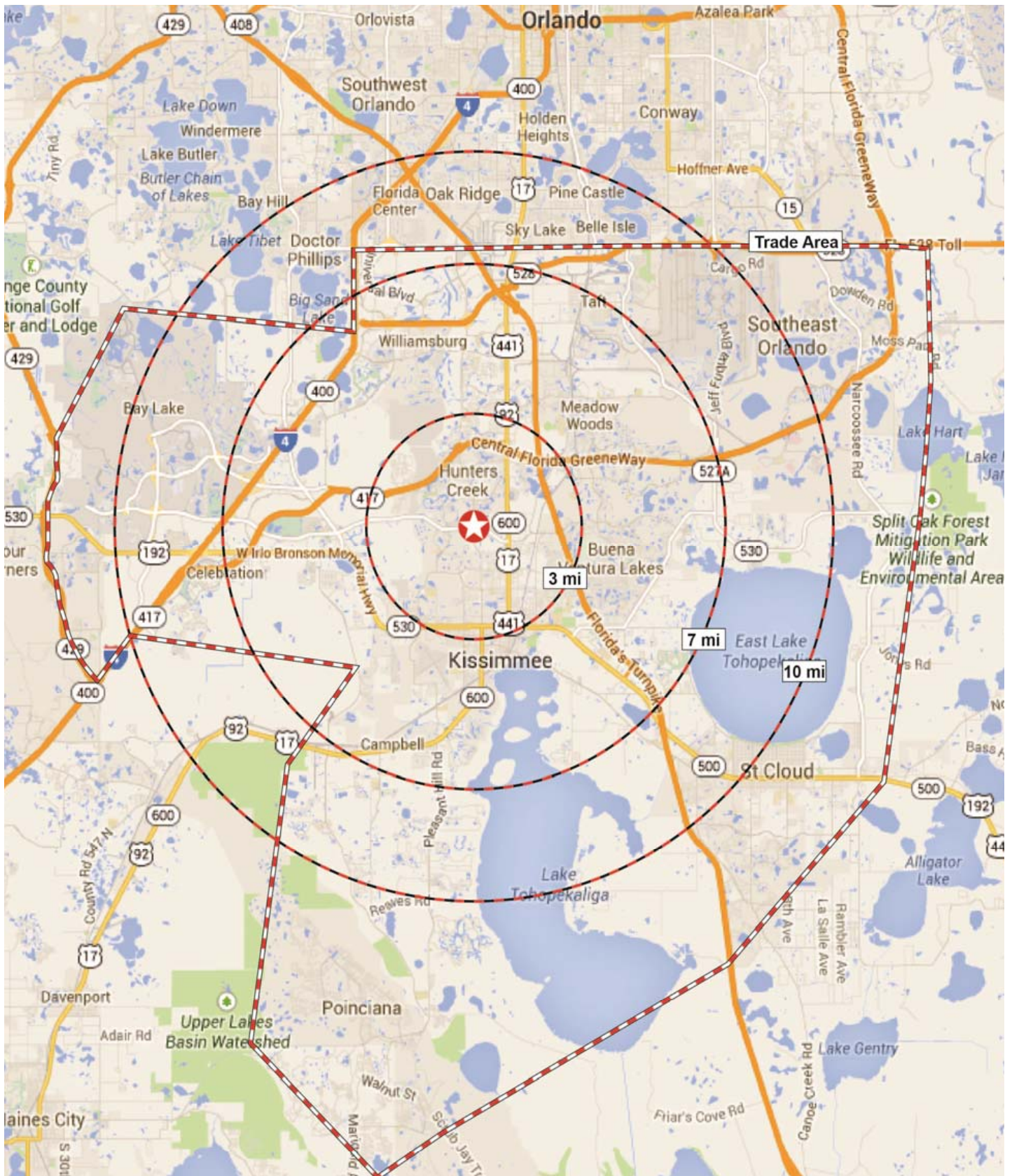
SITE PLAN



LOOP WEST

KISSIMMEE (ORLANDO), FLORIDA

MAP



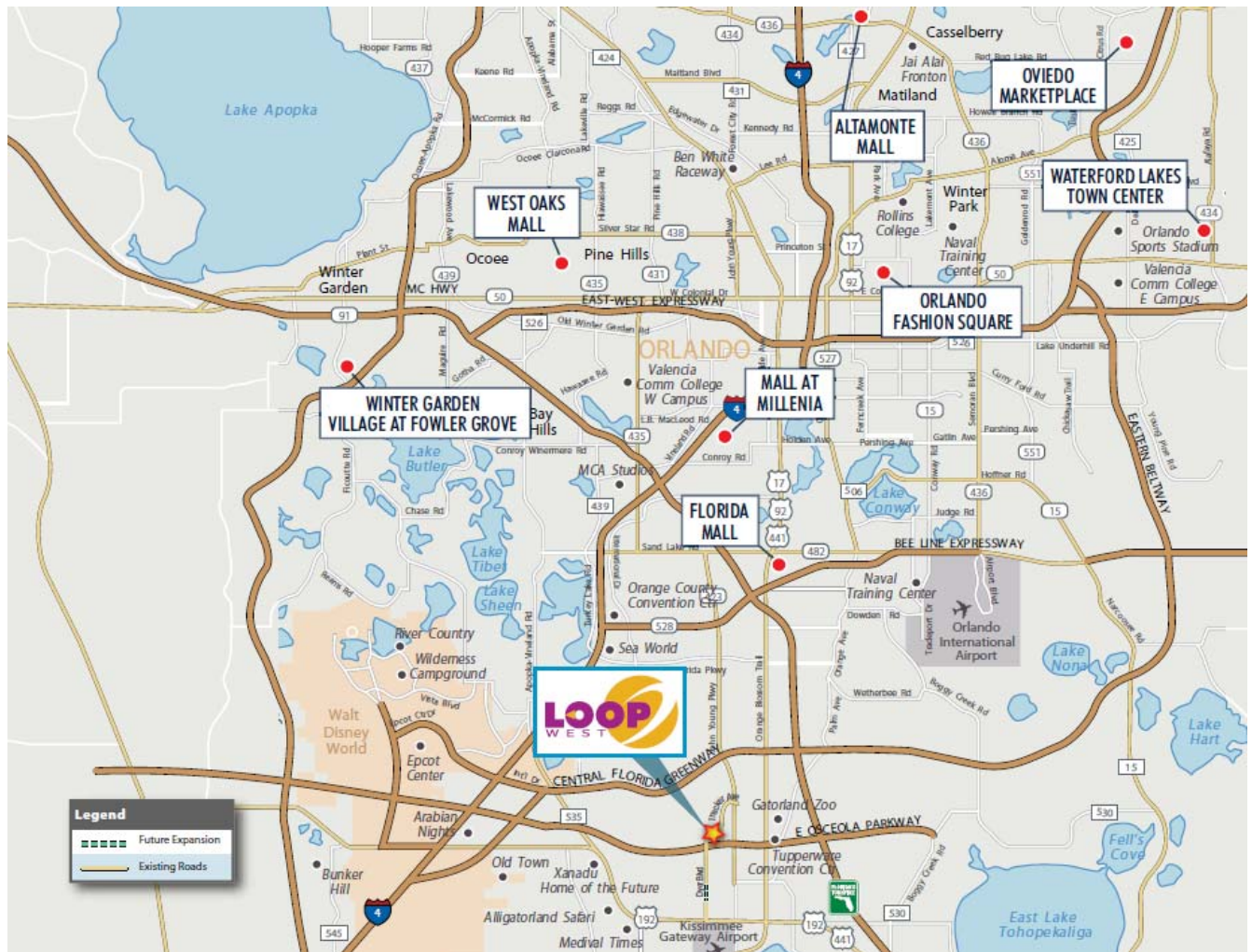
DEMOGRAPHICS

2001 WOSCEOLA PKWY						
KISSIMMEE, FL						
	1 mile	%	3 miles	%	5 miles	%
Population						
2019 Projection	8,628		86,034		211,576	
2014 Estimate	7,688		79,386		194,815	
2010 Census	6,828		73,505		179,920	
2000 Census	3,897		56,951		132,118	
Growth 2014-2019	12.22%		8.37%		8.60%	
Growth 2010-2014	12.60%		8.00%		8.28%	
Growth 2000-2010	75.20%		29.07%		36.18%	
Households						
2019 Projection	2,988		30,388		70,914	
2014 Estimate	2,690		28,110		65,370	
2010 Census	2,419		26,108		60,518	
2000 Census	1,383		20,447		46,360	
Growth 2014-2019	11.11%		8.10%		8.48%	
Growth 2010-2014	11.21%		7.67%		8.02%	
Growth 2000-2010	74.88%		27.68%		30.54%	
2014 Est. Tenure of Occupied Housing Units						
	2,690		28,110		65,370	
Owner Occupied	1,122	41.71	12,862	45.76	35,709	54.63
Renter Occupied	1,567	58.25	15,249	54.25	29,661	45.37
2014 Est. HHs by HH Income						
	2,690		28,110		65,370	
CY HHs, Inc < \$15,000	350	13.01	3,704	13.18	8,546	13.07
CY HHs, Inc \$15,000 - \$24,999	483	17.96	4,282	15.23	9,149	14.00
CY HHs, Inc \$25,000 - \$34,999	525	19.52	4,836	17.20	11,371	17.39
CY HHs, Inc \$35,000 - \$49,999	402	14.94	5,076	18.06	12,517	19.15
CY HHs, Inc \$50,000 - \$74,999	457	16.99	5,005	17.81	12,236	18.72
CY HHs, Inc \$75,000 - \$99,999	221	8.22	2,518	8.96	5,920	9.06
CY HHs, Inc \$100,000 - \$124,999	109	4.05	1,408	5.01	3,014	4.61
CY HHs, Inc \$125,000 - \$149,999	65	2.42	596	2.12	1,274	1.95
CY HHs, Inc \$150,000 - \$199,999	42	1.56	401	1.43	803	1.23
CY HHs, Inc \$200,000 - \$249,999	14	0.52	120	0.43	234	0.36
CY HHs, Inc \$250,000 - \$499,999	20	0.74	146	0.52	269	0.41
CY HHs, Inc \$500,000+	2	0.07	17	0.06	35	0.05
2014 Est. Average Household Income						
	\$49,091		\$49,623		\$49,036	

Source: 2013 The Nielsen Company.

EXPANDED TRADE AREA COMPETITION

MAJOR RETAIL CONCENTRATION								
Property Address	Anchors	Distance	Year Built/ Renovated	SF	Small Shop GLA	Available SF	% Leased	
Florida Mall	Macy's, Dillard's, JC Penney, Nordstrom, Sears, Saks	9.5 miles	1986/ 2001	1,954,968	618,855	4,796	99.8%	
The Mall at Millenia	Neiman Marcus, Bloomingdale's, Macy's	15.9 miles	2002	1,116,000	515,000	12,730	98.9%	
Orlando Fashion Square	Dillard's, JC Penney, Macy's, Sears	24.4 miles	1973/2002	1,084,900	381,700	54,287	96.0%	
West Oaks Mall	Dillard's, JC Penney, Sears, AMC Theatres	25.2 miles	1996/1998	1,505,560	1,148,750	261,024	82.7%	
Winter Garden Village at Fowler Grove	Super Target, Lowe's, Bed Bath & Beyond, PetSmart, Best Buy, Sports Authority, Staples, Marshall's	26.1 miles	2007	1,108,848	439,425	1,006	99.9%	
Waterford Lakes Town Center	Super Target, Bed, Bath & Beyond, ROSS Dress for Less, Best Buy, T.J. Maxx	28.8 miles	1999	1,012,703	387,680	4,920	99.5%	
Altamonte Mall	Dillard's, JC Penney, Macy's, Sears	30.2 miles	1974/1989/2004	1,321,958	428,348	13,534	99.0%	
Oviedo Marketplace	Macy's, Dillard's, Sears, Barnes & Noble Booksellers, Chamberlin's Market & Café, Regal Cinemas 22	35.1 miles	1998	950,000	503,550	0	100.0%	





400 Clematis Street · Suite 201 · West Palm Beach, Florida · 33401

T 561 578 8700 **F** 561 598 6612

www.nadg.com