

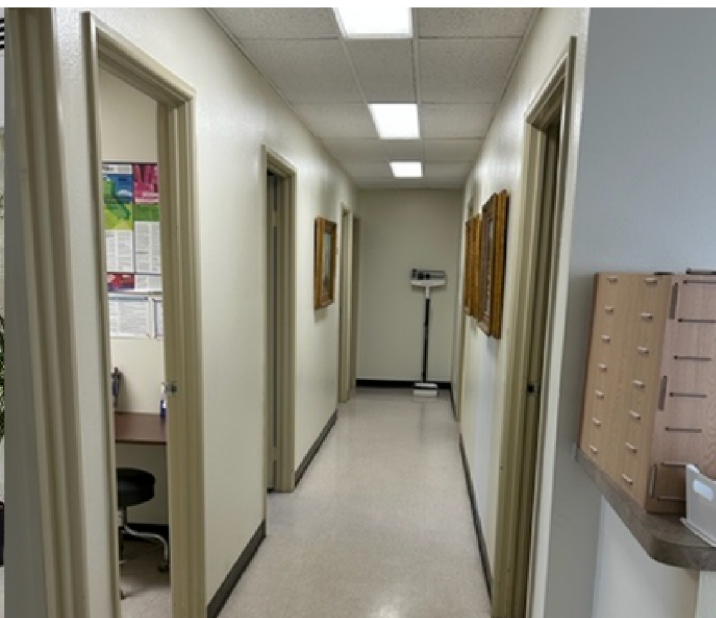
# MEDICAL OFFICE FOR SUBLEASE

## KINDRED HOSPITAL CAMPUS

**16415 S. Colorado Ave #402 Paramount , CA 90723**



- **1,244 SF Available in a Four Story Medical Building**
- **On Kindred Hospital Campus, Adjacent to City Hall**
- **Easy Access to I-710 and Rt 105 Fwy.**
- **Potential Synergy with Other Medical Tenants and the Hospital**
- **Onsite Property Management and Security Systems**
- **Ample Patient and Staff Parking**

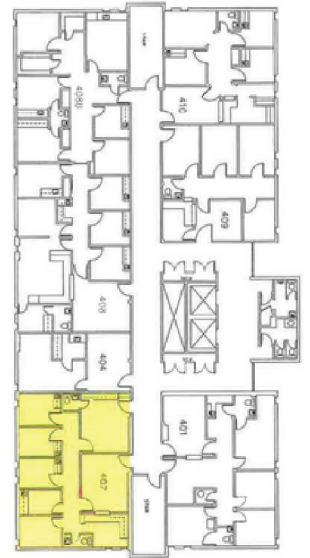


# PER DIEM OPPORTUNITY



**DAILY RATE**  
**\$150/ EXAM ROOM**

- ✓ **4 Exam Rooms**
- ✓ **Reception and Waiting Area**
- ✓ **Multiple Office and Storage Spaces**
- ✓ **Available M - W - F**



**Steve Body, Ph.D, MBA, MSF, MA**

[www.MDRECapital.com](http://www.MDRECapital.com)

**818-852-9255**

[Steve@mdrecapital.com](mailto:Steve@mdrecapital.com)

CA BRE #01927373  
Forward Studio City CA BRE #01428774

**Pelin Sen, MBA**

[www.passmedmanagement.com](http://www.passmedmanagement.com)

**310-382-7539**

[Pelin@passmedmgmt.com](mailto:Pelin@passmedmgmt.com)

CA BRE # 02210768