

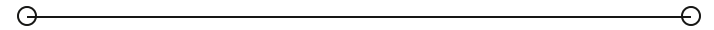


LEASE

Home Place Office

10610 NORTH PARK AVENUE

Carmel, IN 46280



PRESENTED BY:

**JESS LAWHEAD, SIOR, CCIM,
CBI**

O: 317.447.4403

jess.lawhead@svn.com

IN #RB14047741

COREY FRASIER

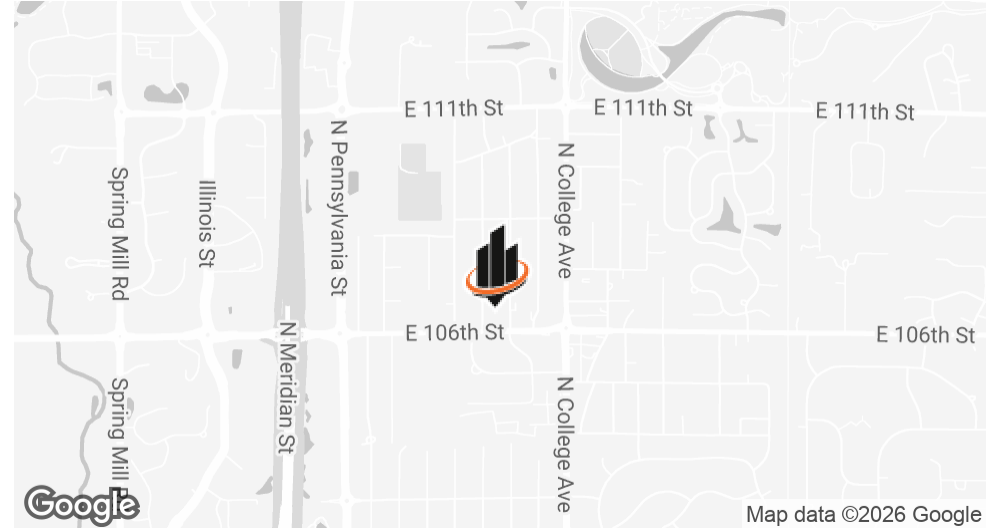
O: 574.261.3651

corey.frasier@svn.com

IN #RB18001405



PROPERTY SUMMARY



OFFERING SUMMARY

LEASE RATE:	\$3,000 SF/yr (MG)
NUMBER OF UNITS:	1
AVAILABLE SF:	1,534 SF
LOT SIZE:	0.71 Acres
BUILDING SIZE:	1,935 SF

JESS LAWHEAD, SIOR, CCIM, CBI

O: 317.447.4403

jess.lawhead@svn.com

IN #RB14047741

COREY FRASIER

O: 574.261.3651

corey.frasier@svn.com

IN #RB18001405

PROPERTY DESCRIPTION

SVN | Northern Commercial is pleased to offer this office property for lease at 10610 North Park Avenue. The building features a functional layout with on-site parking and is located just off College Avenue with strong visibility from 106th Street, making it well suited for office or professional users seeking a highly visible Northside location.

PROPERTY HIGHLIGHTS

- 1 private office
- 1 restroom
- Handicap accessible
- 6 parking spots
- Signage availability

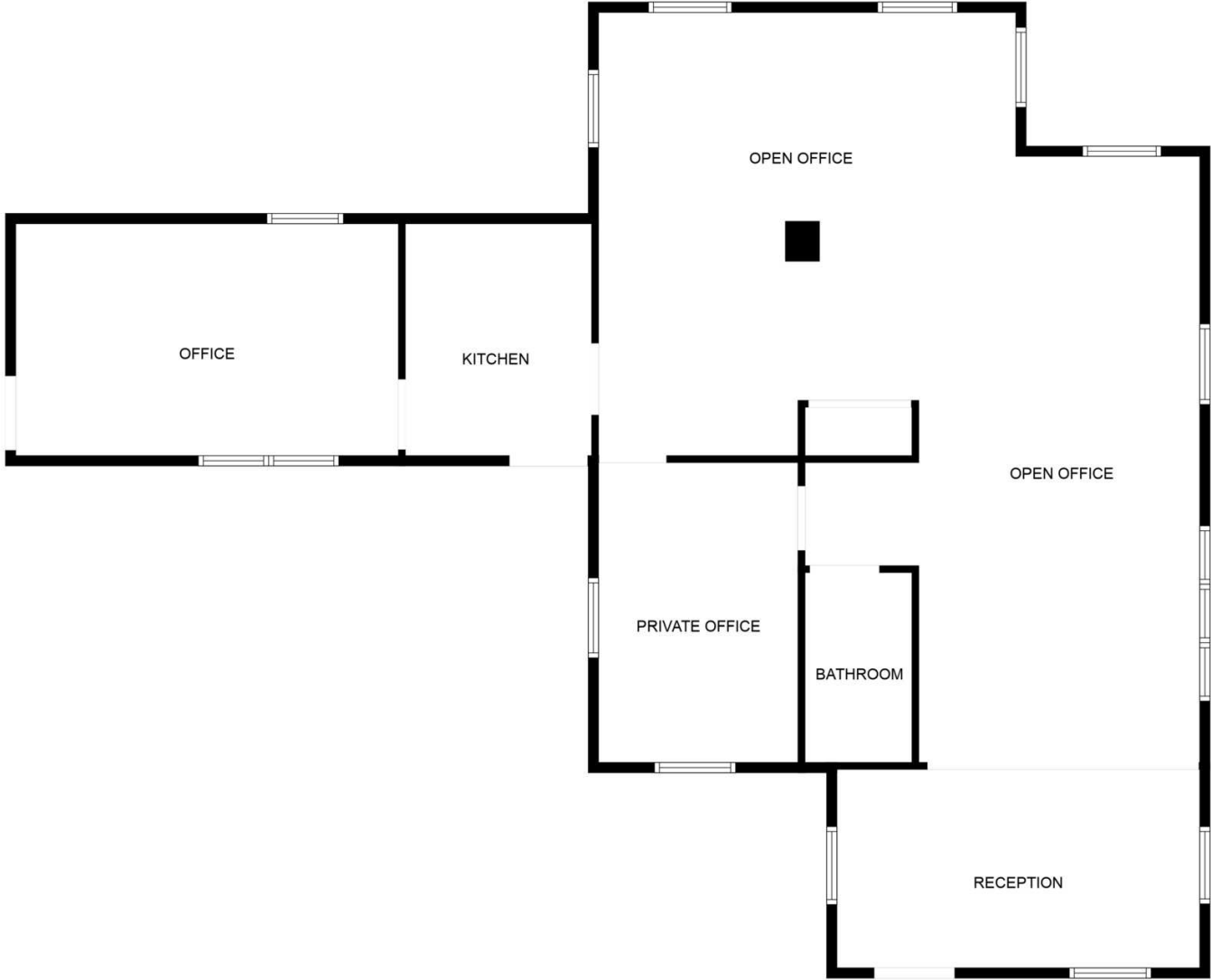
ADDITIONAL PHOTOS



JESS LAWHEAD, SIOR, CCIM, CBI
O: 317.447.4403
jess.lawhead@svn.com
IN #RB14047741

COREY FRASIER
O: 574.261.3651
corey.frasier@svn.com
IN #RB18001405

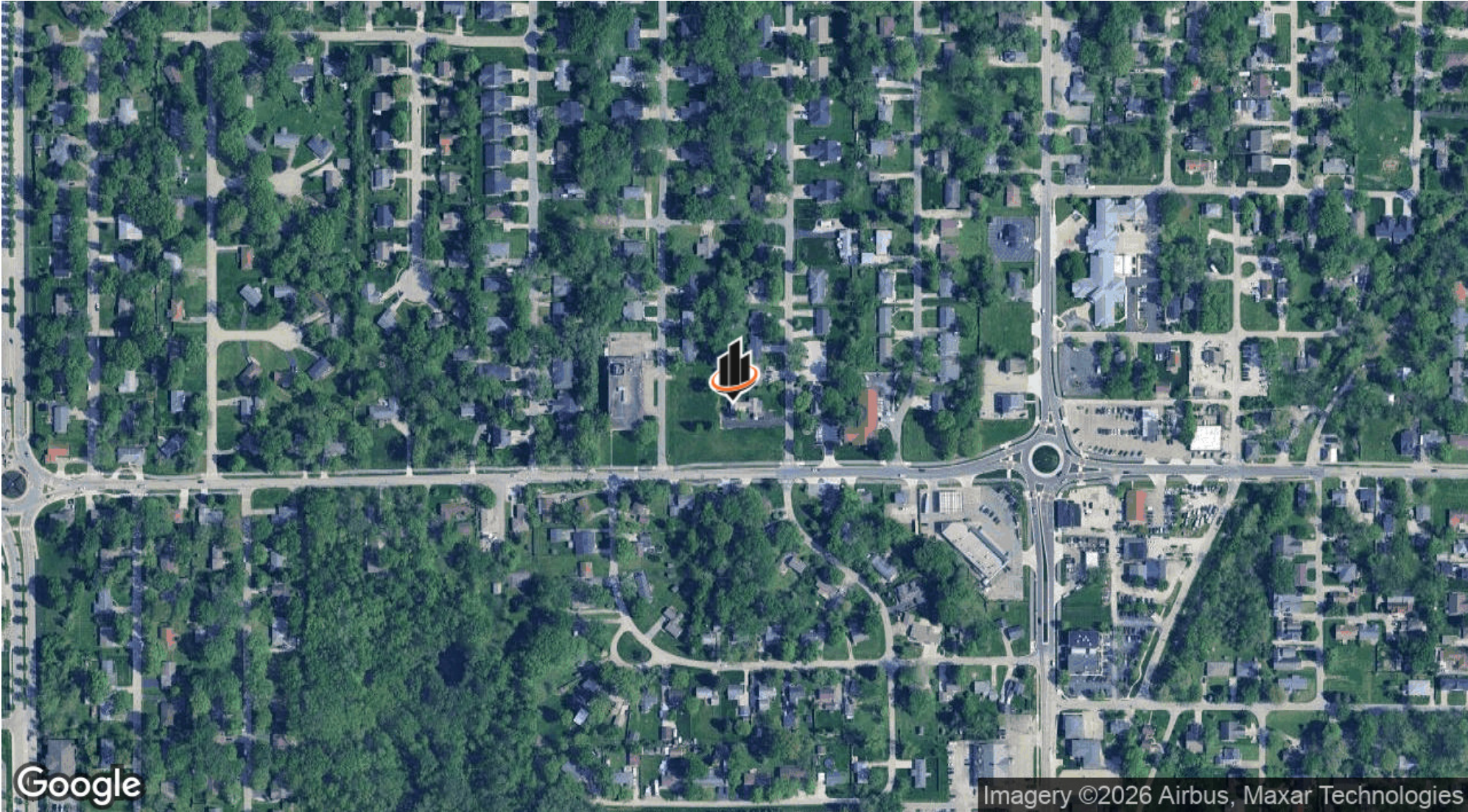
FLOOR PLAN



JESS LAWHEAD, SIOR, CCIM, CBI
O: 317.447.4403
jess.lawhead@svn.com
IN #RB14047741

COREY FRASIER
O: 574.261.3651
corey.frasier@svn.com
IN #RB18001405

LOCATION MAP



JESS LAWHEAD, SIOR, CCIM, CBI
O: 317.447.4403
jess.lawhead@svn.com
IN #RB14047741

COREY FRASIER
O: 574.261.3651
corey.frasier@svn.com
IN #RB18001405