

# THE SUMMIT

---

## AT DOUGLAS RIDGE

3721 & 3741 DOUGLAS BLVD  
ROSEVILLE | CA



**Newmark  
Knight Frank**



VECTRA MANAGEMENT GROUP

**CHRIS LEMMON**

916.367.6349

[clemmon@ngkf.com](mailto:clemmon@ngkf.com)

CA RE License # 01506816

**ZAC COLLIE**

916.367.6347

[zcollie@ngkf.com](mailto:zcollie@ngkf.com)

CA RE License # 01841055

# THE SUMMIT

---

## HIGHLIGHTS

- One of The Premier Office Buildings in the Roseville Submarket
- Newly Remodeled Lobbies
- High-End Finishes & Amenities
- Walking Distance to Retail, Restaurants and Services
- Covered Parking
- On-Site Café
- On-Site Fitness Facility
- Shared Conference Center
- Building Signage Available

---

UNDER NEW OWNERSHIP  
AND MANAGEMENT

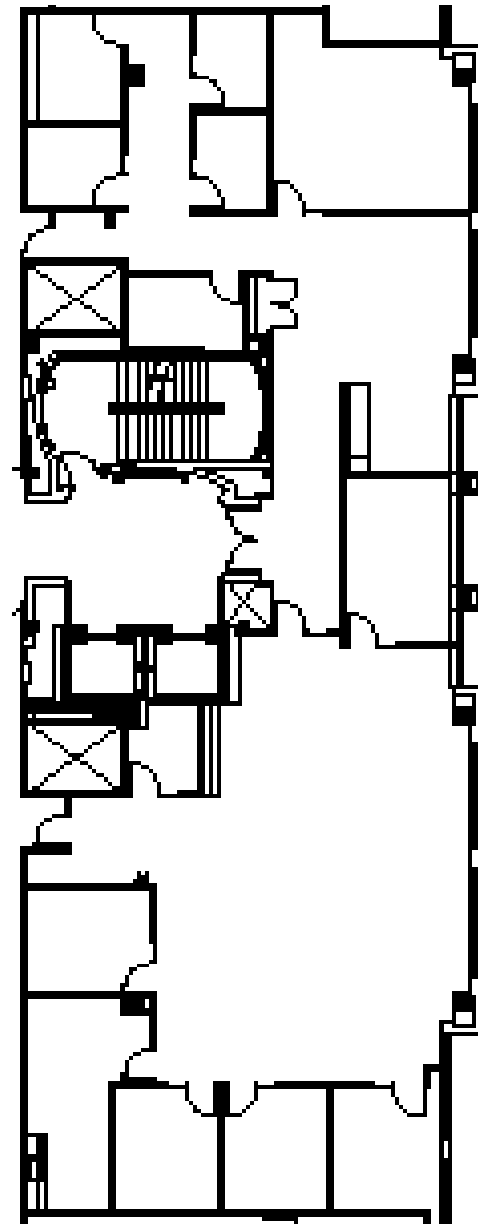
THE  
SUMMIT  
AT DOUGLAS RIDGE

# FLOOR PLANS



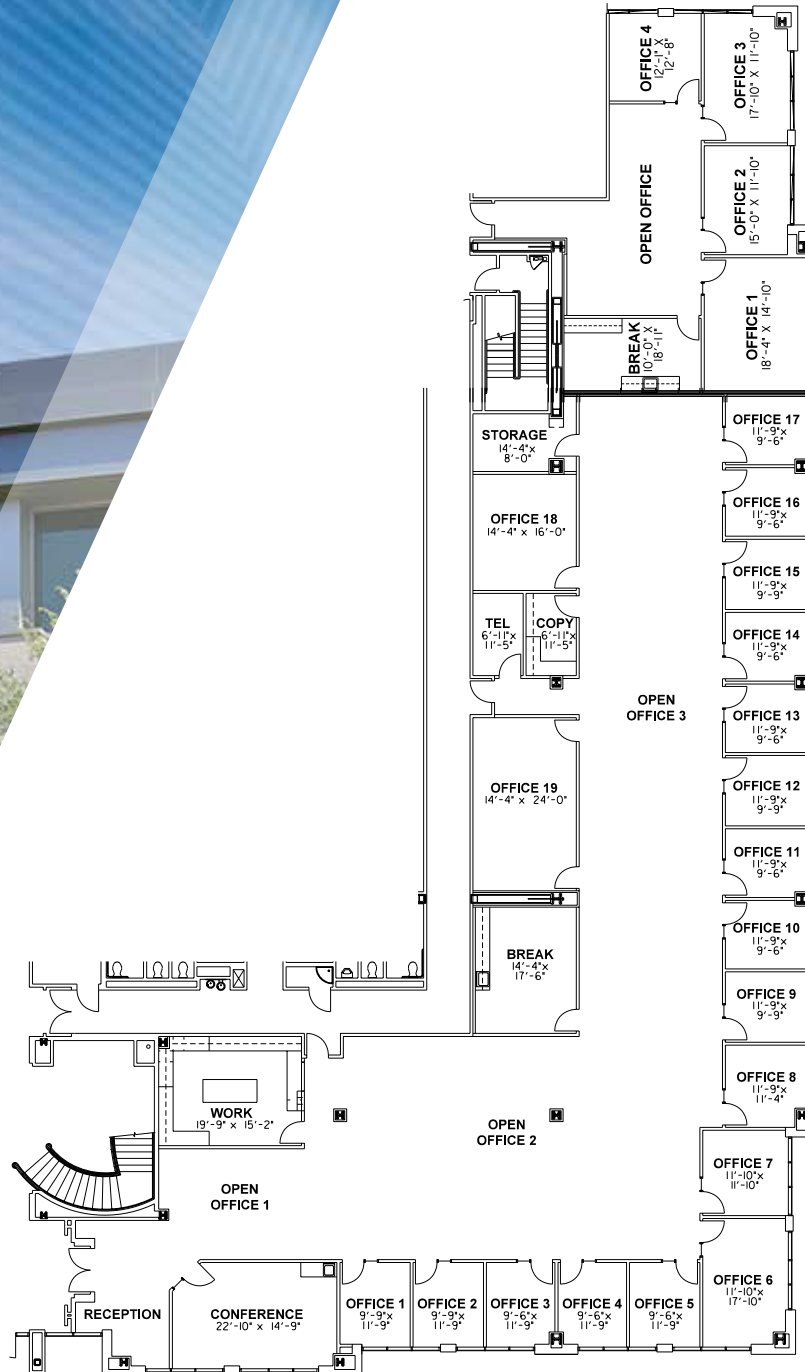
**3721** DOUGLAS BLVD

Suite 200 | ±5,220 RSF



THE  
SUMMIT  
AT DOUGLAS RIDGE

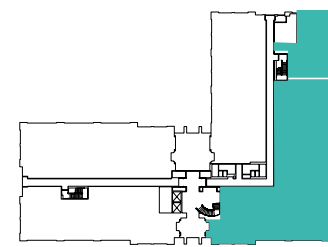
# FLOOR PLANS



3741 DOUGLAS BLVD  
Suites 150/170 | ±11,526 RSF

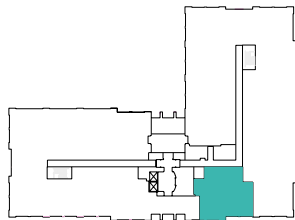
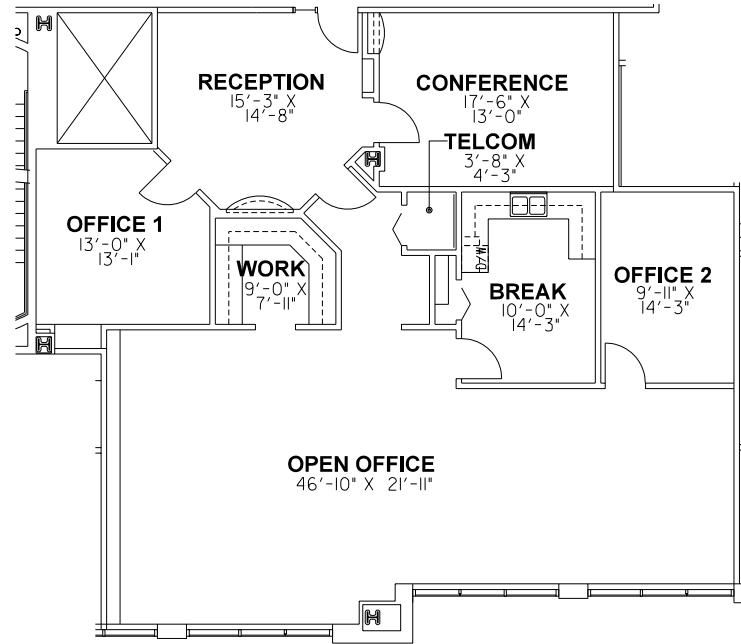
Suite 170 | ±1,937 RSF

Suite 150 | ±9,589 RSF



THE  
**SUMMIT**  
AT DOUGLAS RIDGE

# FLOOR PLANS

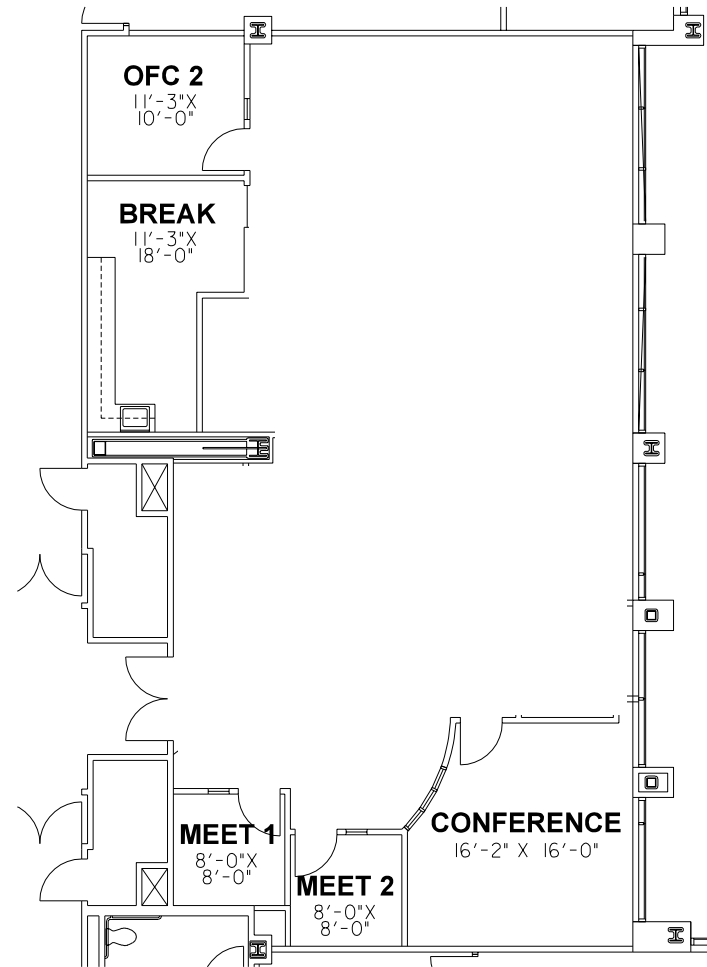
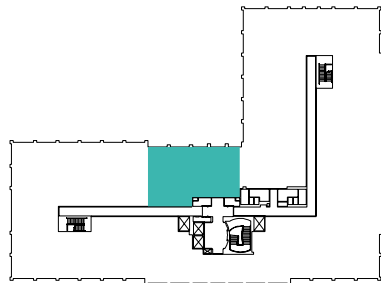


**3741** DOUGLAS BLVD

Suite 250 | ±2,356 RSF

THE  
**SUMMIT**  
AT DOUGLAS RIDGE

# FLOOR PLANS

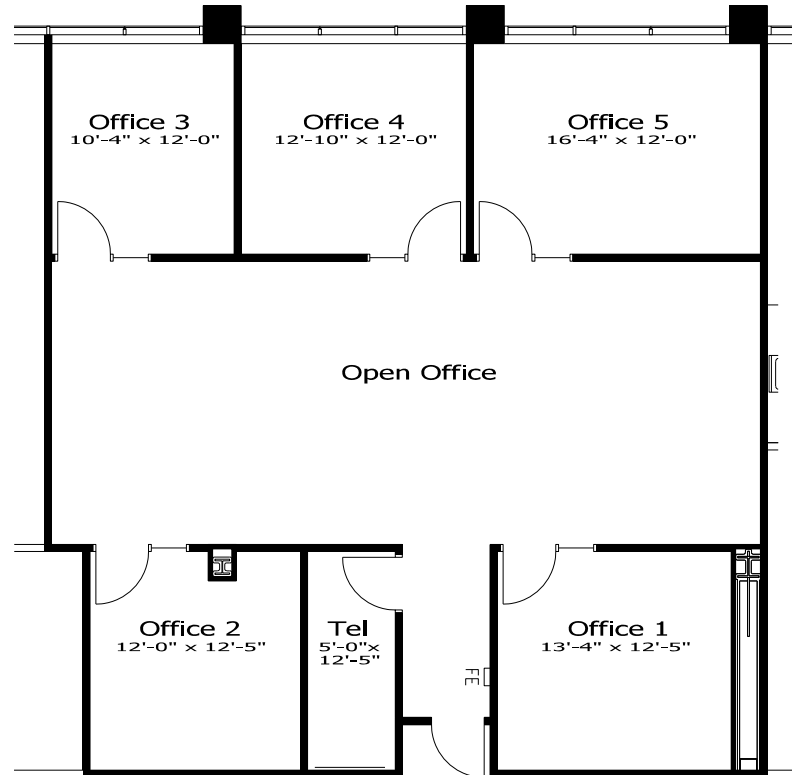
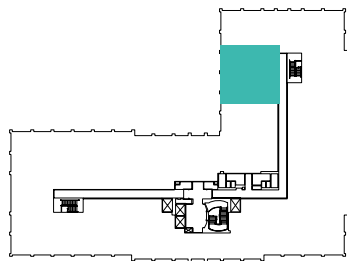


**3741** DOUGLAS BLVD

Suite 300 | ±2,766 RSF

THE  
**SUMMIT**  
AT DOUGLAS RIDGE

# FLOOR PLANS



**3741** DOUGLAS BLVD

Suite 385 | ±1,965 RSF

THE  
SUMMIT  
GALLERY





WAL-MART



LOWE'S

WinCo FOODS

65



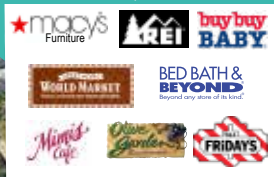
STANFORD RANCH CROSSING  
±368,493 SF



CREEKSIDE CENTER  
±360,000 SF



THE RIDGE AT CREEKSIDE  
±250,000 SF



Summit Roseville Medical Center  
A Summit Health Affiliate

THE FOUNTAINS  
±330,000SF



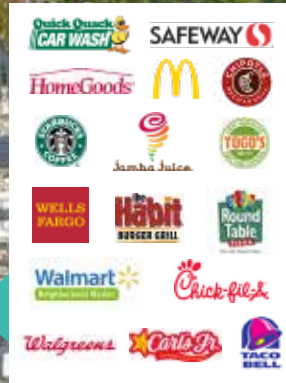
LIFETIME FITNESS



ROSEVILLE Auto Mall



THE SUMMIT AT DOUGLAS RIDGE



TRADER JOE'S

TJ Maxx Plaza



Rocky Ridge Town Center



3721 & 3741 DOUGLAS BLVD. ROSEVILLE | CA

# THE SUMMIT AMENITIES AERIAL

Roseville Pkwy

80

Galleria Blvd

Roseville Pkwy

Eureka Rd

Rocky Ridge Dr

Douglas Blvd

# THE SUMMIT

---

## AT DOUGLAS RIDGE

3721 & 3741 DOUGLAS BLVD  
ROSEVILLE | CA

**CHRIS LEMMON**

916.367.6349

clemmon@ngkf.com  
CA RE License # 01506816

**ZAC COLLIE**

916.367.6347

zcollie@ngkf.com  
CA RE License # 01841055

**3005 DOUGLAS BLVD, SUITE 130  
ROSEVILLE, CA 95661**

The distributor of this communication is performing acts for which a real estate license is required. The information contained herein has been obtained from sources deemed reliable but has not been verified and no guarantee, warranty or representation, either express or implied, is made with respect to such information. Terms of sale or lease and availability are subject to change or withdrawal without notice.  
13-2011.07/18



VECTRA MANAGEMENT GROUP



**Newmark  
Knight Frank**