

# Project 2

**SUBMITTED BY**

MB  
michaelbrandt25@gmail.com

---

**CREATED ON**

2023-03-03

---

**LOCATION**

3444 Marintown Ln

<b>Total area</b> 10077.87 sq ft	<b>Floors</b> 2	<b>Rooms</b> 39	<b>Bathrooms</b> 4
-------------------------------------	--------------------	--------------------	-----------------------

---

## Project 2

3444 Marintown Ln

TOTAL AREA: 10077.87 sq ft • LIVING AREA: 9364.83 sq ft • FLOORS: 2 • ROOMS: 39



### ▼ Ground Floor

TOTAL AREA: 5258.56 sq ft • LIVING AREA: 4545.53 sq ft • ROOMS: 19



THIS FLOORPLAN IS PROVIDED WITHOUT WARRANTY OF ANY KIND. SENSOPIA DISCLAIMS ANY WARRANTY INCLUDING, WITHOUT LIMITATION, SATISFACTORY QUALITY OR ACCURACY OF DIMENSIONS.

0' 4' 8' 12' 16' 20' 1:144

## Project 2

3444 Marintown Ln

TOTAL AREA: 10077.87 sq ft • LIVING AREA: 9364.83 sq ft • FLOORS: 2 • ROOMS: 39

---



### ▼ Ground Floor

Exterior Wall Thickness

6 3/4"

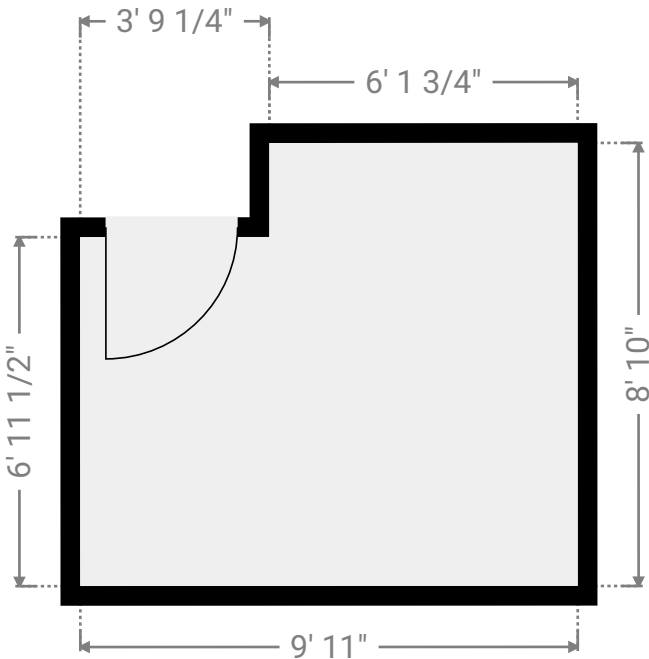
Project 2

3444 Marinetown Ln  
TOTAL AREA: 10077.87 sq ft • LIVING AREA: 9364.83 sq ft • FLOORS: 2 • ROOMS: 39



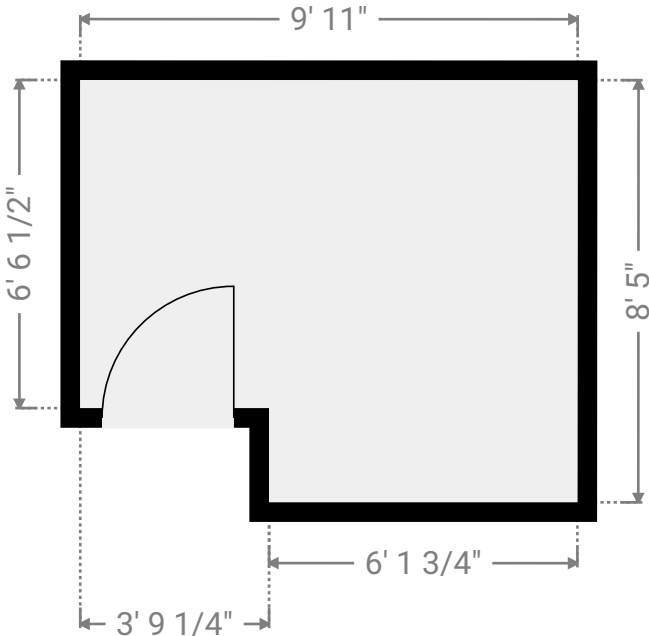
▼ Bathroom  
Ground Floor

WIDTH: 9' 11" • LENGTH: 8' 10"  
AREA: 80.53 sq ft • PERIMETER: 37' 6"



▼ Bathroom  
Ground Floor

WIDTH: 9' 11" • LENGTH: 8' 5"  
AREA: 76.38 sq ft • PERIMETER: 36' 8"



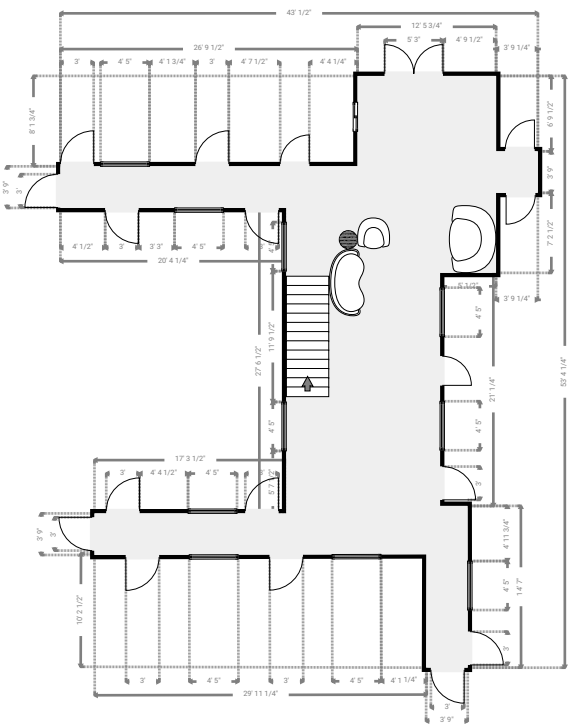
Project 2

3444 Marinatown Ln  
TOTAL AREA: 10077.87 sq ft • LIVING AREA: 9364.83 sq ft • FLOORS: 2 • ROOMS: 39



▼ Lobby  
Ground Floor

WIDTH: 43' 1/2" • LENGTH: 53' 4 1/4"  
AREA: 839.42 sq ft • PERIMETER: 232' 5"



▼ Lobby/Ground Floor

Photos  
2 Photos (see photos page)

Project 2

3444 Marintown Ln  
TOTAL AREA: 10077.87 sq ft • LIVING AREA: 9364.83 sq ft • FLOORS: 2 • ROOMS: 39



▼ Photos/Lobby

Lobby Photo 1

Boaters Mail Boxes

Lobby Photo 2

Boaters Mail Boxes

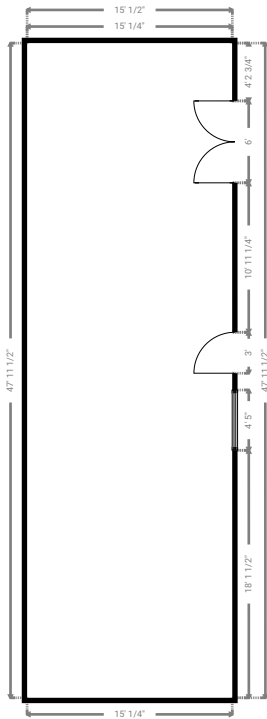
Project 2

3444 Marintown Ln  
TOTAL AREA: 10077.87 sq ft • LIVING AREA: 9364.83 sq ft • FLOORS: 2 • ROOMS: 39



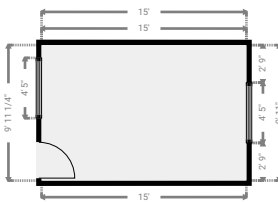
▼ **Patio**  
Ground Floor

WIDTH: 15' 1/2" • LENGTH: 47' 11 1/2"  
AREA: 720.32 sq ft • PERIMETER: 125' 11 1/2"



▼ **Suite 1**  
Ground Floor

WIDTH: 15' • LENGTH: 9' 11 1/4"  
AREA: 148.83 sq ft • PERIMETER: 49' 10 1/4"



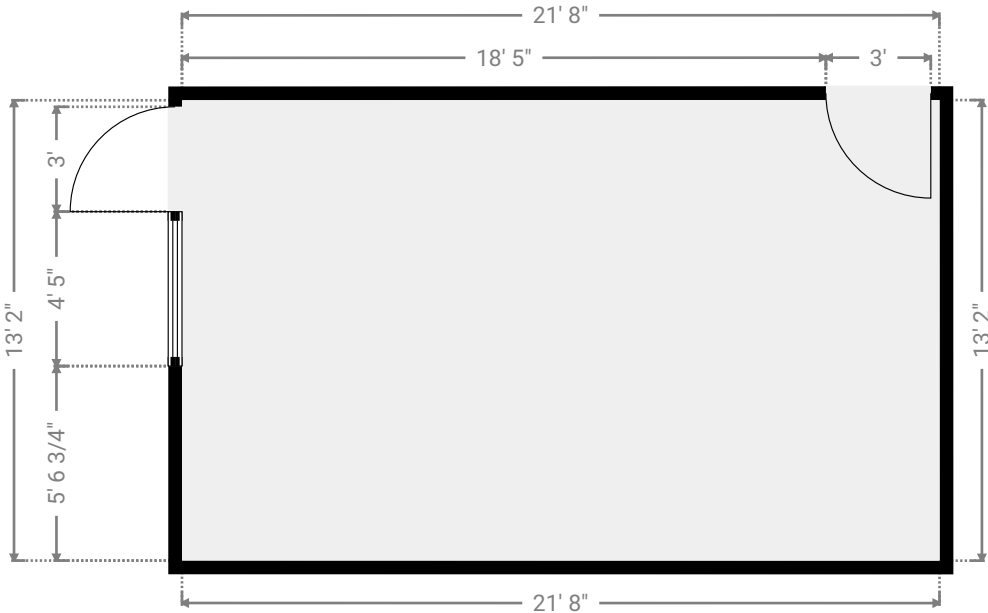
Project 2

3444 Marintown Ln  
TOTAL AREA: 10077.87 sq ft • LIVING AREA: 9364.83 sq ft • FLOORS: 2 • ROOMS: 39



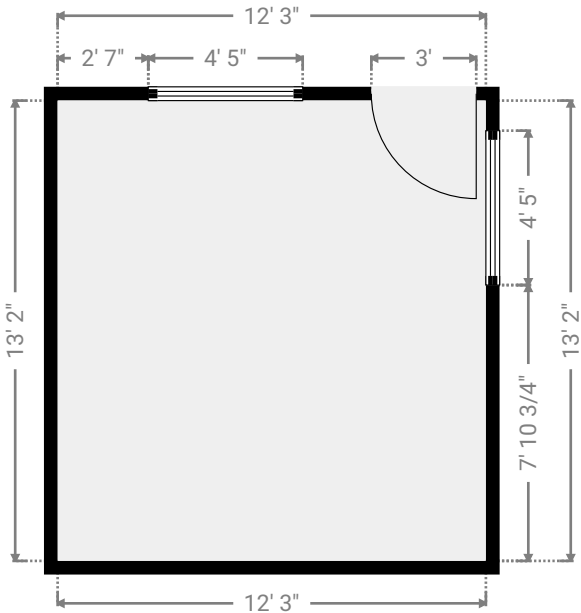
▼ Suite 10 A  
Ground Floor

WIDTH: 21' 8" • LENGTH: 13' 2"  
AREA: 285.39 sq ft • PERIMETER: 69' 8 1/4"



▼ Suite 10B  
Ground Floor

WIDTH: 12' 3" • LENGTH: 13' 2"  
AREA: 161.29 sq ft • PERIMETER: 50' 10"





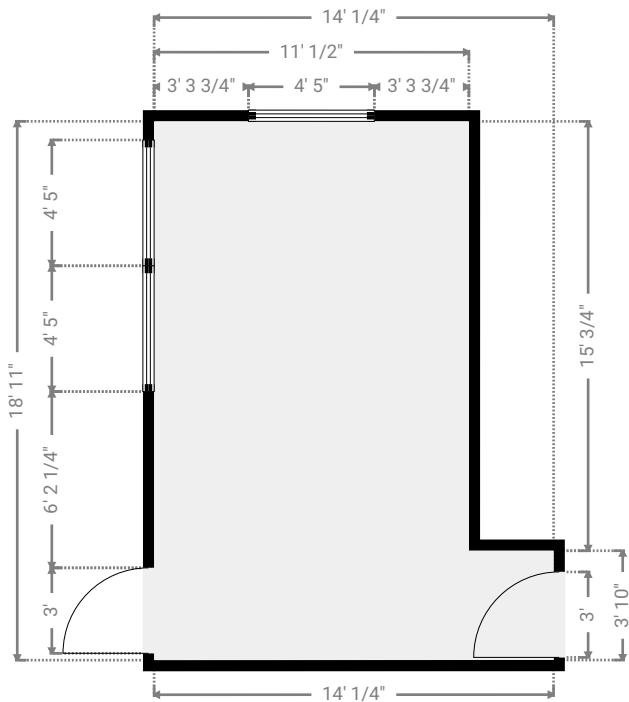
Project 2

3444 Marinatown Ln  
TOTAL AREA: 10077.87 sq ft • LIVING AREA: 9364.83 sq ft • FLOORS: 2 • ROOMS: 39



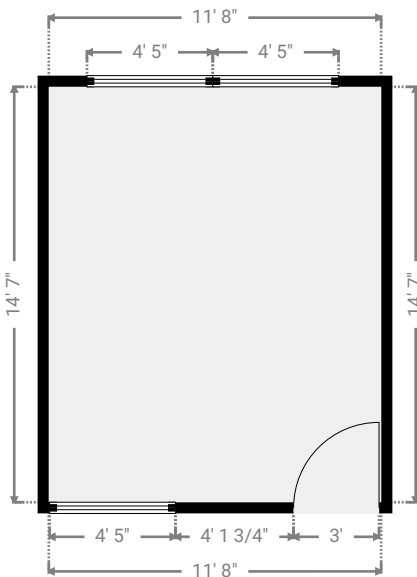
▼ Suite 11  
Ground Floor

WIDTH: 14' 1/4" • LENGTH: 18' 11"  
AREA: 220.40 sq ft • PERIMETER: 65' 10 1/2"



▼ Suite 12  
Ground Floor

WIDTH: 11' 8" • LENGTH: 14' 7"  
AREA: 170.14 sq ft • PERIMETER: 52' 6"



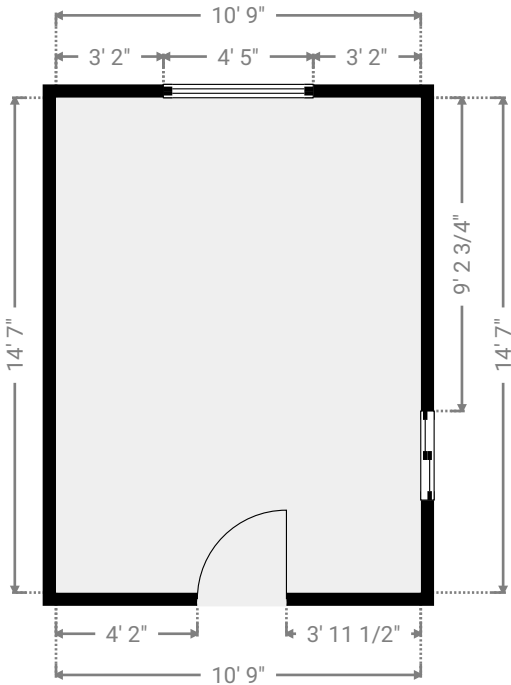
Project 2

3444 Marintown Ln  
TOTAL AREA: 10077.87 sq ft • LIVING AREA: 9364.83 sq ft • FLOORS: 2 • ROOMS: 39



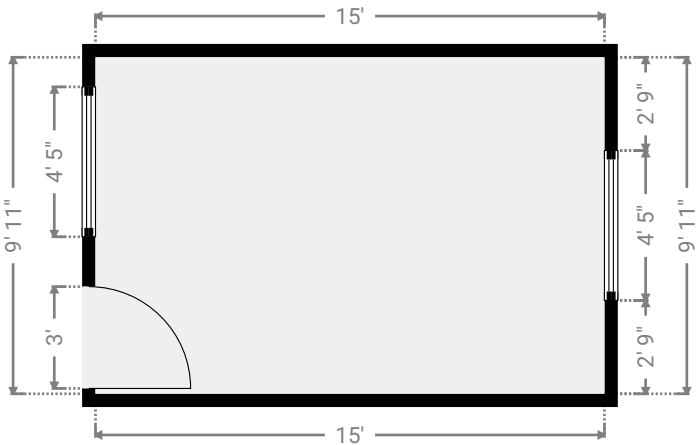
▼ Suite 13  
Ground Floor

WIDTH: 10' 9" • LENGTH: 14' 7"  
AREA: 156.77 sq ft • PERIMETER: 50' 8"



▼ Suite 2  
Ground Floor

WIDTH: 15' • LENGTH: 9' 11"  
AREA: 148.75 sq ft • PERIMETER: 49' 10"



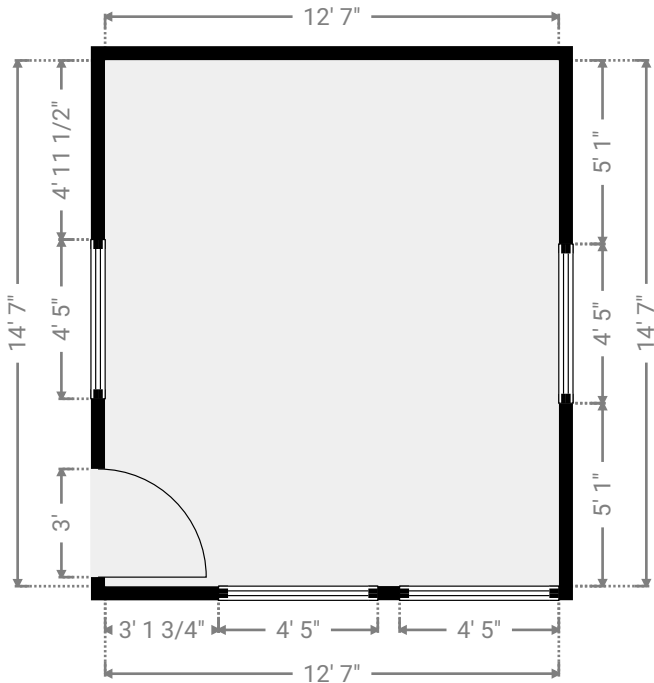
Project 2

3444 Marintown Ln  
TOTAL AREA: 10077.87 sq ft • LIVING AREA: 9364.83 sq ft • FLOORS: 2 • ROOMS: 39



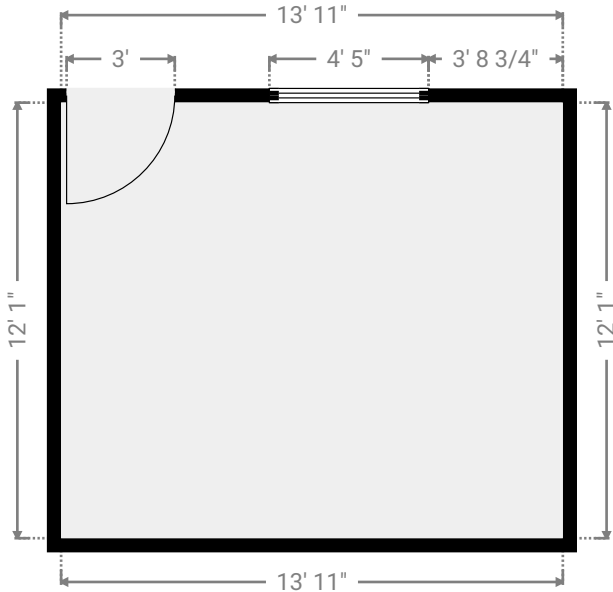
Suite 3  
Ground Floor

WIDTH: 12' 7" • LENGTH: 14' 7"  
AREA: 183.51 sq ft • PERIMETER: 54' 4"



Suite 4  
Ground Floor

WIDTH: 13' 11" • LENGTH: 12' 1"  
AREA: 168.14 sq ft • PERIMETER: 52'



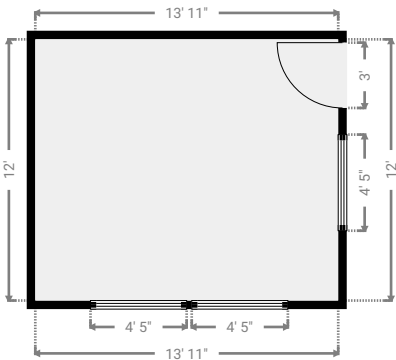
Project 2

3444 Marintown Ln  
TOTAL AREA: 10077.87 sq ft • LIVING AREA: 9364.83 sq ft • FLOORS: 2 • ROOMS: 39



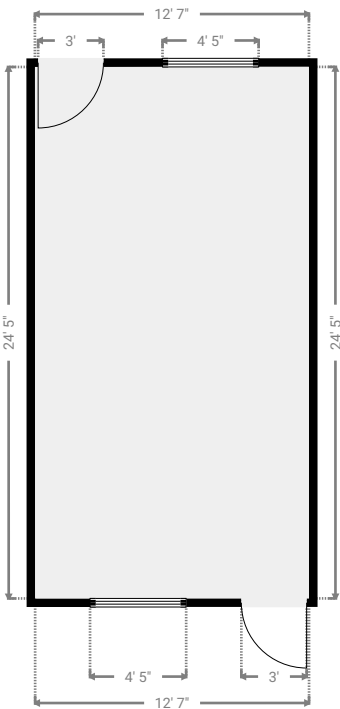
▼ Suite 5  
Ground Floor

WIDTH: 13' 11" • LENGTH: 12'  
AREA: 167.00 sq ft • PERIMETER: 51' 10"



▼ Suite 6  
Ground Floor

WIDTH: 12' 7" • LENGTH: 24' 5"  
AREA: 307.34 sq ft • PERIMETER: 74'



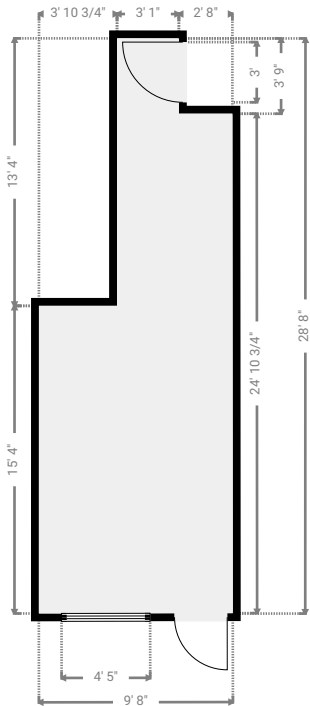
Project 2

3444 Marintown Ln  
TOTAL AREA: 10077.87 sq ft • LIVING AREA: 9364.83 sq ft • FLOORS: 2 • ROOMS: 39



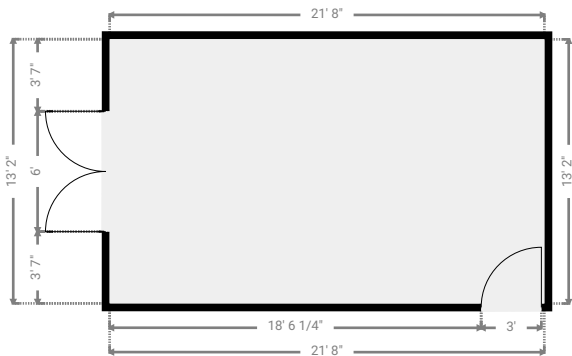
▼ Suite 6 - Harbor Master / Leasing Office  
Ground Floor

WIDTH: 9' 8" • LENGTH: 28' 8"  
AREA: 214.71 sq ft • PERIMETER: 76' 7 1/2"



▼ Suite 8  
Ground Floor

WIDTH: 21' 8" • LENGTH: 13' 2"  
AREA: 285.27 sq ft • PERIMETER: 69' 8"



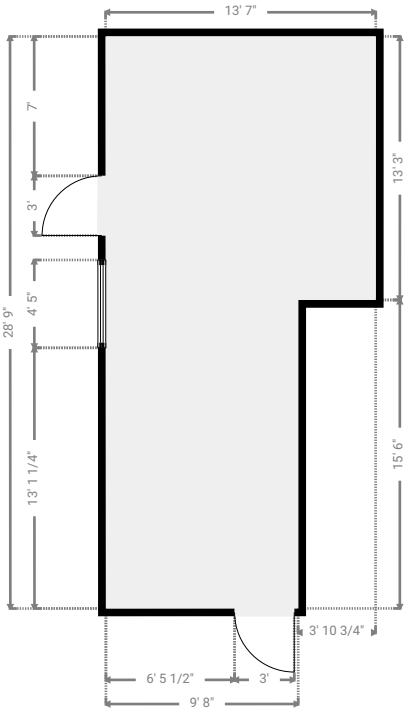
Project 2

3444 Marinatown Ln  
TOTAL AREA: 10077.87 sq ft • LIVING AREA: 9364.83 sq ft • FLOORS: 2 • ROOMS: 39



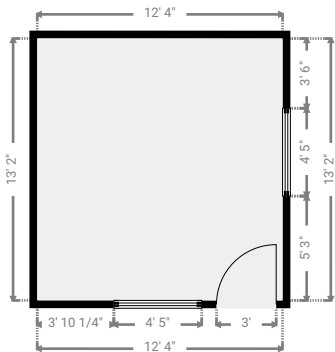
▼ Suite 8A  
Ground Floor

WIDTH: 13' 7" • LENGTH: 28' 9"  
AREA: 329.88 sq ft • PERIMETER: 84' 8"



▼ Suite 9  
Ground Floor

WIDTH: 12' 4" • LENGTH: 13' 2"  
AREA: 162.38 sq ft • PERIMETER: 51'



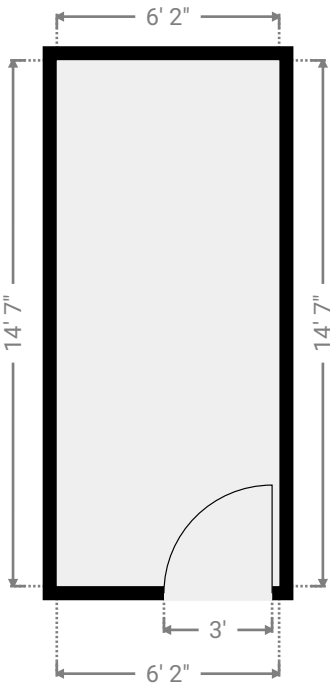
Project 2

3444 Marintown Ln  
TOTAL AREA: 10077.87 sq ft • LIVING AREA: 9364.83 sq ft • FLOORS: 2 • ROOMS: 39



▼ Utility  
Ground Floor

WIDTH: 6' 2" • LENGTH: 14' 7"  
AREA: 89.93 sq ft • PERIMETER: 41' 6"



## Project 2

3444 Marintown Ln

TOTAL AREA: 10077.87 sq ft • LIVING AREA: 9364.83 sq ft • FLOORS: 2 • ROOMS: 39



### ▼ 2nd Floor

TOTAL AREA: 4819.30 sq ft • LIVING AREA: 4819.30 sq ft • ROOMS: 20



THIS FLOORPLAN IS PROVIDED WITHOUT WARRANTY OF ANY KIND. SENSOPIA DISCLAIMS ANY WARRANTY INCLUDING, WITHOUT LIMITATION, SATISFACTORY QUALITY OR ACCURACY OF DIMENSIONS.

0' 4' 8' 12' 16' 20' 1:144



## Project 2

3444 Marintown Ln

**TOTAL AREA:** 10077.87 sq ft • **LIVING AREA:** 9364.83 sq ft • **FLOORS:** 2 • **ROOMS:** 39

---



### ▼ 2nd Floor

**Exterior Wall Thickness**

6 3/4"

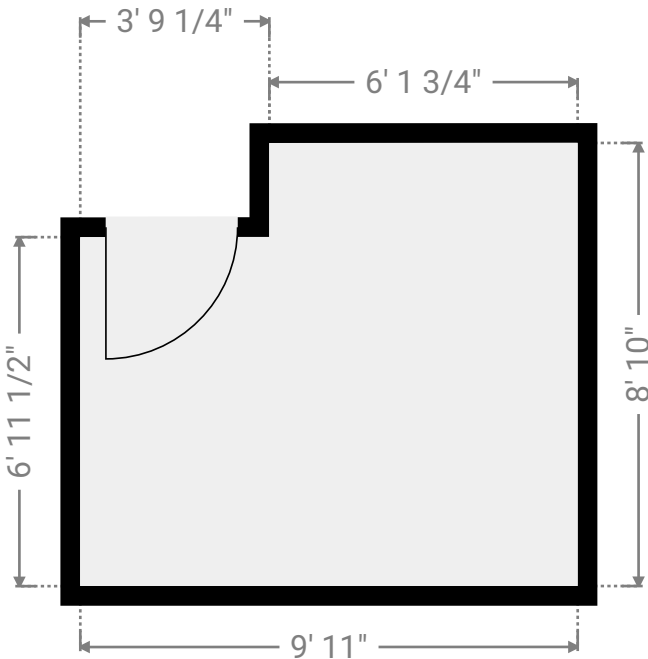
Project 2

3444 Marintown Ln  
TOTAL AREA: 10077.87 sq ft • LIVING AREA: 9364.83 sq ft • FLOORS: 2 • ROOMS: 39



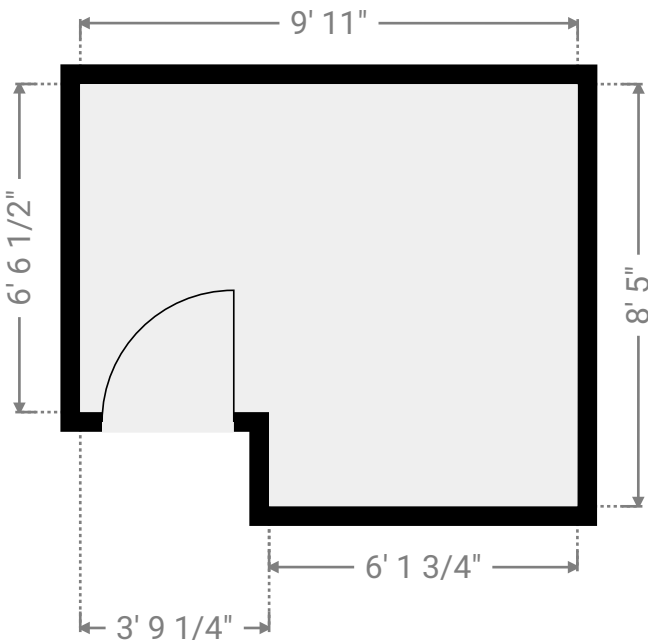
▼ Bathroom  
2nd Floor

WIDTH: 9' 11" • LENGTH: 8' 10"  
AREA: 80.53 sq ft • PERIMETER: 37' 6"



▼ Bathroom  
2nd Floor

WIDTH: 9' 11" • LENGTH: 8' 5"  
AREA: 76.38 sq ft • PERIMETER: 36' 8"





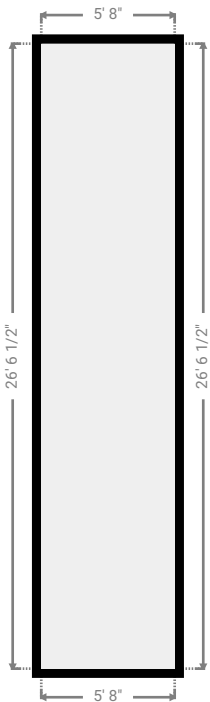
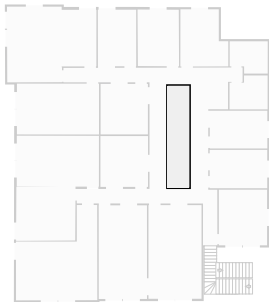
Project 2

3444 Marinatown Ln  
TOTAL AREA: 10077.87 sq ft • LIVING AREA: 9364.83 sq ft • FLOORS: 2 • ROOMS: 39



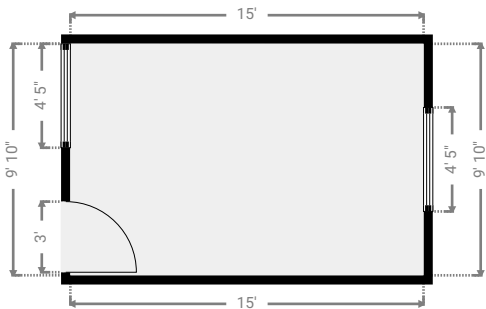
▼ Open Atrium  
2nd Floor

WIDTH: 5' 8" • LENGTH: 26' 6 1/2"  
AREA: 150.43 sq ft • PERIMETER: 64' 5"



▼ Suite 14  
2nd Floor

WIDTH: 15' • LENGTH: 9' 10"  
AREA: 147.51 sq ft • PERIMETER: 49' 8"



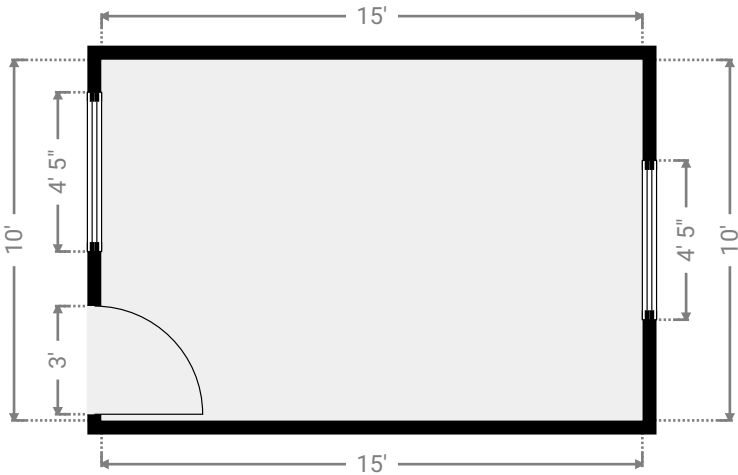
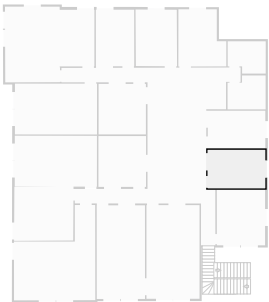
Project 2

3444 Marintown Ln  
TOTAL AREA: 10077.87 sq ft • LIVING AREA: 9364.83 sq ft • FLOORS: 2 • ROOMS: 39



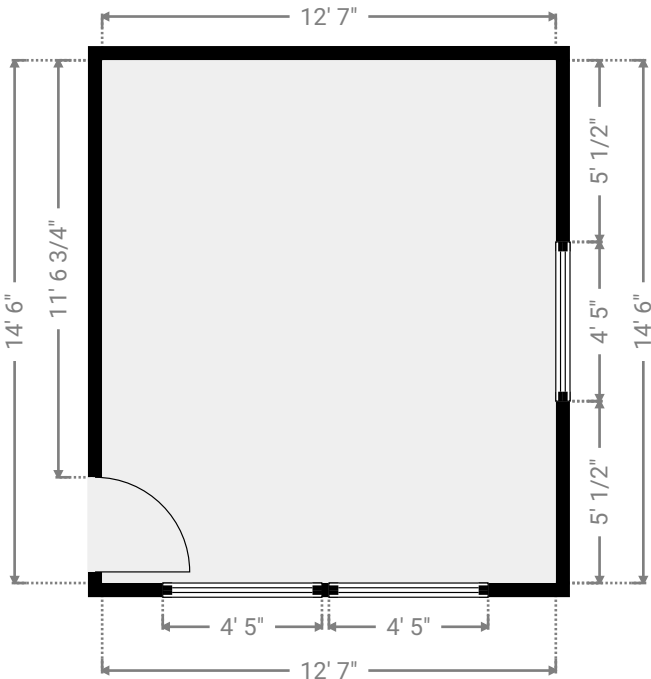
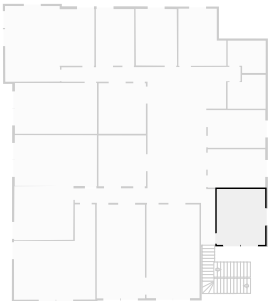
▼ Suite 15  
2nd Floor

WIDTH: 15' • LENGTH: 10'  
AREA: 150.00 sq ft • PERIMETER: 50'



▼ Suite 16  
2nd Floor

WIDTH: 12' 7" • LENGTH: 14' 6"  
AREA: 182.46 sq ft • PERIMETER: 54' 2"



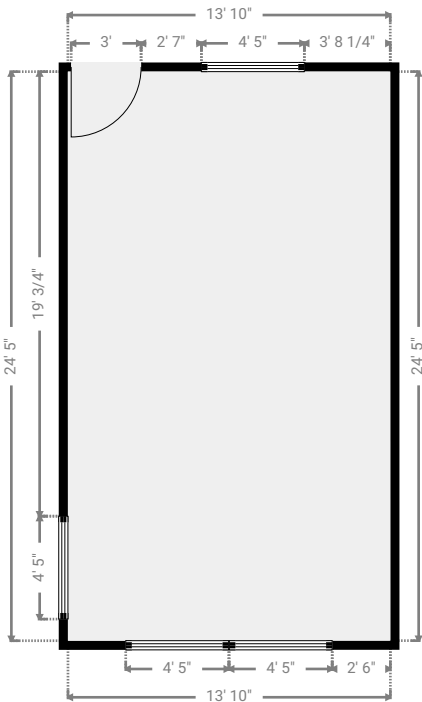
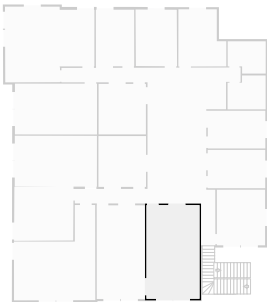
Project 2

3444 Marintown Ln  
TOTAL AREA: 10077.87 sq ft • LIVING AREA: 9364.83 sq ft • FLOORS: 2 • ROOMS: 39



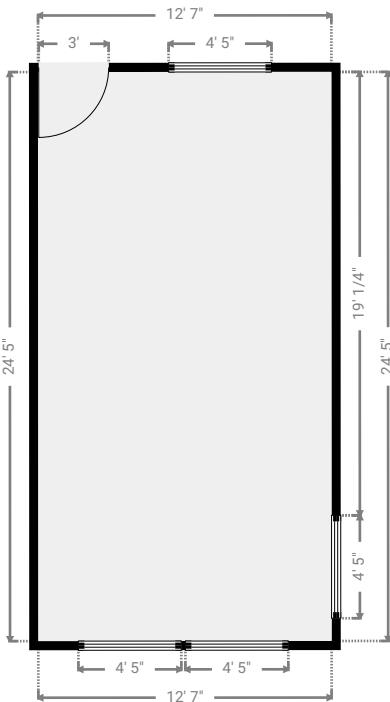
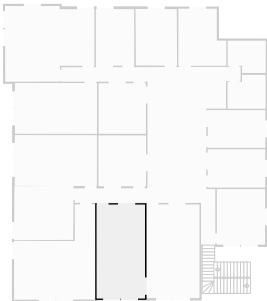
▼ Suite 17  
2nd Floor

WIDTH: 13' 10" • LENGTH: 24' 5"  
AREA: 337.76 sq ft • PERIMETER: 76' 6"



▼ Suite 18A  
2nd Floor

WIDTH: 12' 7" • LENGTH: 24' 5"  
AREA: 307.29 sq ft • PERIMETER: 74'



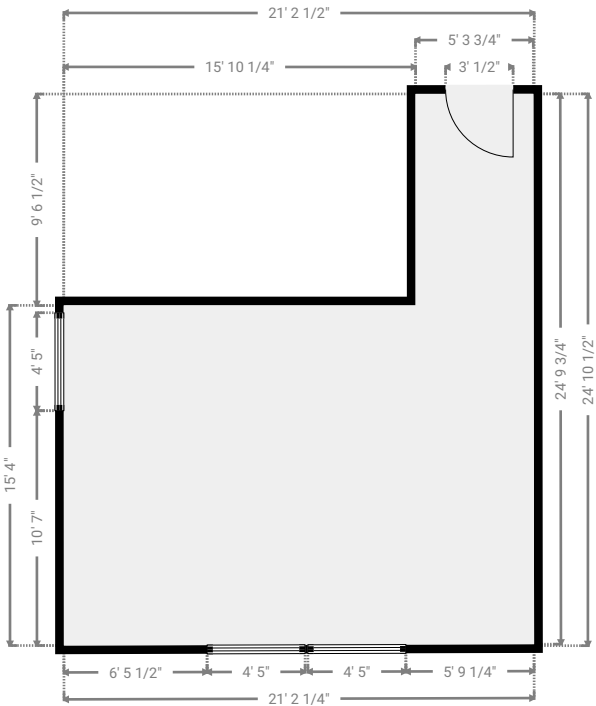
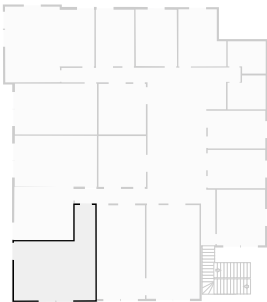
Project 2

3444 Marinatown Ln  
TOTAL AREA: 10077.87 sq ft • LIVING AREA: 9364.83 sq ft • FLOORS: 2 • ROOMS: 39



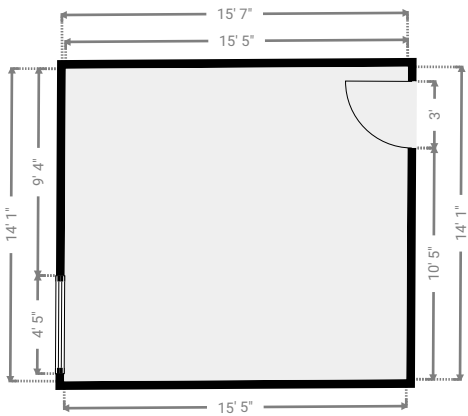
▼ Suite 18B  
2nd Floor

WIDTH: 21' 2 1/2" • LENGTH: 24' 10 1/2"  
AREA: 374.79 sq ft • PERIMETER: 92' 1/2"



▼ Suite 19  
2nd Floor

WIDTH: 15' 7" • LENGTH: 14' 1"  
AREA: 217.10 sq ft • PERIMETER: 59'



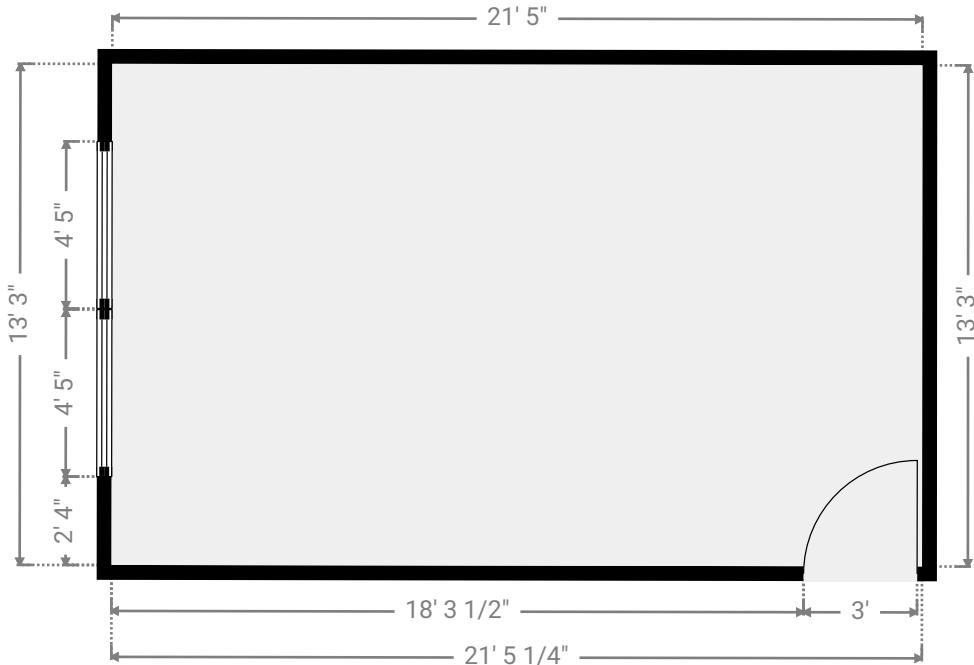
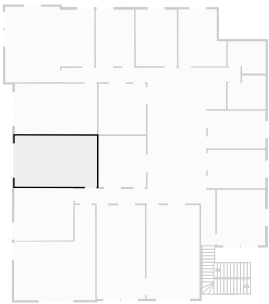
Project 2

3444 Marintown Ln  
TOTAL AREA: 10077.87 sq ft • LIVING AREA: 9364.83 sq ft • FLOORS: 2 • ROOMS: 39



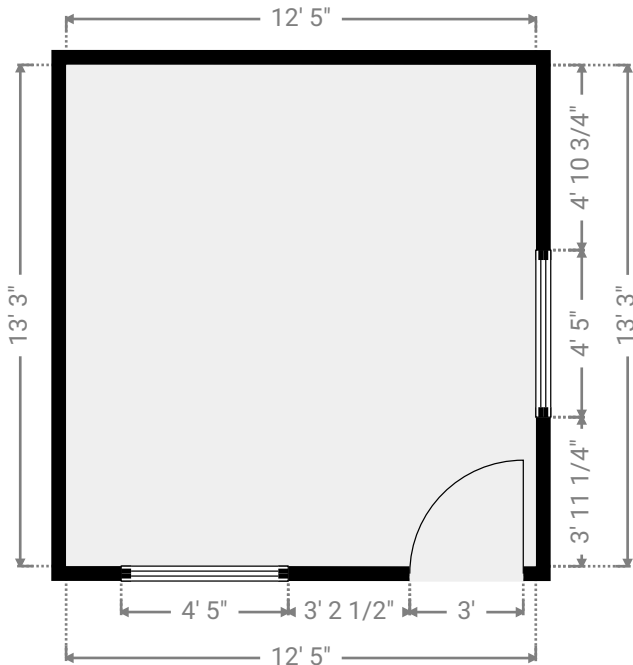
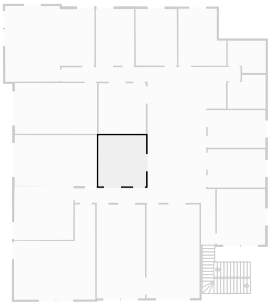
▼ Suite 20  
2nd Floor

WIDTH: 21' 5 1/4" • LENGTH: 13' 3"  
AREA: 283.84 sq ft • PERIMETER: 69' 4 1/4"



▼ Suite 21  
2nd Floor

WIDTH: 12' 5" • LENGTH: 13' 3"  
AREA: 164.52 sq ft • PERIMETER: 51' 4"





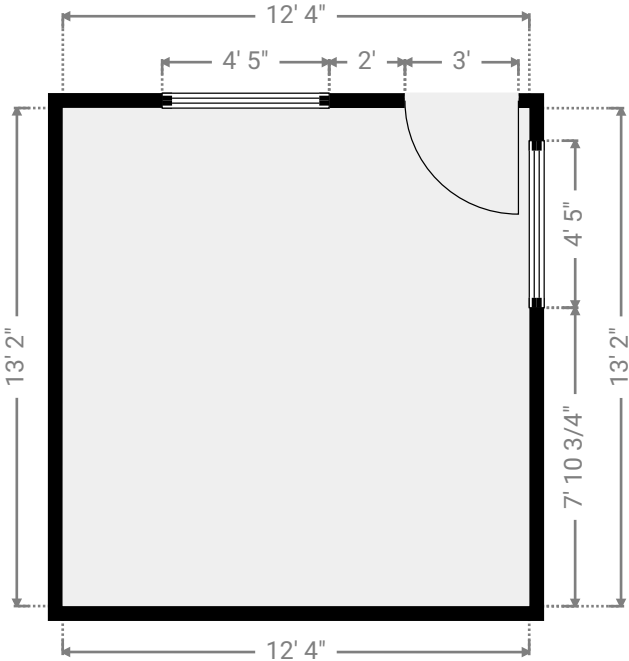
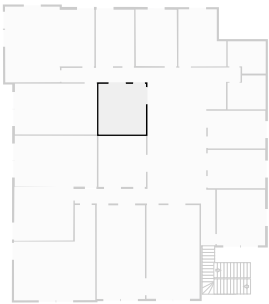
Project 2

3444 Marintown Ln  
TOTAL AREA: 10077.87 sq ft • LIVING AREA: 9364.83 sq ft • FLOORS: 2 • ROOMS: 39



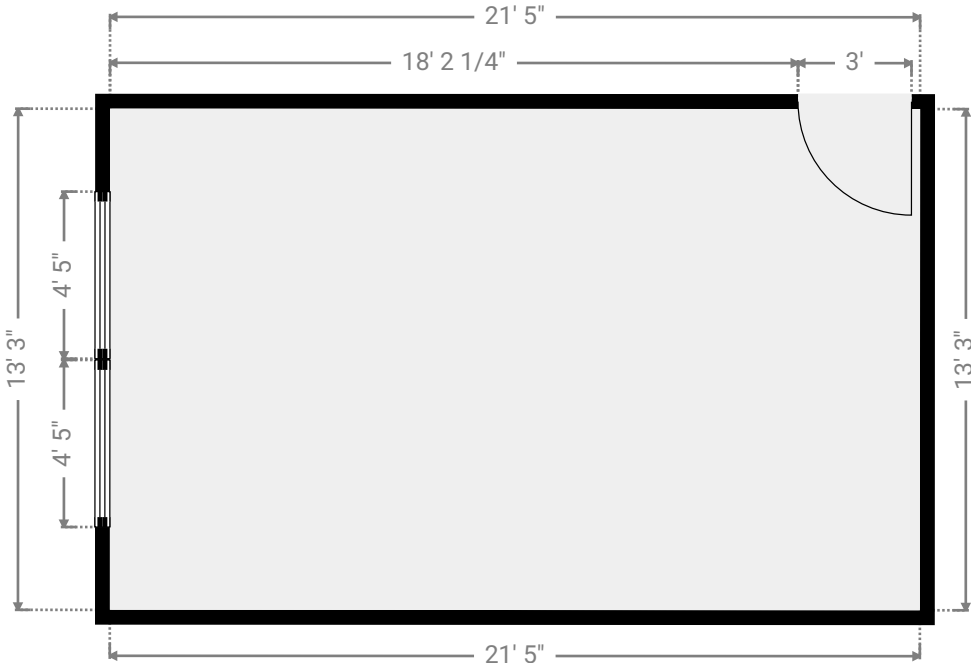
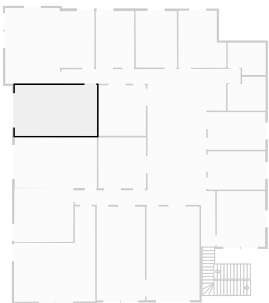
▼ Suite 22  
2nd Floor

WIDTH: 12' 4" • LENGTH: 13' 2"  
AREA: 162.39 sq ft • PERIMETER: 51'



▼ Suite 23  
2nd Floor

WIDTH: 21' 5" • LENGTH: 13' 3"  
AREA: 283.77 sq ft • PERIMETER: 69' 4"



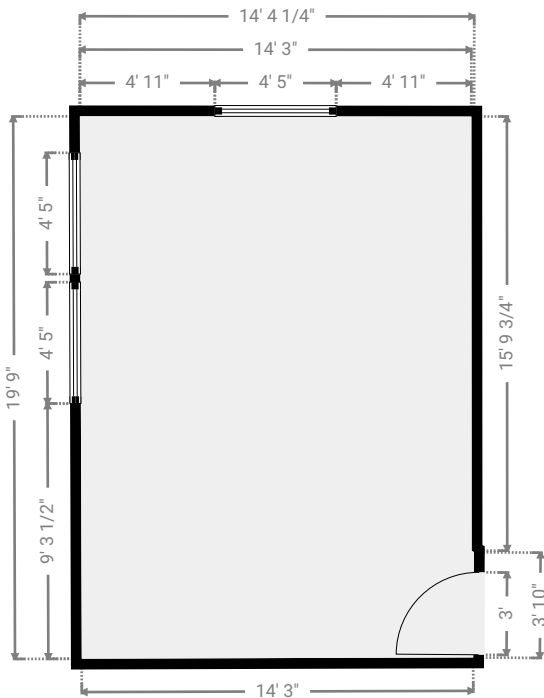
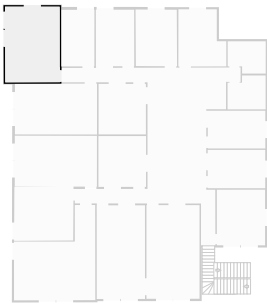
Project 2

3444 Marintown Ln  
TOTAL AREA: 10077.87 sq ft • LIVING AREA: 9364.83 sq ft • FLOORS: 2 • ROOMS: 39



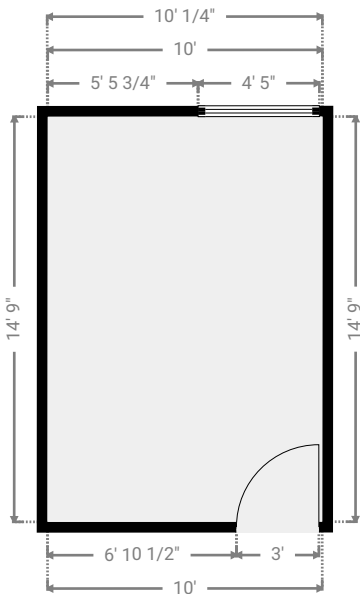
▼ Suite 24  
2nd Floor

WIDTH: 14' 4 1/4" • LENGTH: 19' 9"  
AREA: 280.80 sq ft • PERIMETER: 68'



▼ Suite 25  
2nd Floor

WIDTH: 10' 1/4" • LENGTH: 14' 9"  
AREA: 147.50 sq ft • PERIMETER: 49' 6"



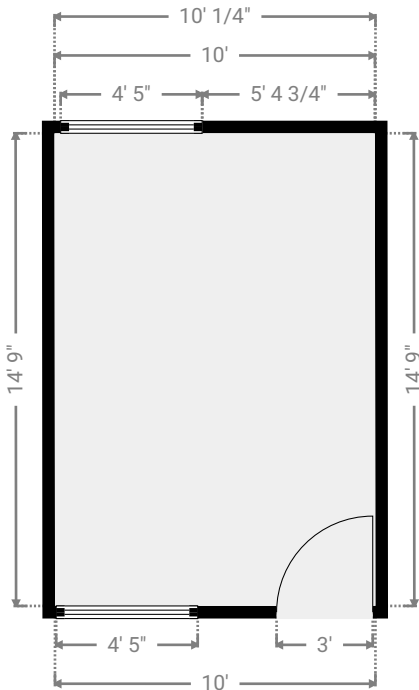
Project 2

3444 Marintown Ln  
TOTAL AREA: 10077.87 sq ft • LIVING AREA: 9364.83 sq ft • FLOORS: 2 • ROOMS: 39



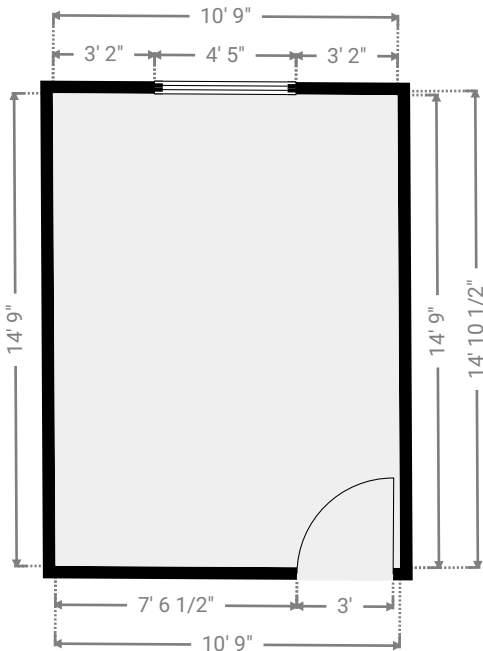
▼ Suite 26  
2nd Floor

WIDTH: 10' 1/4" • LENGTH: 14' 9"  
AREA: 147.50 sq ft • PERIMETER: 49' 6"



▼ Suite 27  
2nd Floor

WIDTH: 10' 9" • LENGTH: 14' 10 1/2"  
AREA: 158.55 sq ft • PERIMETER: 51'



Project 2

3444 Marintown Ln  
TOTAL AREA: 10077.87 sq ft • LIVING AREA: 9364.83 sq ft • FLOORS: 2 • ROOMS: 39



▼ Suite 28  
2nd Floor

WIDTH: 12' 6" • LENGTH: 14' 11"  
AREA: 165.43 sq ft • PERIMETER: 54' 9 1/4"

